



# FEMA



Prepared by  
*Melissa Beat*

# FEMA Region 6 Weather Threat Briefing

Sunday November 12, 2023

**Disclaimer:** The purpose of this briefing is to provide a **Regional** weather threat assessment and is meant as a general overview. County/Parish decision makers should consult their local NWS forecast offices for the latest detailed, local weather information. To find your local NWS forecast office, go to [www.weather.gov/srh](http://www.weather.gov/srh).



NWSSouthern

[www.weather.gov/srh](http://www.weather.gov/srh)



# Summary of the Upcoming Week

- **Slight risk for heavy rainfall/flash flooding in S TX today and then marginal risk in SE TX, S LA on Monday, and SE LA on Tuesday.**
- **Medium chance of tropical development in the southwest Caribbean next week. No impacts to FEMA 6.**



# FEMA Region 6 Threat Matrix

Nov 12, 2023 - Nov 16, 2023

DAY / THREAT	Sun	Mon	Tue	Wed	Thu
Severe Storms					
Heavy Rain / Flash Flooding	STX	SETX, S LA	SE LA		
Fire Weather					
Tropical Winds / Surge					
Winter Weather					
River Flooding					

	No Weather Threats Expected
	Very Common – Happens Often
	Common – Happens Frequently
	Uncommon – A Few Times a Year
	Rare – Once Every 1-5 Years
	Very Rare – Once Every 5-10 Years

*\*Threat levels are based on FEMA Region 6 criteria. State or local threat level criteria may differ.\**  
*For more details on the colors in the threat matrix refer to the last slide in this briefing.*



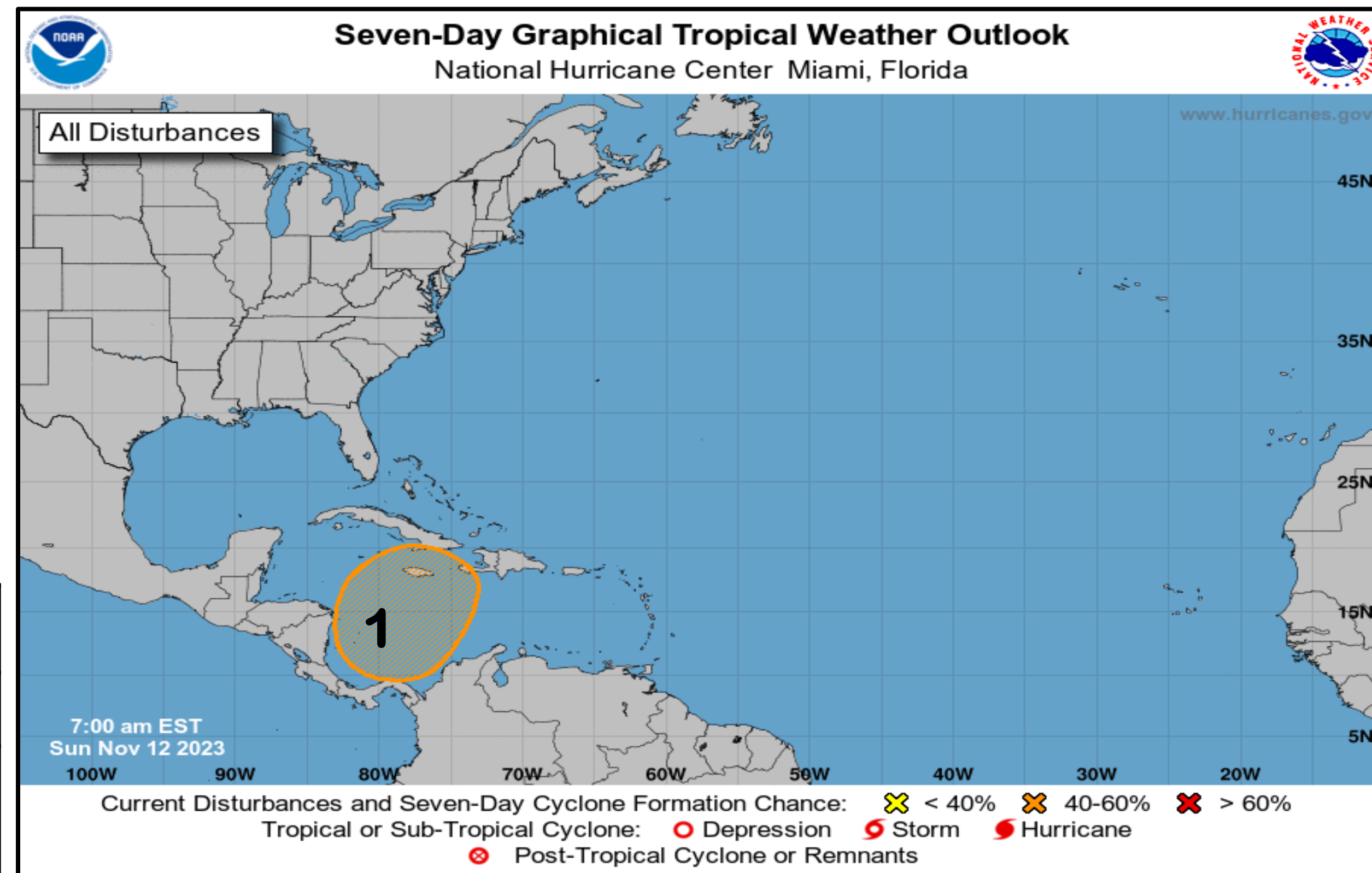
# Tropical Weather Outlook – Atlantic/Gulf

## Areas of Possible Development

Area	Chance of Development	Potential Impacts to FEMA 6
1	Medium	None.

## Active Tropical Cyclones

Storm	Potential Impacts to FEMA 6
-	

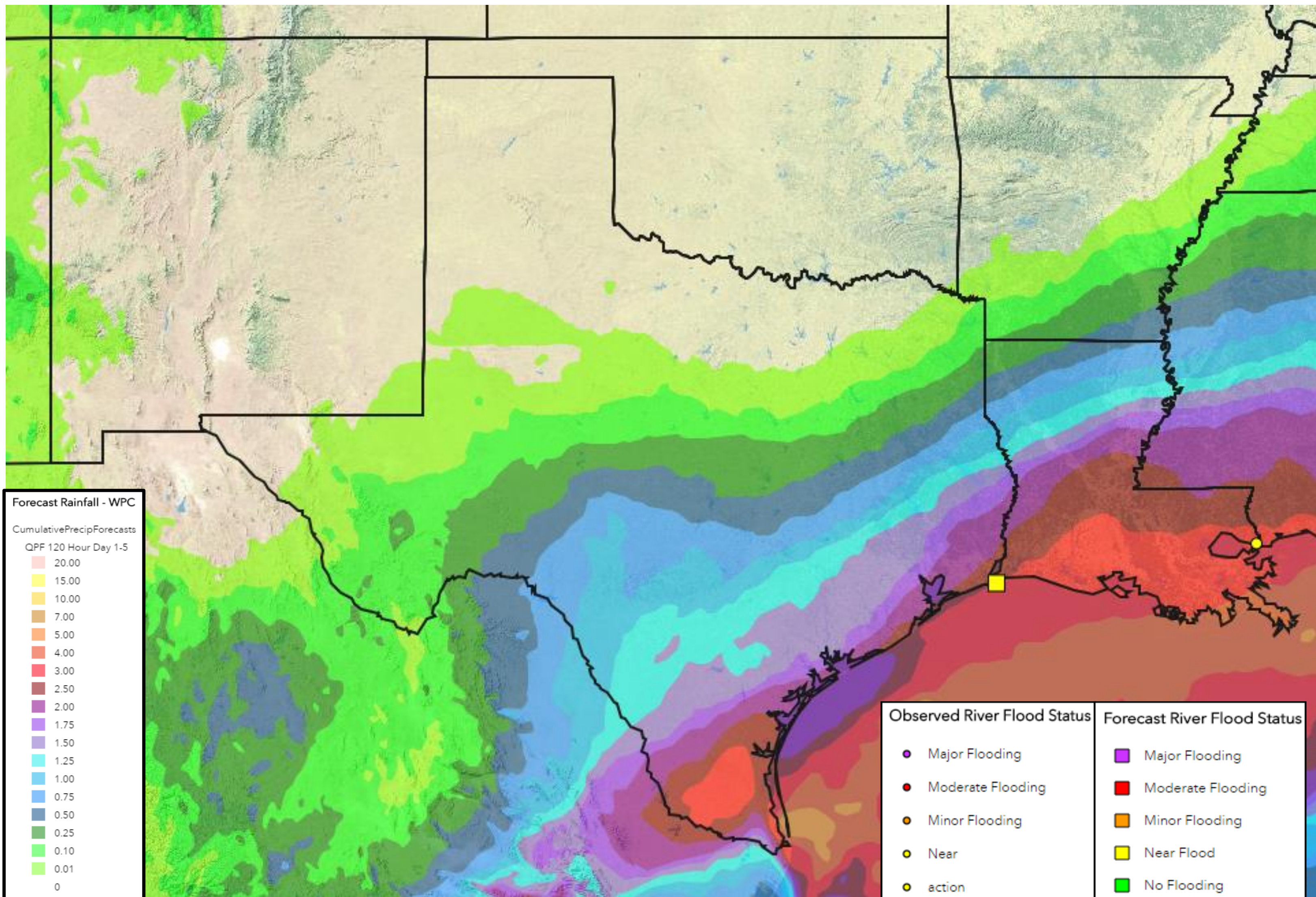


See <http://www.hurricanes.gov> for the latest on the tropics or any active storms



# 5-Day Precipitation Forecast & River Flood Status

Note: Even though the image displays 5 days of forecasted rainfall, river forecasts only include 1-2 days of rainfall



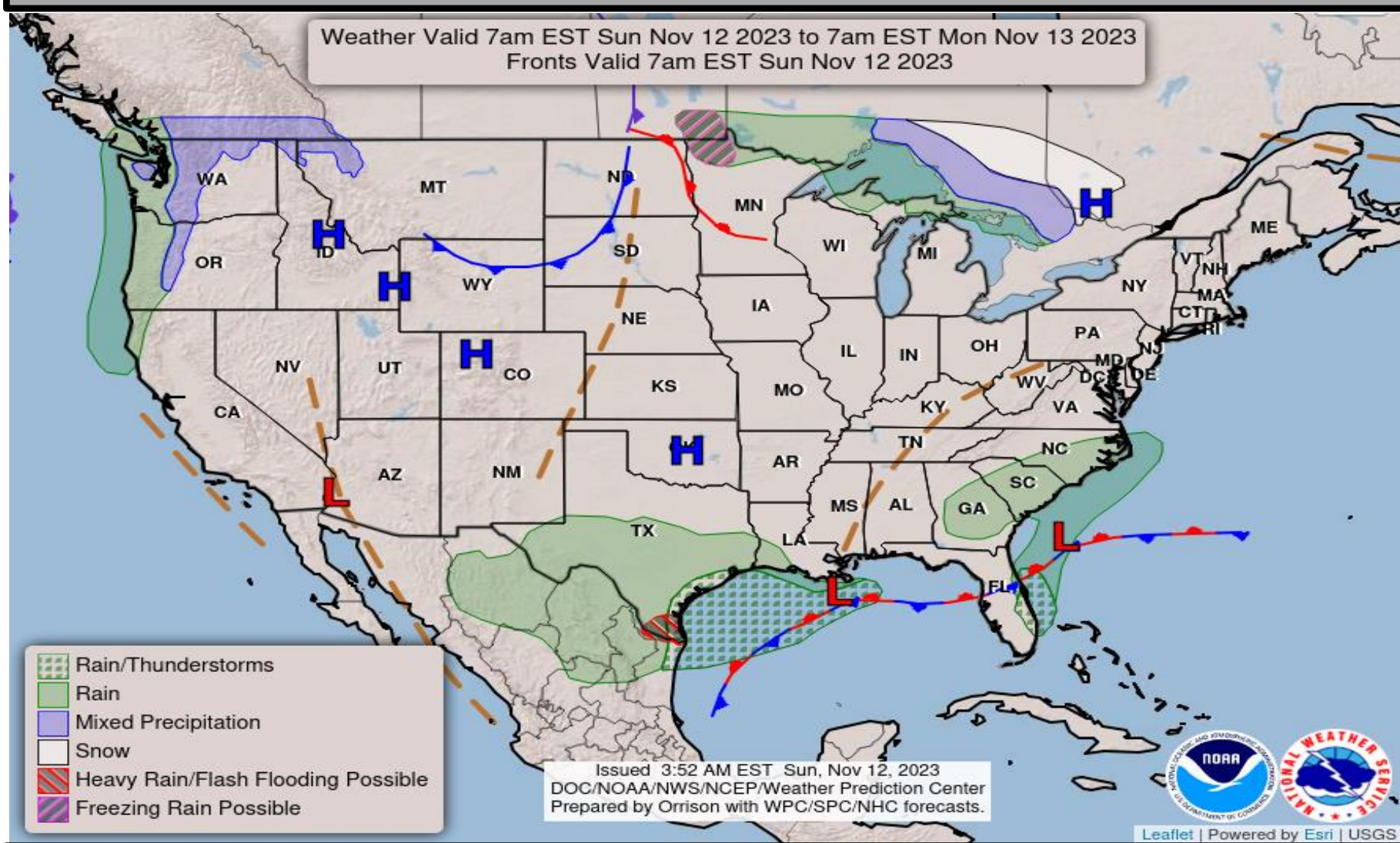
**No river flooding observed. Forecast rainfall is not expected to cause widespread river flooding; many areas are in drought and need the rain.**

<http://water.weather.gov/ahps> for latest river flooding

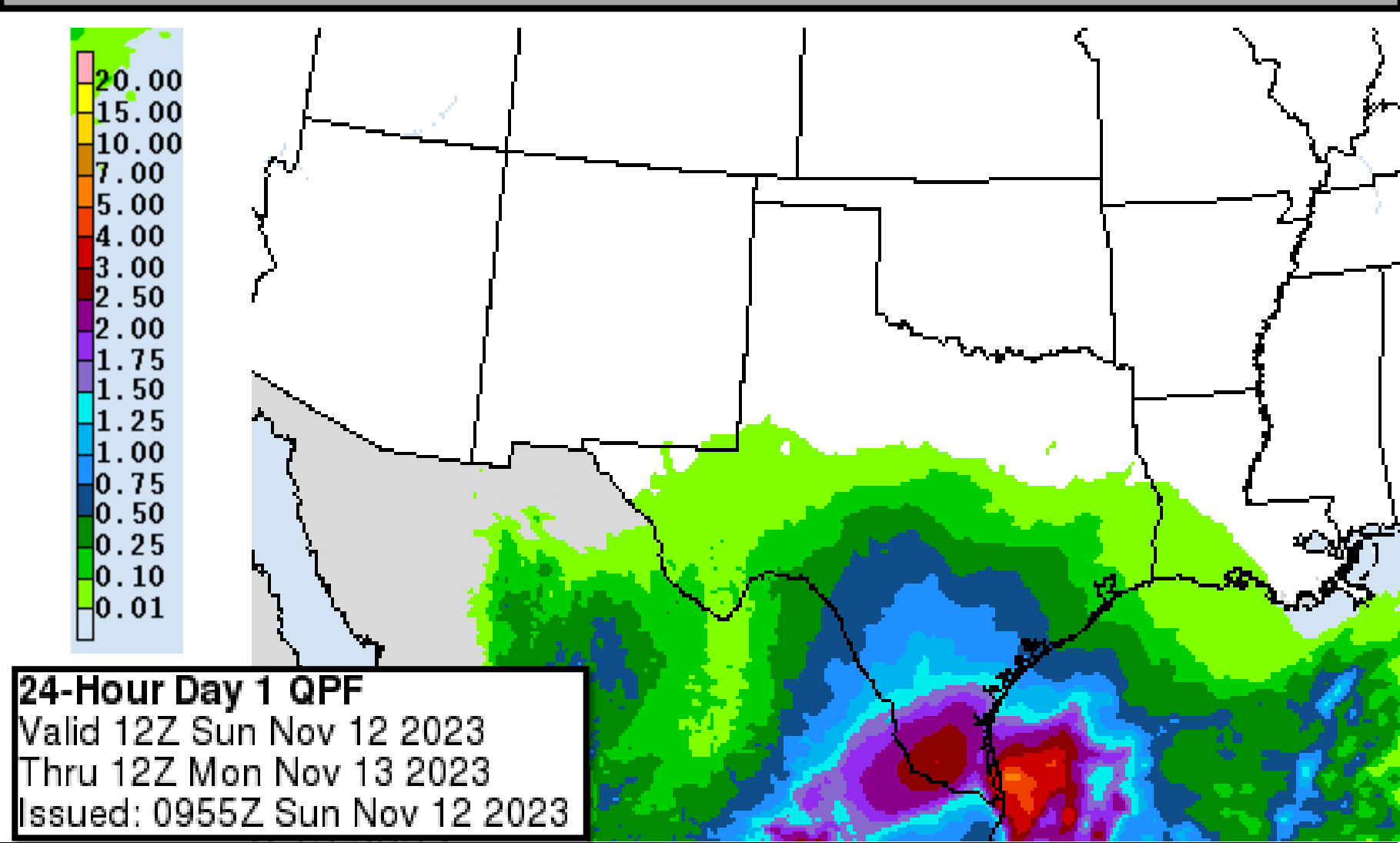


# Today's Weather

## Forecast Chart

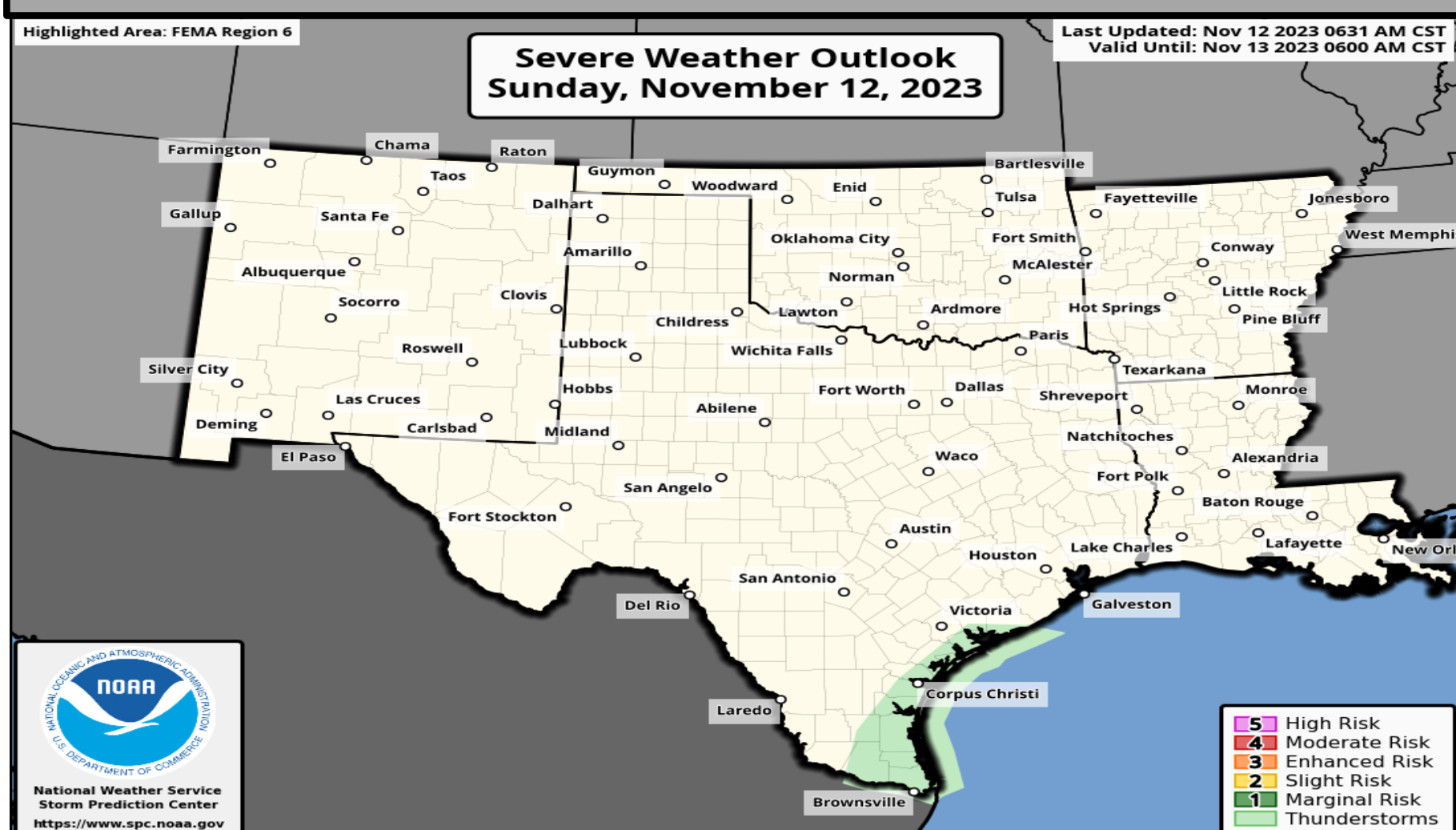


## Forecast Rainfall

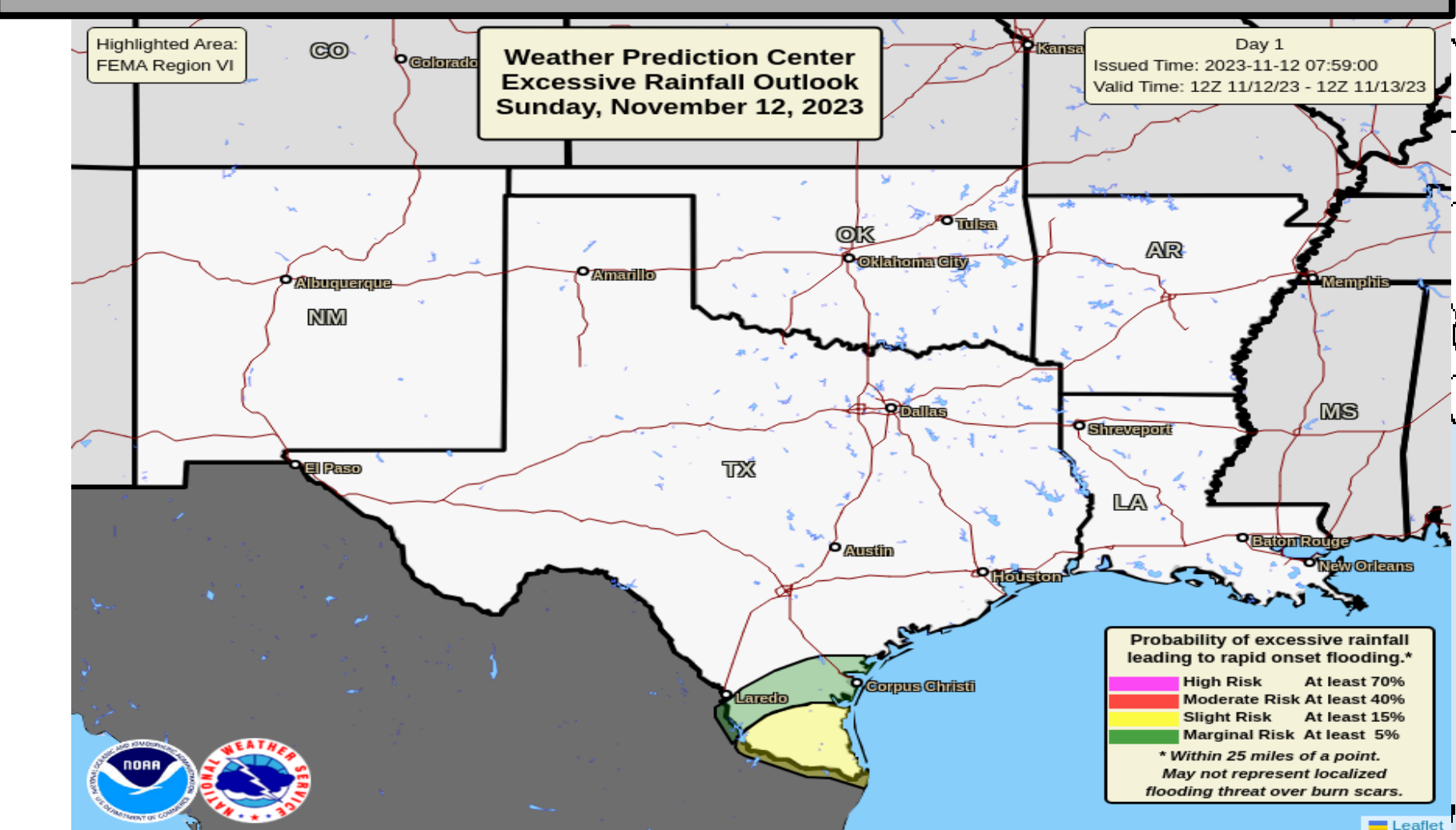


**Slight risk for heavy rainfall/flash flooding in S TX.**

## Severe Weather Outlook

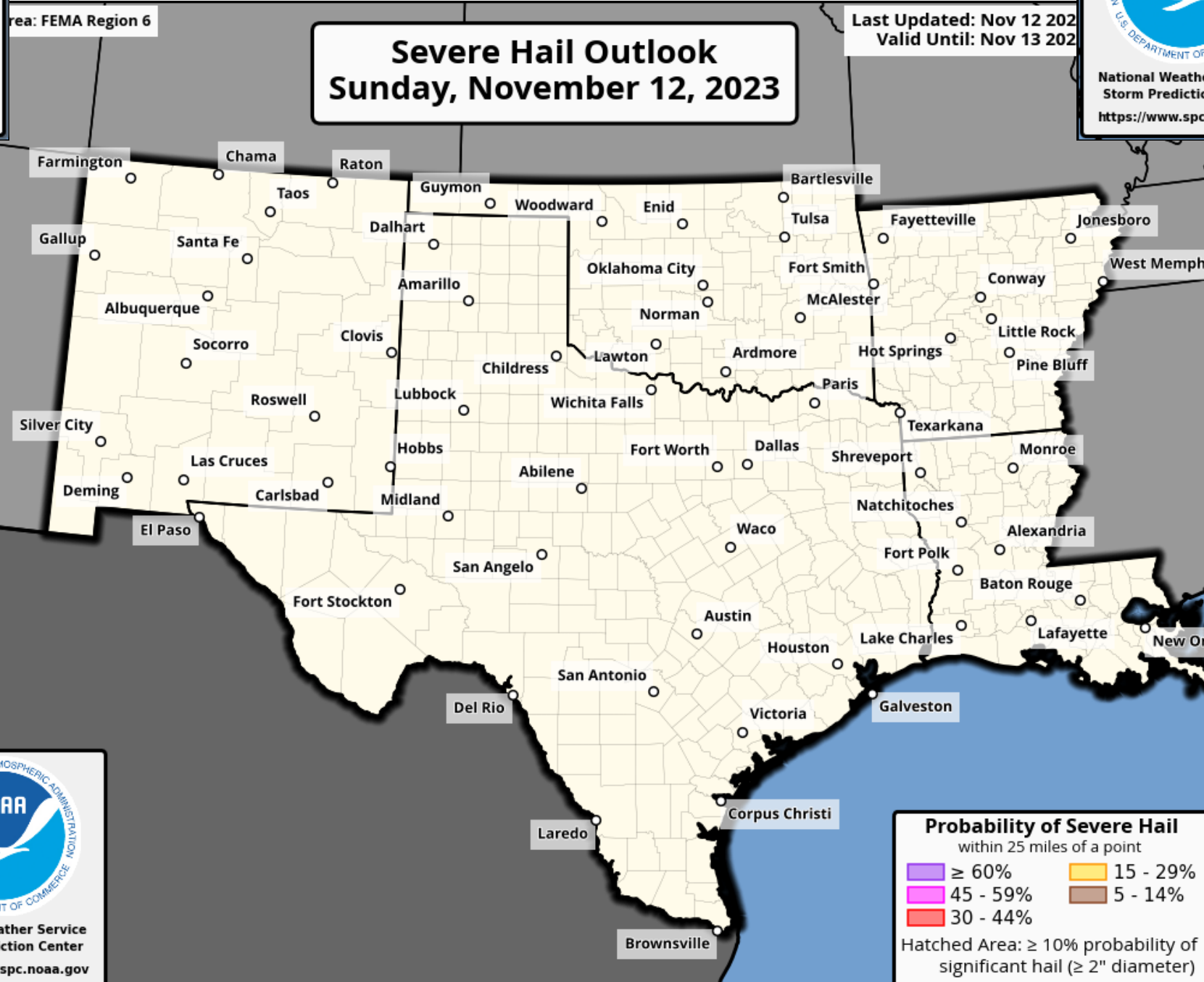
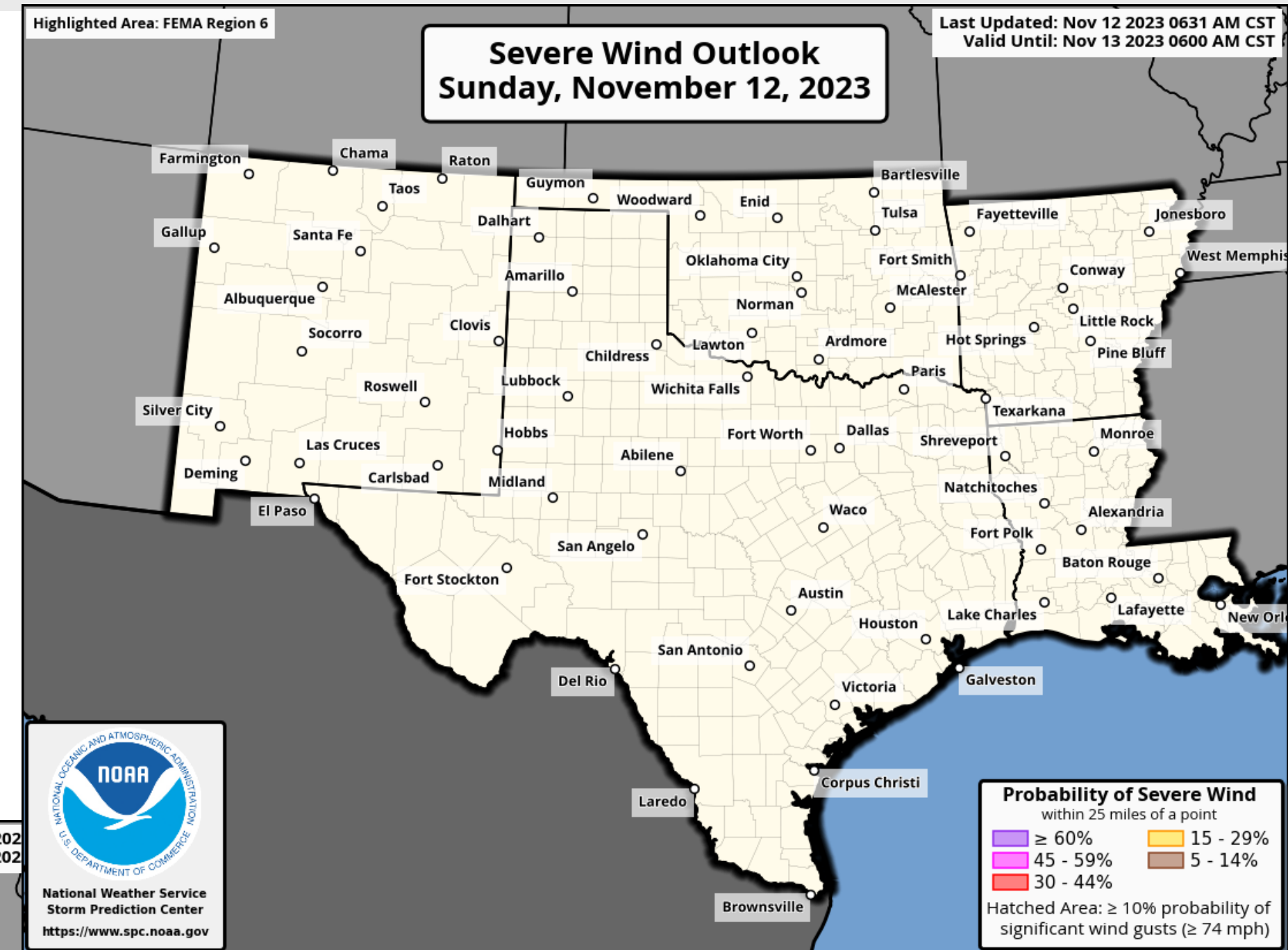
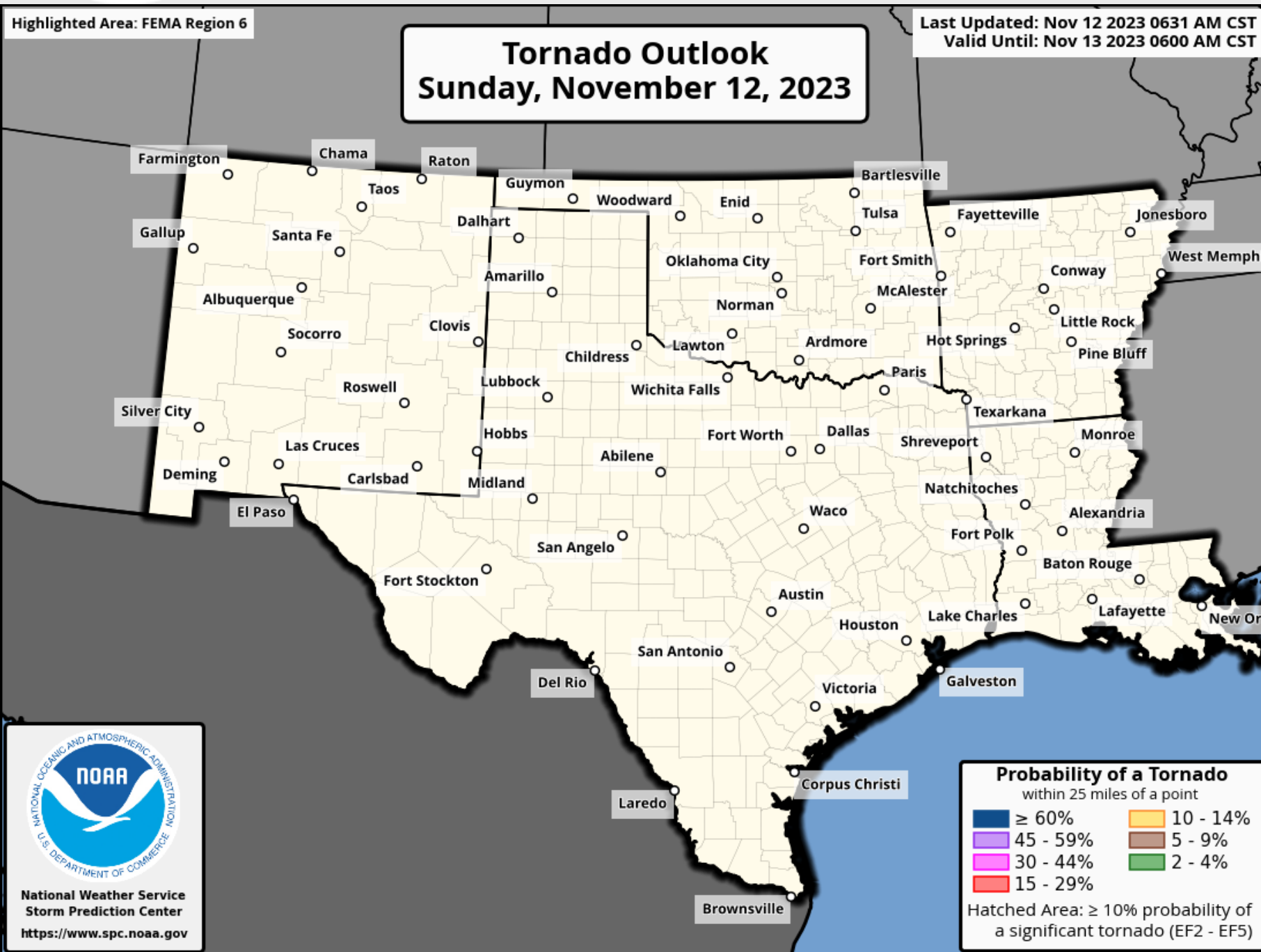


## Excessive Rainfall Outlook





# Today's Tornado & Severe Wind / Hail Probabilities



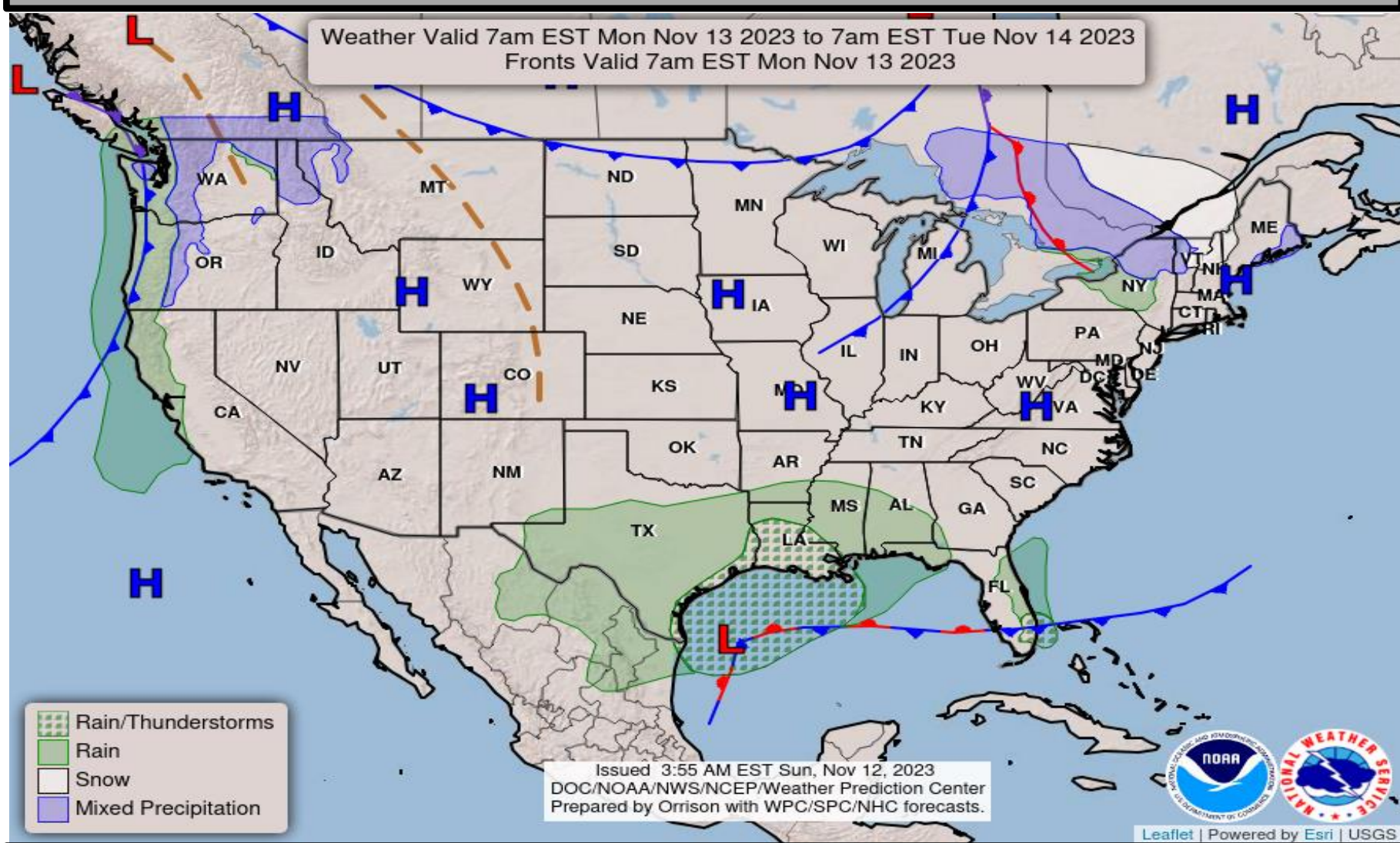
Last Updated: 11/12/2023 7:49 AM CT

Weather Service – Southern Region ROC

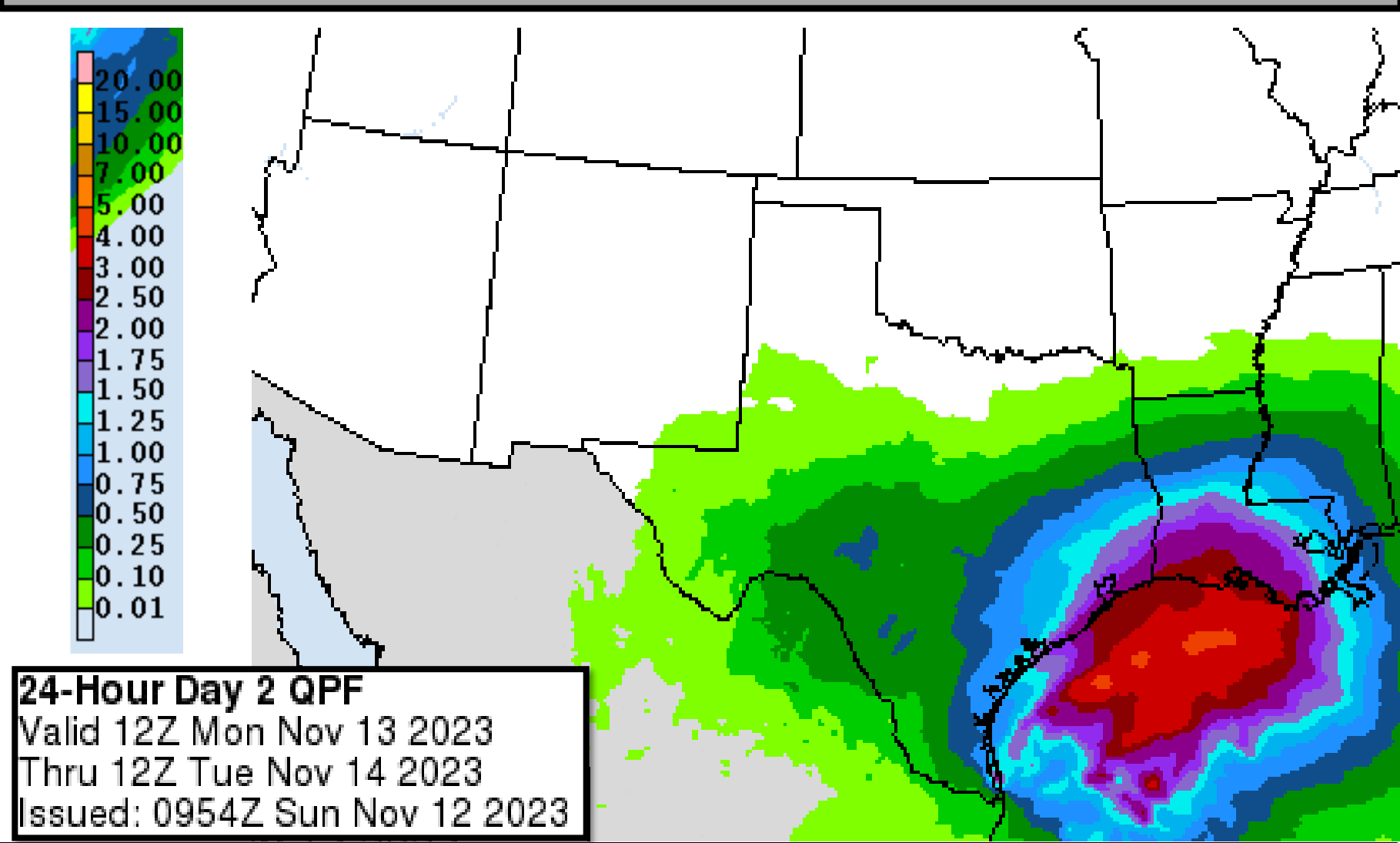


# Tomorrow's Weather

## Forecast Chart

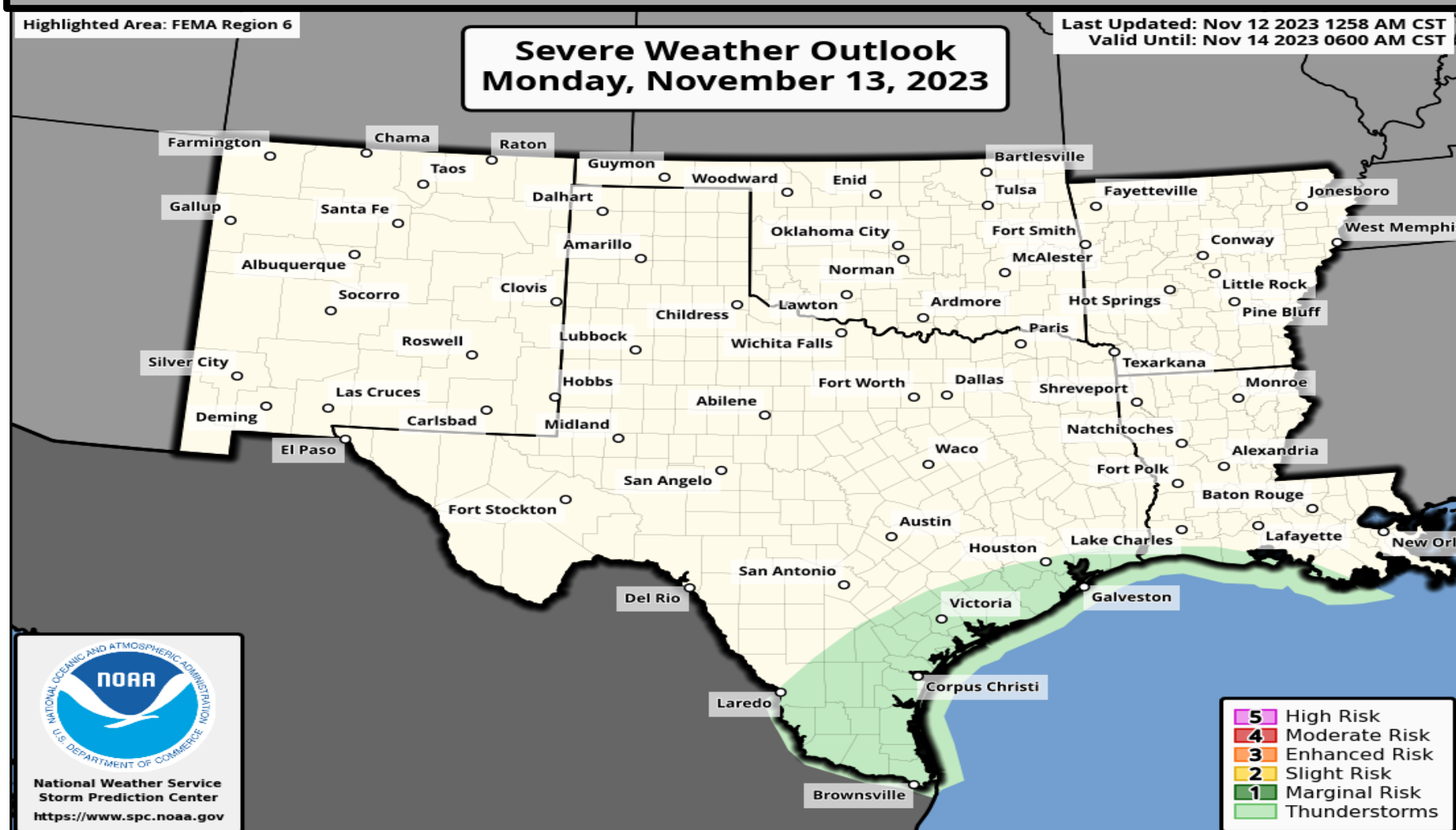


## Forecast Rainfall

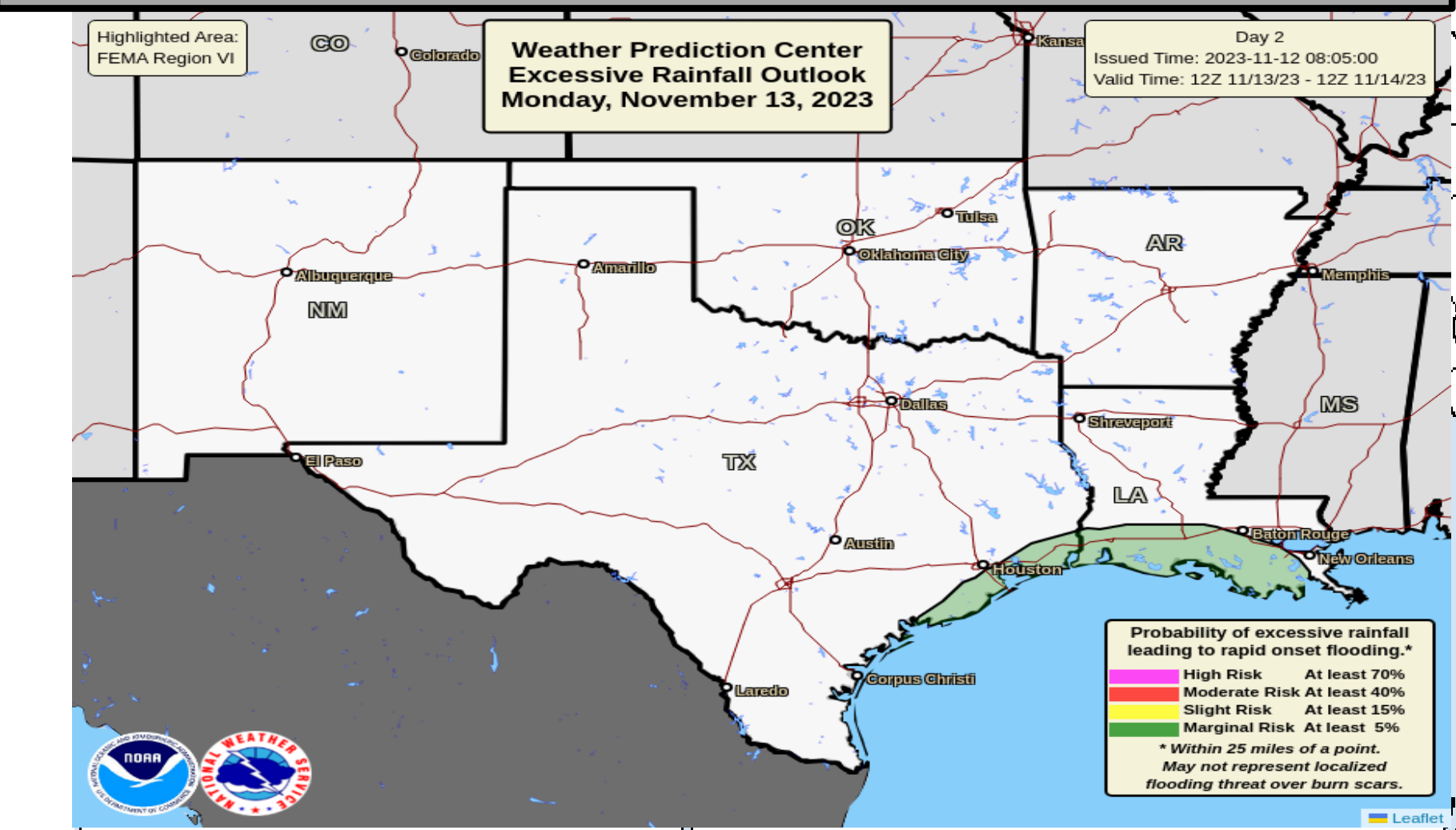


**Heavy rainfall may lead to localized flash flooding in SE TX, S LA.**

## Severe Weather Outlook



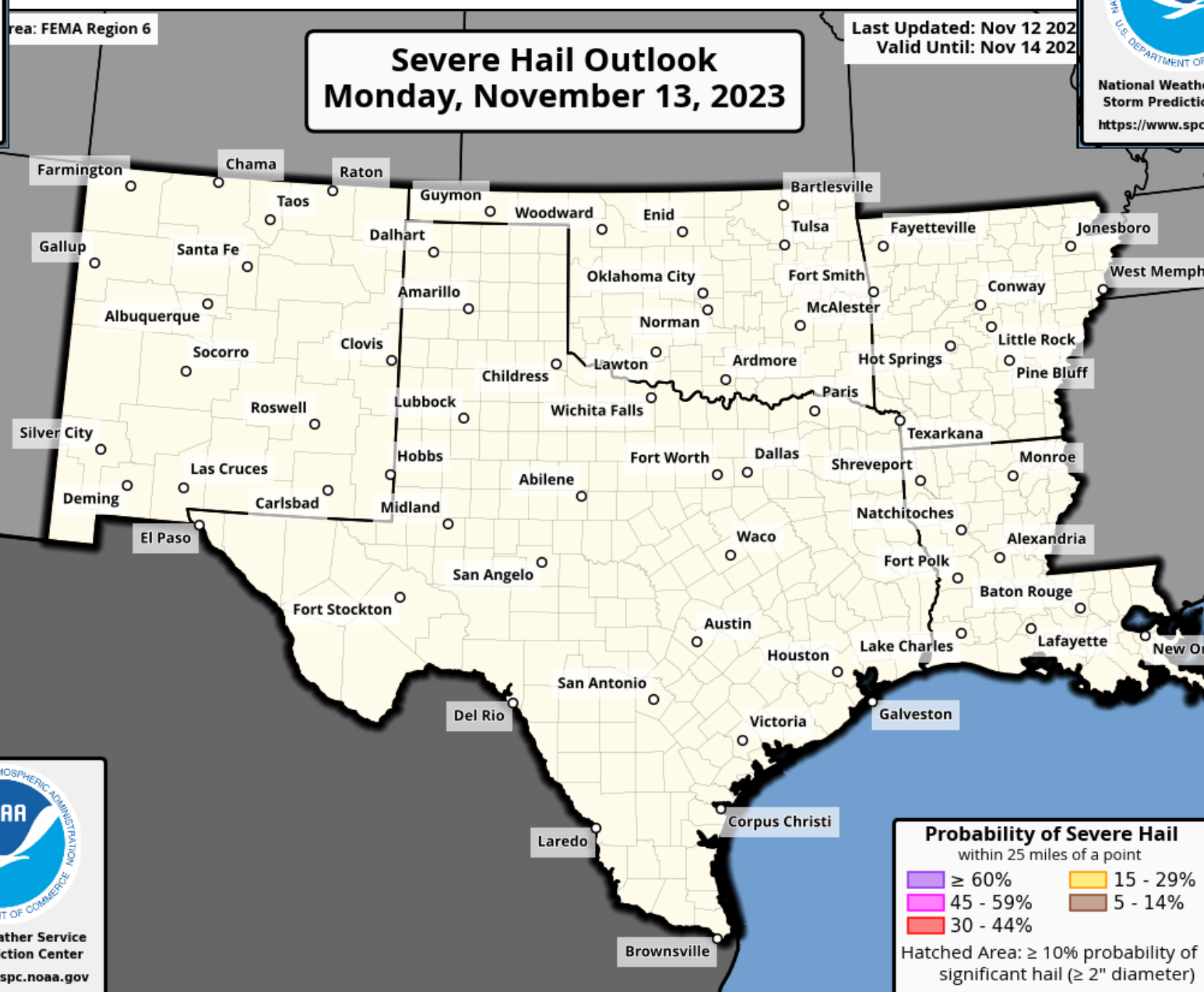
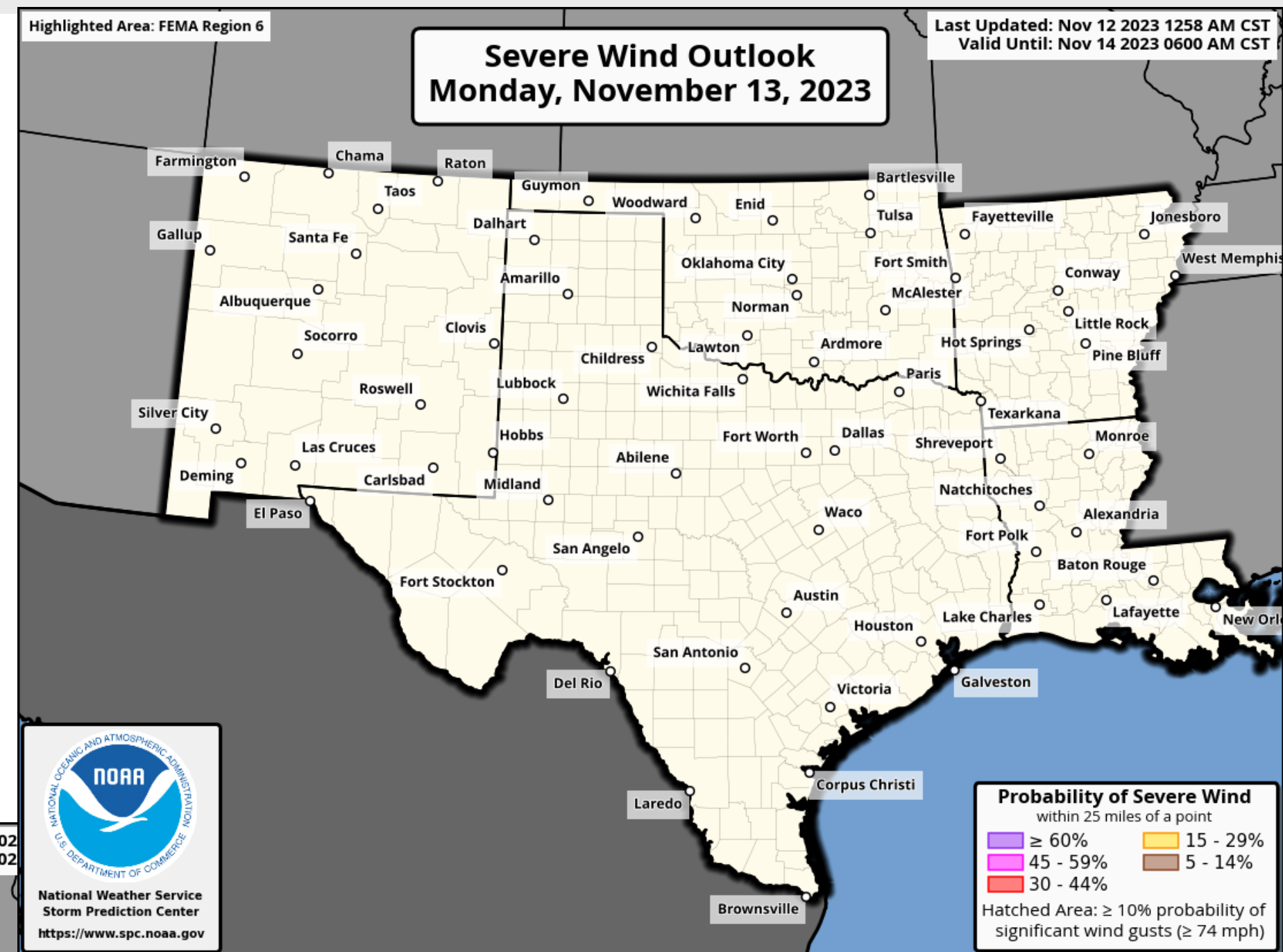
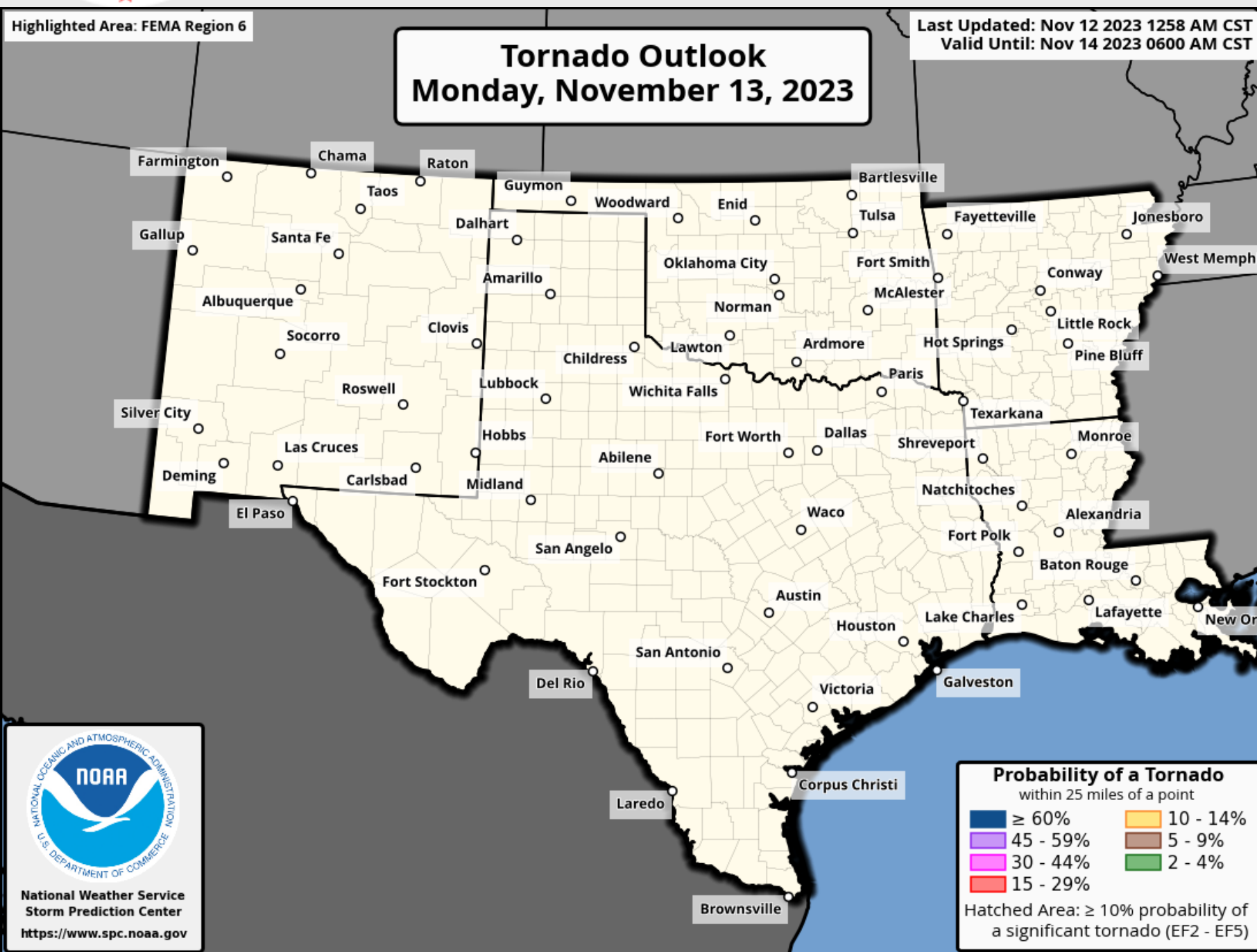
## Excessive Rainfall Outlook







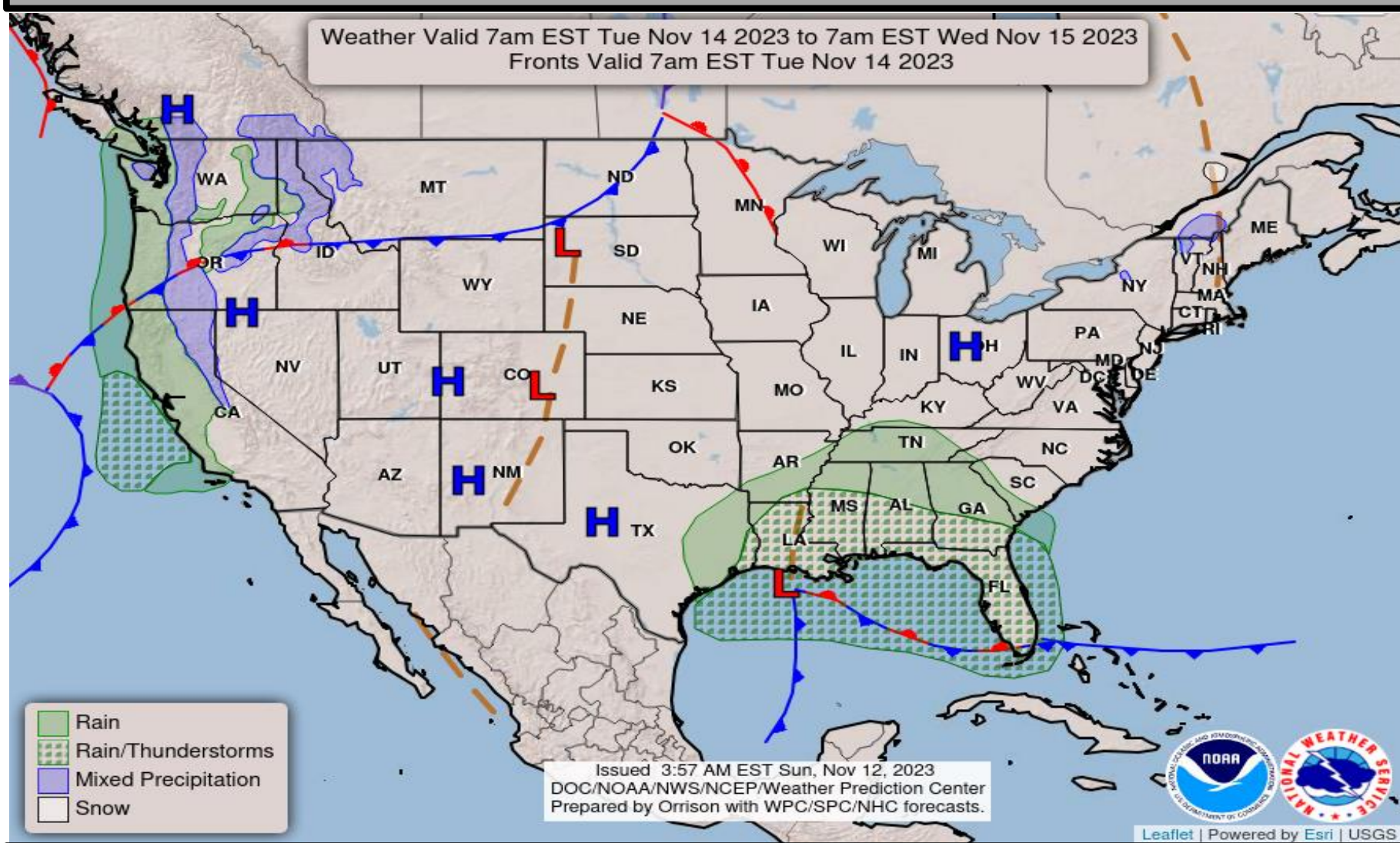
# Tomorrow's Tornado & Severe Wind / Hail Probabilities



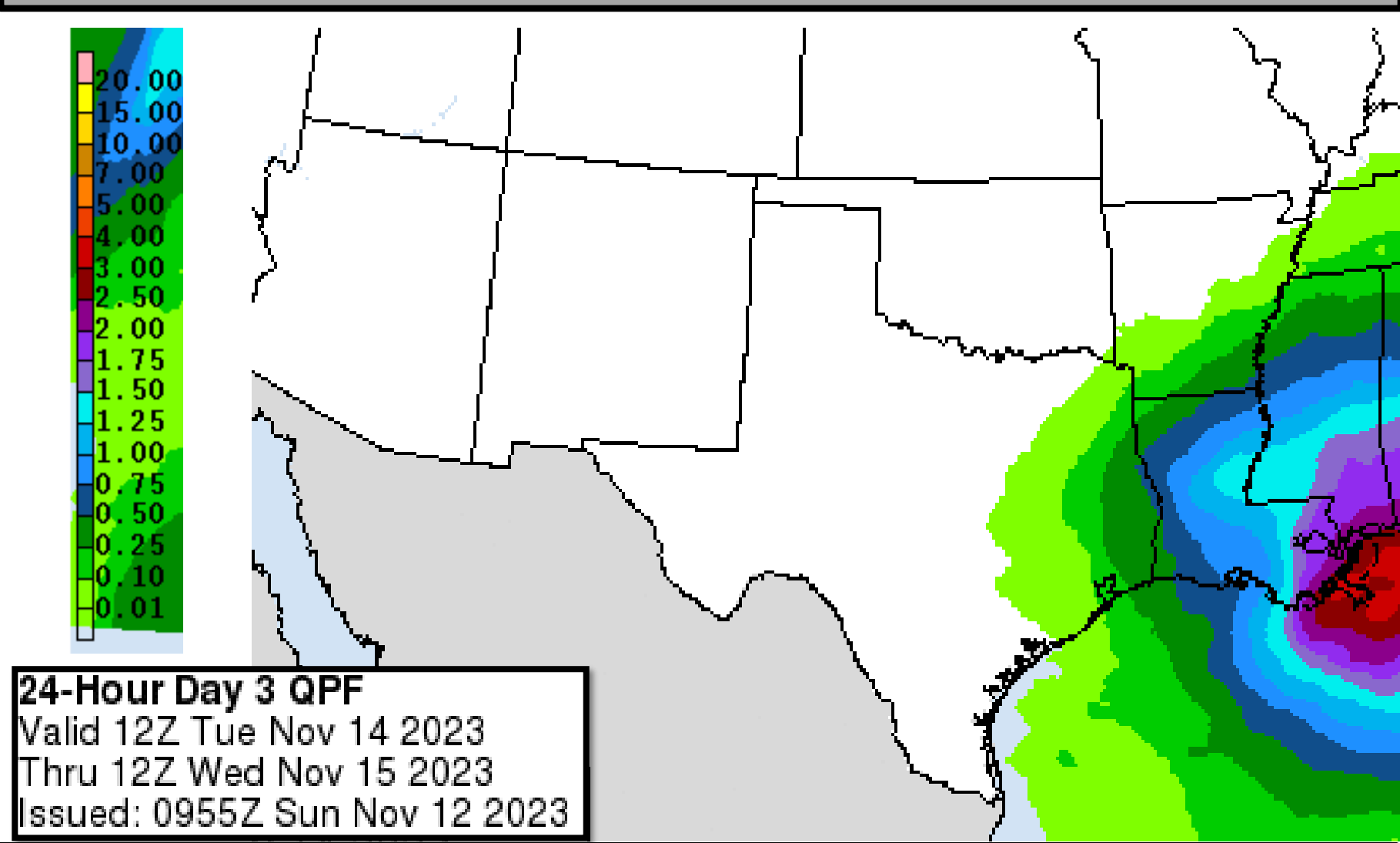


# Tuesday's Weather

## Forecast Chart

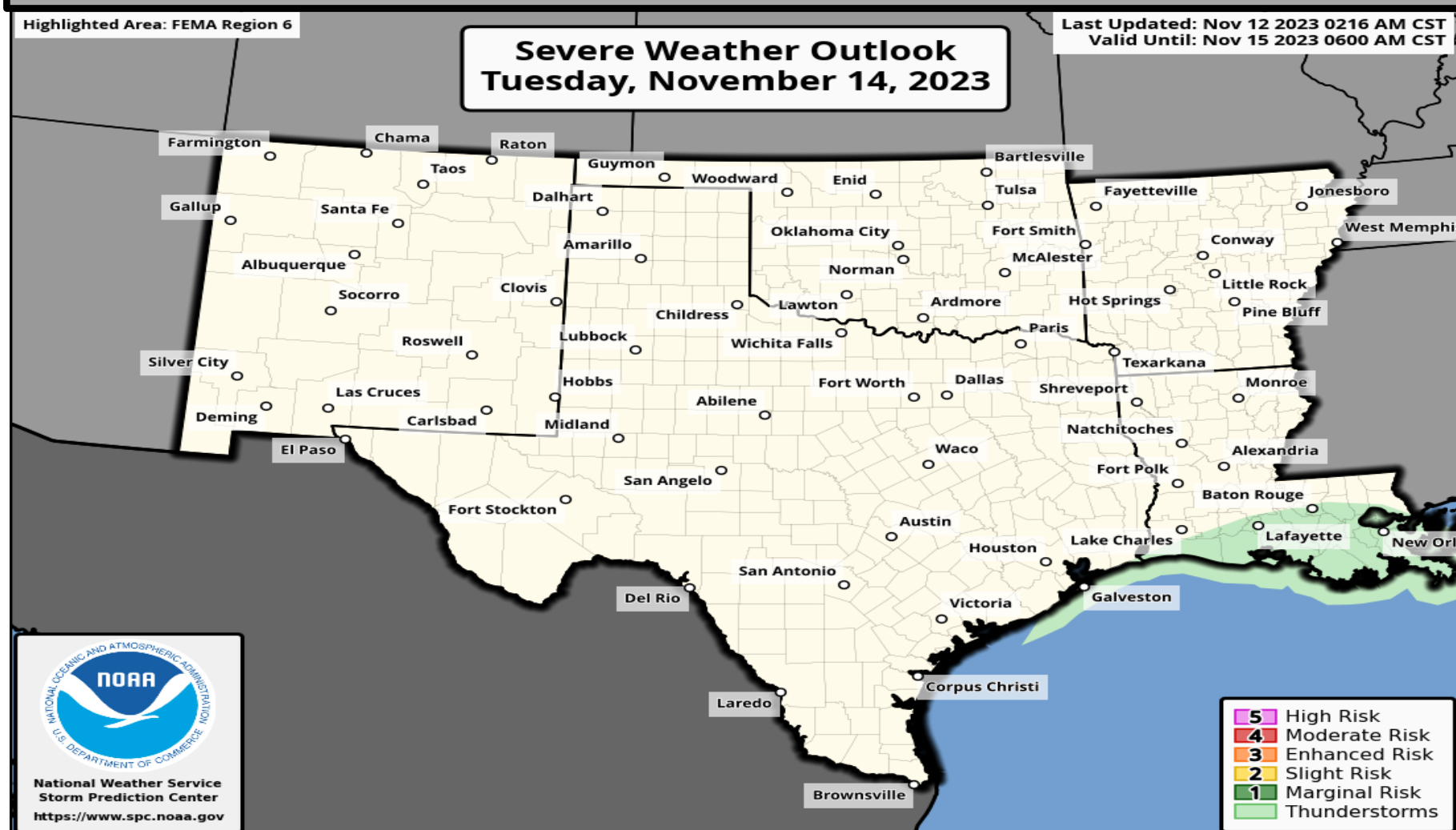


## Forecast Rainfall

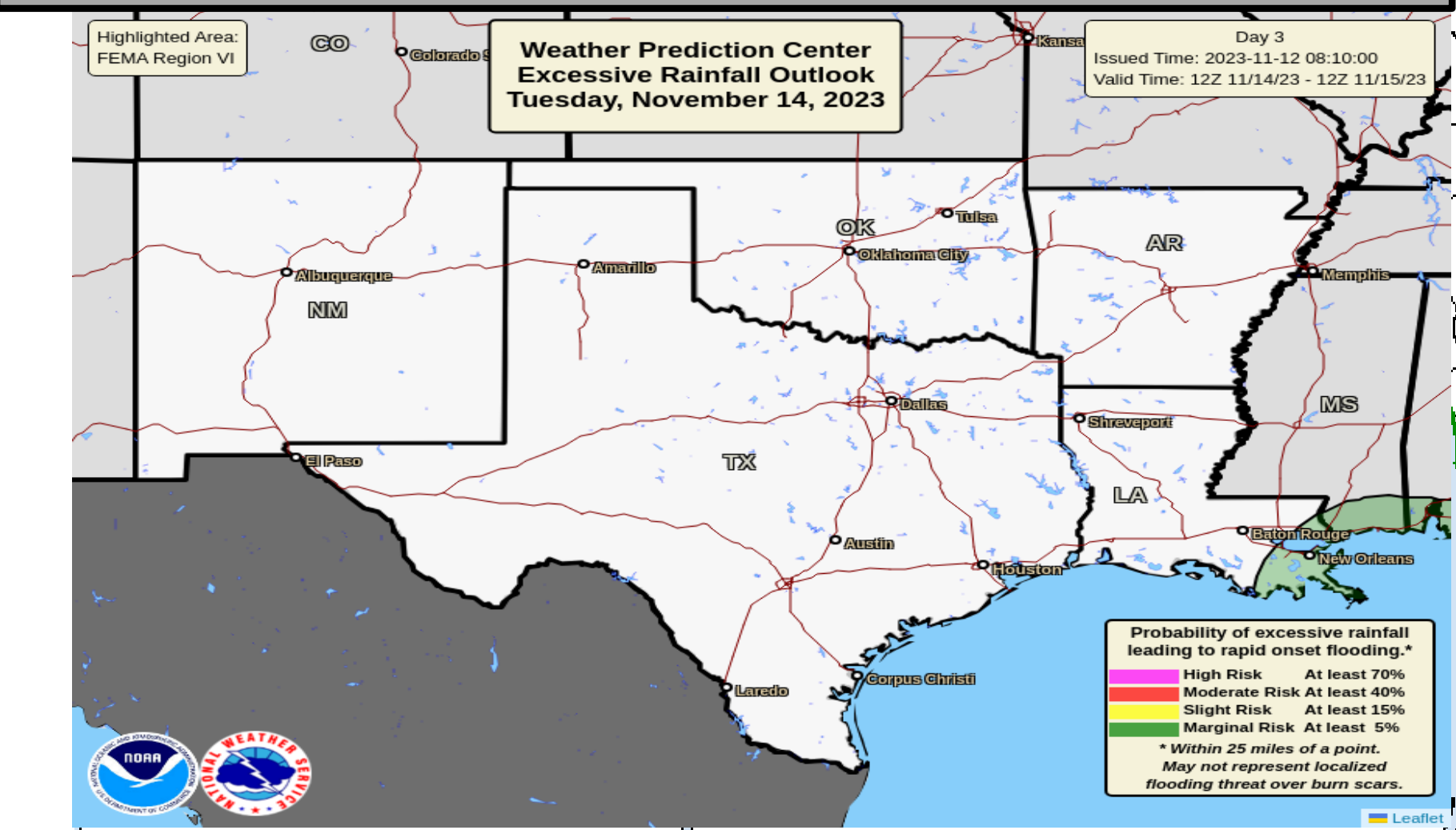


**Heavy rainfall may lead to localized flash flooding in SE LA.**

## Severe Weather Outlook



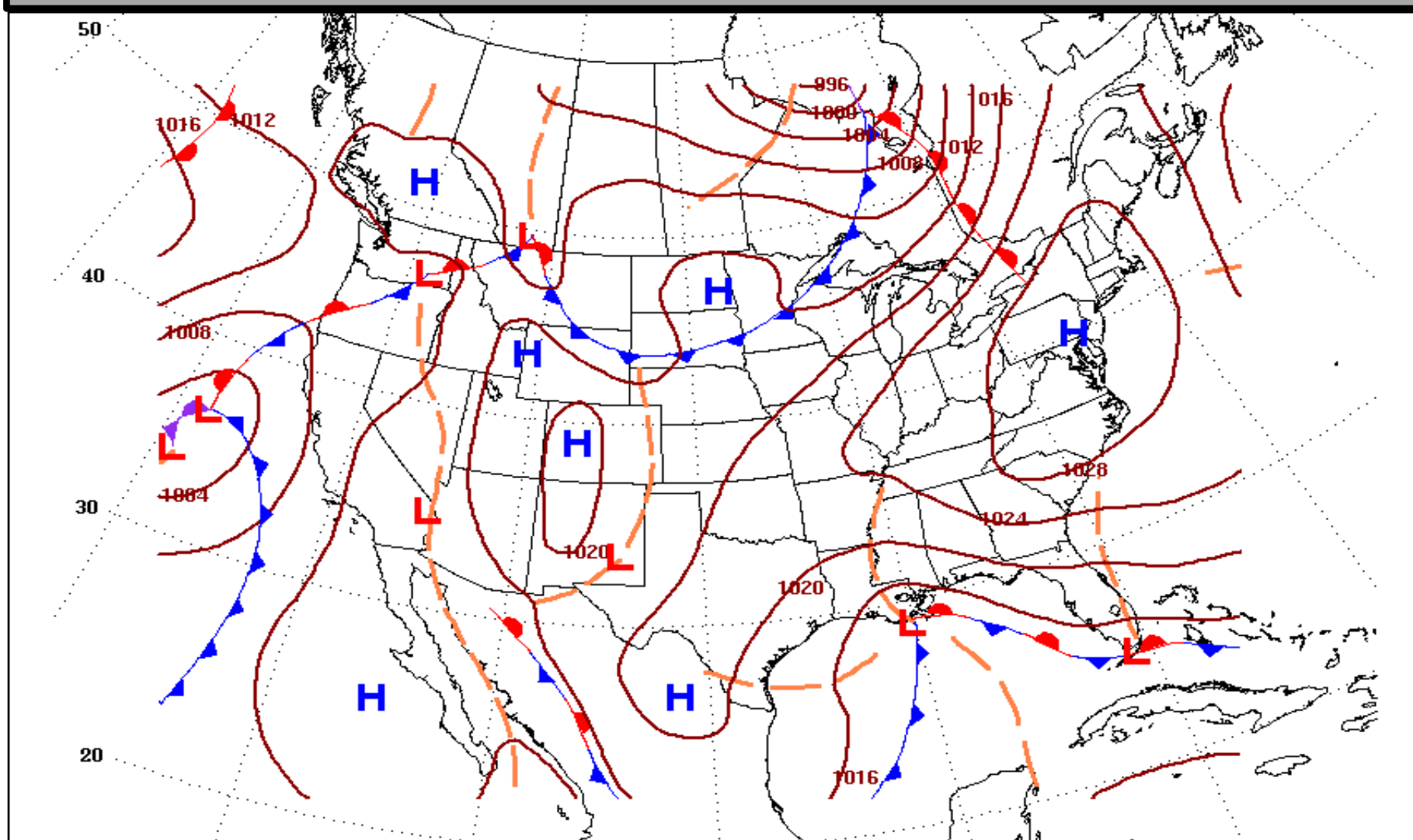
## Excessive Rainfall Outlook



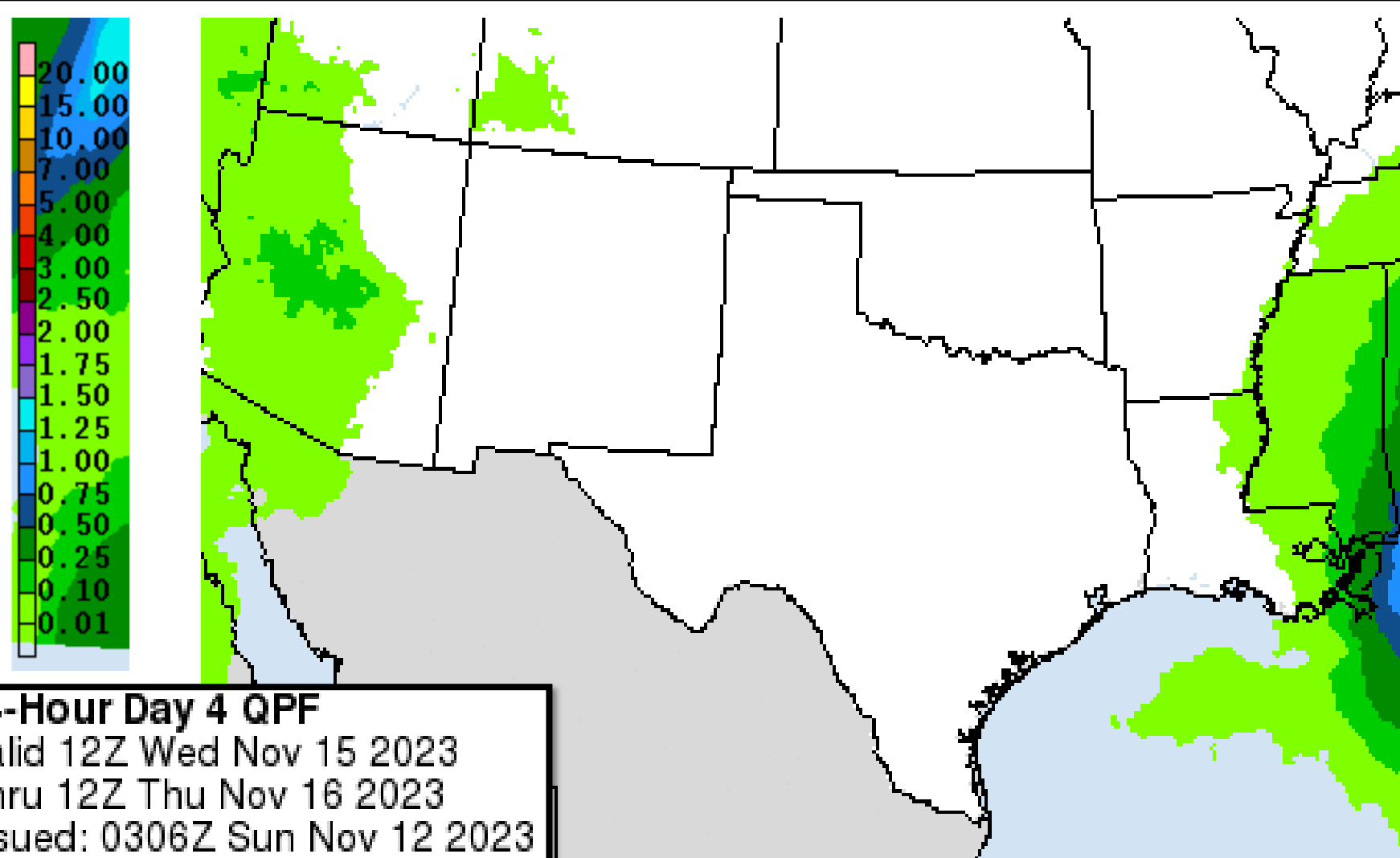


# Wednesday's Weather

## Forecast Chart



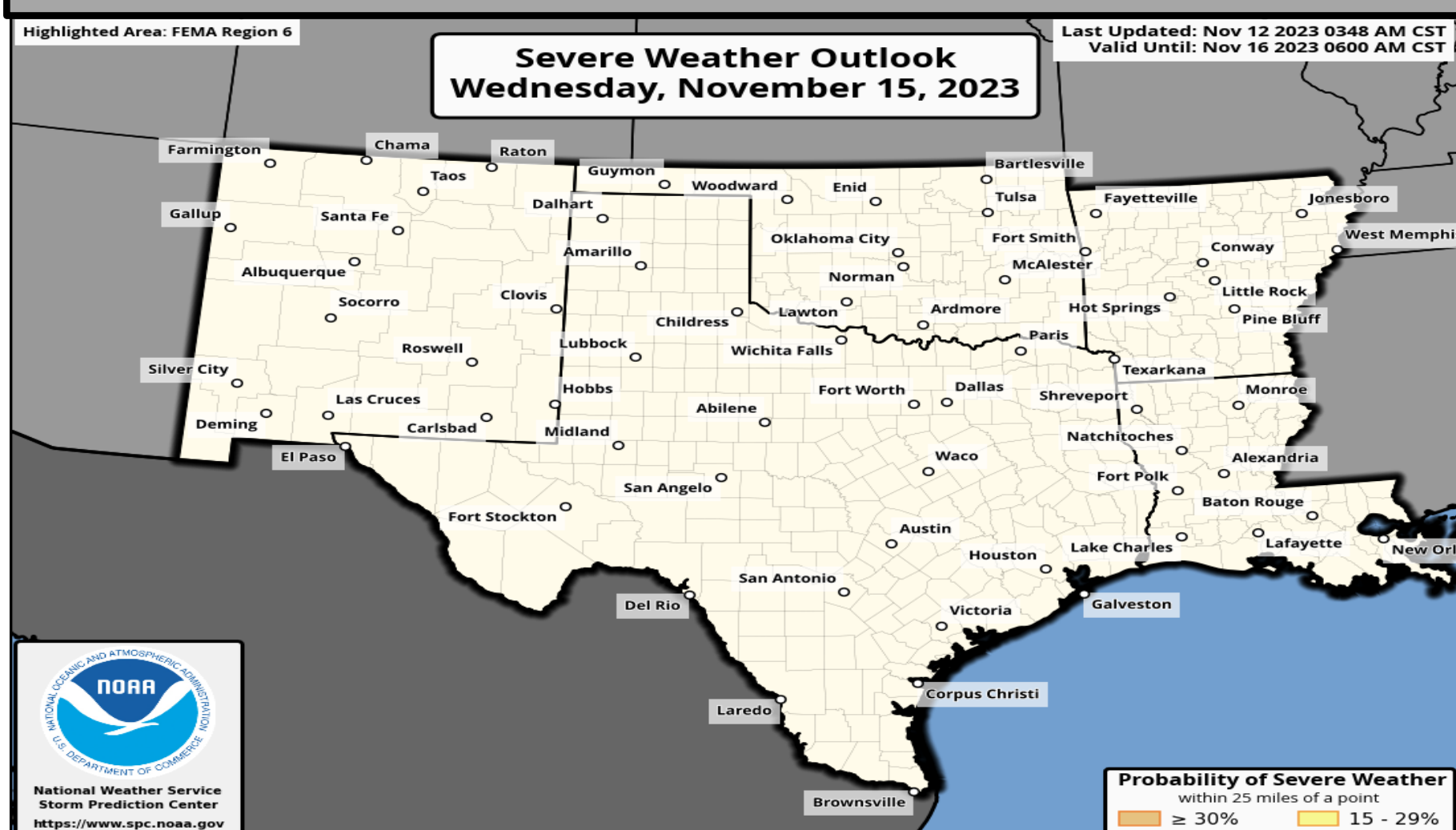
## Forecast Rainfall



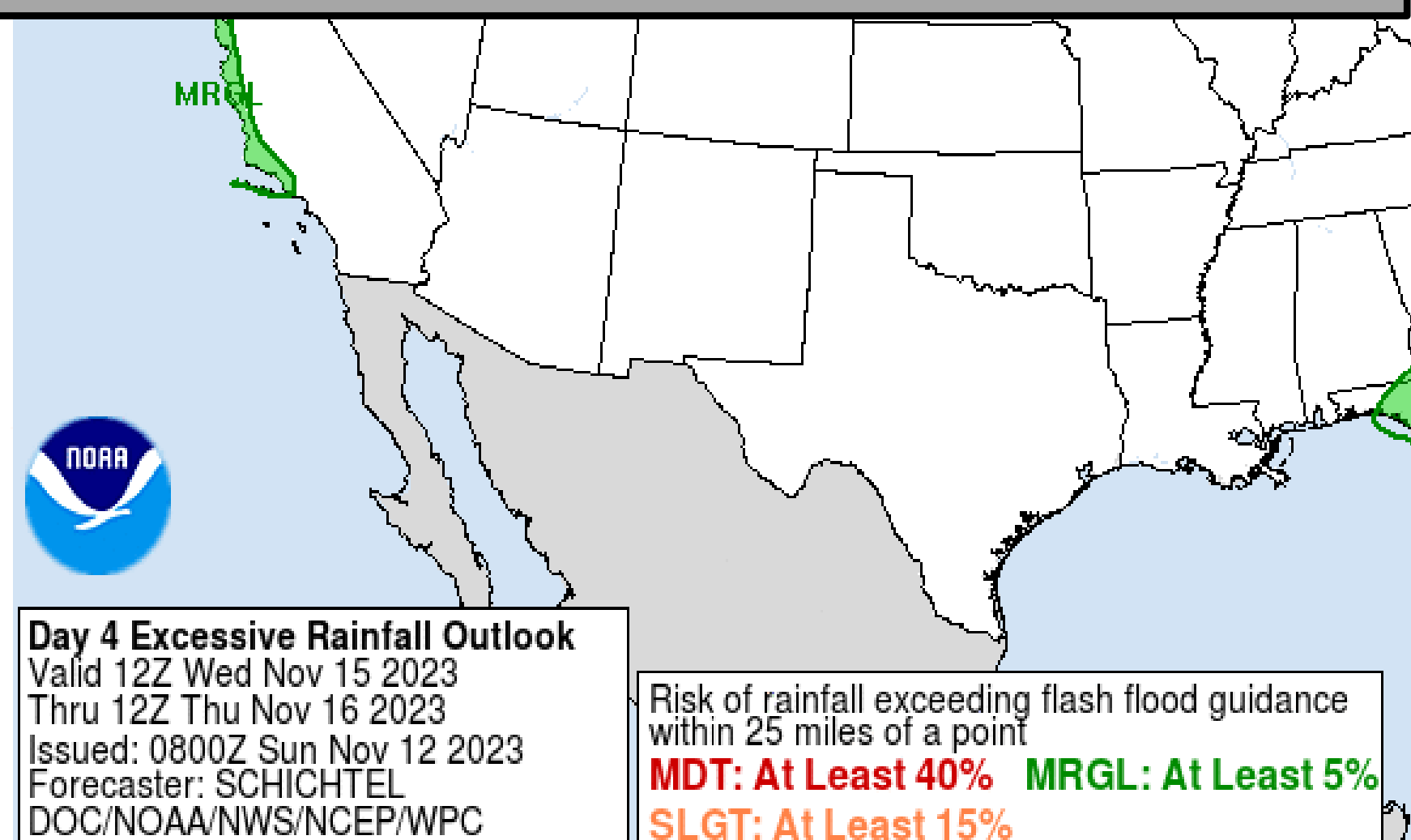
No significant weather expected.

24-Hour Day 4 QPF  
Valid 12Z Wed Nov 15 2023  
Thru 12Z Thu Nov 16 2023  
Issued: 0306Z Sun Nov 12 2023

## Severe Weather Outlook



## Excessive Rainfall Outlook

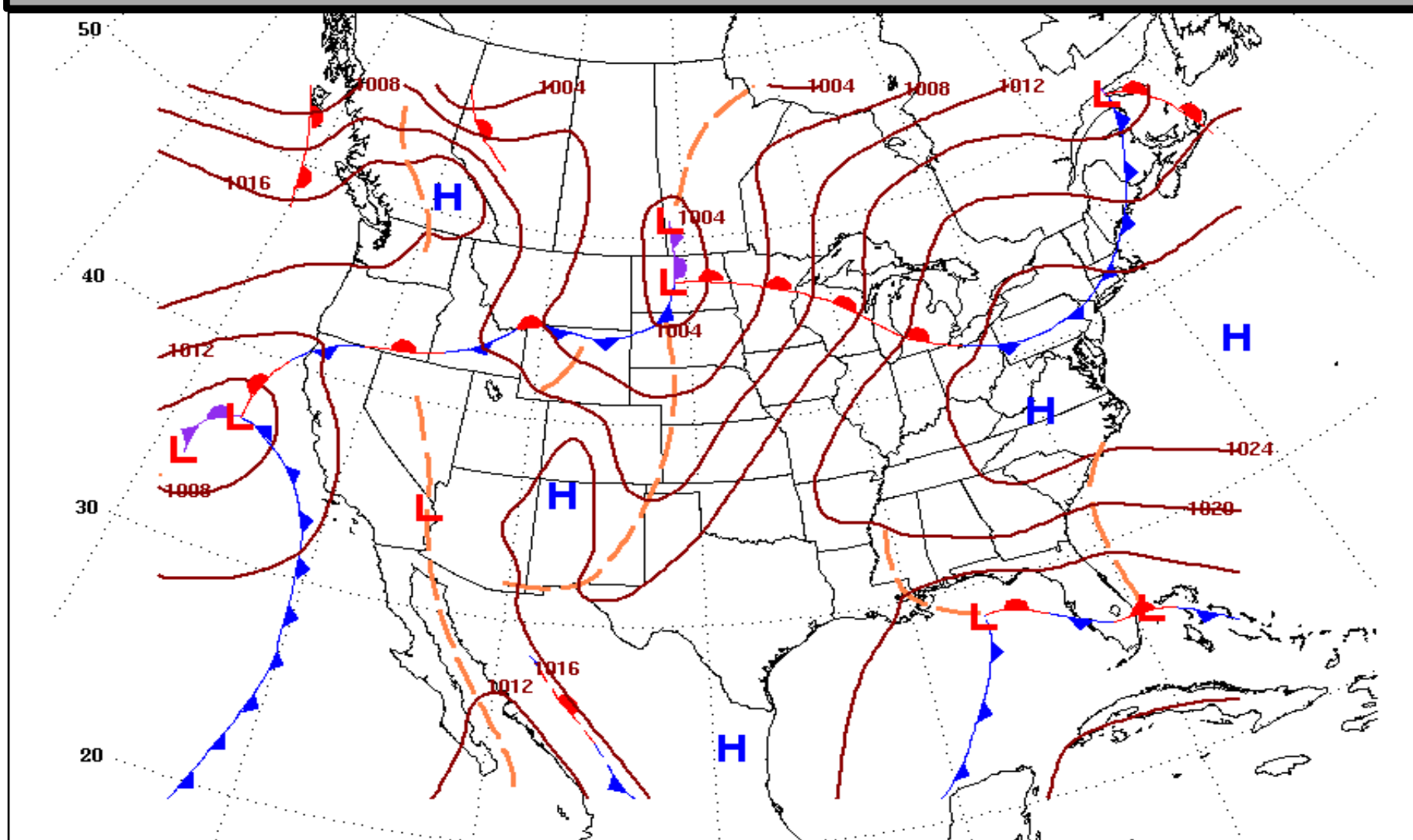


Risk of rainfall exceeding flash flood guidance within 25 miles of a point  
**MDT: At Least 40%** **MRGL: At Least 5%**  
**SLGT: At Least 15%**

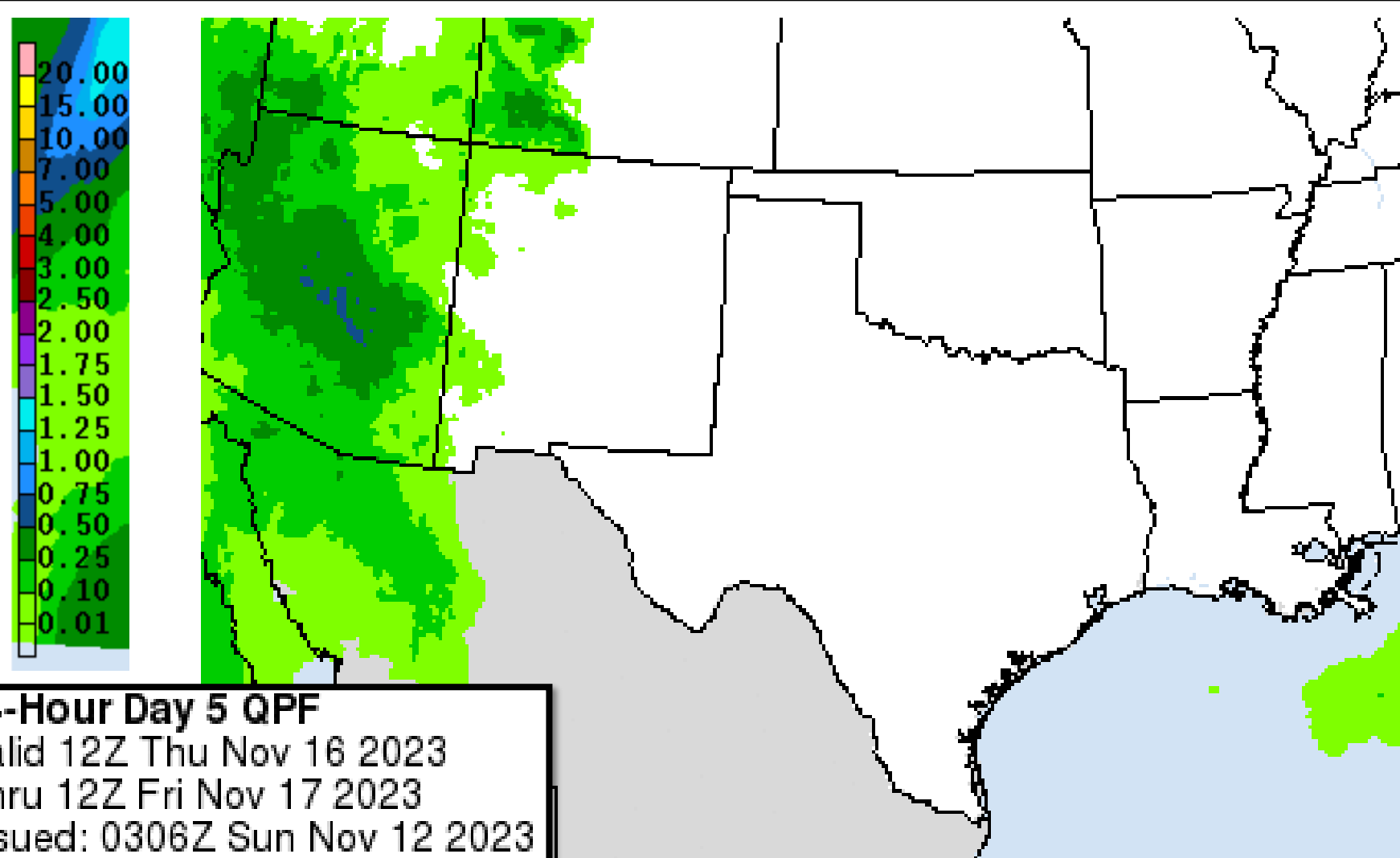


# Thursday's Weather

## Forecast Chart



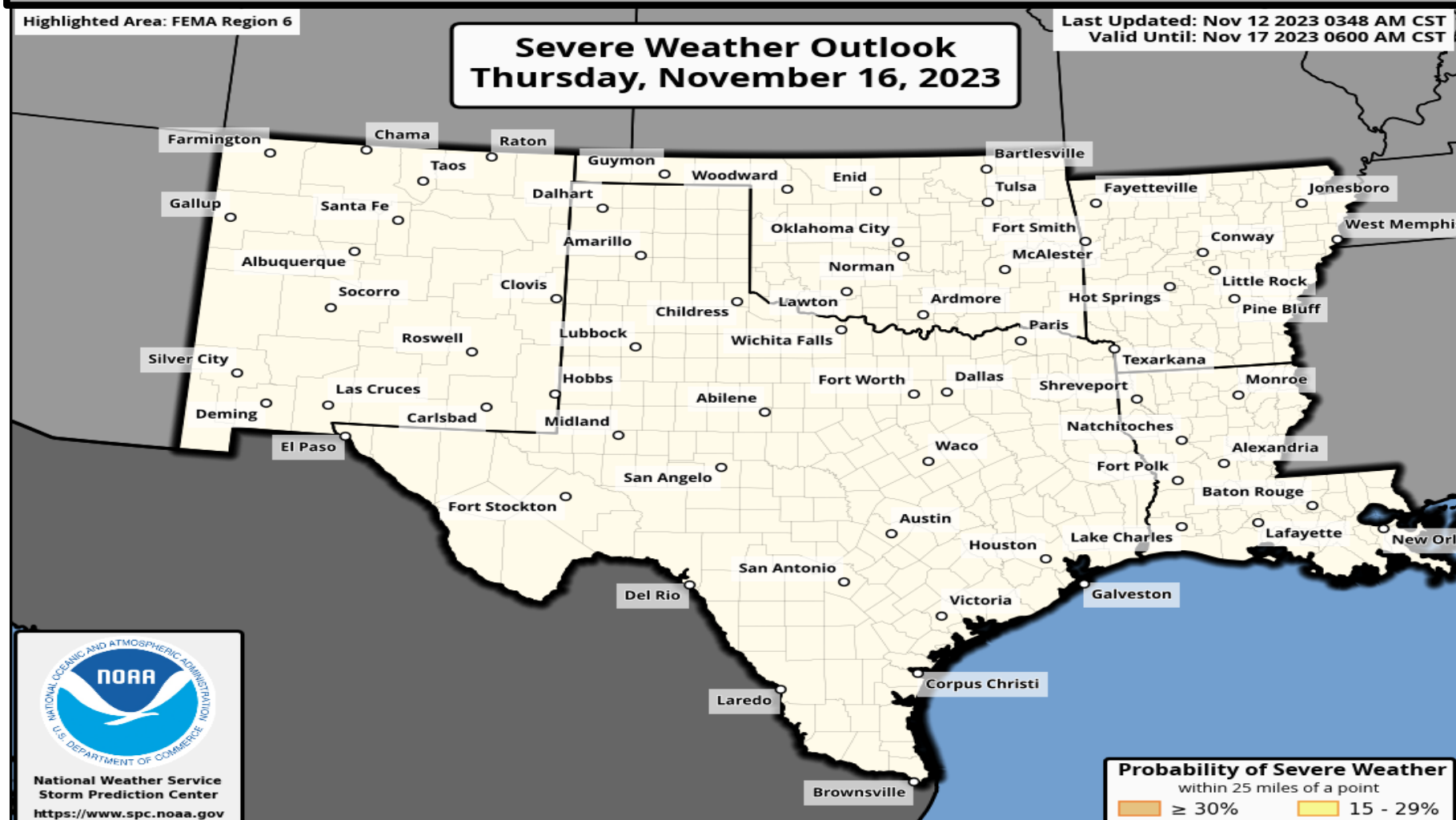
## Forecast Rainfall



No significant weather expected.

24-Hour Day 5 QPF  
Valid 12Z Thu Nov 16 2023  
Thru 12Z Fri Nov 17 2023  
Issued: 0306Z Sun Nov 12 2023

## Severe Weather Outlook

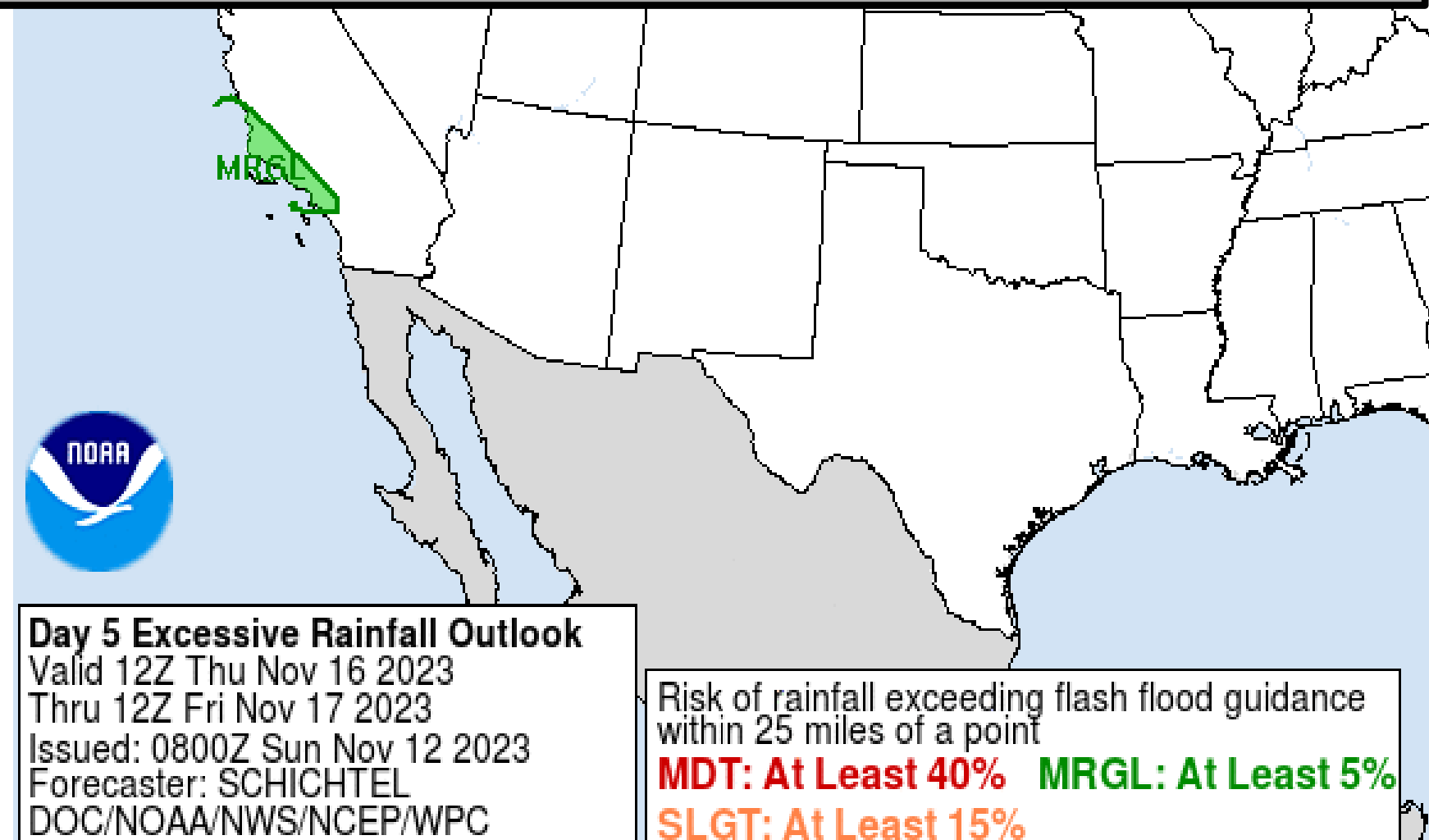


Severe Weather Outlook  
Thursday, November 16, 2023

Last Updated: Nov 12 2023 0348 AM CST  
Valid Until: Nov 17 2023 0600 AM CST

Probability of Severe Weather  
within 25 miles of a point  
≥ 30% 15 - 29%

## Excessive Rainfall Outlook



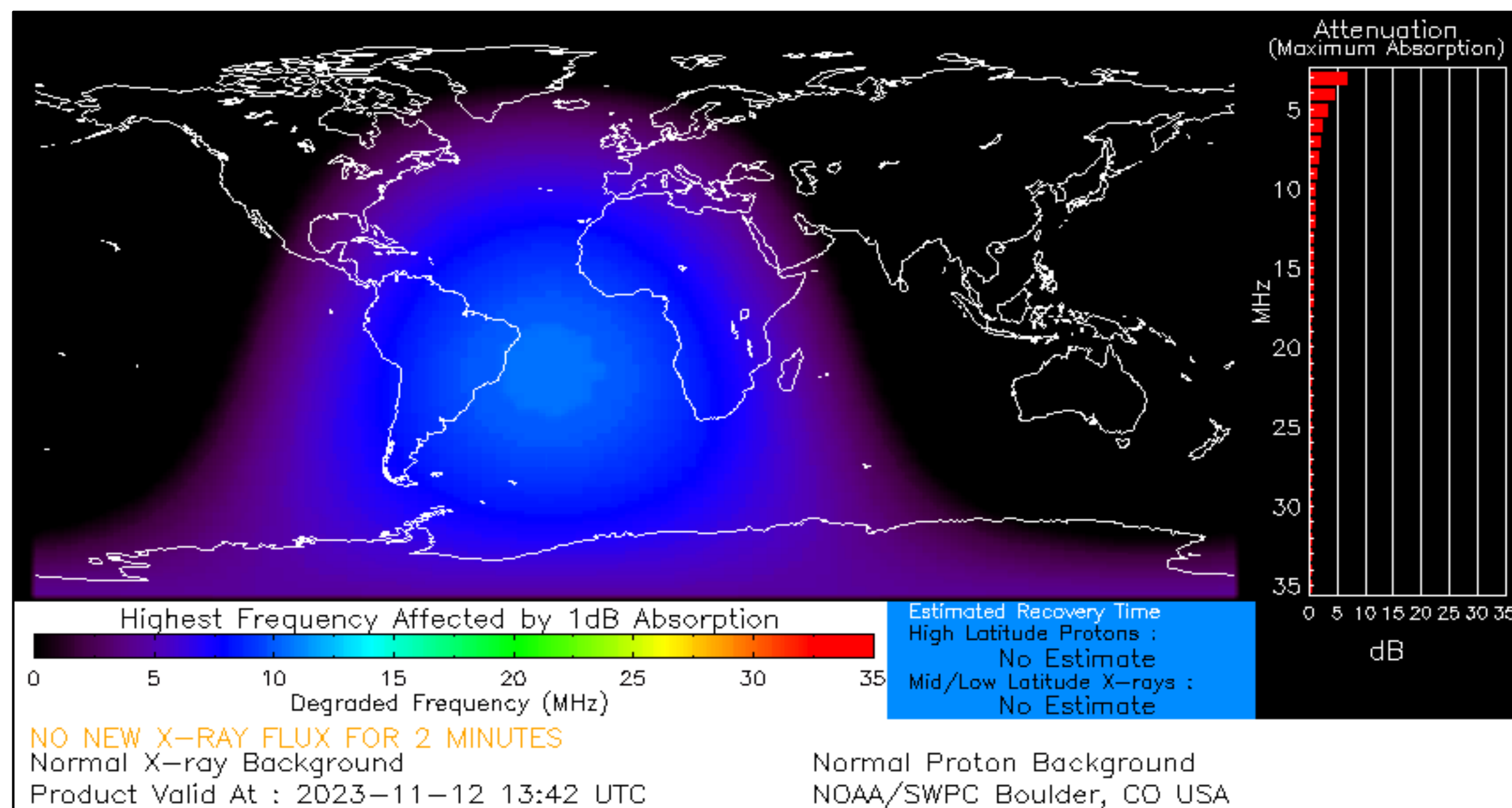
Day 5 Excessive Rainfall Outlook  
Valid 12Z Thu Nov 16 2023  
Thru 12Z Fri Nov 17 2023  
Issued: 0800Z Sun Nov 12 2023  
Forecaster: SCHICHTEL  
DOC/NOAA/NWS/NCEP/WPC

Risk of rainfall exceeding flash flood guidance  
within 25 miles of a point  
MDT: At Least 40% MRGL: At Least 5%  
SLGT: At Least 15%



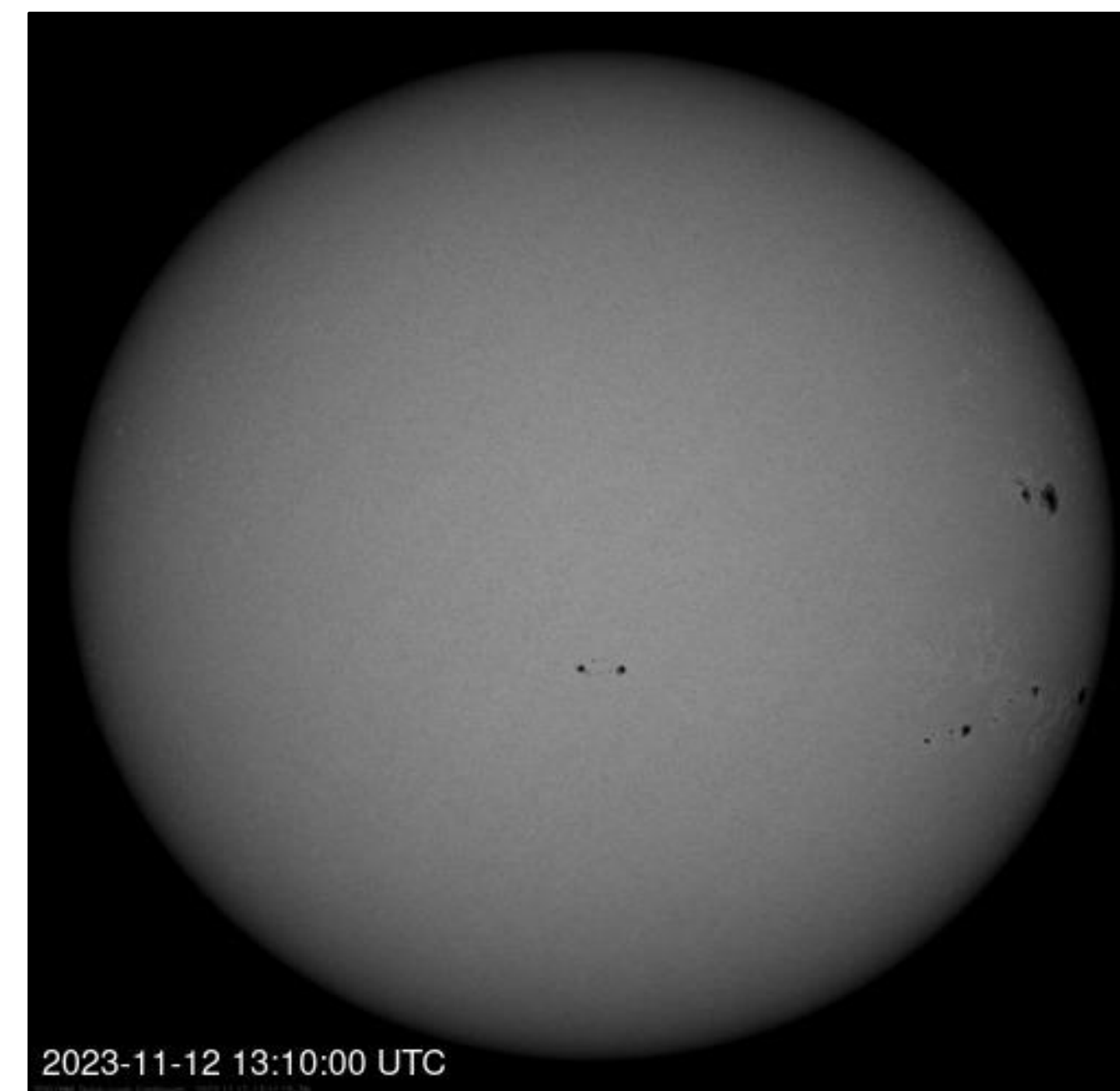
# Space Weather 3-Day Forecast

	Sunday	Monday	Tuesday
<b>Geomagnetic Storms</b>	<b>Moderate G2 (Max Kp = 6)</b>	<b>Unsettled (Max Kp = 3)</b>	<b>Unsettled (Max Kp = 3)</b>
<b>Solar Radiation Storm (S1-S5)</b>	<b>5%</b>	<b>5%</b>	<b>5%</b>
<b>Radio Blackout (R1-R2)</b>	<b>45%</b>	<b>45%</b>	<b>40%</b>
<b>Radio Blackout (R3-R5)</b>	<b>5%</b>	<b>5%</b>	<b>5%</b>



[Click here for a Description of the Space Weather Storm Scales](#)

[Click here for the Latest 3-Day Space Weather Forecast Text](#)





**For more information, please contact:**

**National Weather Service  
Southern Region Headquarters  
Regional Operations Center  
Fort Worth, TX**

**Phone: (682) 703-3747**

**E-mail: [sr-srh.roc@noaa.gov](mailto:sr-srh.roc@noaa.gov)**

**Web: <http://www.weather.gov/srh>**



## Weather "Threat" Matrix for FEMA Region VI

Color	Definition	Criteria	Example(s)
Green	<p style="text-align: center;"><b>Very Common</b></p> <p>Safety: Rarely a Direct Threat to Life and Property Impact Potential: Typically Results in Little Inconvenience to Daily Routines</p>	<p>Severe: Marginal Risk from SPC Flooding: Minor flooding expected over localized areas Tropical: None Fire Weather: No Watches/Warnings, fuel moisture above 10% or green up active</p>	<ul style="list-style-type: none"> <li>Thunderstorms expected over LA this afternoon; a few may produce winds to knock down a few trees</li> <li>Something that happens almost every day in a particular season such as sea breeze storms in coastal TX</li> </ul>
Yellow	<p style="text-align: center;"><b>Somewhat Common – Happens Frequently</b></p> <p>Safety: Rarely a Direct Threat to Life and Property Impact Potential: Typically Results in Some Inconvenience to Daily Life</p>	<p>Severe: Slight Risk from SPC Flooding: Nuisance flooded expected for a widespread area, or Minor flooding expected over isolated areas Tropical: A weak tropical wave expected to move towards or near any coastline Fire Weather: Red Flag Watches/Warnings and/or SPC outlines enhanced or critical fire outlook</p>	<ul style="list-style-type: none"> <li>2-3 inches of rainfall expected over central AR today and tonight; some minor (brief) street flooding possible</li> <li>Scattered severe storms possible, one or two tornadoes expected, along with reports of strong winds/wind damage and ~1" hail</li> </ul>
Orange	<p style="text-align: center;"><b>Uncommon – A Few Times a Year</b></p> <p>Safety: Often Threatening to Life and Property, Some Damage Unavoidable Impact Potential: Typically Results in Minor Disruption to Daily Life</p>	<p>Severe: Enhanced Risk from SPC Flooding: Minor flooding expected over a widespread area (including urban locations), or Moderate flooding expected over isolated areas Tropical: A Tropical Storm expected to move towards or near any coastline Fire: Critical fire outlook for more than 2 consecutive days, Warnings for 2 or more consecutive days, D3-D4 drought conditions</p>	<ul style="list-style-type: none"> <li>A snow/sleet mix is expected to move through or near the DFW area tomorrow morning; travel impacts likely</li> <li>Numerous severe storms possible, a few tornadoes possible along with several reports of wind damage along with damaging hail</li> <li>Some large fires reported, burn bans advertised, critical conditions expected</li> </ul>
Red	<p style="text-align: center;"><b>Rare – Once every 1-5 Years</b></p> <p>Safety: Extensive Property Damage Likely, Life Saving Actions Also will be Needed Impact Potential: Will likely result in Large Disruption to Daily Life</p>	<p>Severe: Moderate Risk from SPC Flooding: Moderate flooding expected over a widespread area (including urban locations) Tropical: A Hurricane expected to move towards or near any coastline Fire: Large areas of critical conditions for 2 or more days, Warnings for 3 or more days, Severe to extreme drought</p>	<ul style="list-style-type: none"> <li>A Category 1 hurricane will be moving towards the NW Gulf in the next few days</li> <li>Widespread severe storms likely, strong tornadoes, widespread wind damage, and destructive hail</li> <li>Large fires ongoing throughout the area with critical fire weather conditions expected to continue</li> </ul>
Purple	<p style="text-align: center;"><b>Very Rare – Once Every 5-10 Years</b></p> <p>Safety: Property Damage Unavoidable, Immediate Action to Save Life will be Needed Impact Potential: Typically Results in Long-Lived Widespread Major Disruption to Daily Life</p>	<p>Severe: High Risk from SPC Flooding: Major flooding expected over a widespread area (including urban locations) Tropical: A Major Hurricane (Cat3 or greater) expected to move towards or near any coastline Fire: Large area of critical conditions for 2 or more days, Warnings for 3 or more days, Long term (months) of severe to extreme drought</p>	<ul style="list-style-type: none"> <li>A Category 4 hurricane is headed towards the SE LA; major storm surge, flooding and damaging winds anticipated to begin tomorrow</li> <li>Widespread severe storms expected, tornado outbreak probable with long-lived, very widespread and particularly intense storms</li> </ul>

**Criteria for the color codes in this briefing is to the left, please provide any feedback to**

[sr-srh@noaa.gov](mailto:sr-srh@noaa.gov)