



FEMA



Prepared by
Melissa Beat

FEMA Region 6 Weather Threat Briefing

Tuesday, May 06, 2025

Disclaimer: The purpose of this briefing is to provide a **Regional** weather threat assessment and is meant as a general overview. County/Parish decision makers should consult their local NWS forecast offices for the latest detailed, local weather information. To find your local NWS forecast office, go to www.weather.gov/srh.



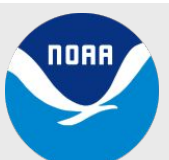
National Oceanic and
Atmospheric Administration
U.S. Department of Commerce

National Weather Service
Southern Region



Summary

- **Severe Weather:** Enhanced risk (level 3 of 5) over SE TX today along with a slight risk (level 2 of 5) over N/NW/C/E/SE TX, LA. Marginal risk (level 1 of 5) Wednesday over SE/S TX, SW LA.
- **Flash Flooding:** Slight to moderate risk (levels 2-3 of 4) today over OK, TX, LA and AR. Slight risk (level 2 of 4) over SE TX and S LA on Wednesday. Marginal risk (level 1 of 4) over S LA Thursday into Friday.
- **River Flooding:** Moderate to major flooding in SE LA through Wednesday. Additional minor river flooding in LA, AR and N/E TX with expected rainfall through Wednesday .





FEMA Region 6 Threat Matrix

Next 7 days

	Tuesday, May 6	Wednesday, May 7	Thursday, May 8	Friday, May 9	Saturday, May 10	Sunday, May 11	Monday, May 12
Severe Storms	SE TX	SE/STX, SW LA					
	N/NW/C/E/SE TX, LA						
Heavy Rain / Flash Flooding	ETX, LA, SAR	SE TX, S LA	S LA	Far SE LA			
	OK, TX Panhandle, N/E TX, SAR						
Fire Weather							
Winter							
River Flooding	SE LA	SE LA	SE LA, AR, N/E TX, LA	SE LA, AR, N/E TX, LA	SE LA, AR, N/E TX, LA	SE LA, AR, N/E TX, LA	SE LA, AR, N/E TX, LA
	AR, N/ETX, LA	AR, N/ETX, LA					

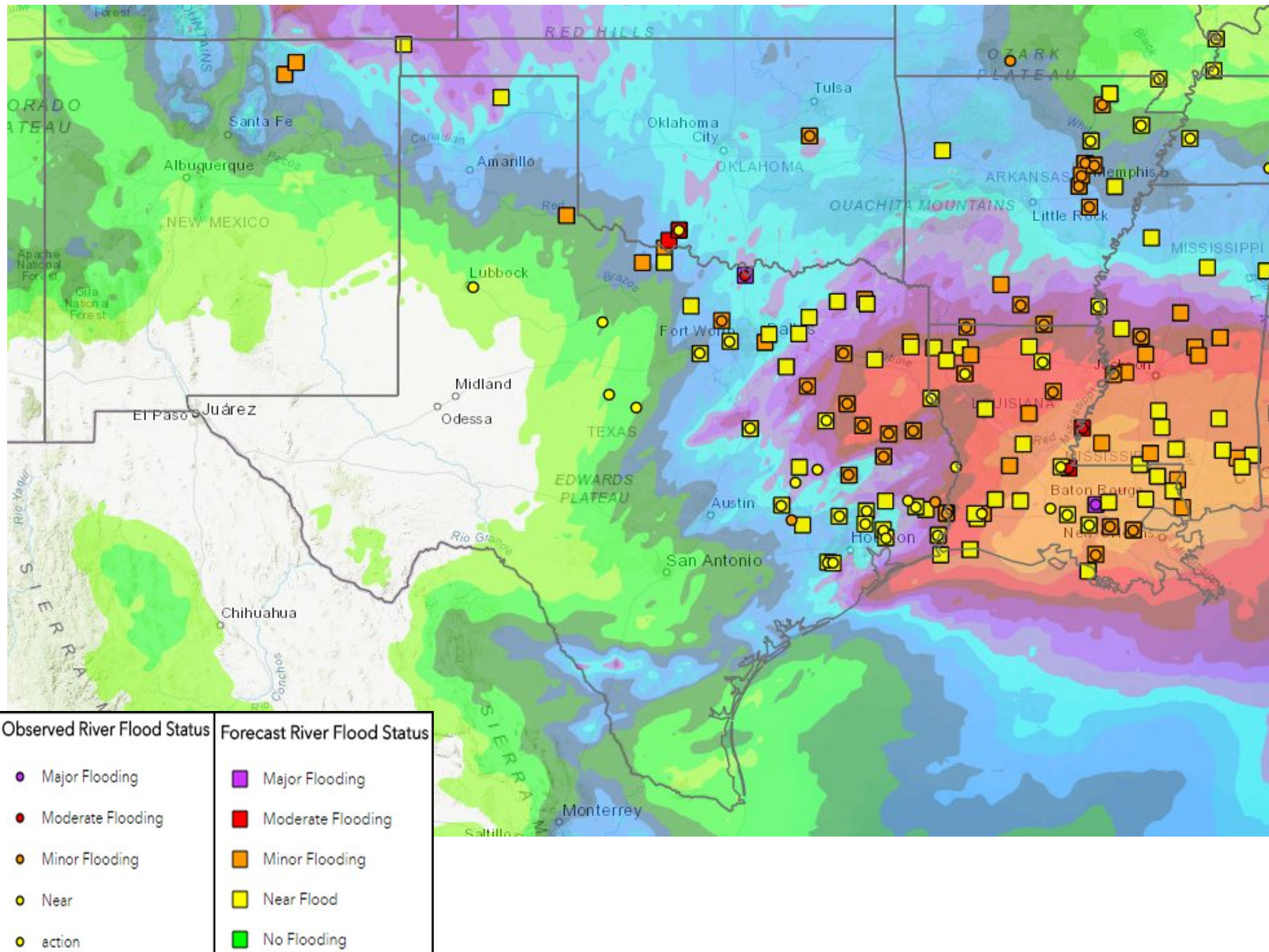
Threat levels are based on FEMA Region 6 criteria. State or local threat level criteria may differ.
For more details on the colors in the threat matrix refer to the last slide in this briefing.

Risk Levels	Little to None	Minor	Moderate	Major	Extreme
-------------	----------------	-------	----------	-------	---------



5-Day Precipitation Forecast & River Flood Status

Note: Even though the image displays 5 days of forecasted rainfall, river forecasts only include 1-2 days of rainfall



Isolated Major Flooding in SE LA through May 7th. Forecast to fall below major flooding by Wednesday.

Minor to moderate river flooding across LA, N/E TX and AR will impact croplands and secondary roads.

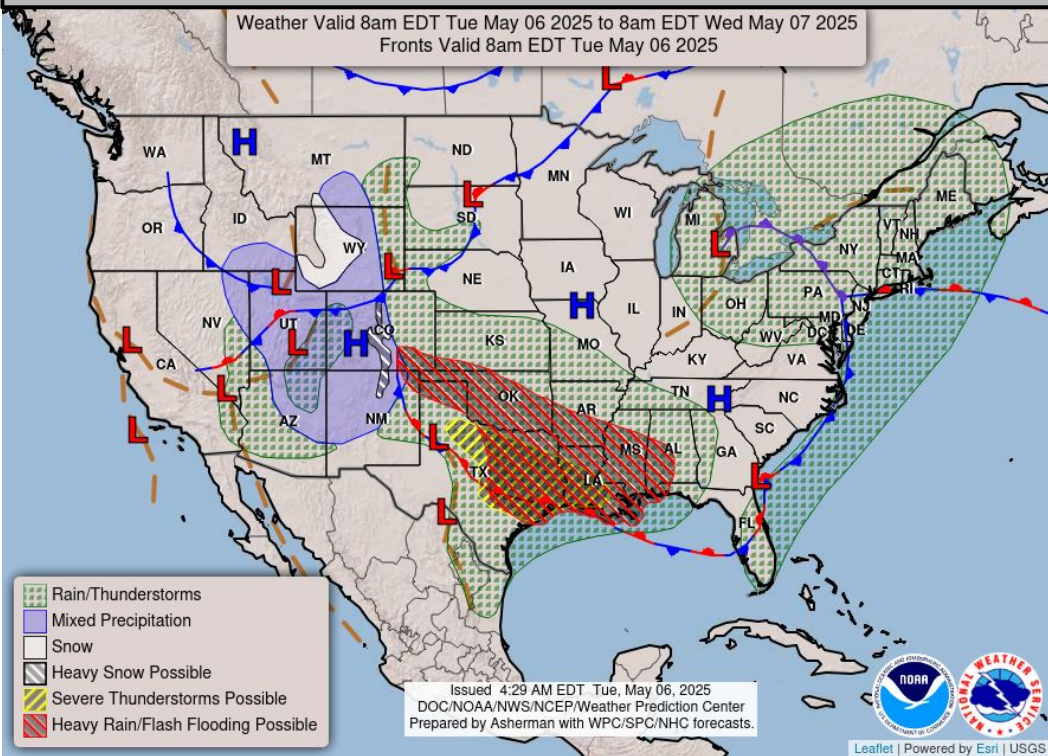
Note: Numerical levels (e.g. level 1 of 4) will not be assigned to riverine flooding due to the varying levels of impacts across flood categories.



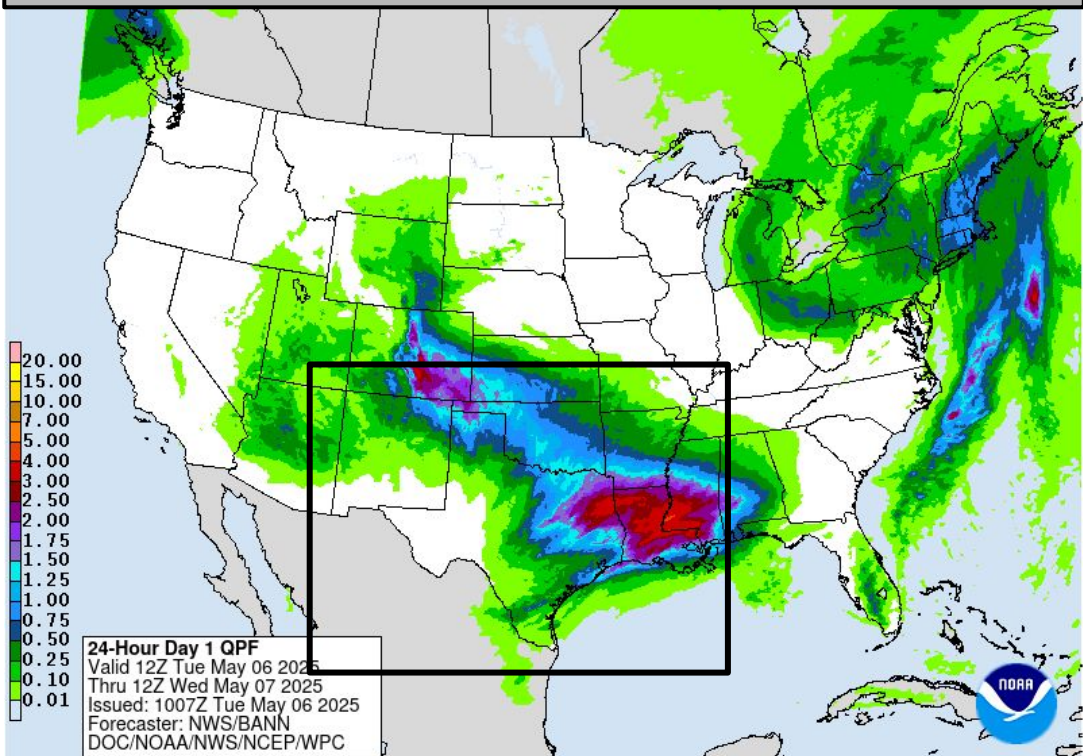


Today's Weather

Forecast Chart

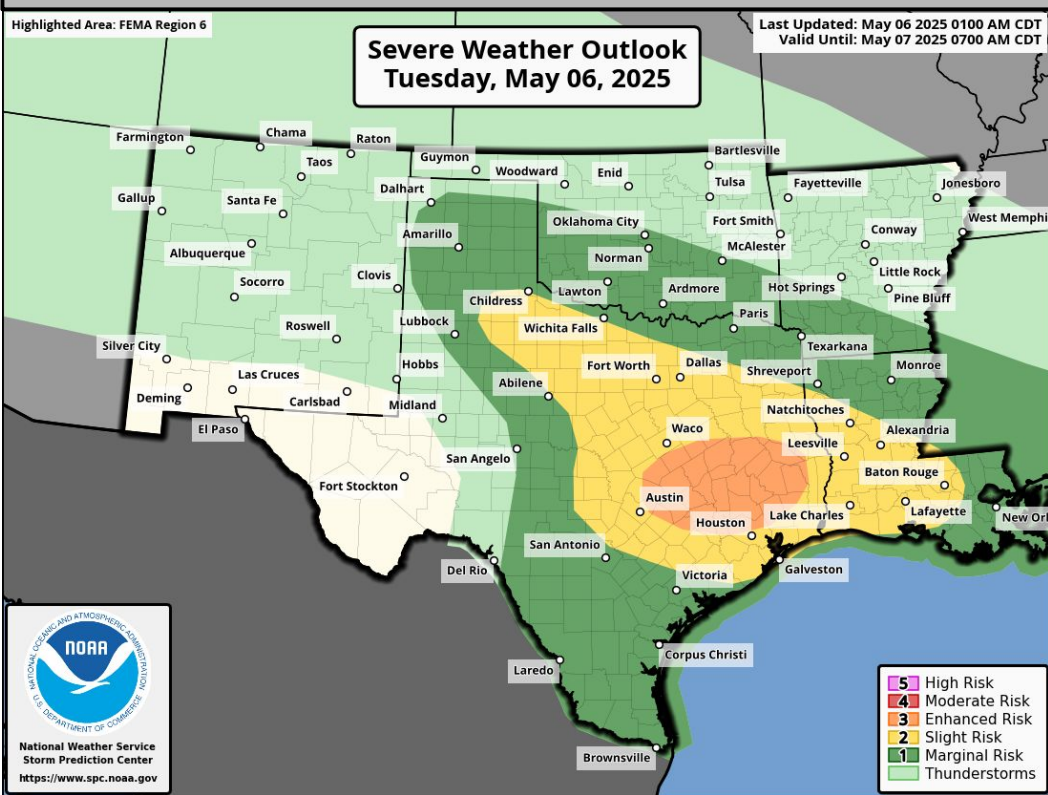


Forecast Rainfall

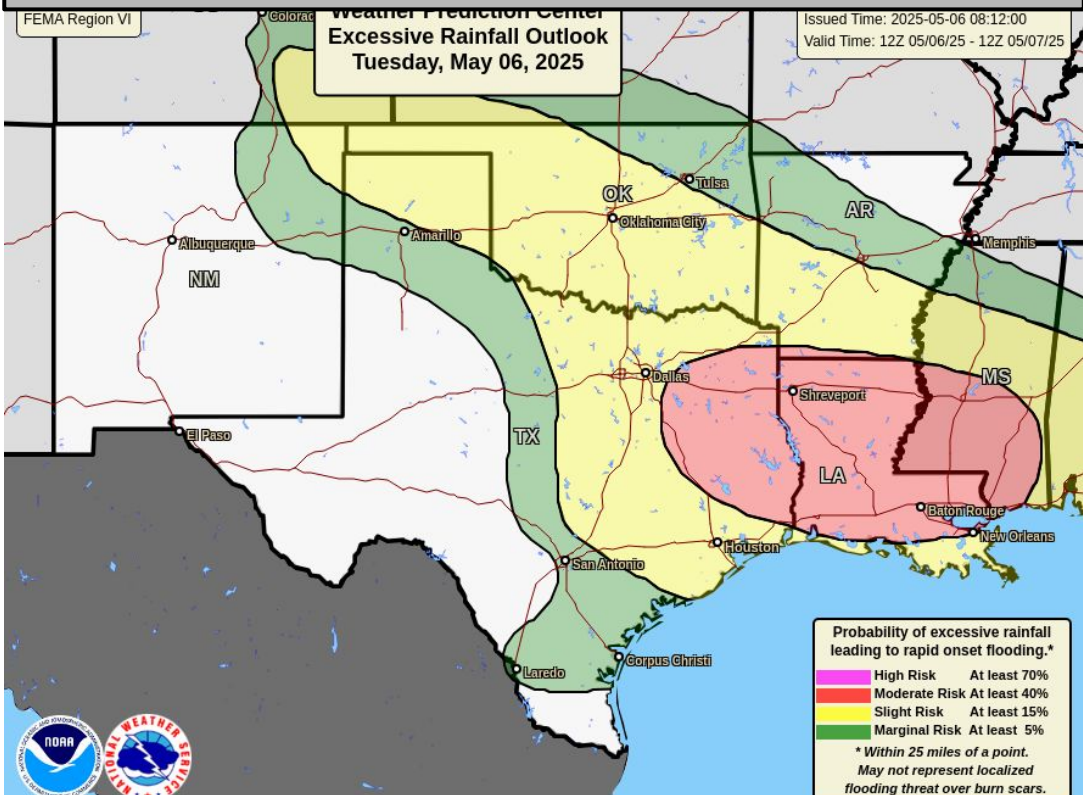


Slight to moderate risk (levels 2-3 of 4) for flooding across OK, N/E TX, S AR, LA. Increasing confidence in an area in S LA receiving 13-16 inches of rainfall in the next 48 hrs.

Severe Weather Outlook



Excessive Rainfall Outlook

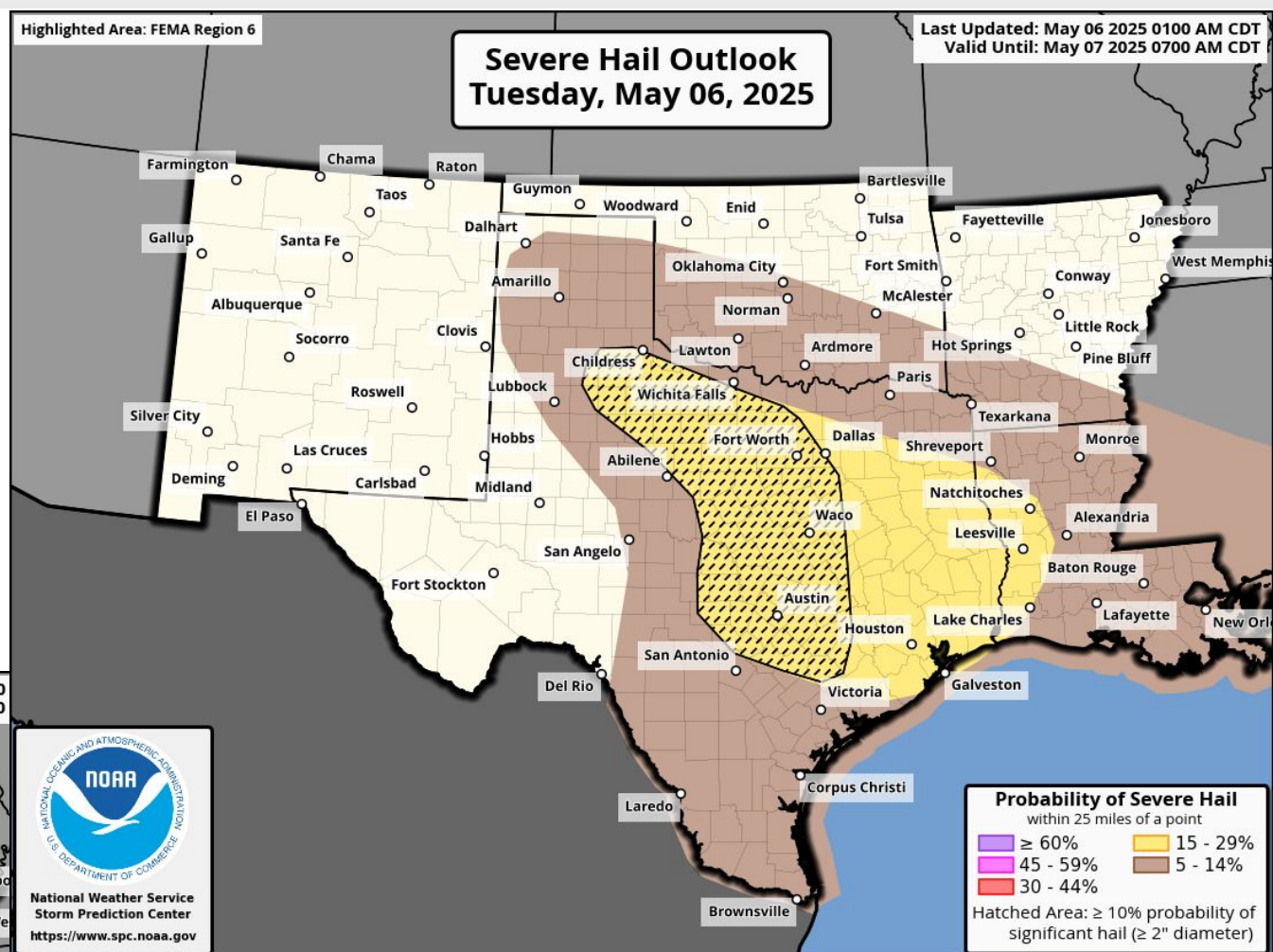
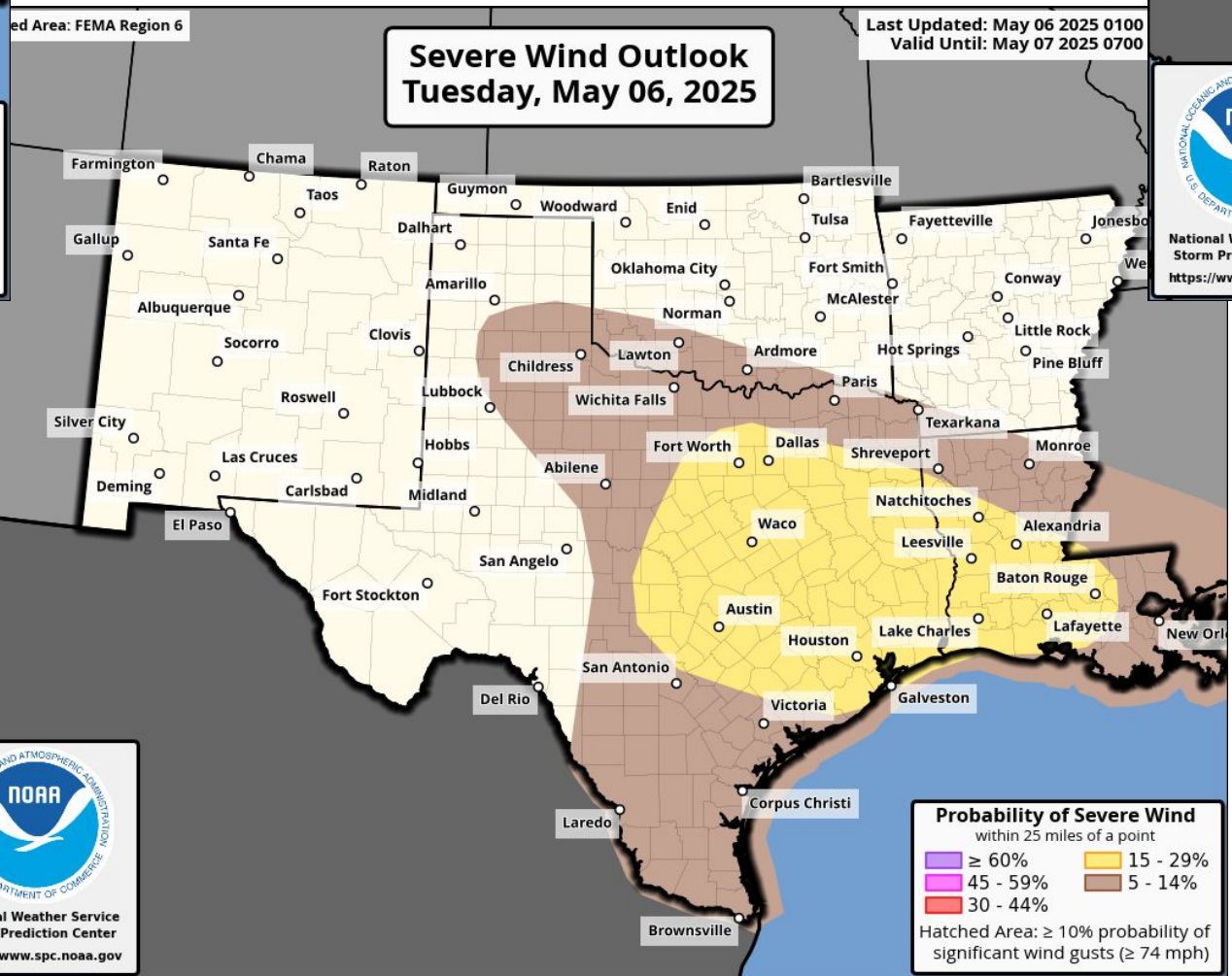
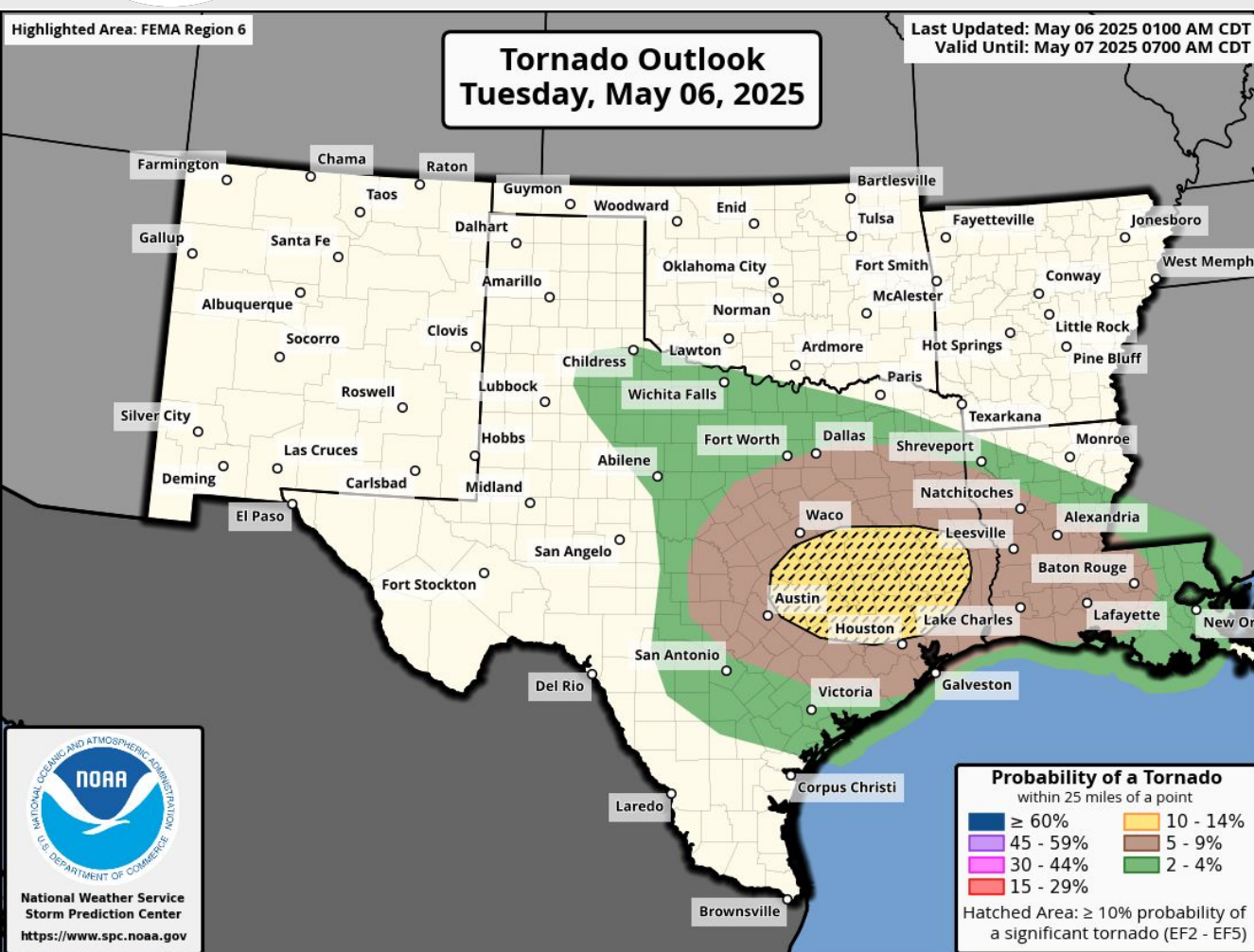


Slight to enhanced risk (levels 2-3 of 5) for severe storms over N/NW/C/E/SE TX, LA. Tornado timing: 10am - 10pm.





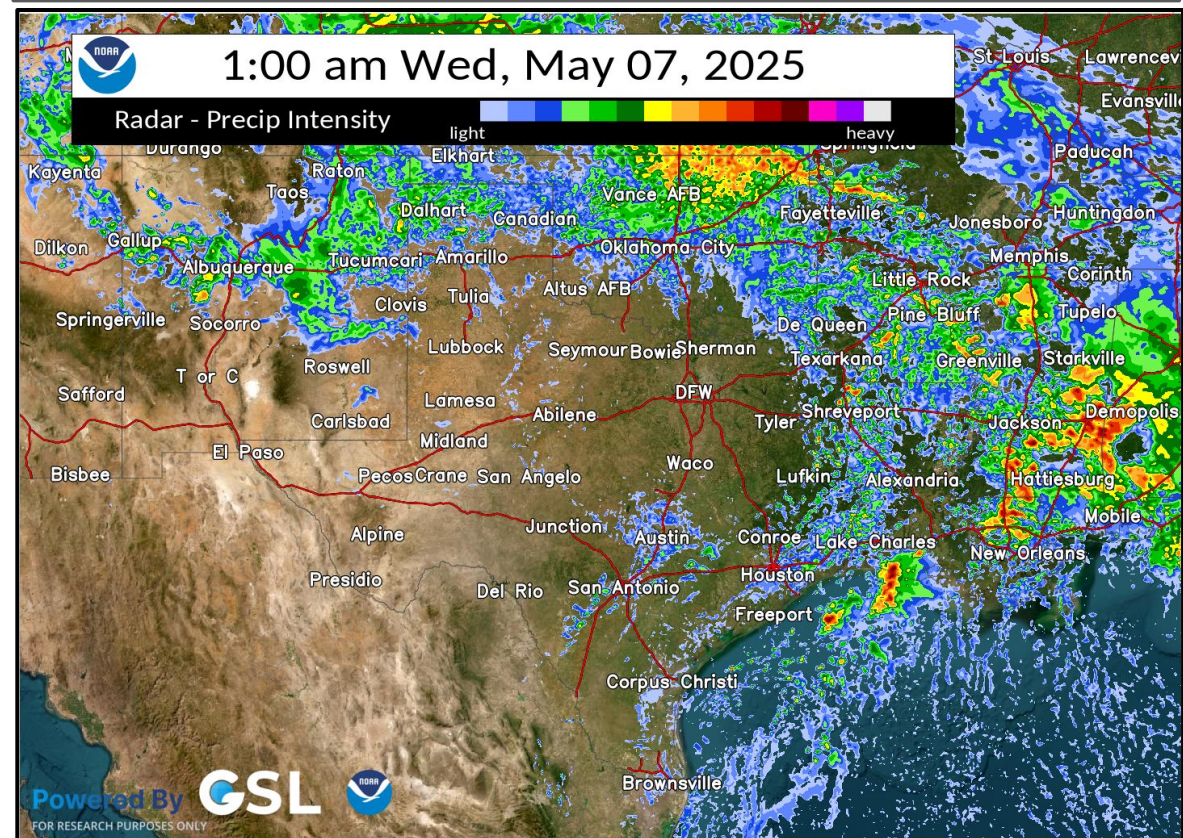
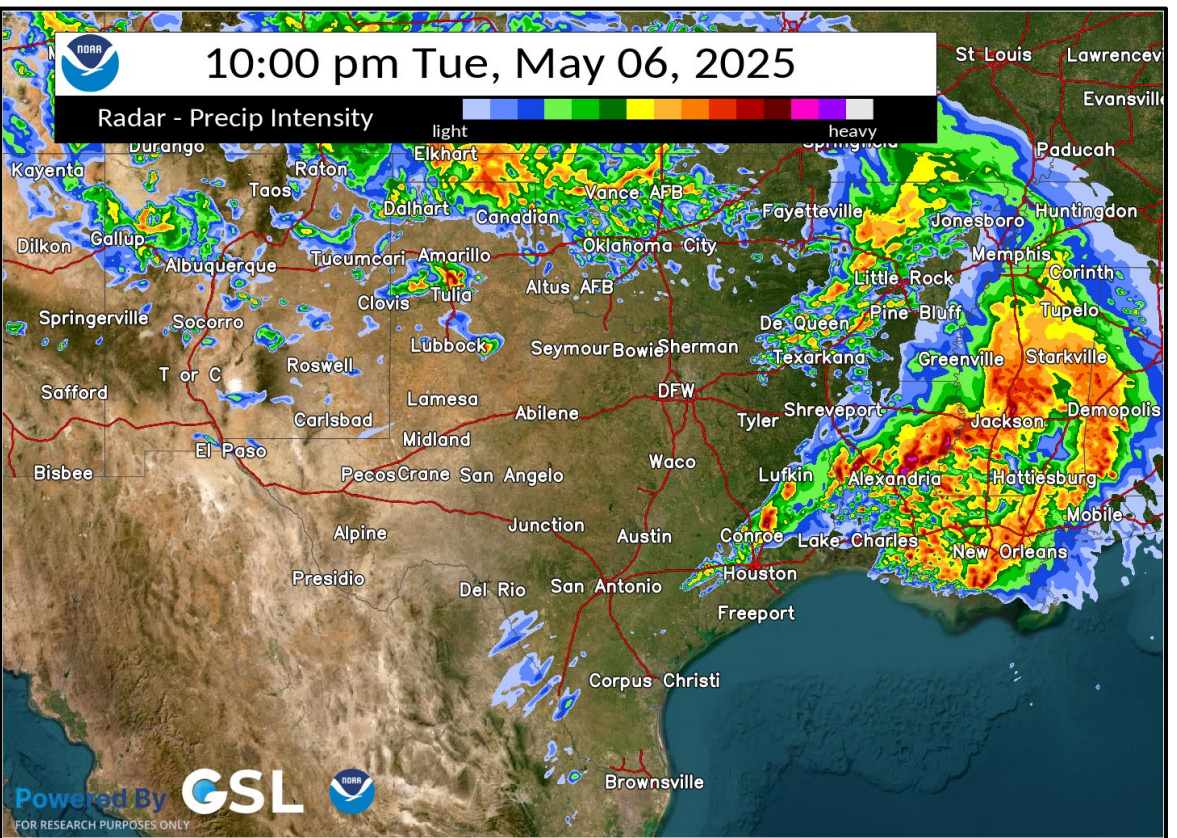
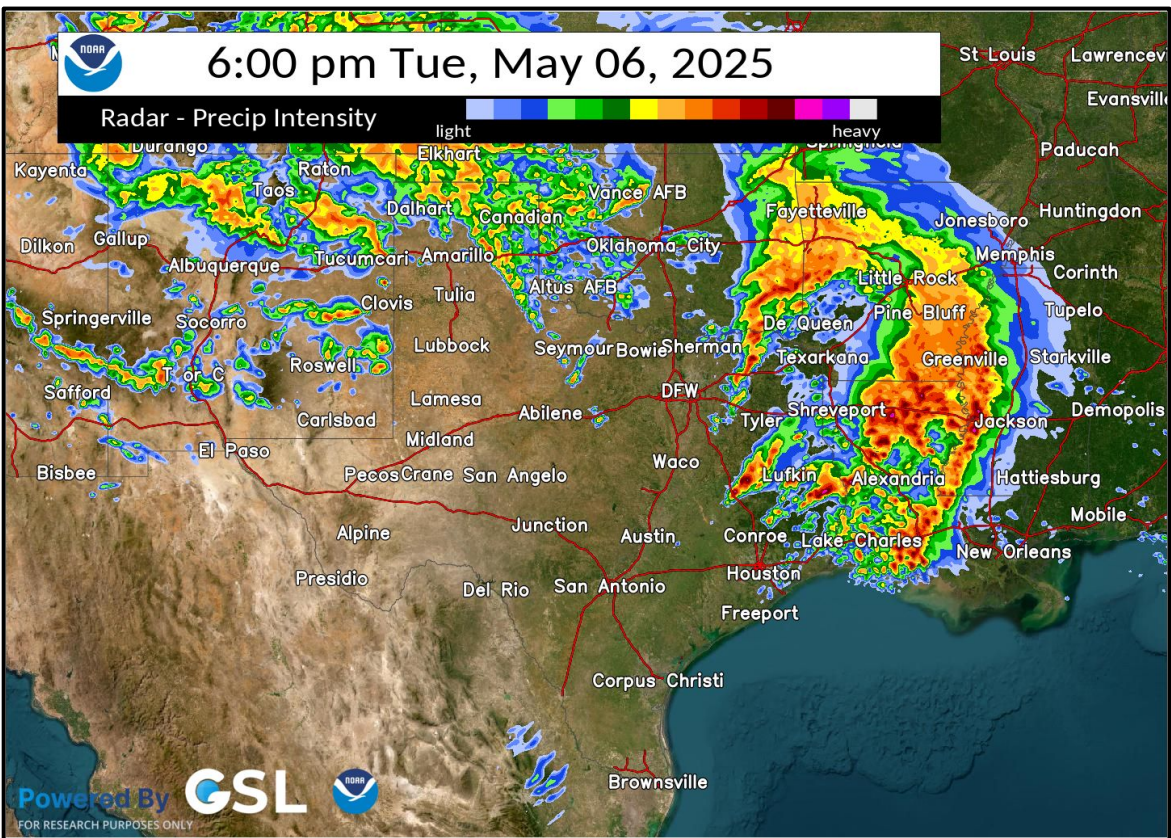
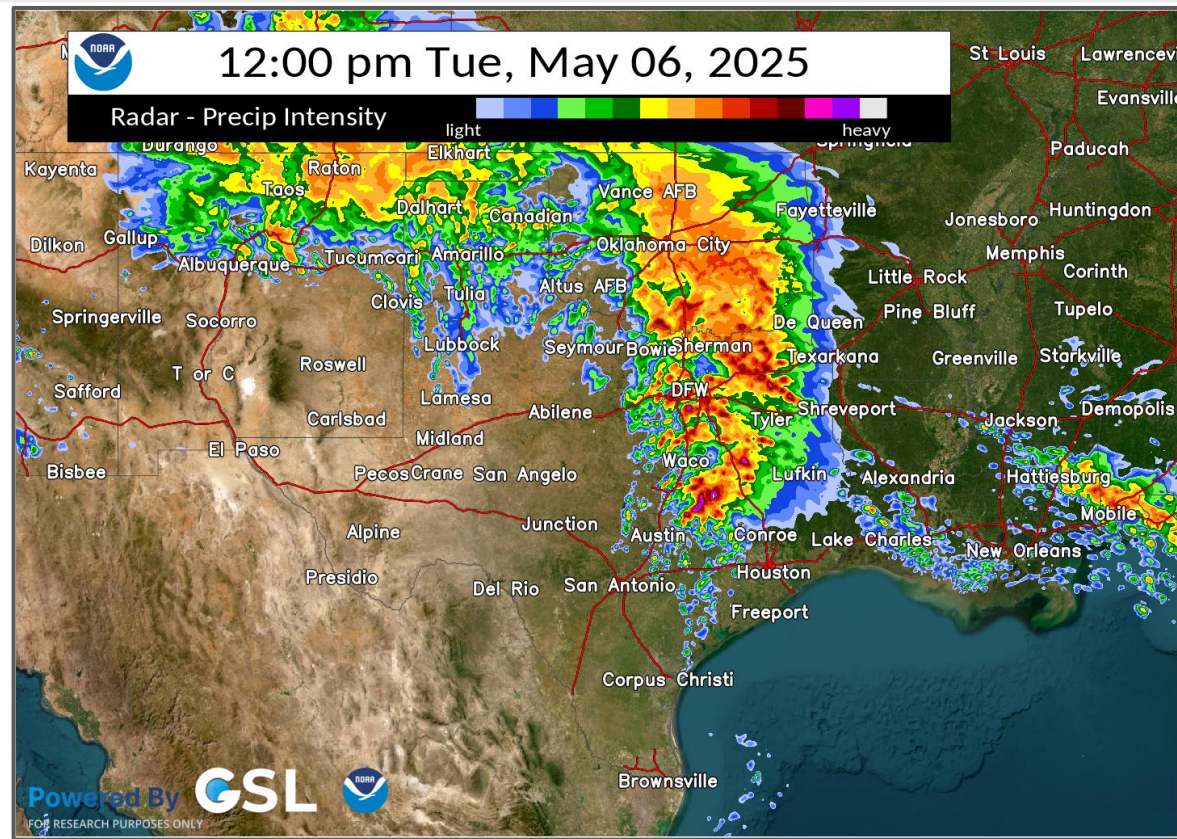
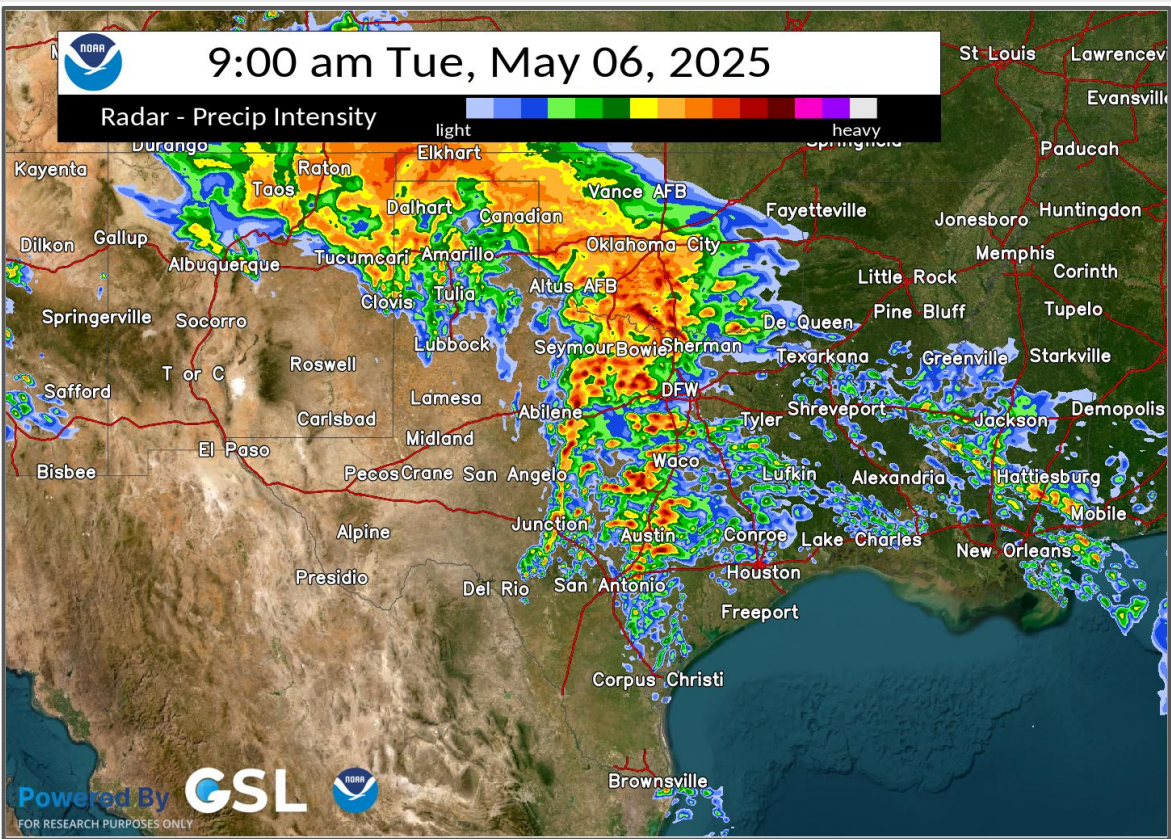
Today's Tornado & Severe Wind / Hail Probabilities





Potential Evolution of Storms Today

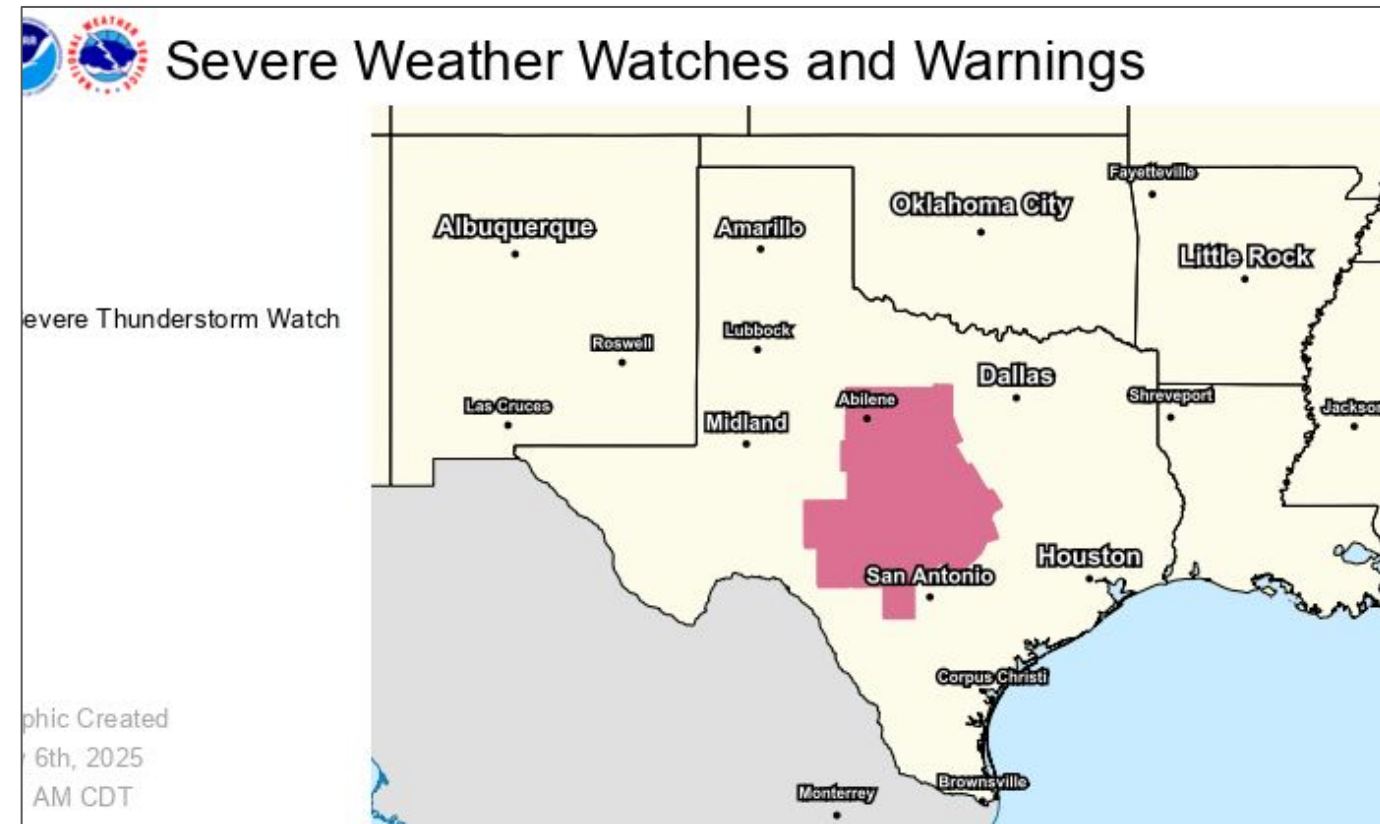
NOTE: This is just one model's prediction of the storms, actual timing and locations may be different





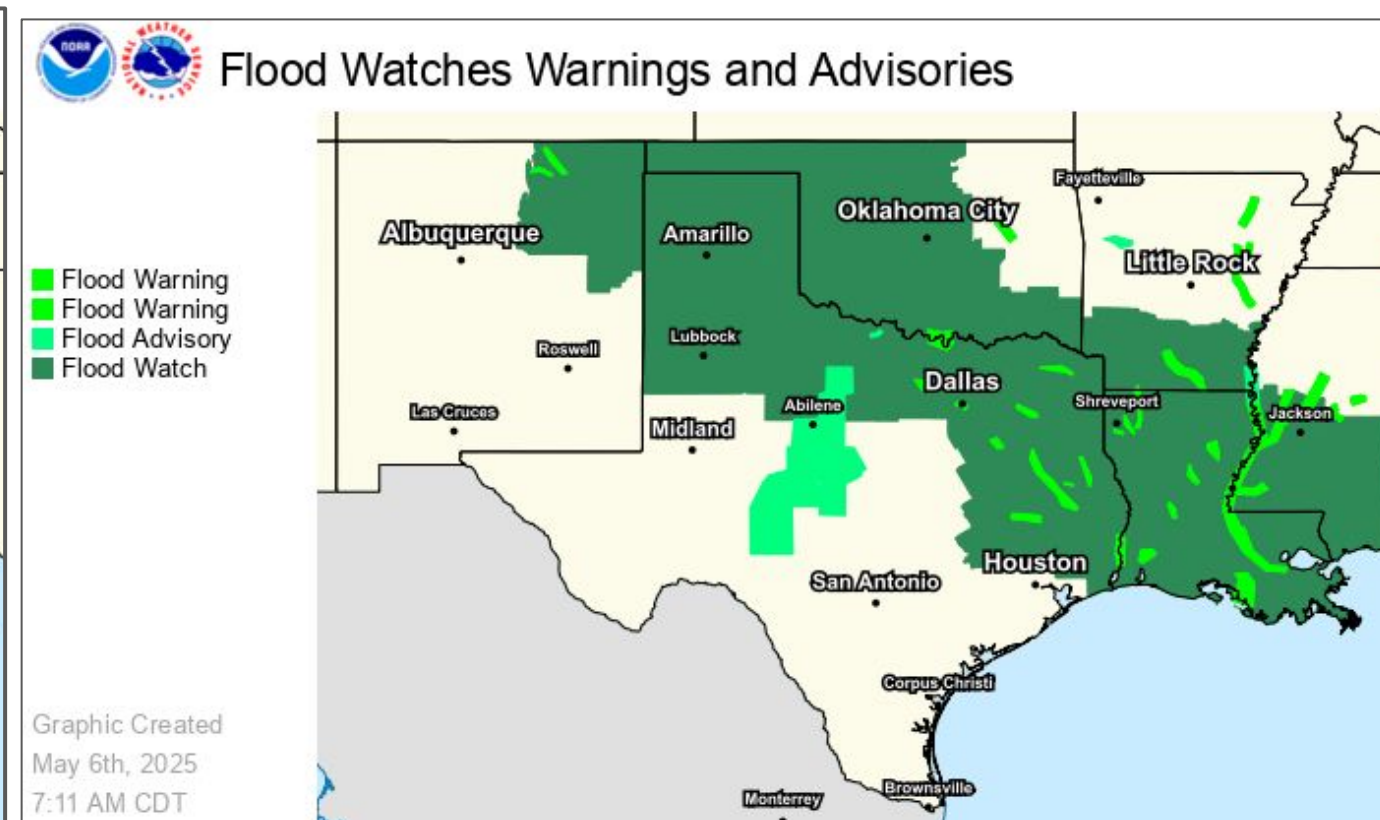
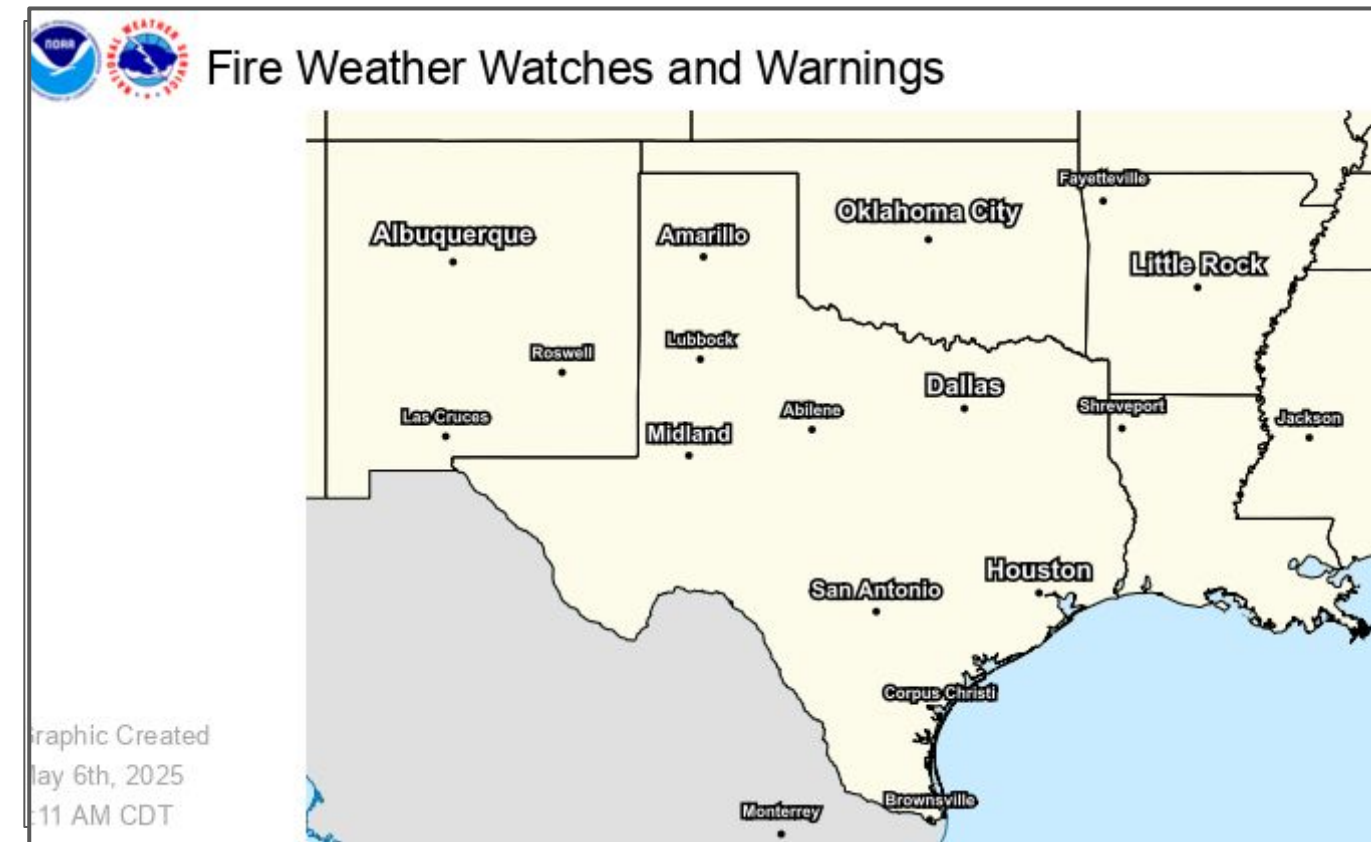
Watches, Warnings, and Advisories

Wind, Severe, Heat, and Flood Hazards



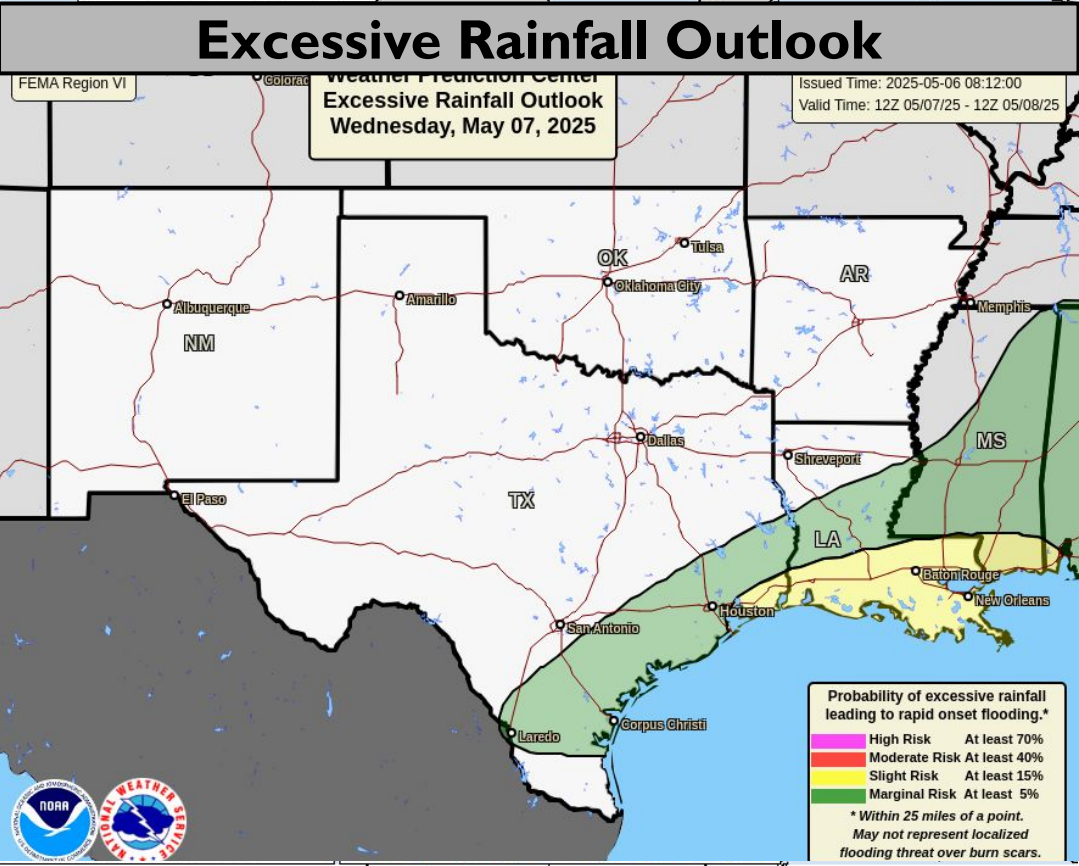
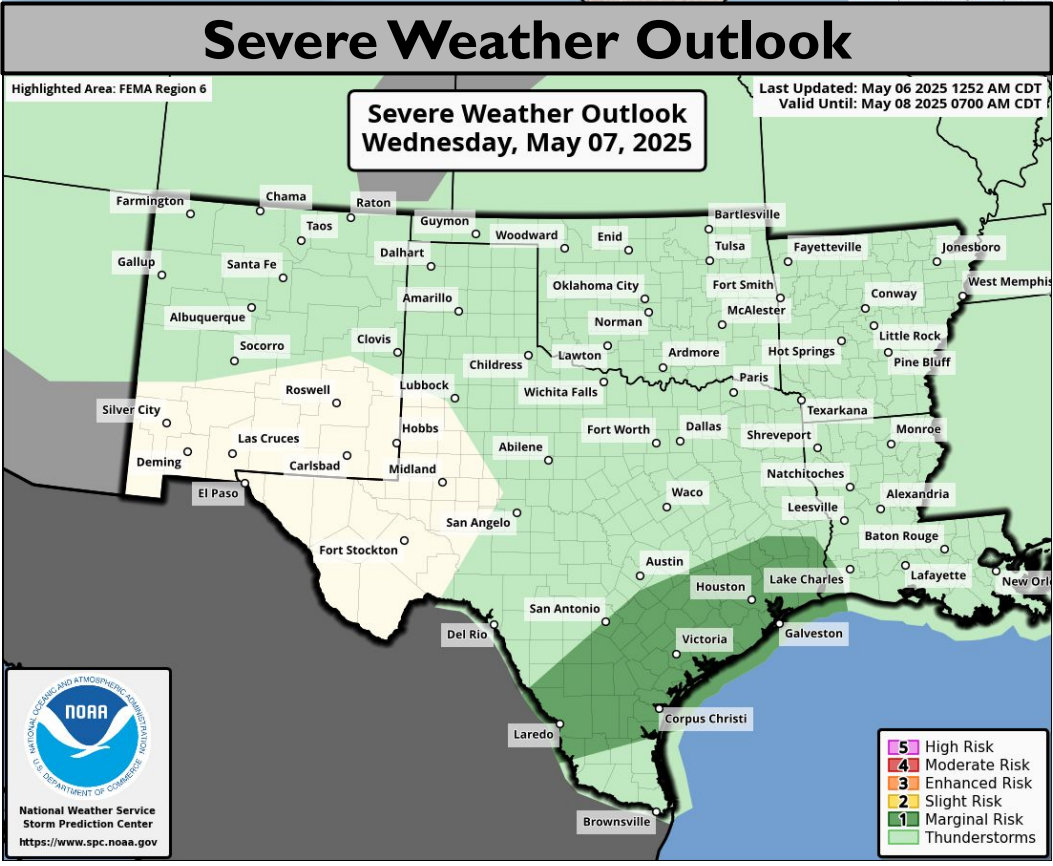
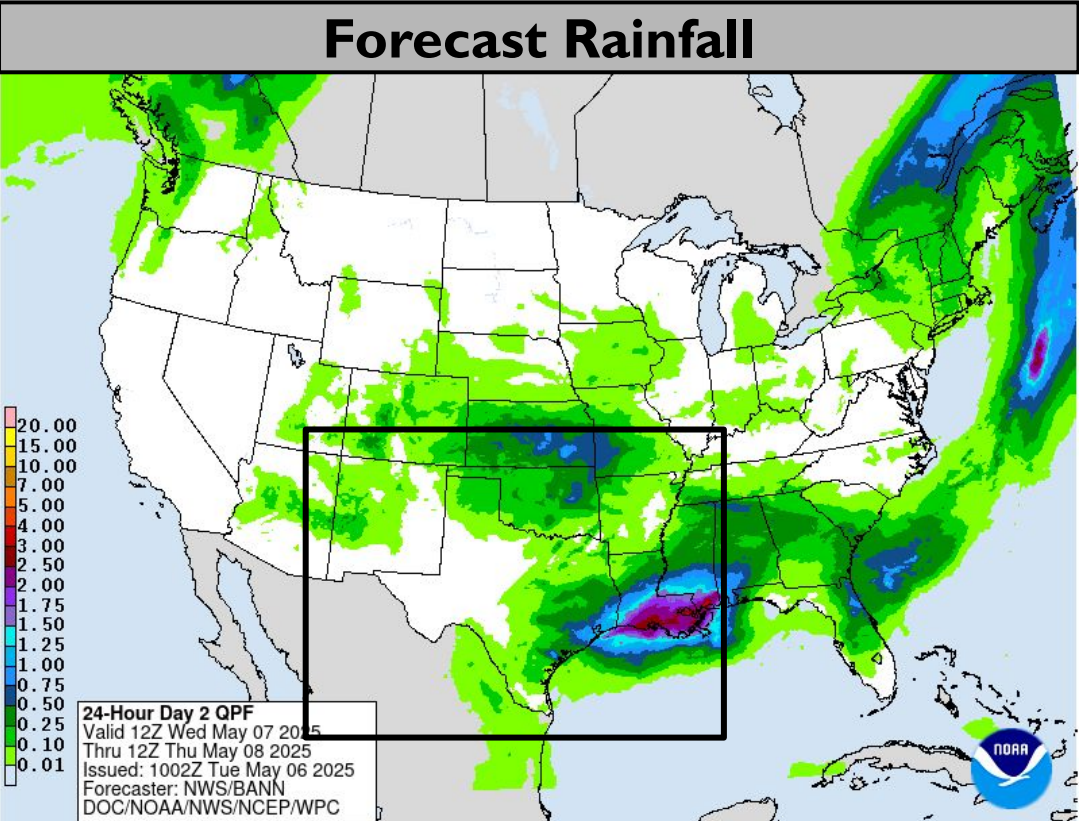
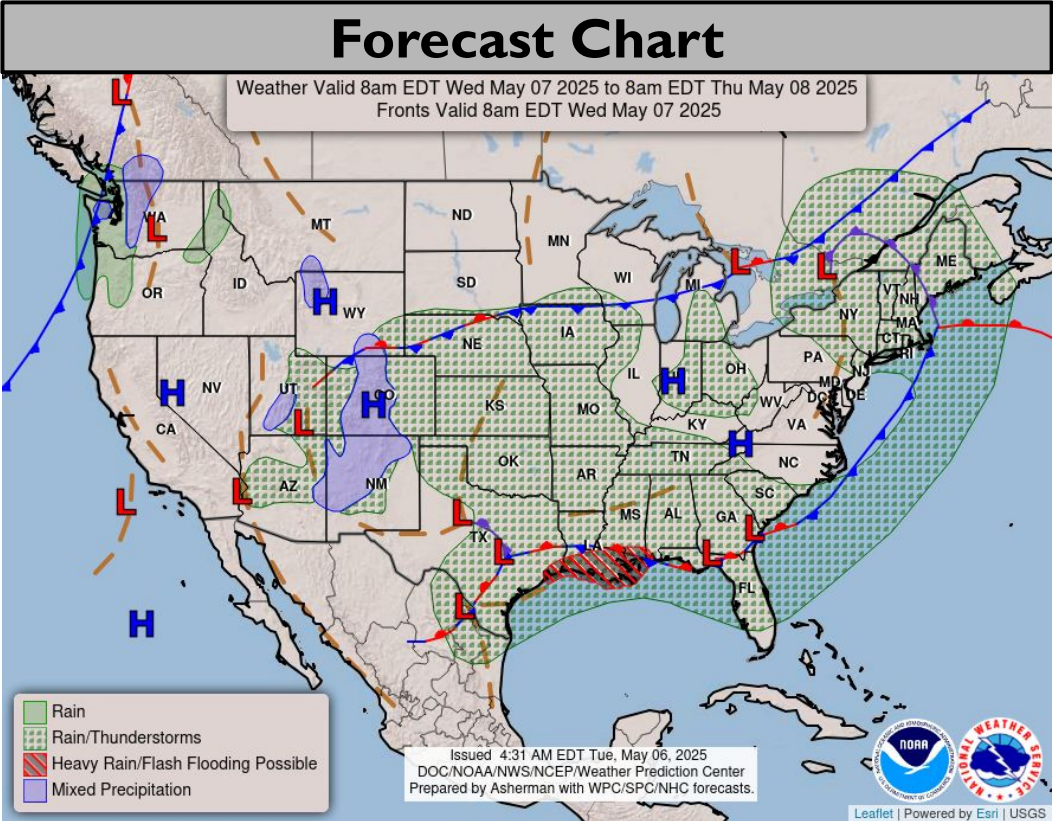
**Severe Thunderstorm
Watch until 10am in C
TX.**

**Flood watch from E NM
into OK, S AR, TX and LA
through Thursday.**





Tomorrow's Weather



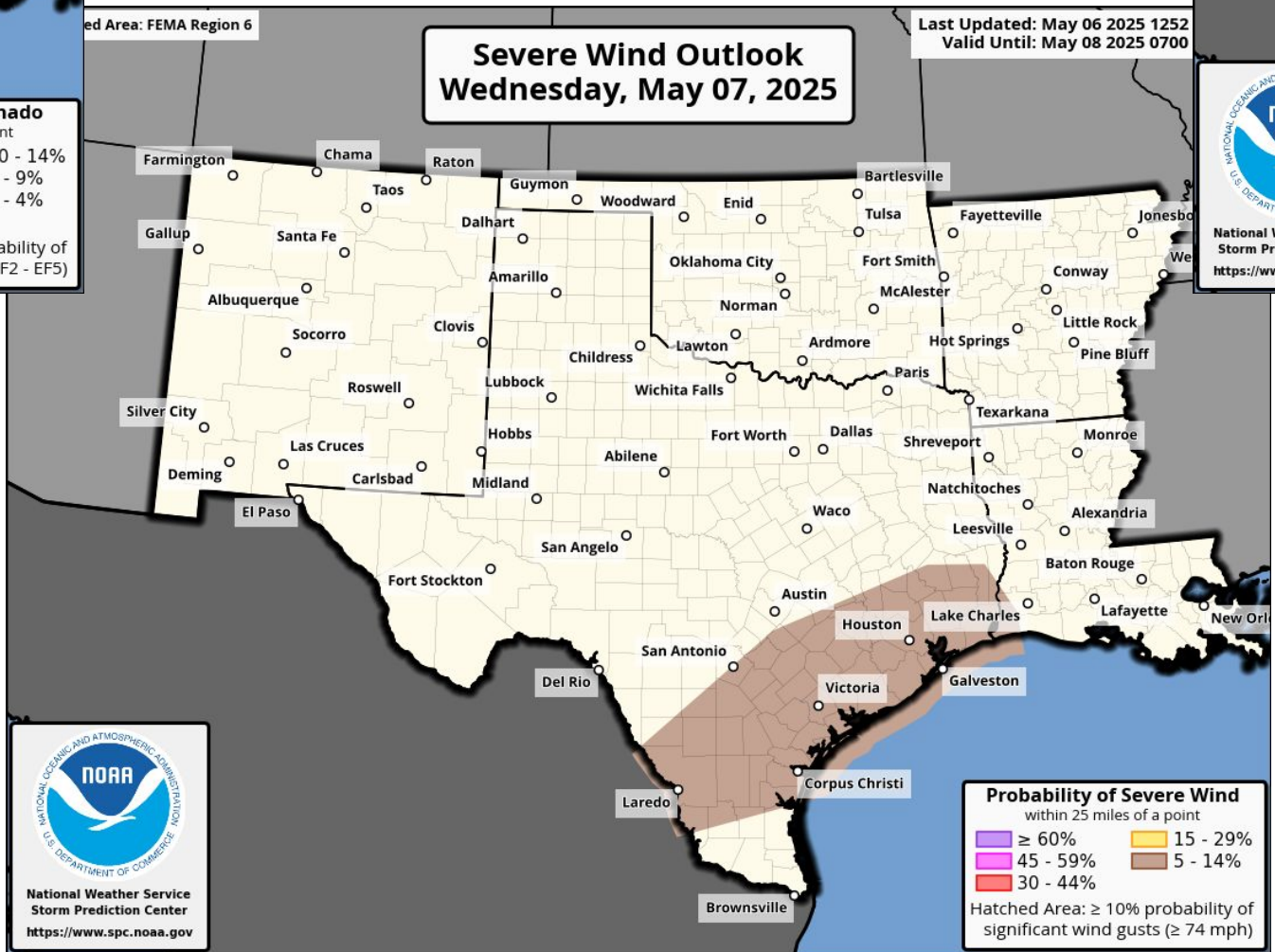
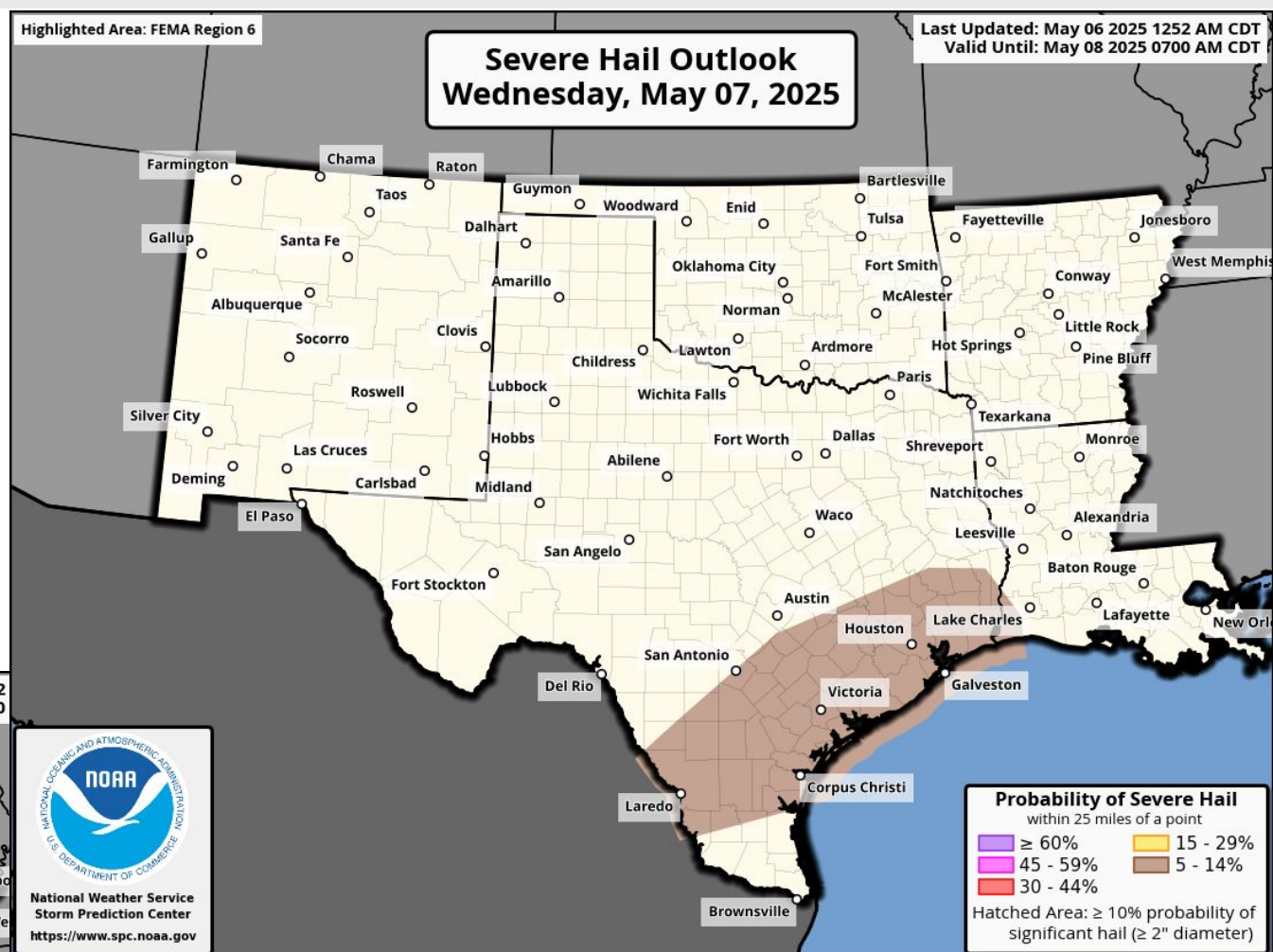
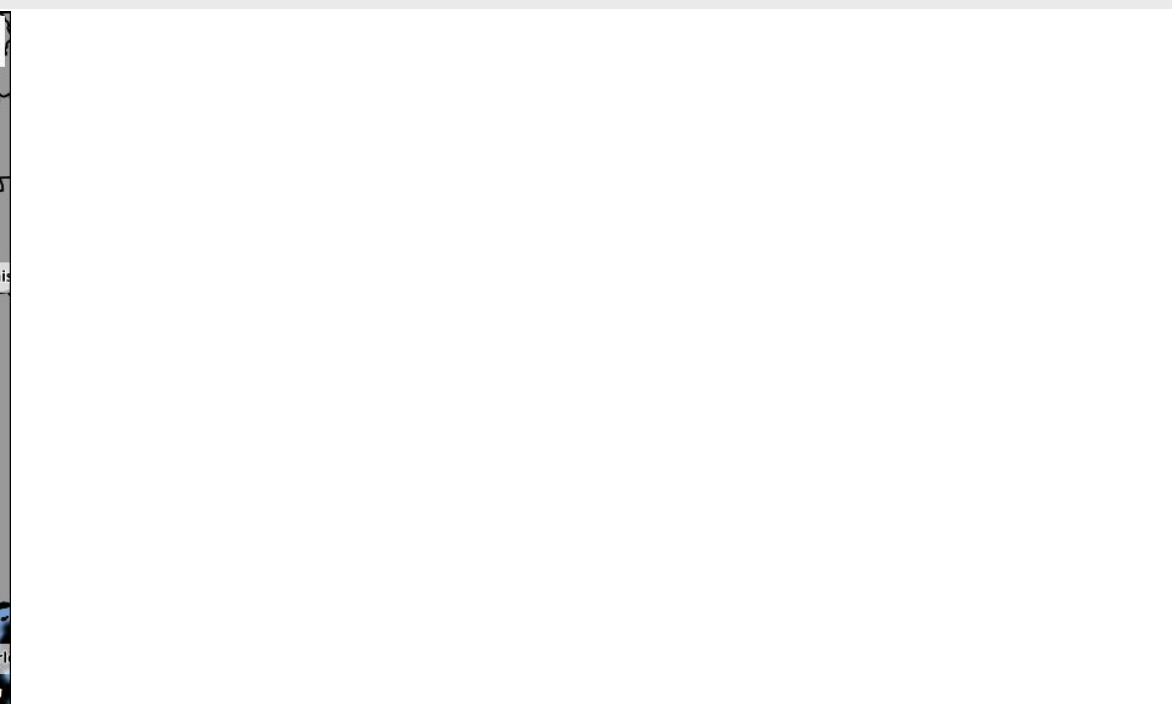
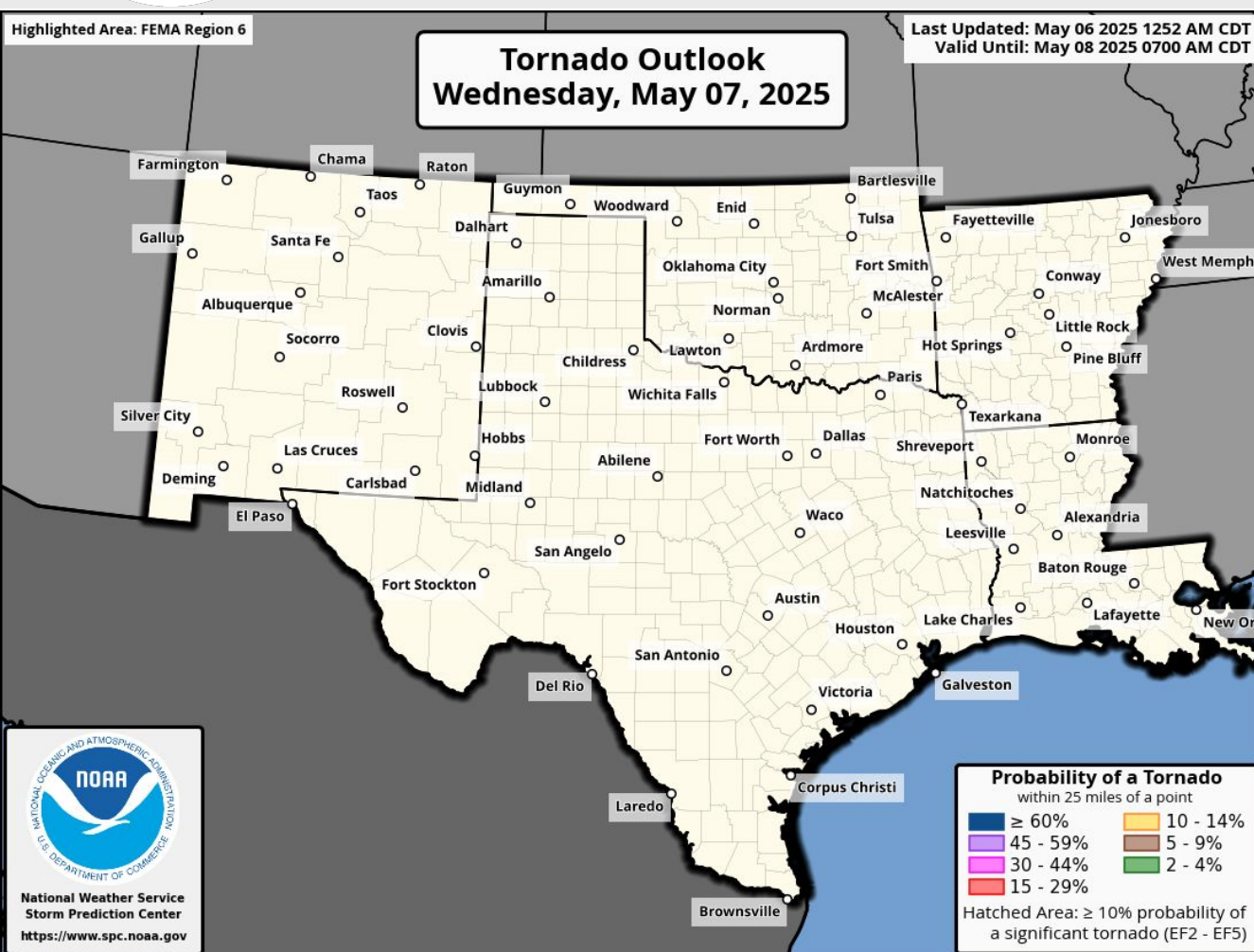
Slight risk (level 2 of 4) for flash flooding across SE TX, S LA.

Marginal risk (level 1 of 5) for severe storms in SE/S TX, SW LA.





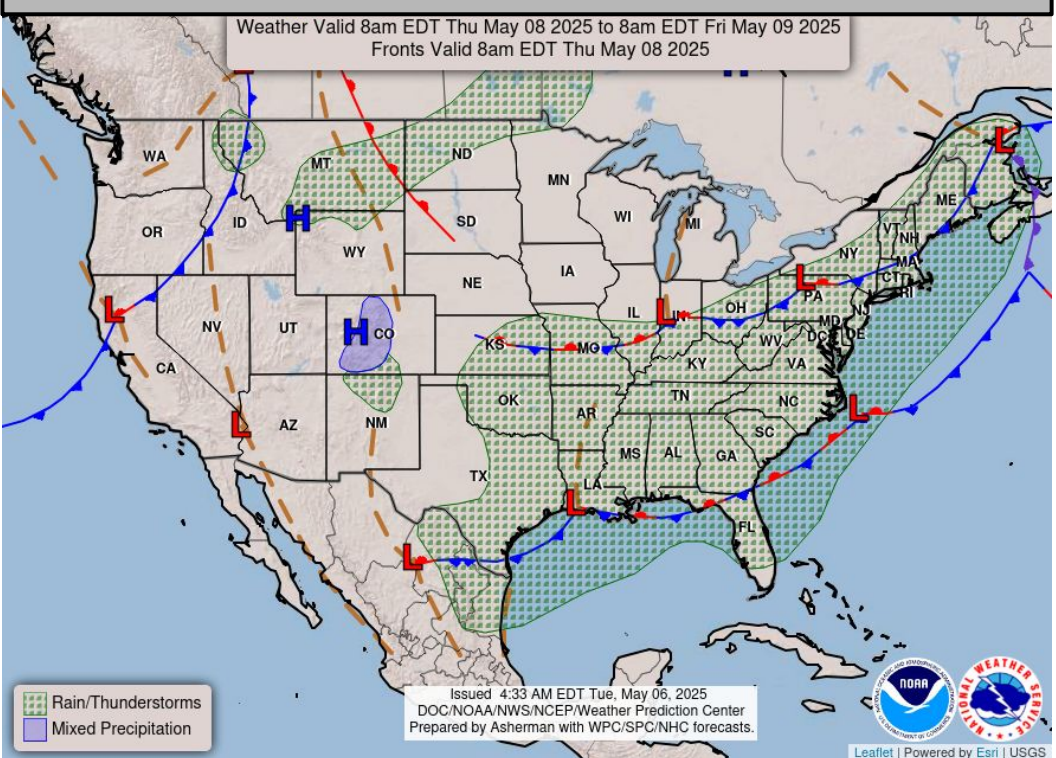
Tomorrow's Tornado & Severe Wind / Hail Probabilities



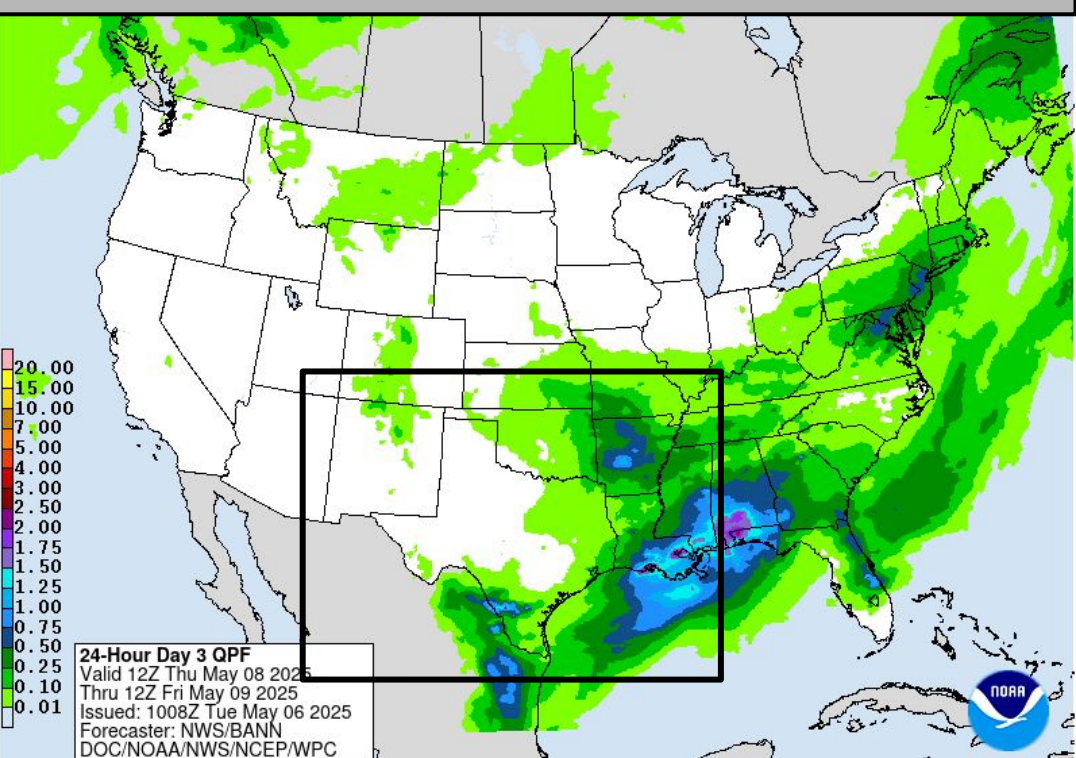


Thursday's Weather

Forecast Chart

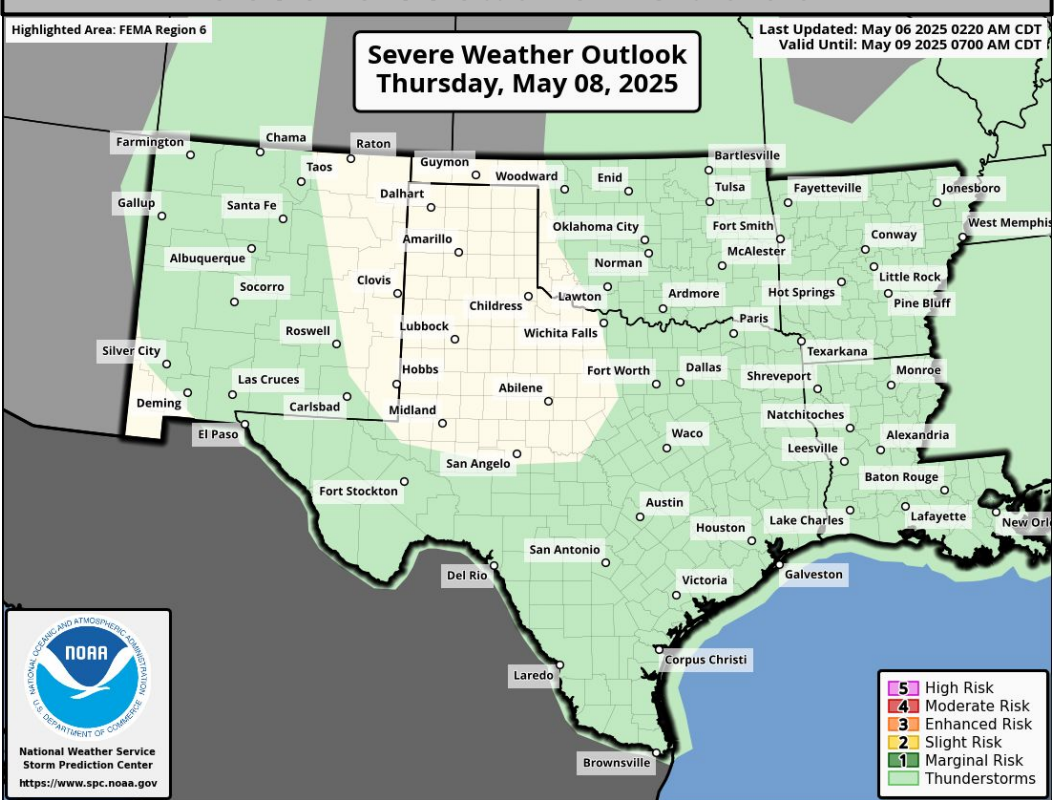


Forecast Rainfall

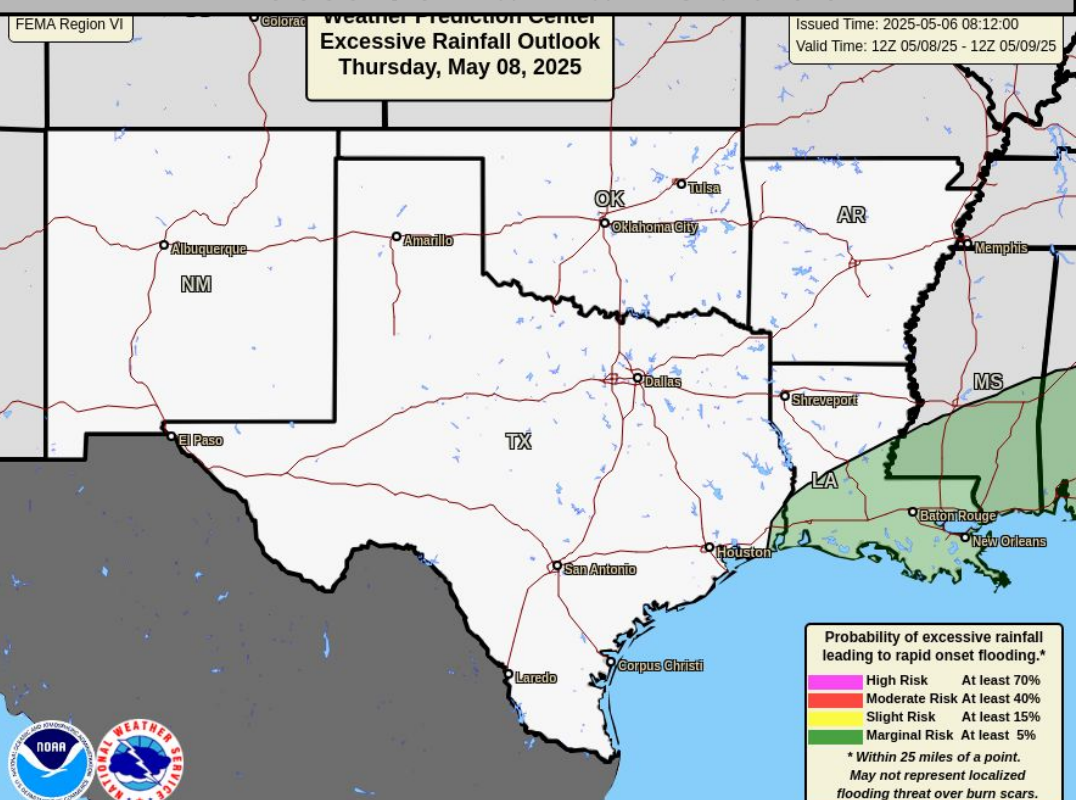


Marginal risk (level 1 of 4) for flash flooding in S LA.

Severe Weather Outlook



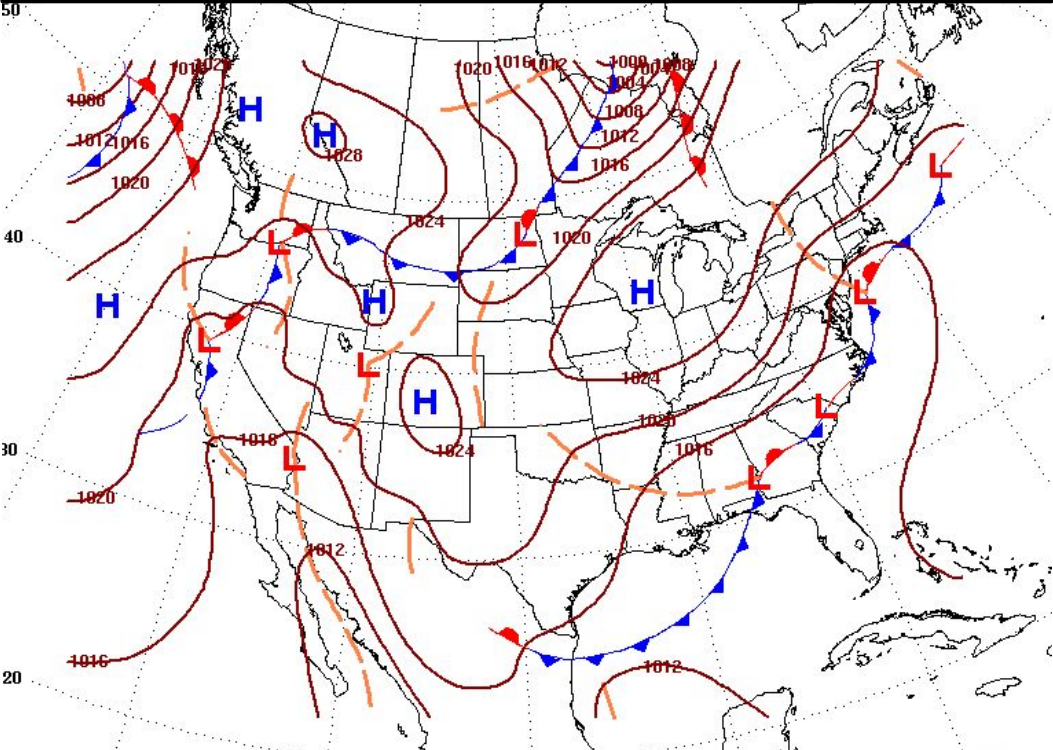
Excessive Rainfall Outlook



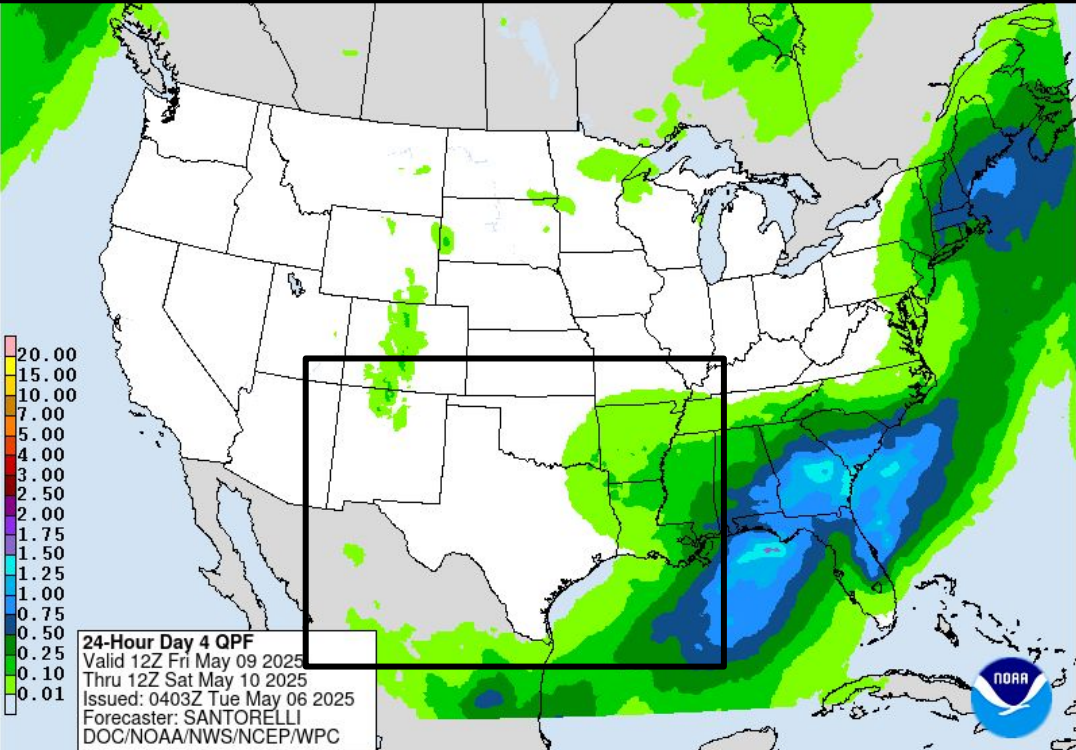


Friday's Weather

Forecast Chart

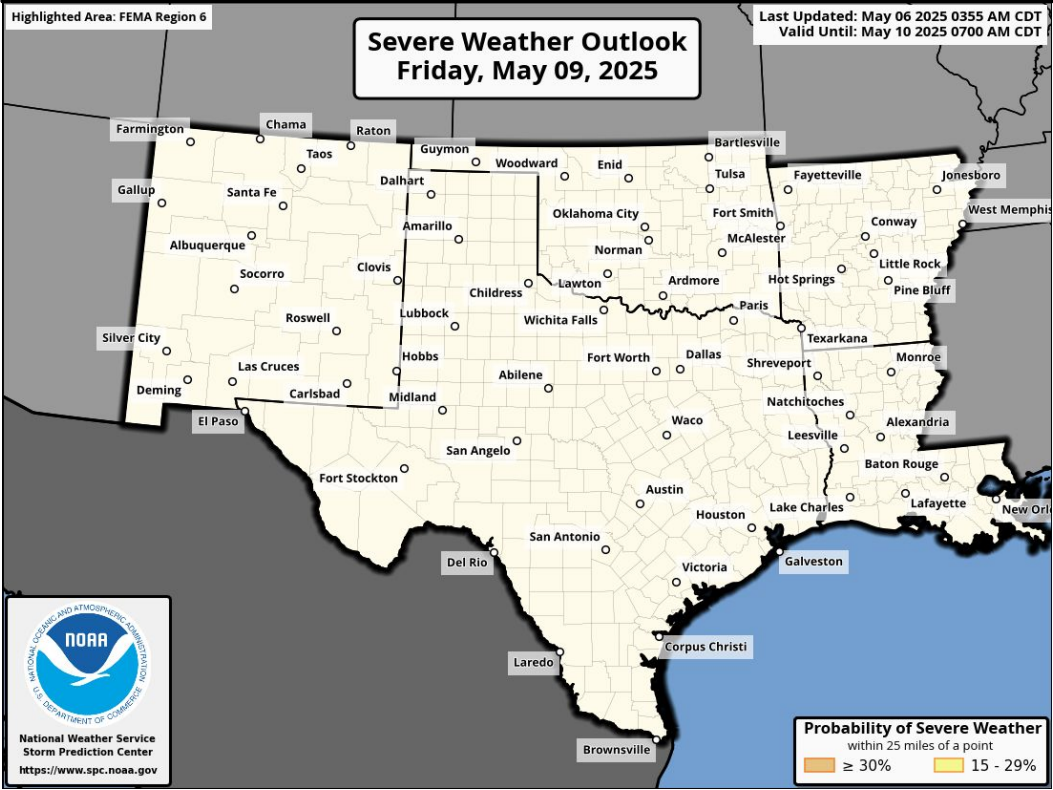


Forecast Rainfall

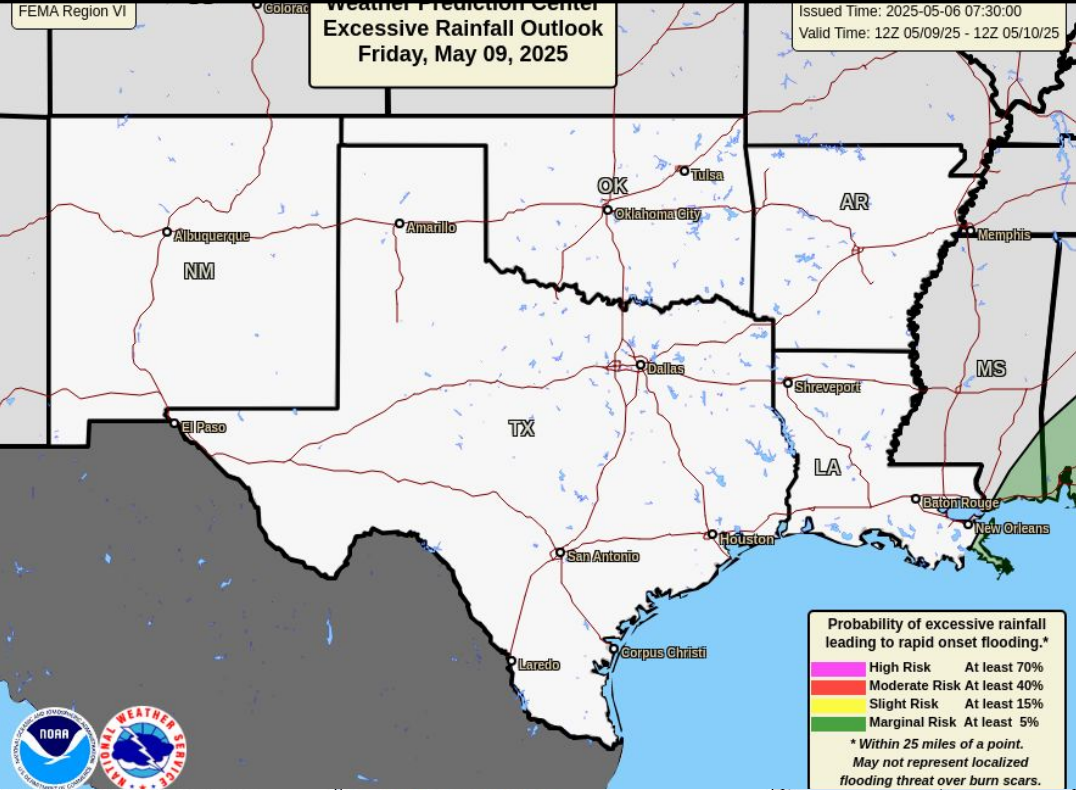


Marginal risk (level I of 4) for flash flooding in far SE LA.

Severe Weather Outlook



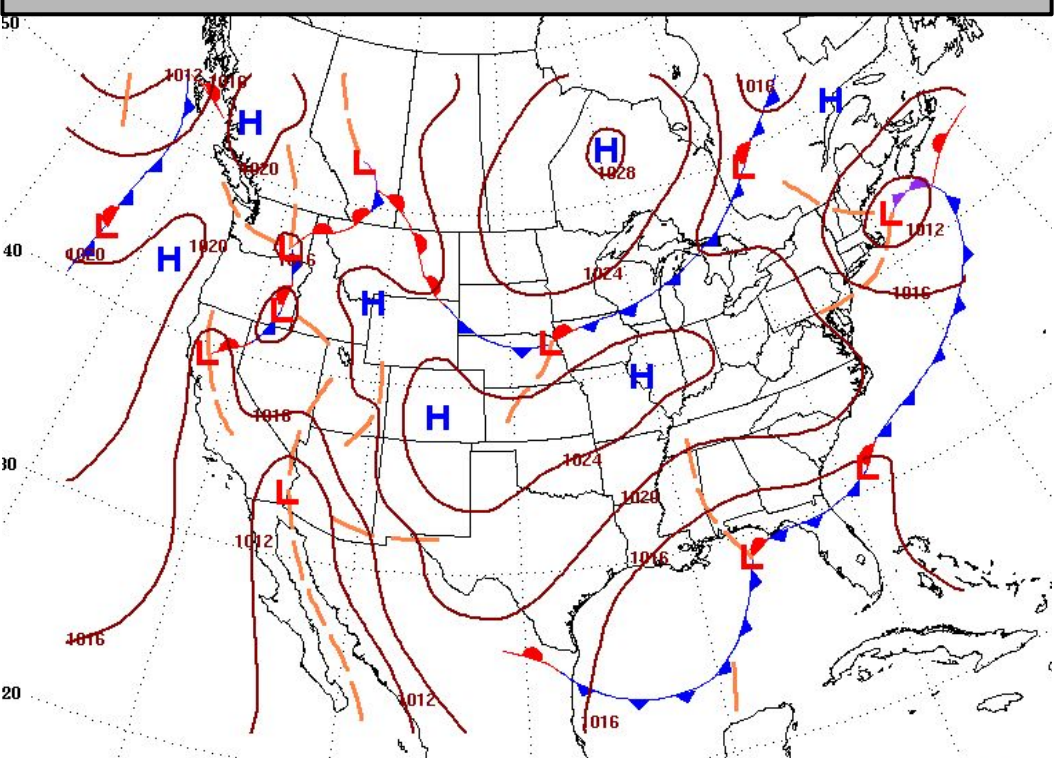
Excessive Rainfall Outlook



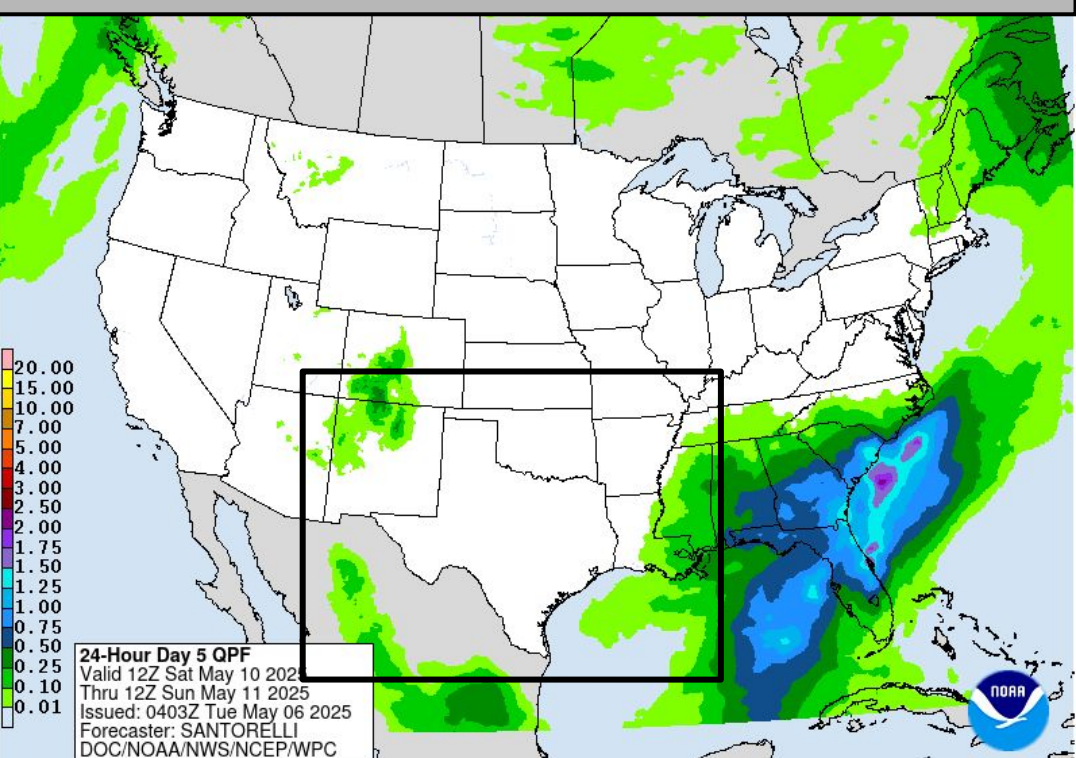


Saturday's Weather

Forecast Chart

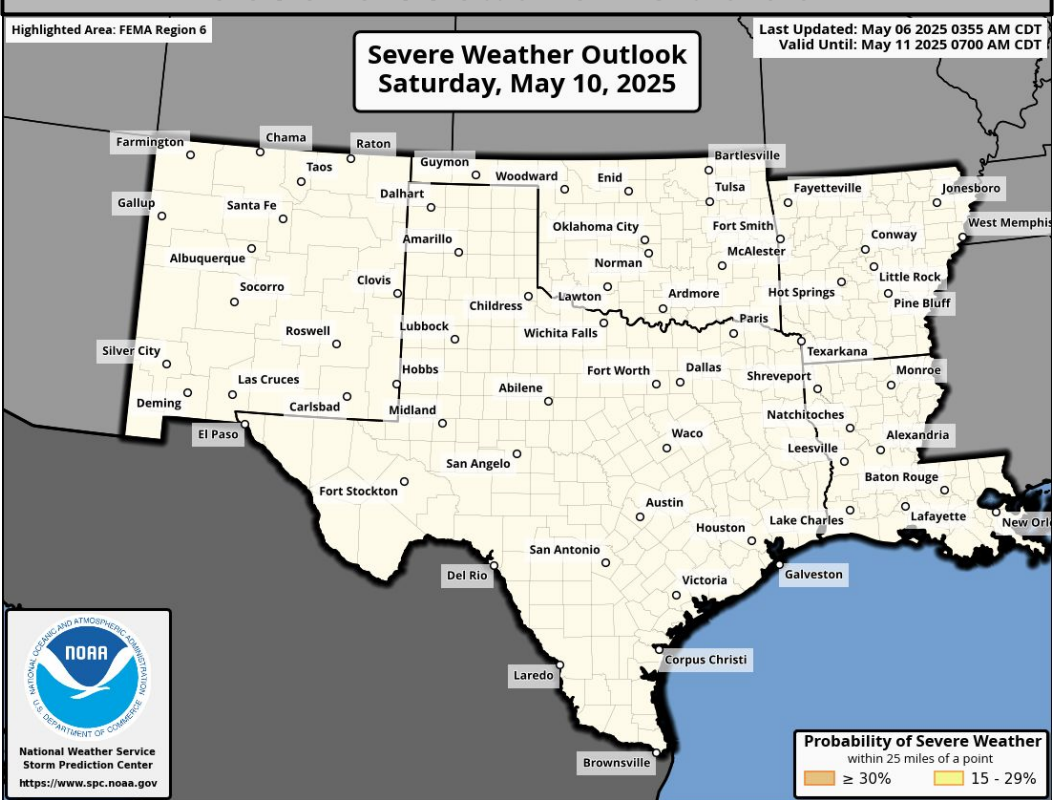


Forecast Rainfall

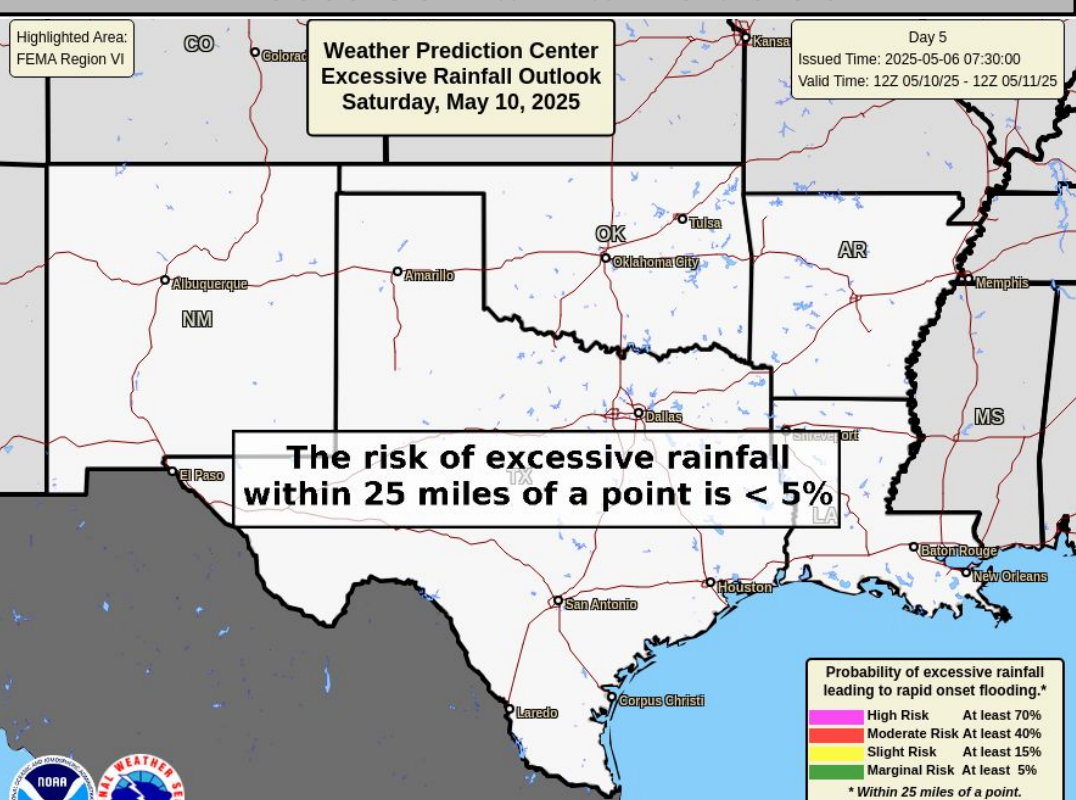


No significant weather expected.

Severe Weather Outlook



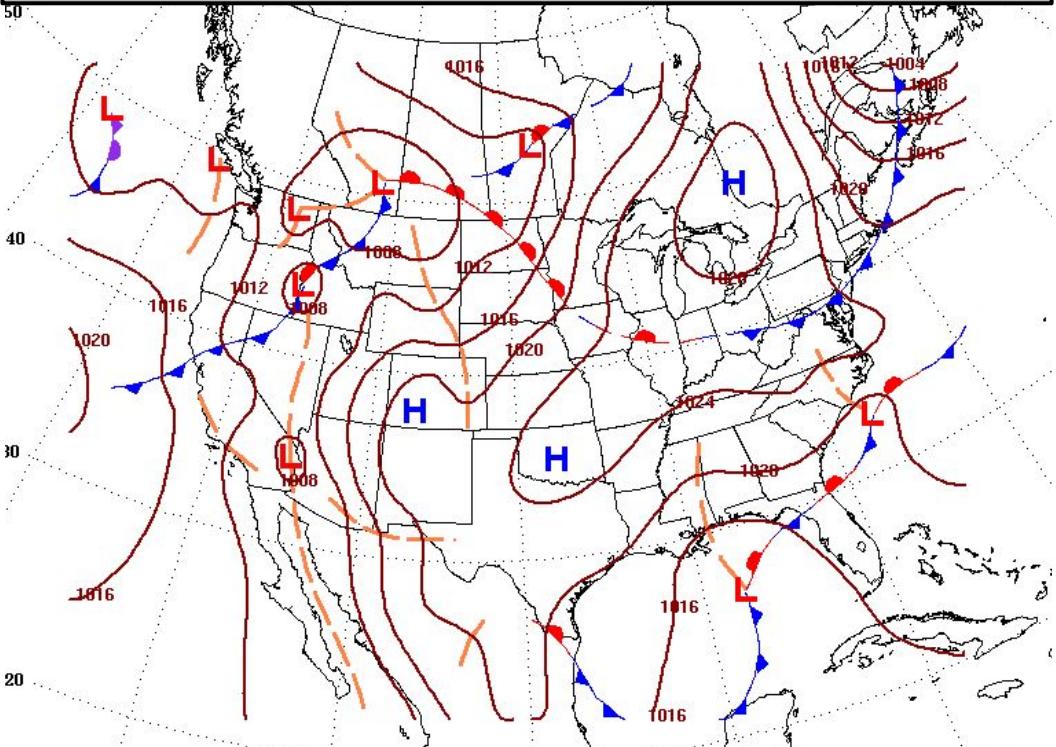
Excessive Rainfall Outlook



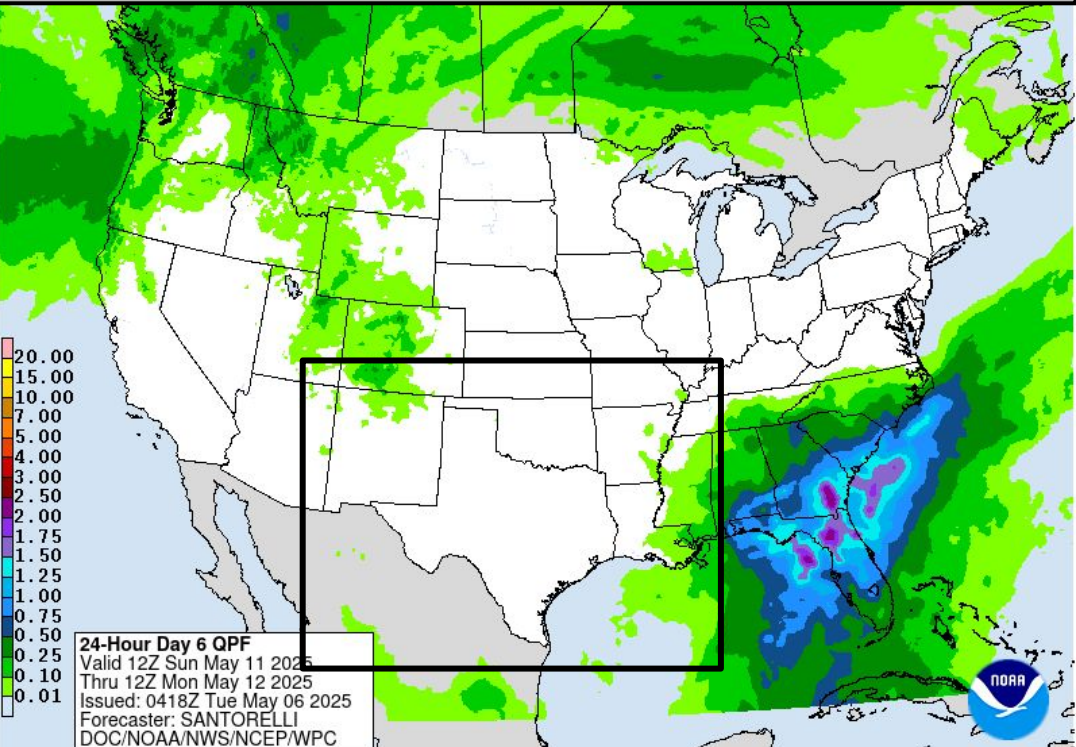


Sunday's Weather

Forecast Chart

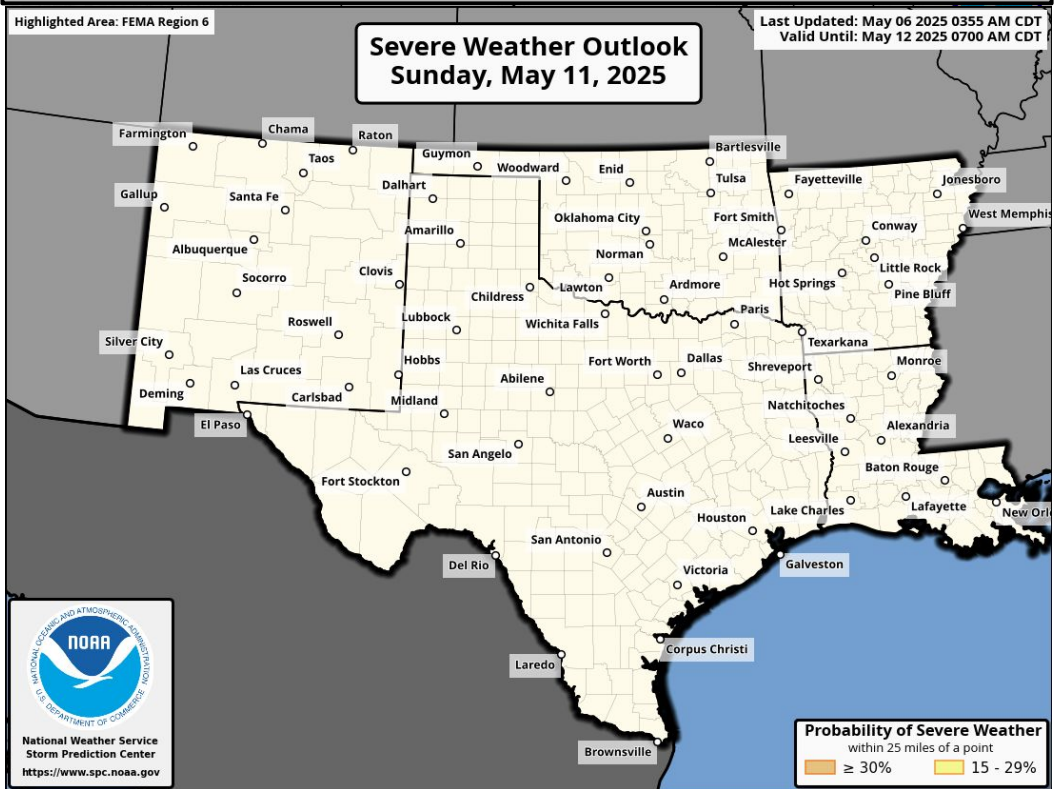


Forecast Rainfall



No significant weather expected.

Severe Weather Outlook

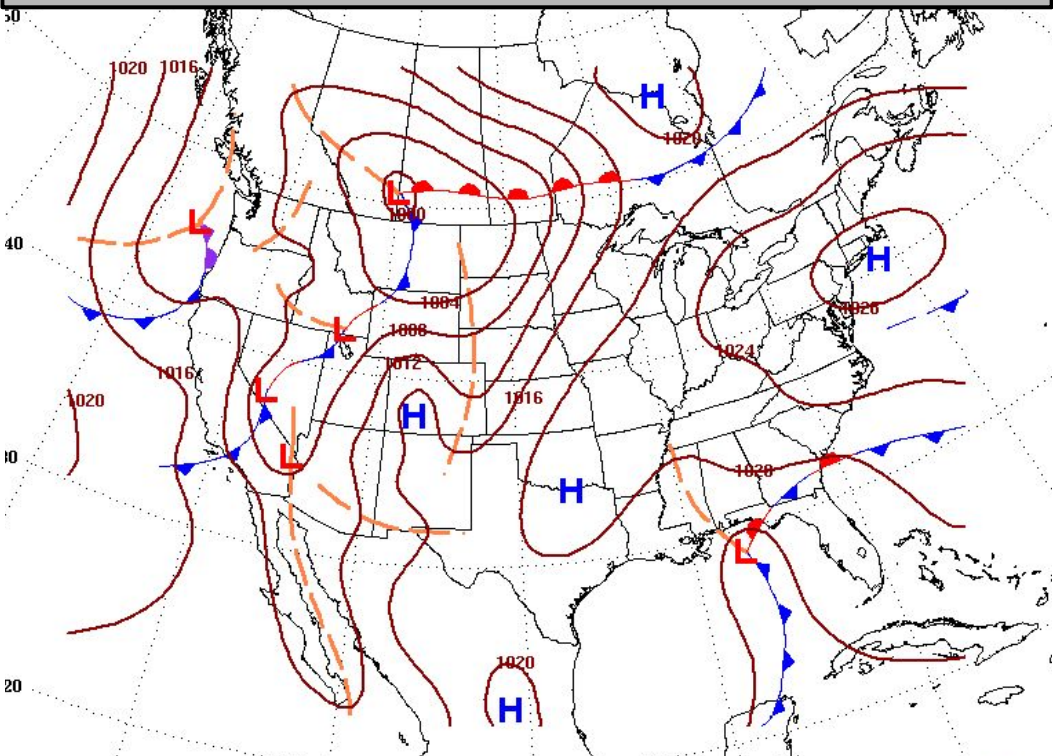


Excessive Rainfall Outlooks
not available beyond Day 5

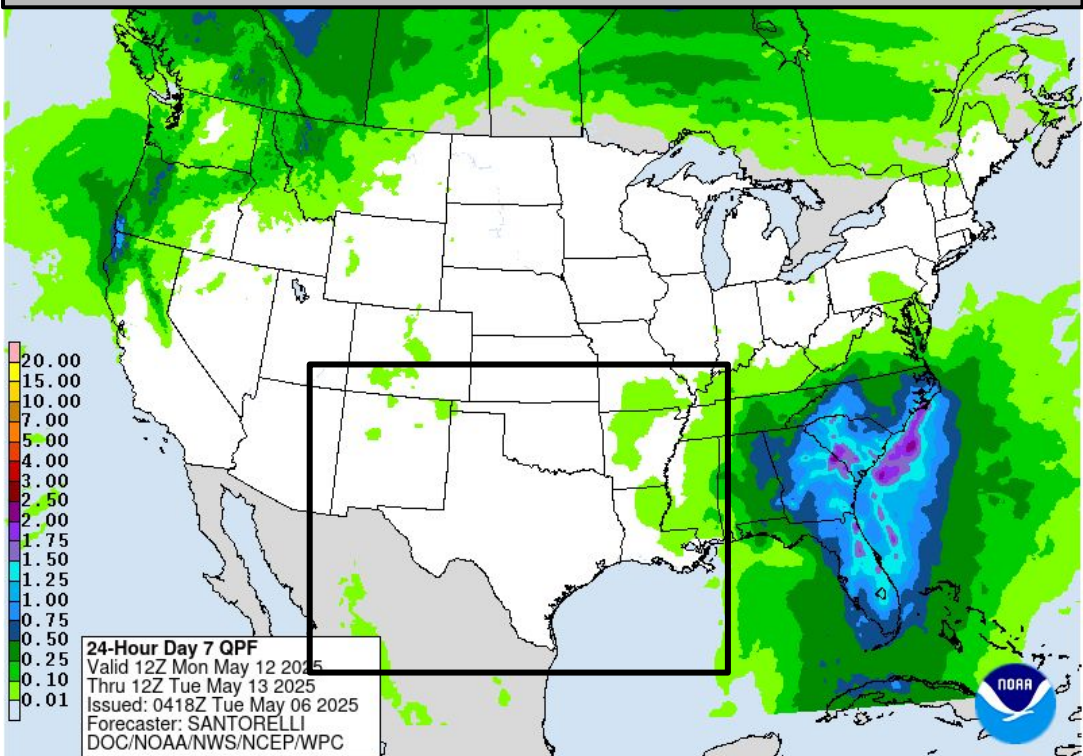


Monday's Weather

Forecast Chart

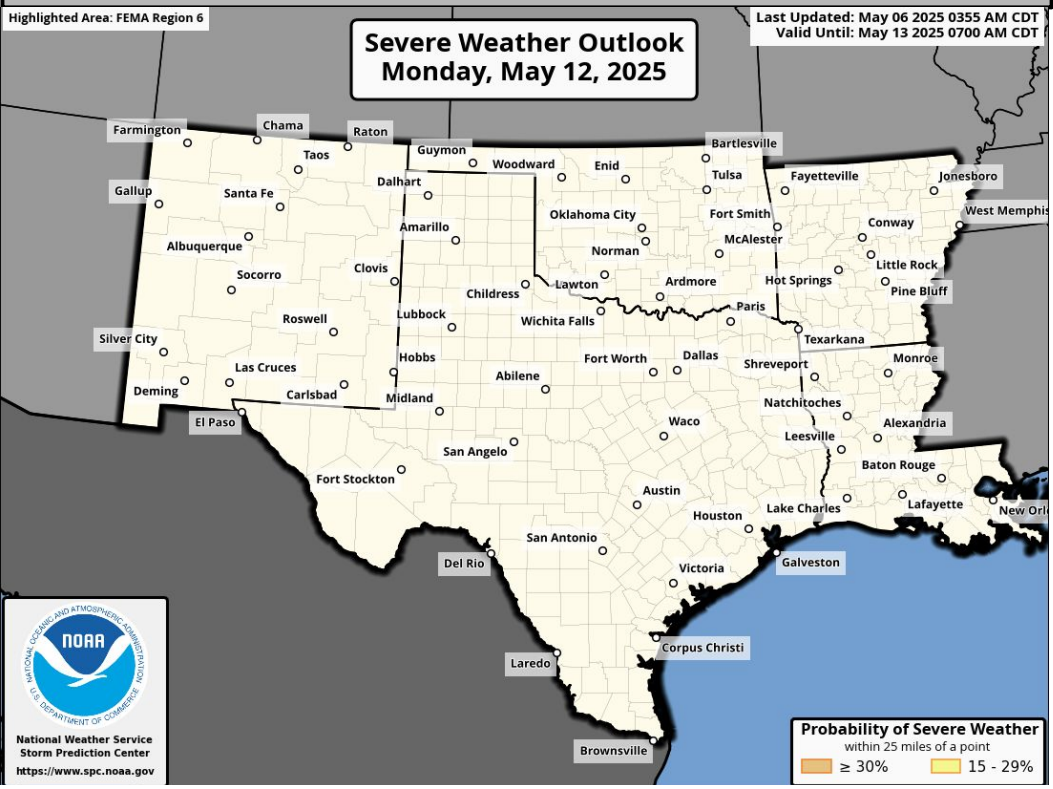


Forecast Rainfall



No significant weather expected.

Severe Weather Outlook

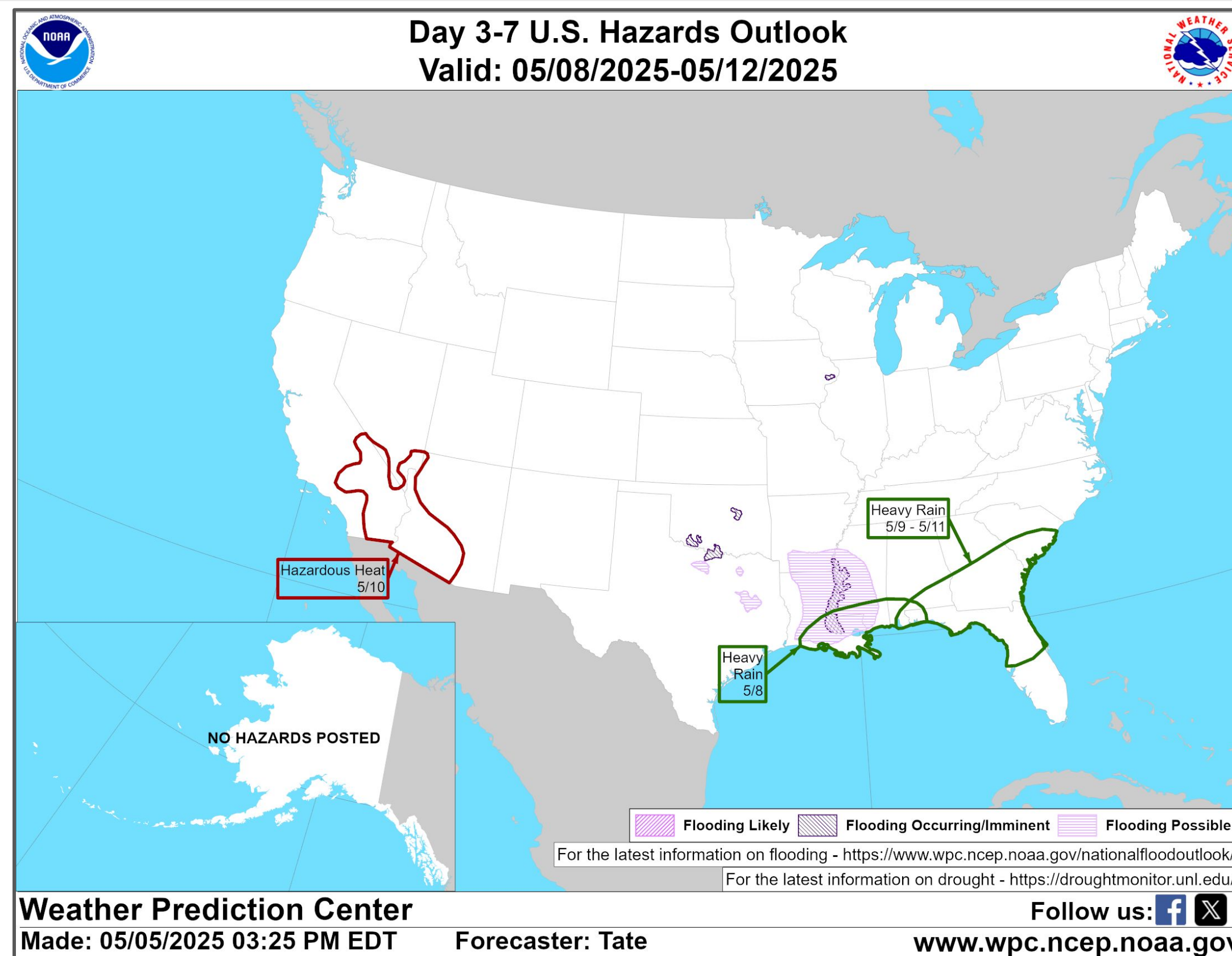


Excessive Rainfall Outlooks not available beyond Day 5





“Day 3-7” Hazards Outlook



NOTE: These outlooks are issued in the afternoon and only issued on weekdays. Because of that and the fact that these slides are issued in the mornings:

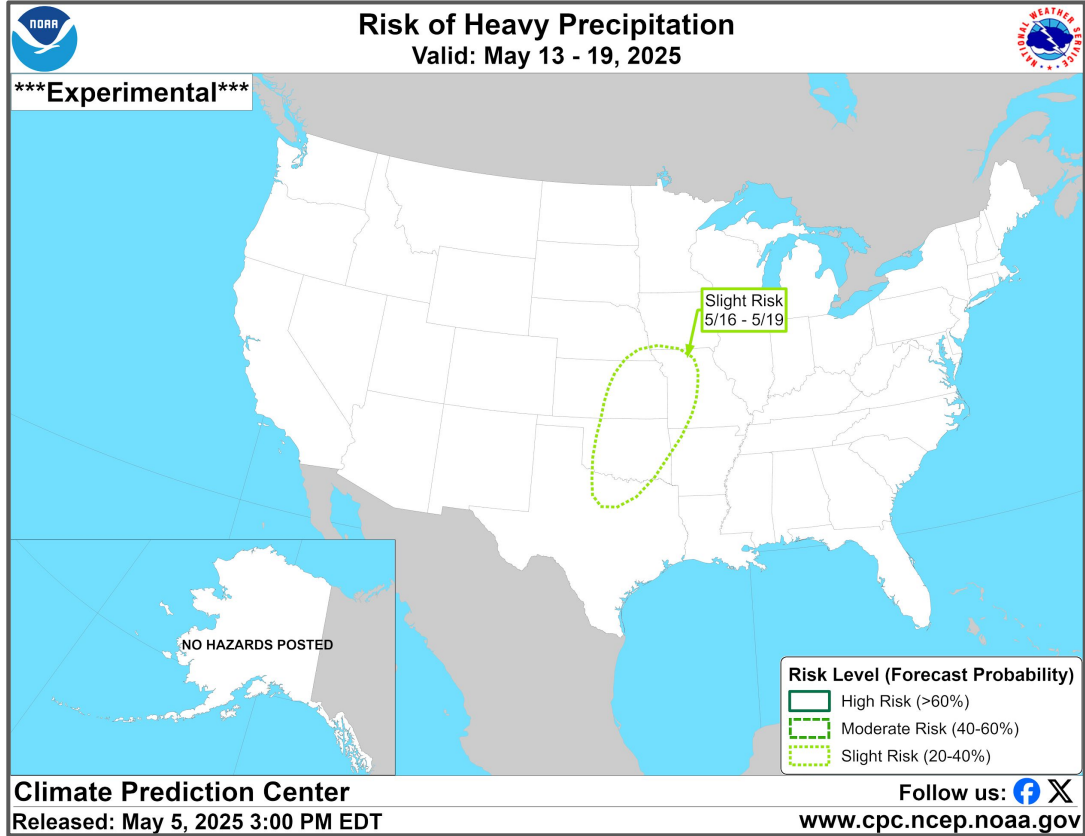
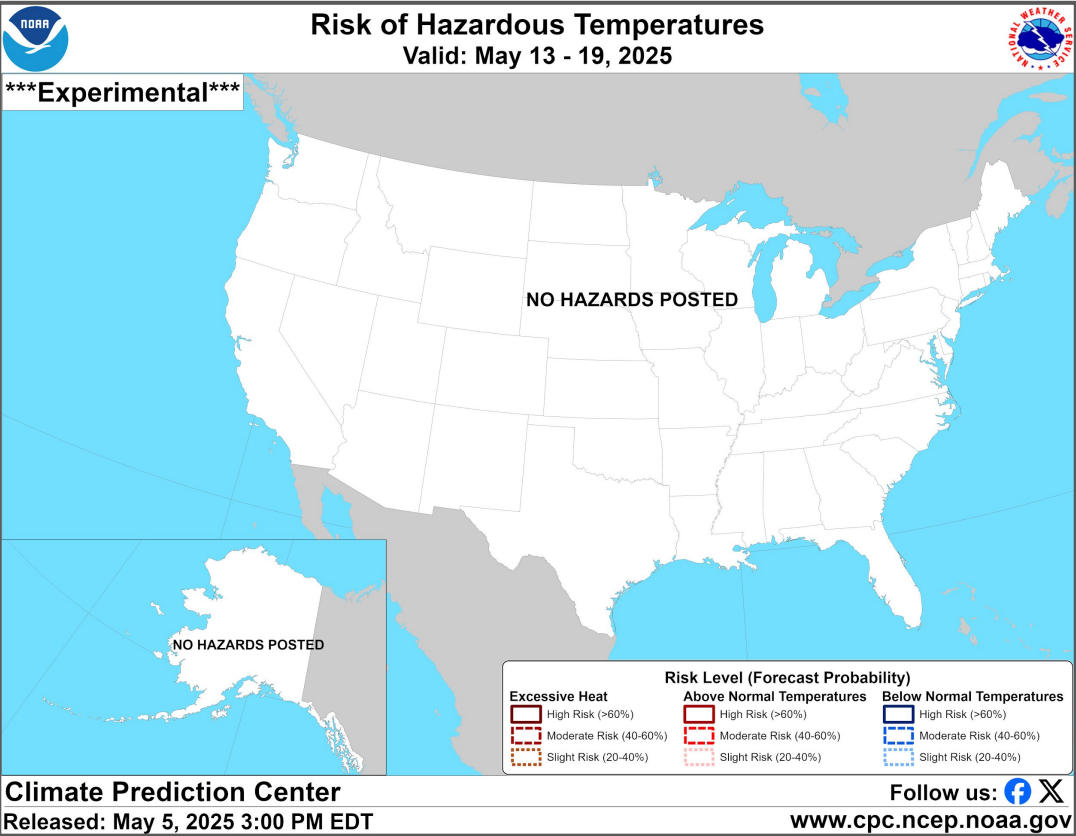
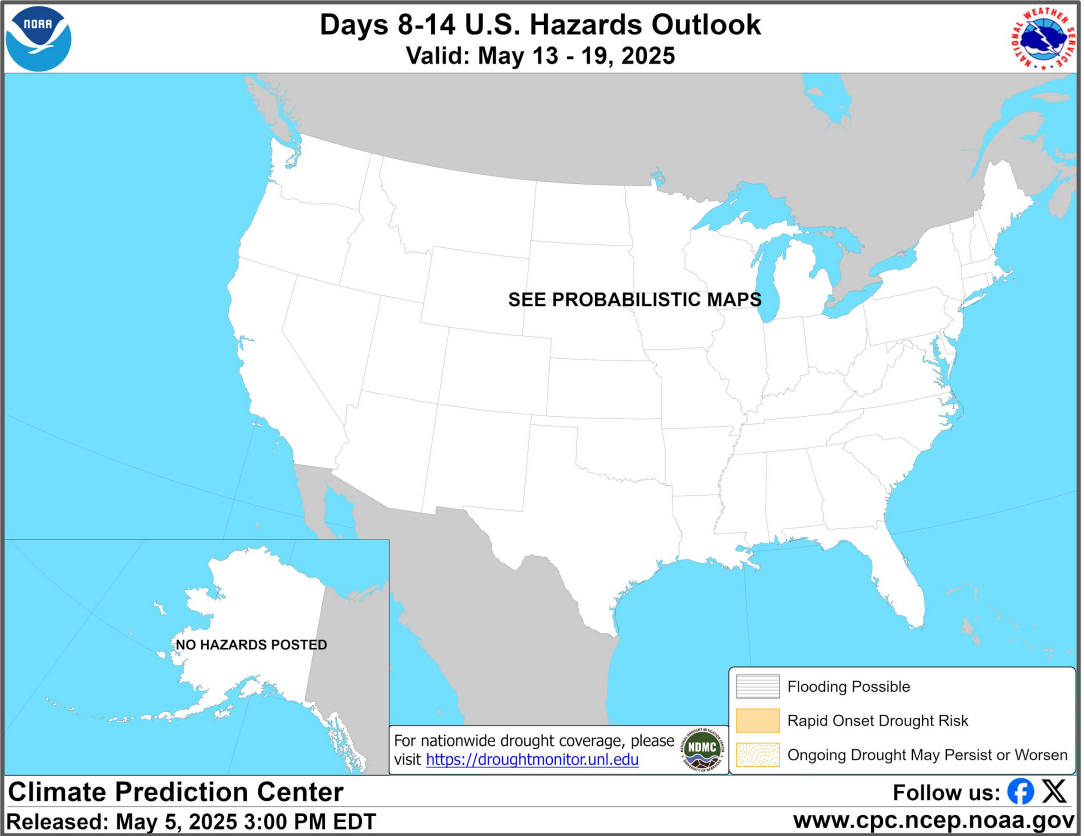
1. The “day 3-7” will really be days 2-6
2. This slide will be hidden on Mondays and Sundays so the data/information is not too old

For additional information on this outlook go to <https://www.wpc.ncep.noaa.gov/threats/threats.php>





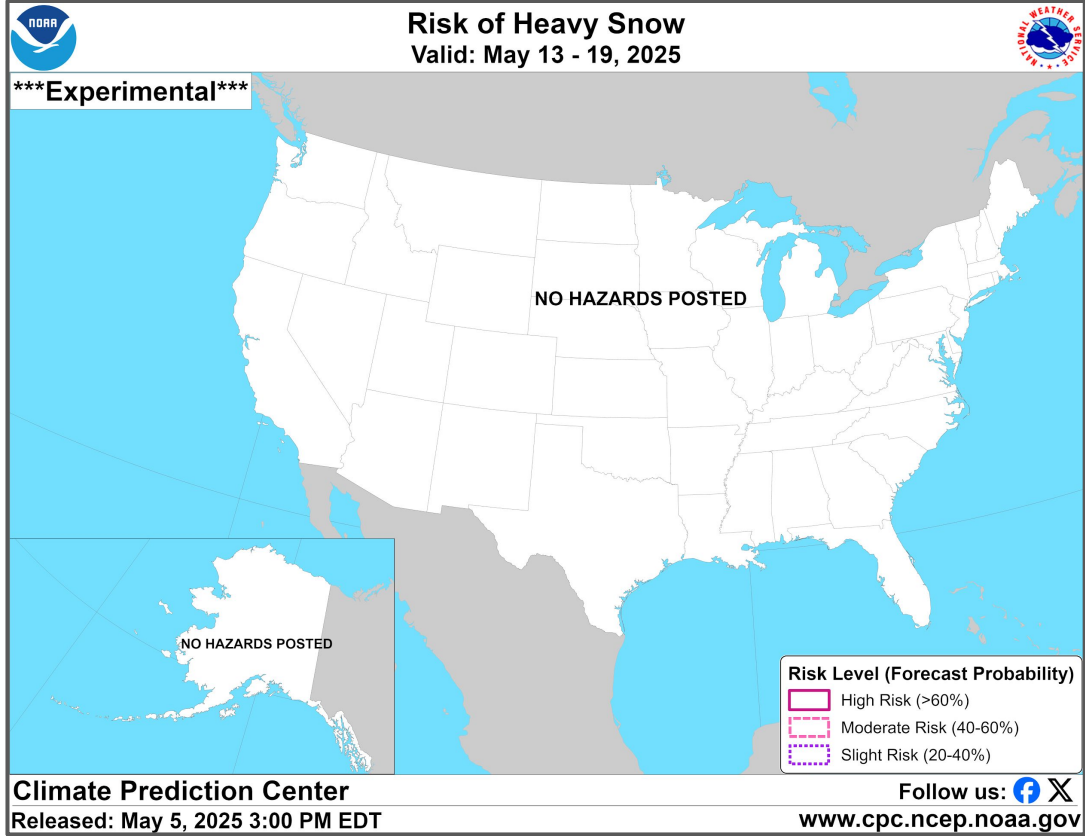
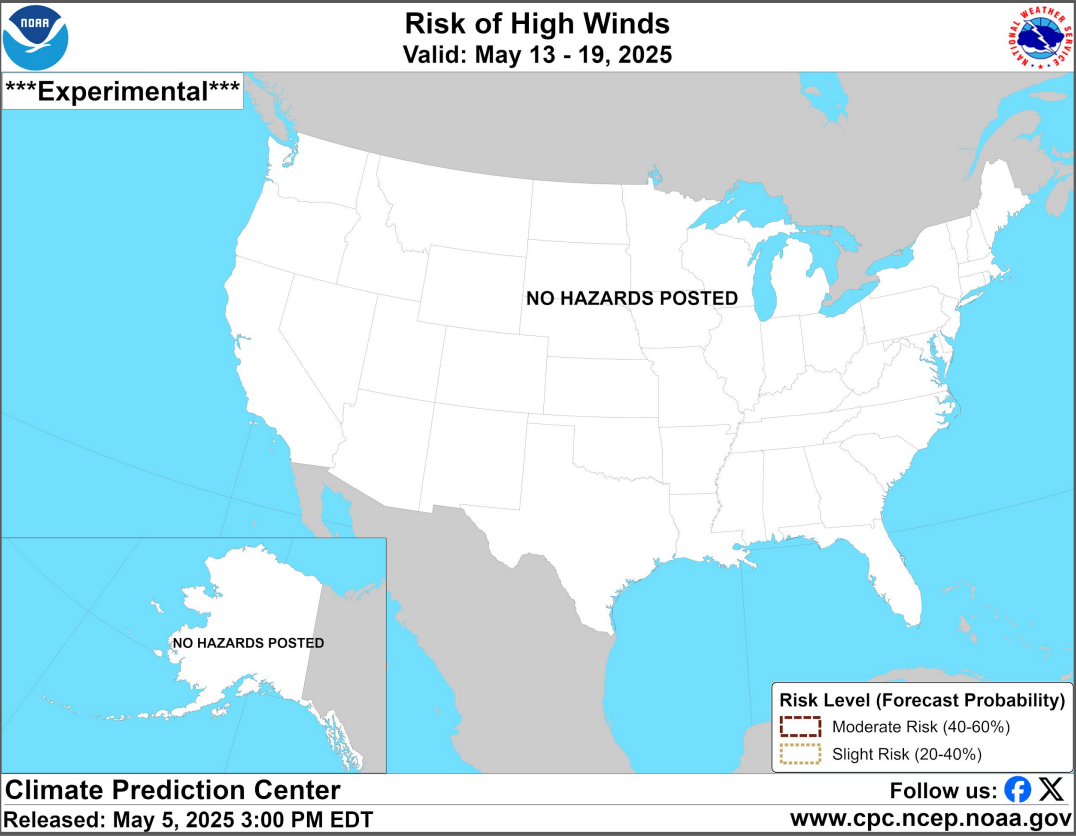
“Day 8-14” Hazards Outlook



NOTE: These outlooks are issued in the afternoon and only issued on weekdays. Because of that and the fact that these slides are issued in the mornings:

1. The “day 8-14” will really be days 7-13
2. This slide will be hidden on Mondays and Sundays so the data/information is not too old

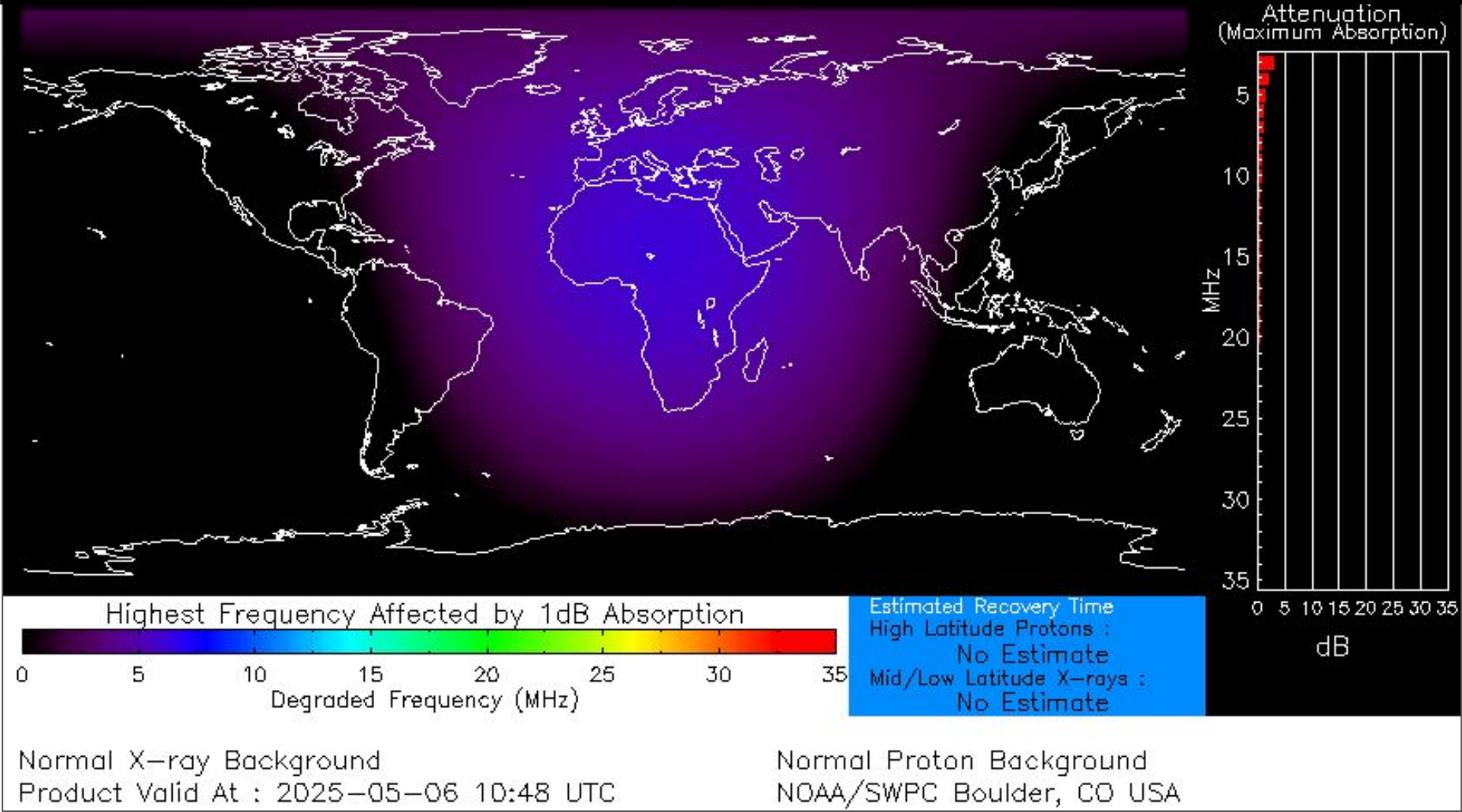
For additional information on this outlook go to <https://www.cpc.ncep.noaa.gov/products/predictions/threats/threats.php>





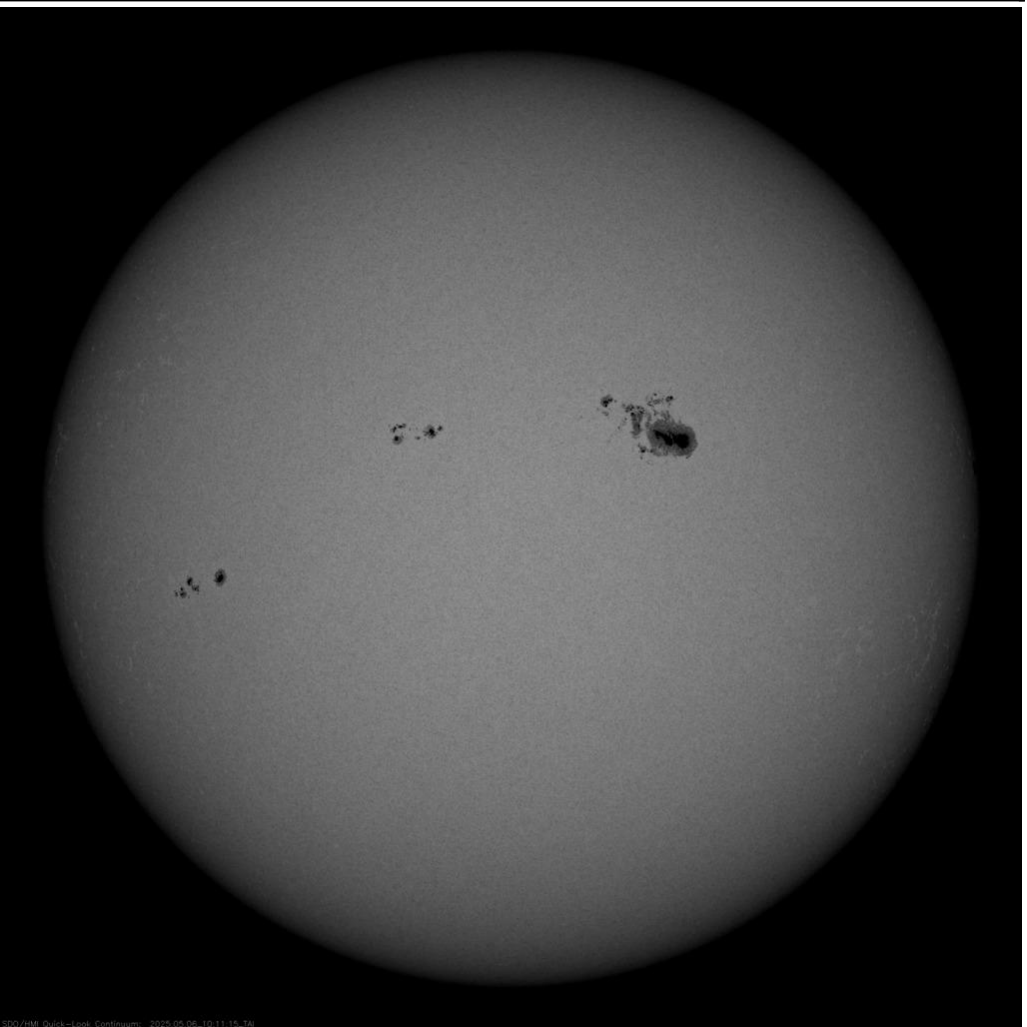
Space Weather 3-Day Forecast

	Tuesday, May 6	Wednesday, May 7	Thursday, May 8
Geomagnetic Storms	Active (Max Kp = 4)	Unsettled (Max Kp = 3)	Unsettled (Max Kp = 3)
Solar Radiation Storm (S1-S5)	5%	5%	5%
Radio Blackout (R1-R2)	45%	45%	45%
Radio Blackout (R3-R5)	5%	5%	5%



[Description of the Space Weather Storm Scales](#)

[Latest 3-Day Space Weather Forecast](#)



Weather “Threat” Matrix for FEMA Region VI			
Color	Definition	Criteria	Example(s)
Green	Little to None Safety: Rarely a Direct Threat to Life and Property Impact Potential: Typically Results in Little Inconvenience to Daily Routines	Severe: Marginal Risk from SPC Flooding: Minor flooding expected over localized areas Tropical: None Fire Weather: No Watches/Warnings, fuel moisture above 10% or green up active	<ul style="list-style-type: none"> Thunderstorms expected over LA this afternoon; a few may produce winds to knock down a few trees Something that happens almost every day in a particular season such as seabreeze storms in coastal TX
Yellow	Minor Safety: Rarely a Direct Threat to Life and Property Impact Potential: Typically Results in Some Inconvenience to Daily Life	Severe: Slight Risk from SPC Flooding: Nuisance flooded expected for a widespread area, or Minor flooding expected over isolated areas Tropical: A weak tropical wave expected to move towards or near any coastline Fire Weather: Red Flag Watches/Warnings and/or SPC outlines enhanced or critical fire outlook	<ul style="list-style-type: none"> 2-3 inches of rainfall expected over central AR today and tonight; some minor (brief) street flooding possible Scattered severe storms possible, one or two tornadoes expected, along with reports of strong winds/wind damage and ~1” hail
Orange	Moderate Safety: Often Threatening to Life and Property, Some Damage Unavoidable Impact Potential: Typically Results in Minor Disruption to Daily Life	Severe: Enhanced Risk from SPC Flooding: Minor flooding expected over a widespread area (including urban locations), or Moderate flooding expected over isolated areas Tropical: A Tropical Storm expected to move towards or near any coastline Fire: Critical fire outlook for more than 2 consecutive days, Warnings for 2 or more consecutive days, D3-D4 drought conditions	<ul style="list-style-type: none"> A snow/sleet mix is expected to move through or near the DFW area tomorrow morning; travel impacts likely Numerous severe storms possible, a few tornadoes possible along with several reports of wind damage along with damaging hail Some large fires reported, burn bans advertised, critical conditions expected
Red	Major Safety: Extensive Property Damage Likely, Life Saving Actions Also will be Needed Impact Potential: Will likely result in Large Disruption to Daily Life	Severe: Moderate Risk from SPC Flooding: Moderate flooding expected over a widespread area (including urban locations) Tropical: A Hurricane expected to move towards or near any coastline Fire: Large areas of critical conditions for 2 or more days, Warnings for 3 or more days, Severe to extreme drought	<ul style="list-style-type: none"> A Category 1 hurricane will be moving towards the NW Gulf in the next few days Widespread severe storms likely, strong tornadoes, widespread wind damage, and destructive hail Large fires ongoing throughout the area with critical fire weather conditions expected to continue
Purple	Extreme Safety: Property Damage Unavoidable, Immediate Action to Save Life will be Needed Impact Potential: Typically Results in Long-Lived Widespread Major Disruption to Daily Life	Severe: High Risk from SPC Flooding: Major flooding expected over a widespread area (including urban locations) Tropical: A Major Hurricane (Cat3 or greater) expected to move towards or near any coastline Fire: Large area of critical conditions for 2 or more days, Warnings for 3 or more days, Long term (months) of severe to extreme drought	<ul style="list-style-type: none"> A Category 4 hurricane is headed towards the SE LA; major storm surge, flooding and damaging winds anticipated to begin tomorrow Widespread severe storms expected, tornado outbreak probable with long-lived, very widespread and particularly intense storms

Criteria for the color codes in this briefing is to the left, please provide any feedback to sr-srh.roc@noaa.gov



National Weather Service

Southern Region Headquarters

Regional Operations Center

Fort Worth, TX



Phone: (682) 703-3747



Facebook: NWSSouthern



E-mail: sr-srh.roc@noaa.gov



X: NWSSouthern



Web: www.weather.gov/srh

