



# FEMA



Prepared by  
*Mark Wiley*

# FEMA Region 6 Weather Threat Briefing

## Monday, August 04, 2025

**Disclaimer:** The purpose of this briefing is to provide a **Regional** weather threat assessment and is meant as a general overview. County/Parish decision makers should consult their local NWS forecast offices for the latest detailed, local weather information. To find your local NWS forecast office, go to [www.weather.gov/srh](http://www.weather.gov/srh).



National Oceanic and  
Atmospheric Administration  
U.S. Department of Commerce

National Weather Service  
Southern Region



# Summary

- **Severe Weather:** Marginal risk (level 1 of 5) for severe storms this afternoon/evening in **NE NM** and the **TX/OK** Panhandle region.
- **Heat:** Dangerous heat will expand across **C-SW TX** and into **NM** this week. Afternoon highs by later in the week in **OK** will also trend higher.
- **Tropical:** No tropical impacts expected in **FEMA 6** over the next **7** days.





# FEMA Region 6 Threat Matrix

Next 7 days

	Monday, Aug 4	Tuesday, Aug 5	Wednesday, Aug 6	Thursday, Aug 7	Friday, Aug 8	Saturday, Aug 9	Sunday, Aug 10
Severe Storms	NE NM, TX/OK Panhandles						
Heavy Rain / Flash Flooding	SE LA						
Burn Scars				N NM			
Tropical							
Heat	C-SW TX, E NM	C-SW TX, E NM	NM, OK, TX	NM, OK, TX	NM, OK, TX	NM, OK, TX	NM, OK, TX
River Flooding							

*\*Threat levels are based on FEMA Region 6 criteria. State or local threat level criteria may differ.\**  
*For more details on the colors in the threat matrix refer to the last slide in this briefing.*

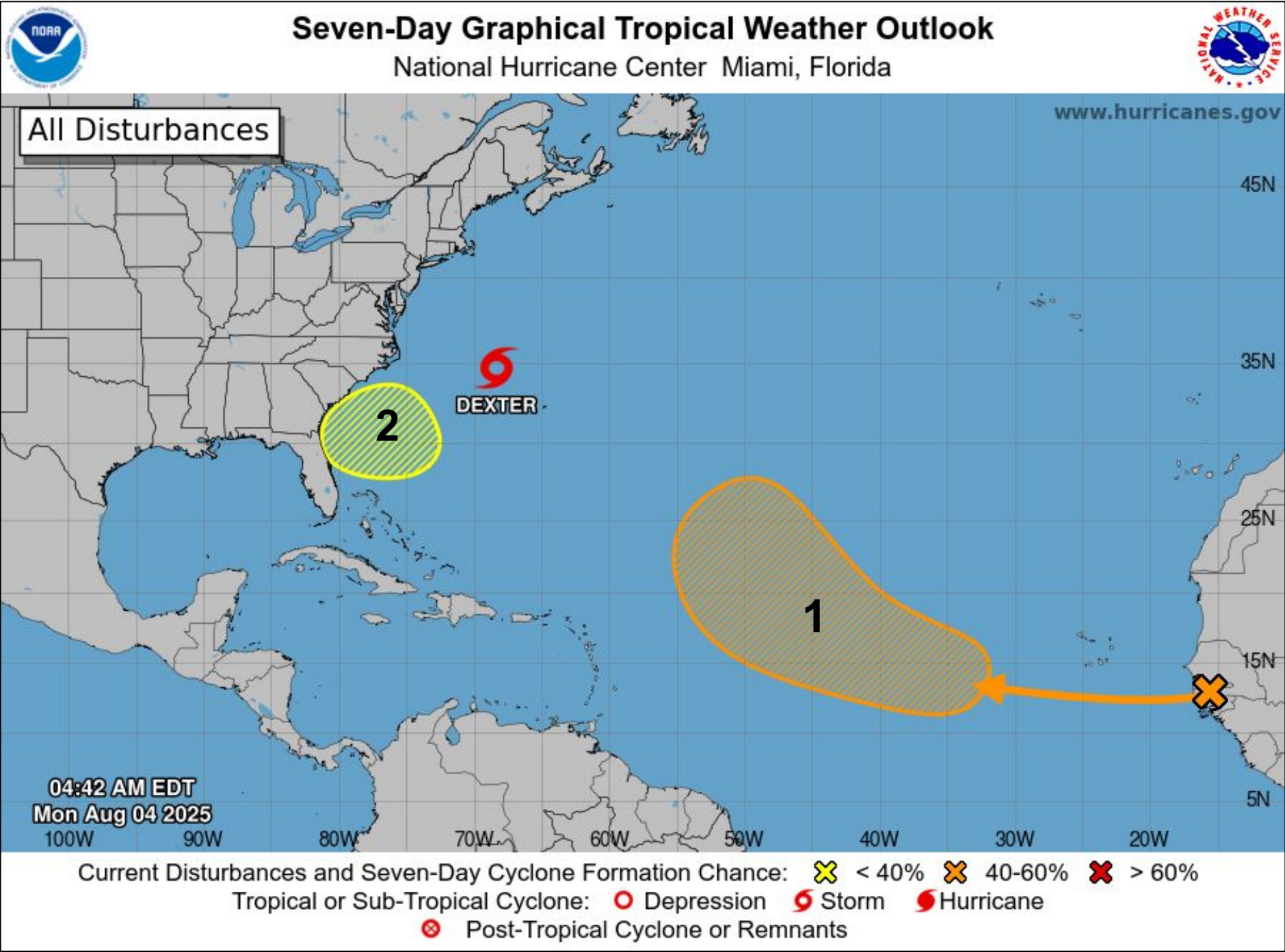
Risk Levels	Little to None	Minor	Moderate	Major	Extreme
-------------	----------------	-------	----------	-------	---------



# Tropical Weather Outlook – Atlantic/Gulf

Areas of Possible Development		
Area	Chance of Development	Potential Impacts to FEMA 6
1	Medium	None over the next 7 days.
2	Low	None.

Active Tropical Cyclones	
Storm	Potential Impacts to FEMA 6
T.S. Dexter	None.



See <http://www.hurricanes.gov> for the latest on the tropics or any active storms

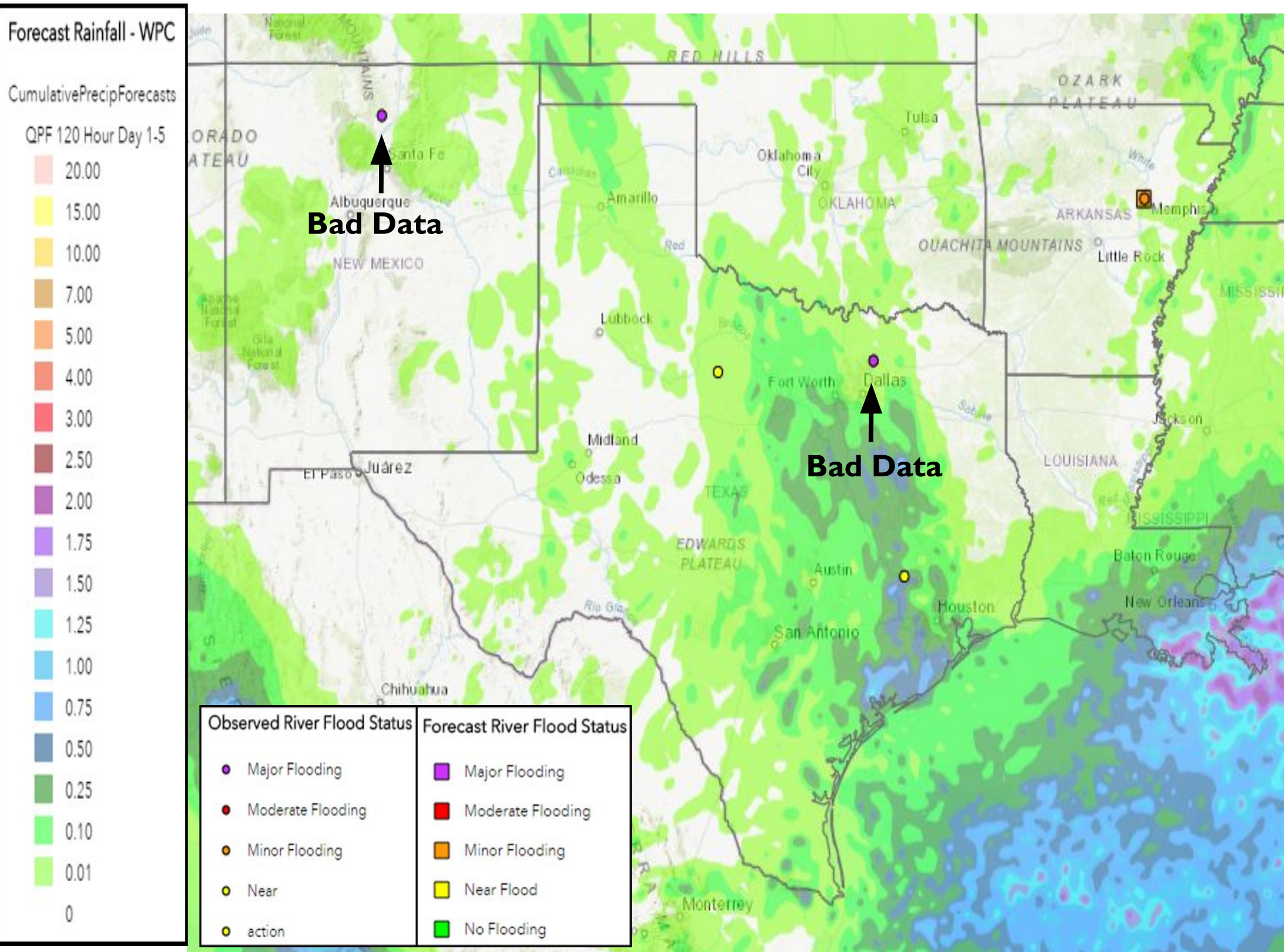






# 5-Day Precipitation Forecast & River Flood Status

*Note: Even though the image displays 5 days of forecasted rainfall, river forecasts only include 1-2 days of rainfall*



**Isolated minor river flooding in E AR is forecast to continue thru mid-week. Rural secondary crossings, roadways, and croplands will be flooded.**

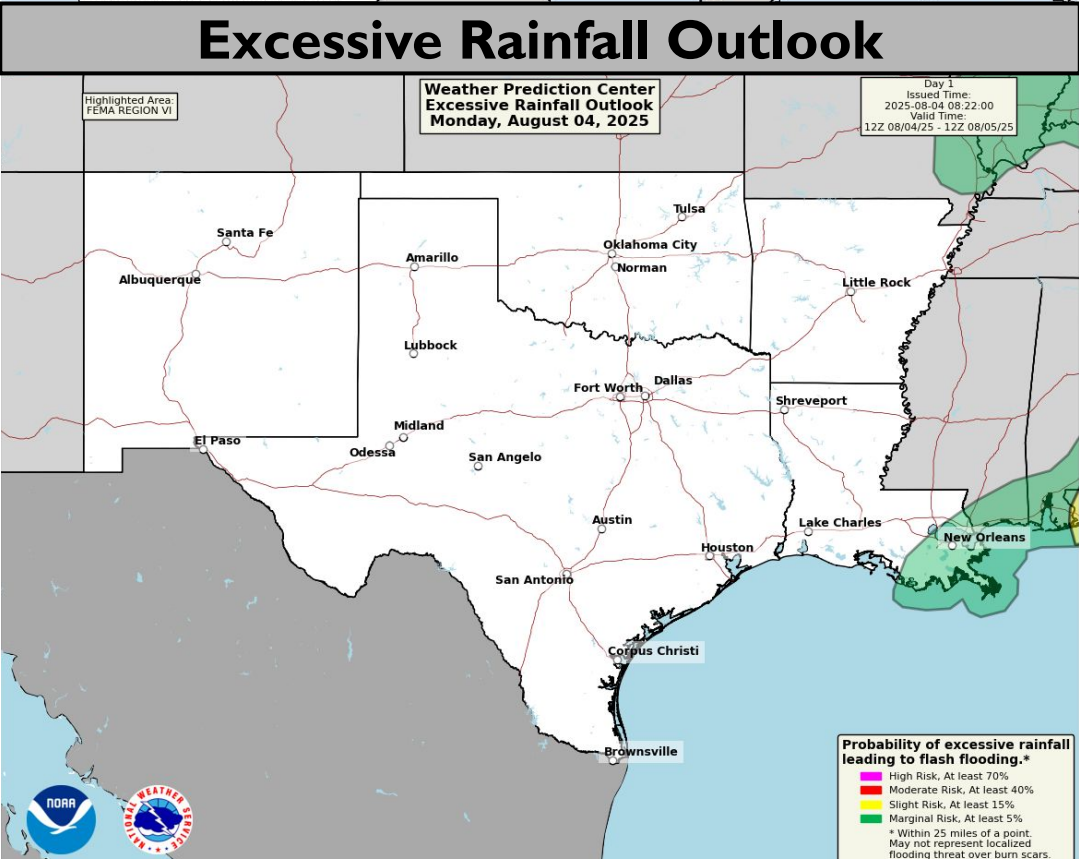
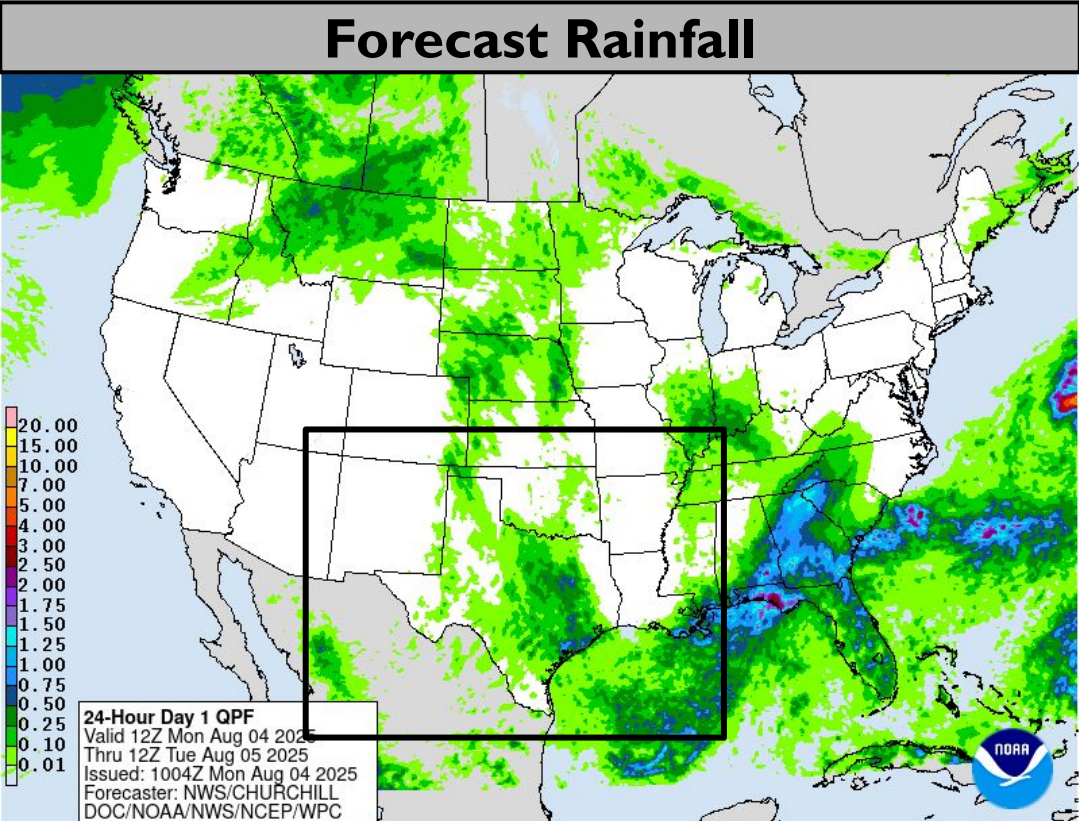
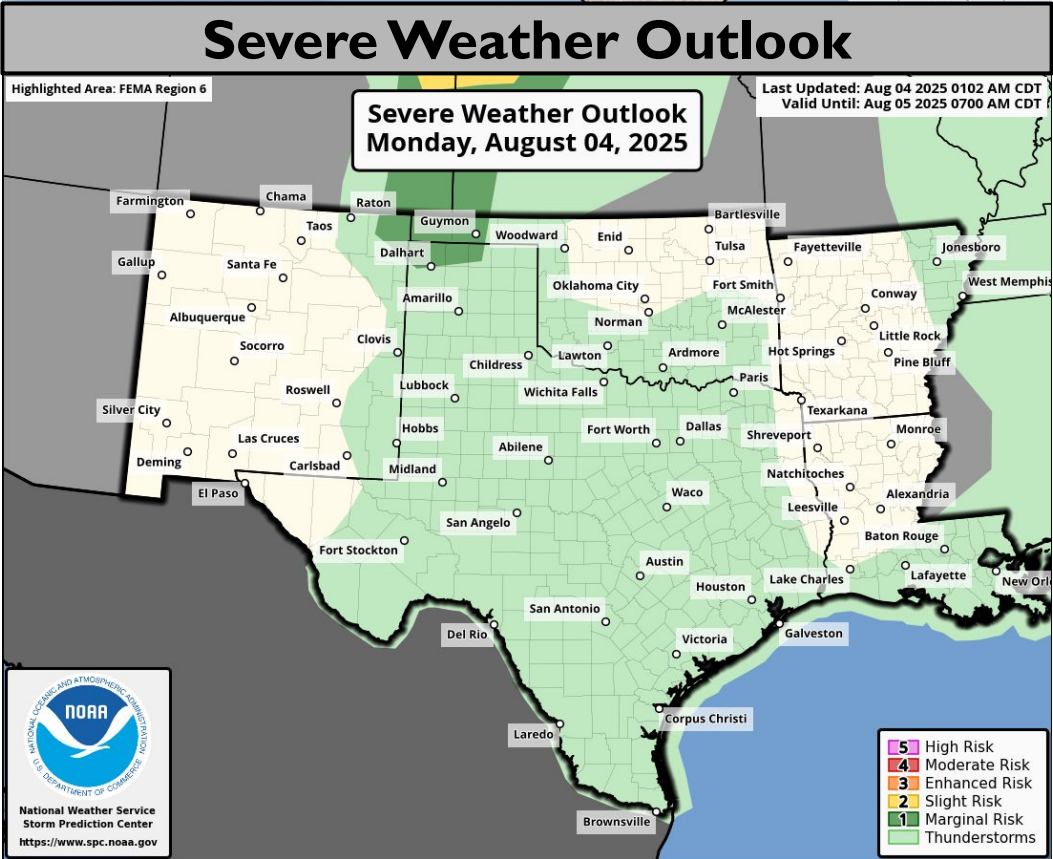
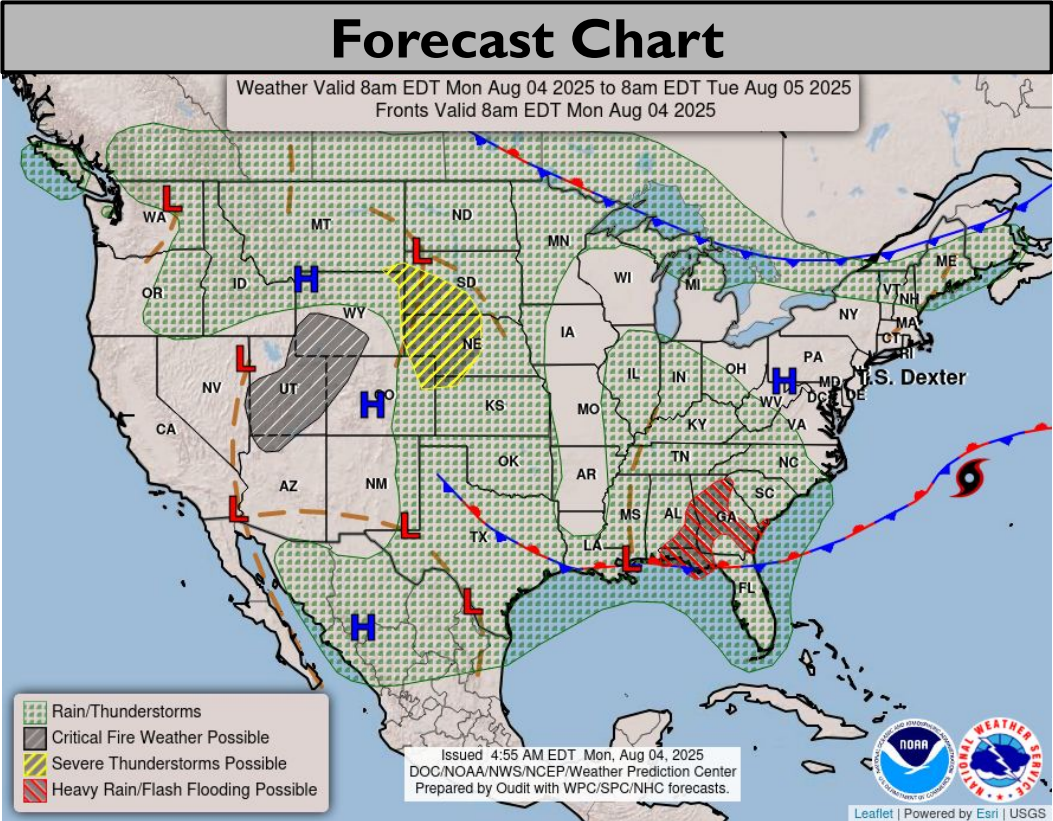
*Note: Numerical levels (e.g. level 1 of 4) will not be assigned to riverine flooding due to the varying levels of impacts across flood categories.*







# Today's Weather



**Heat Risk across C-SW TX, E NM.**

**Marginal risk (level I of 4) for heavy rain in SE LA.**

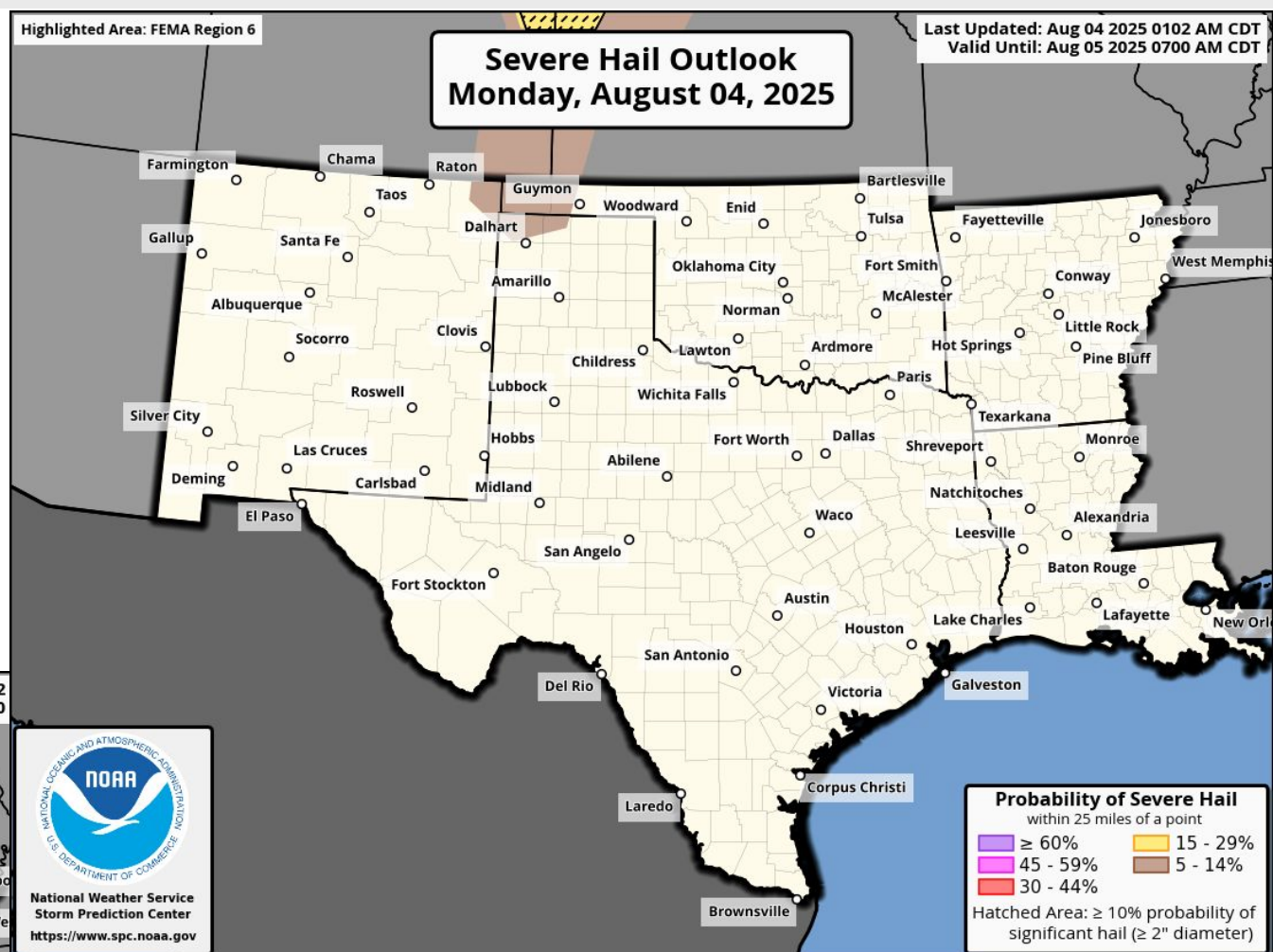
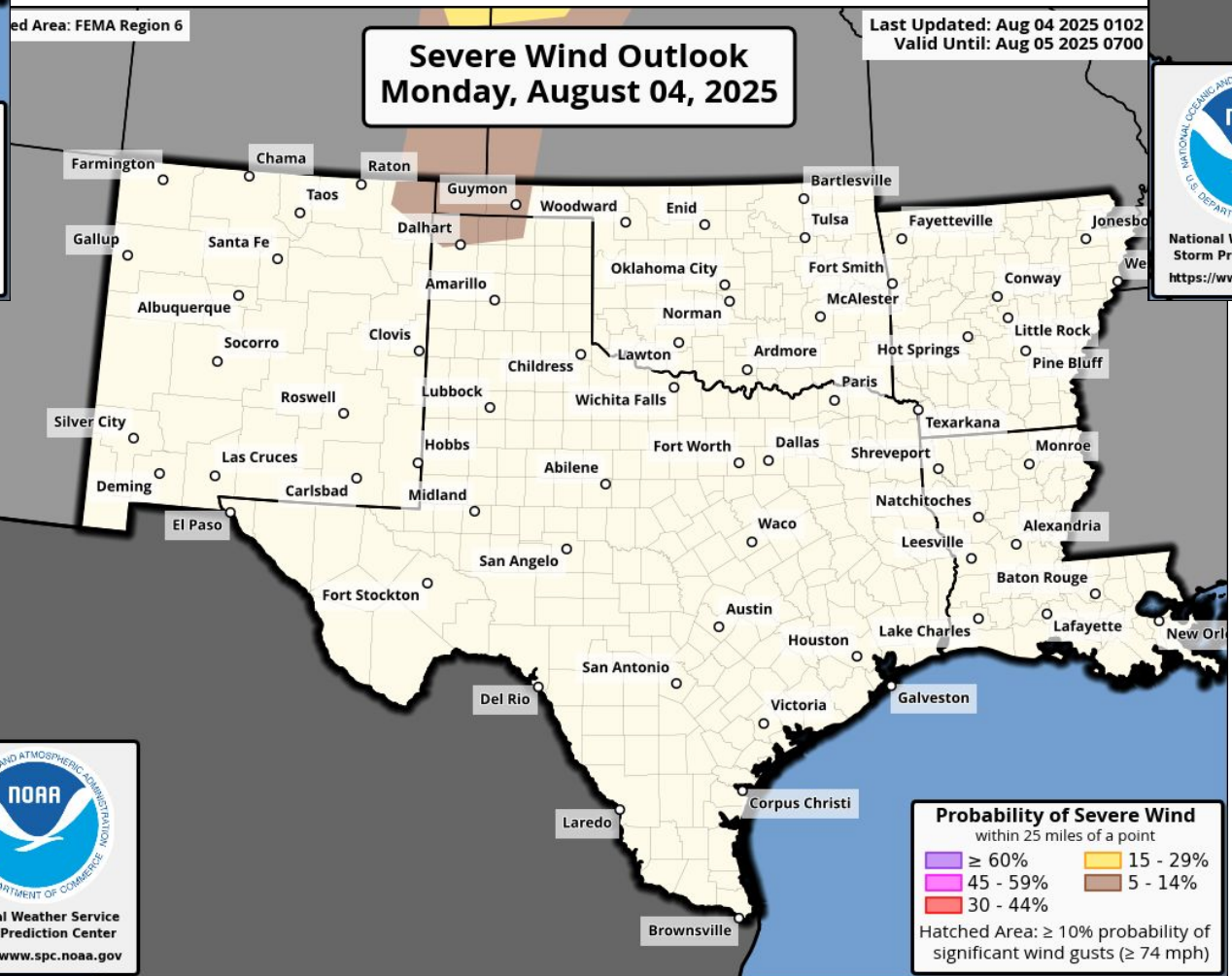
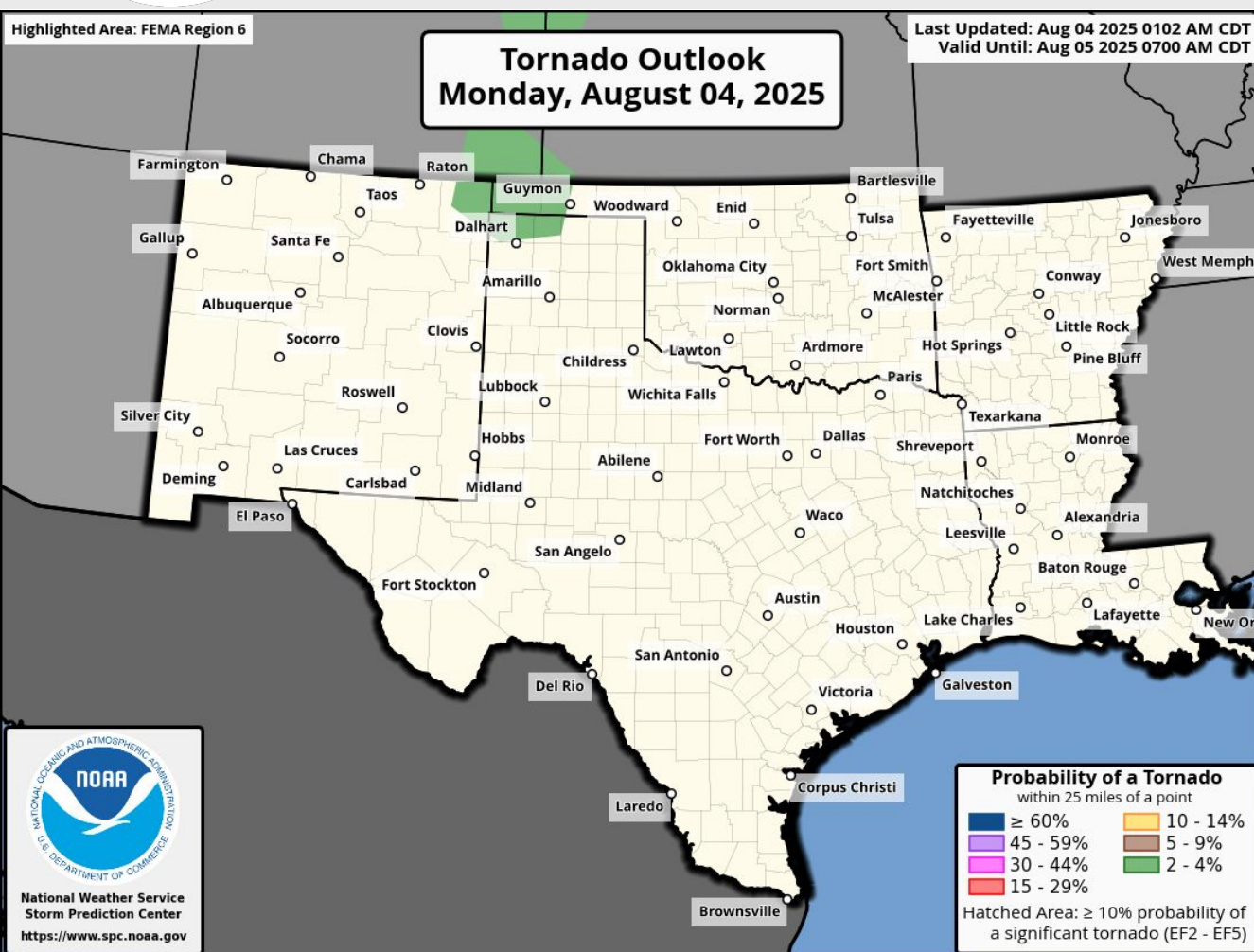
**Marginal Risk (level I of 5) for severe storms this afternoon/evening across NE NM and in the TX/OK Panhandles.**

***\*Burn Scar Flash Flooding information on Burn Scar Matrix slides\****





# Today's Tornado & Severe Wind / Hail Probabilities

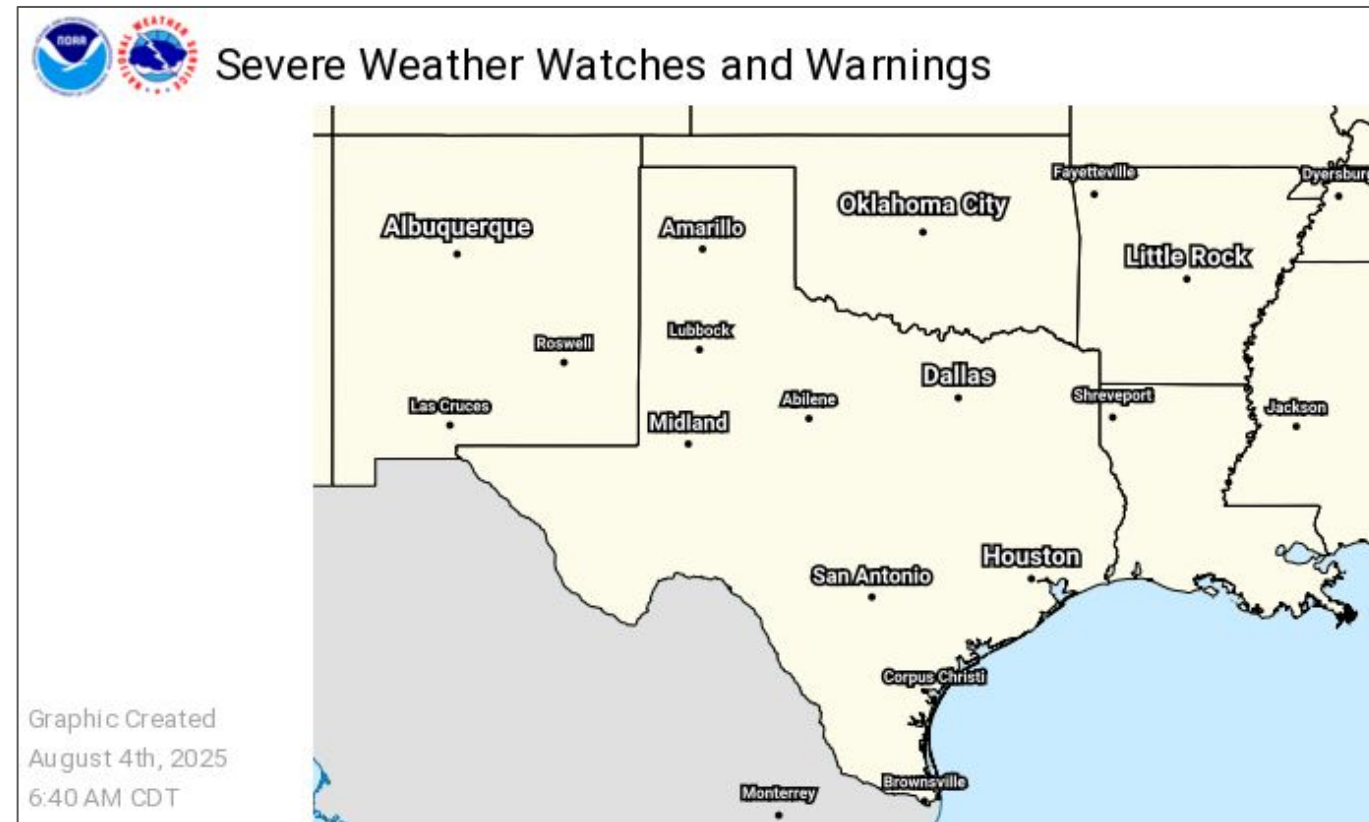




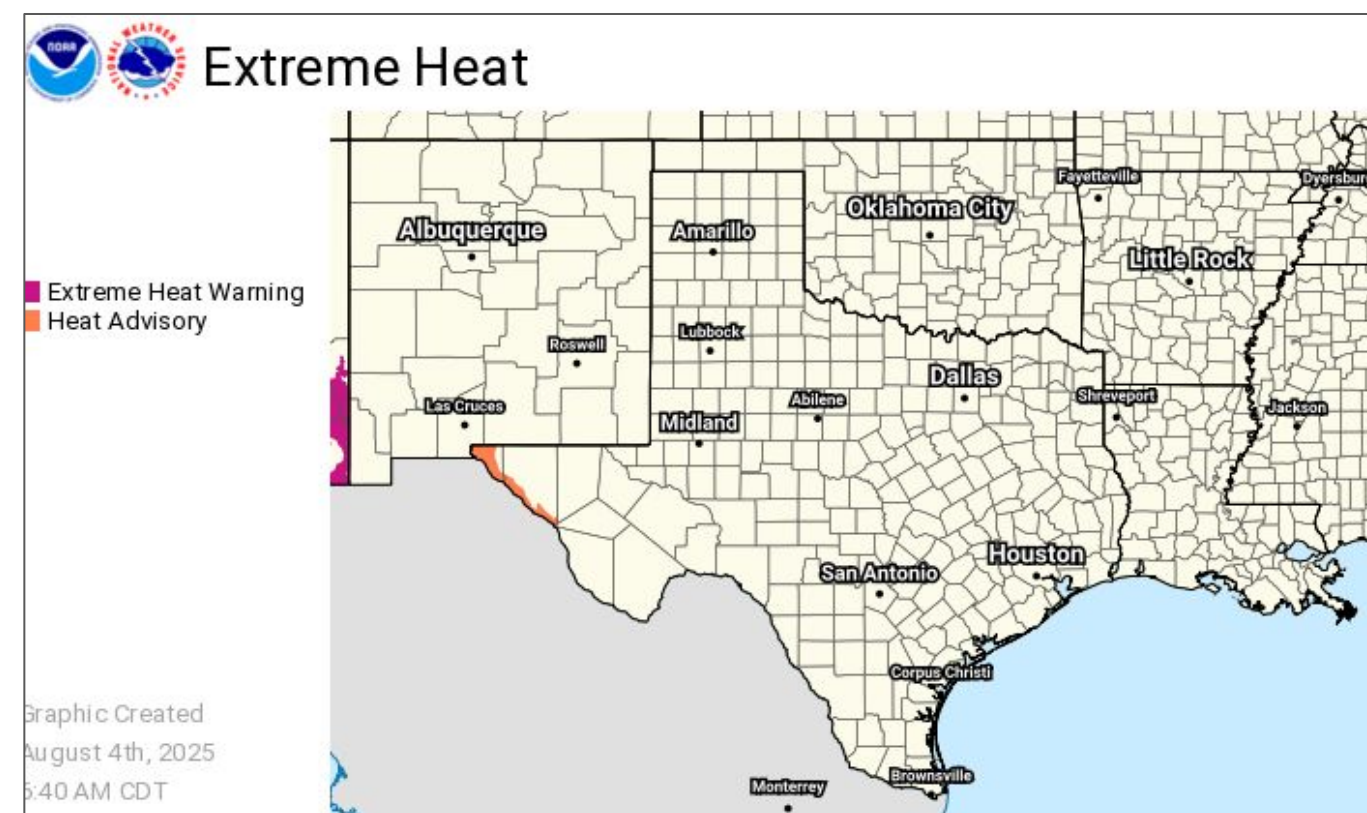


# Watches, Warnings, and Advisories

Wind, Severe, Heat, and Flood Hazards



**Heat Advisories in W TX,  
Coastal Bend TX in effect.  
Temps feeling between  
107-114 degrees.**



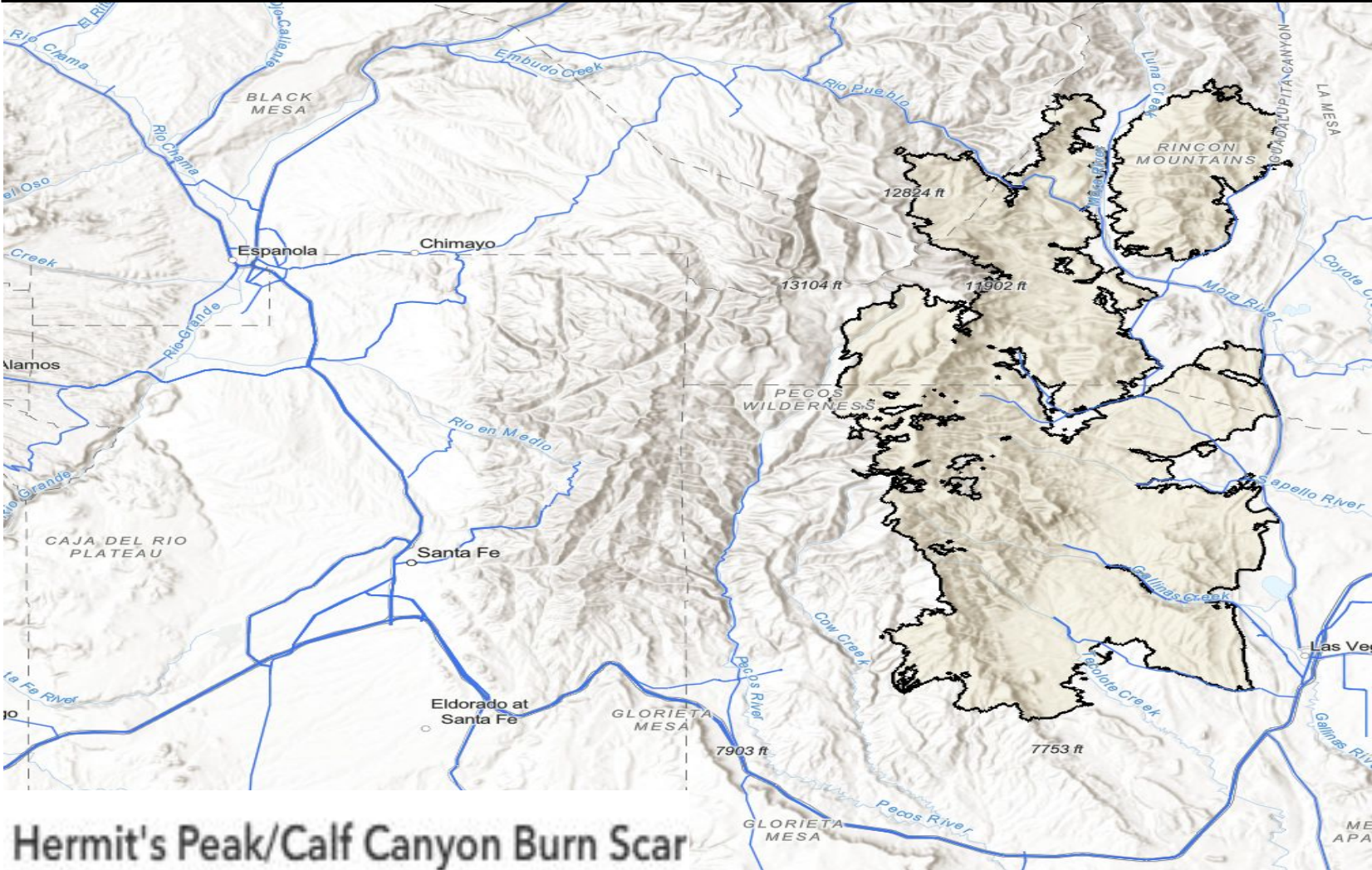




# Burn Scar Debris Flow Risk - HPCC Scars New Mexico

## Hermit's Peak/Calf Canyon Burn Scar

	Monday, Aug 4	Tuesday, Aug 5	Wednesday, Aug 6	Thursday, Aug 7
Flash Flooding	Little to None	Little to None	Little to None	Minor
Timing - CDT				Afternoon/Evening



Little to None	No Flash Flood Threat
Minor (level 1 of 4)	Slight Risk of Flash Flooding
Moderate (level 2 of 4)	Probability of Flash Flooding Issuance 40% to 60%
Major (level 3 of 4)	Flood Watch Issued OR Debris Flow Probability > 50%
Extreme (level 4 of 4)	Life Threatening Flash Flooding Likely - Historic Type Day
<ul style="list-style-type: none"><li>WPC's Excessive Rainfall Outlook is <i>Not Applicable</i> to burn scars.</li></ul>	



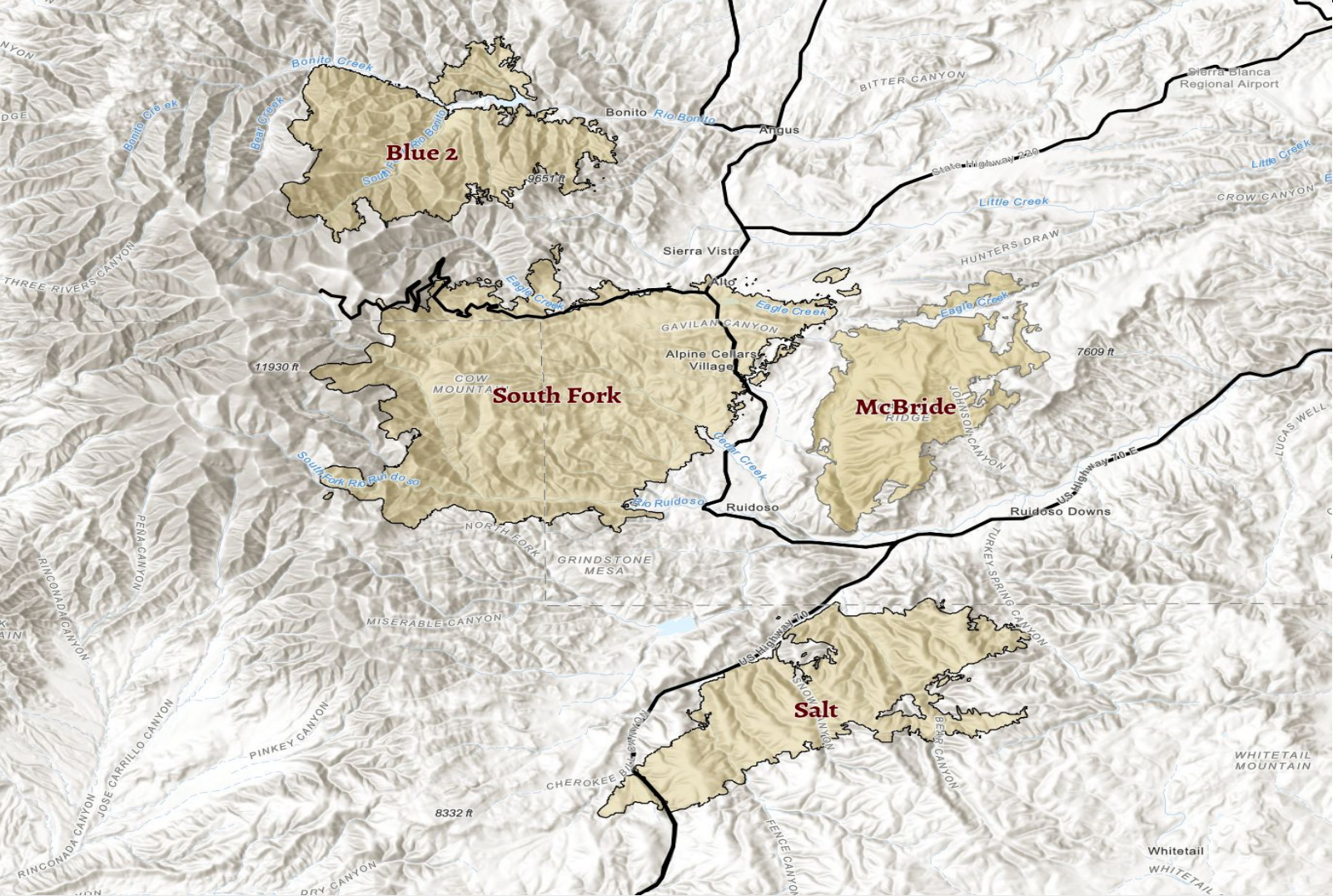




# Burn Scar Debris Flow Risk - Ruidoso, New Mexico

## Sacramento Complex

	Monday, Aug 4	Tuesday, Aug 5	Wednesday, Aug 6	Thursday, Aug 7
Flash Flooding	Little to None	Little to None	Little to None	Little to None
Timing - CDT				

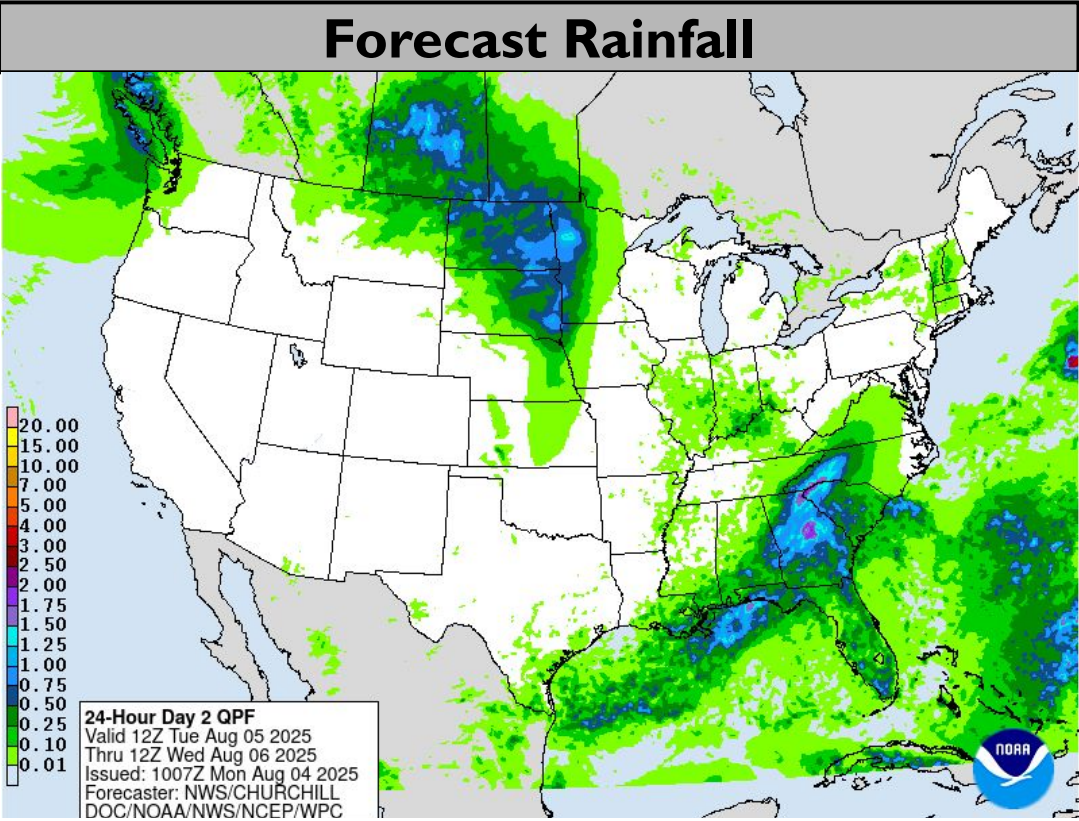
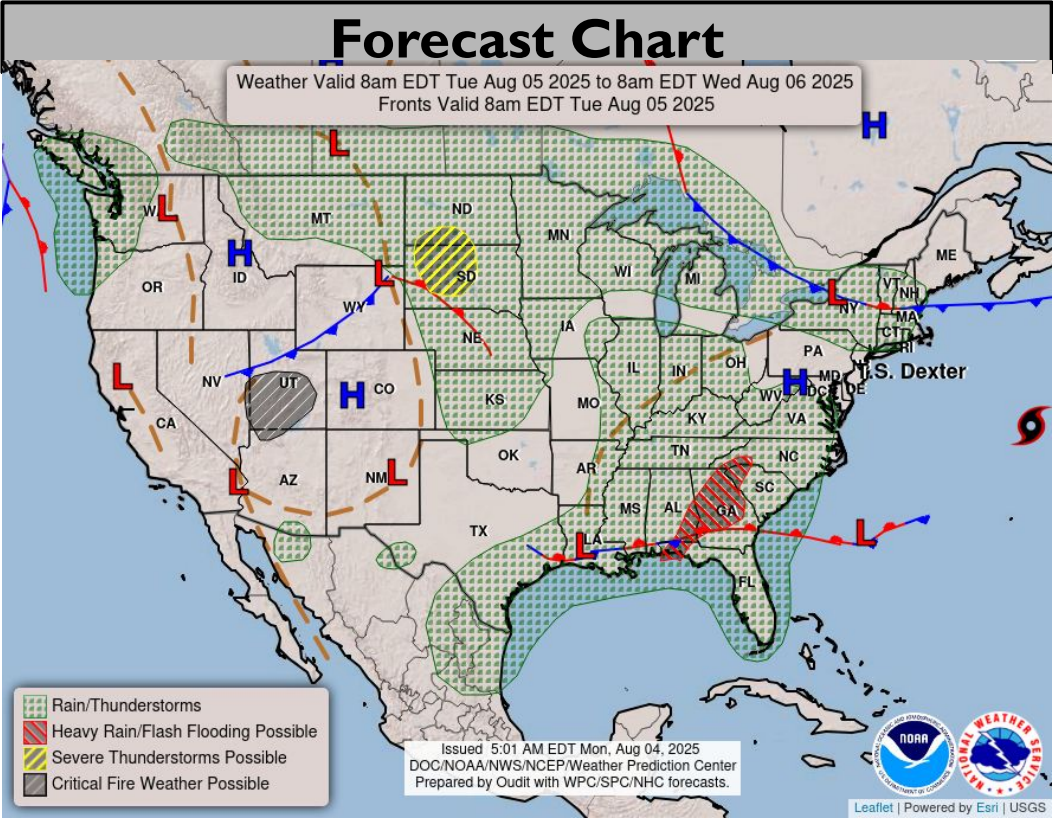


Little to None	No Flash Flood Threat
Minor (level 1 of 4)	Slight Risk of Flash Flooding
Moderate (level 2 of 4)	Probability of Flash Flooding Issuance 40% to 60%
Major (level 3 of 4)	Flood Watch Issued OR Debris Flow Probability > 50%
Extreme (level 4 of 4)	Life Threatening Flash Flooding Likely - Historic Type Day
<ul style="list-style-type: none"><li>WPC's Excessive Rainfall Outlook is <i>Not Applicable</i> to burn scars.</li><li>*Note* 2nd year burn scars can be <u>more dangerous</u> than year 1.</li></ul>	

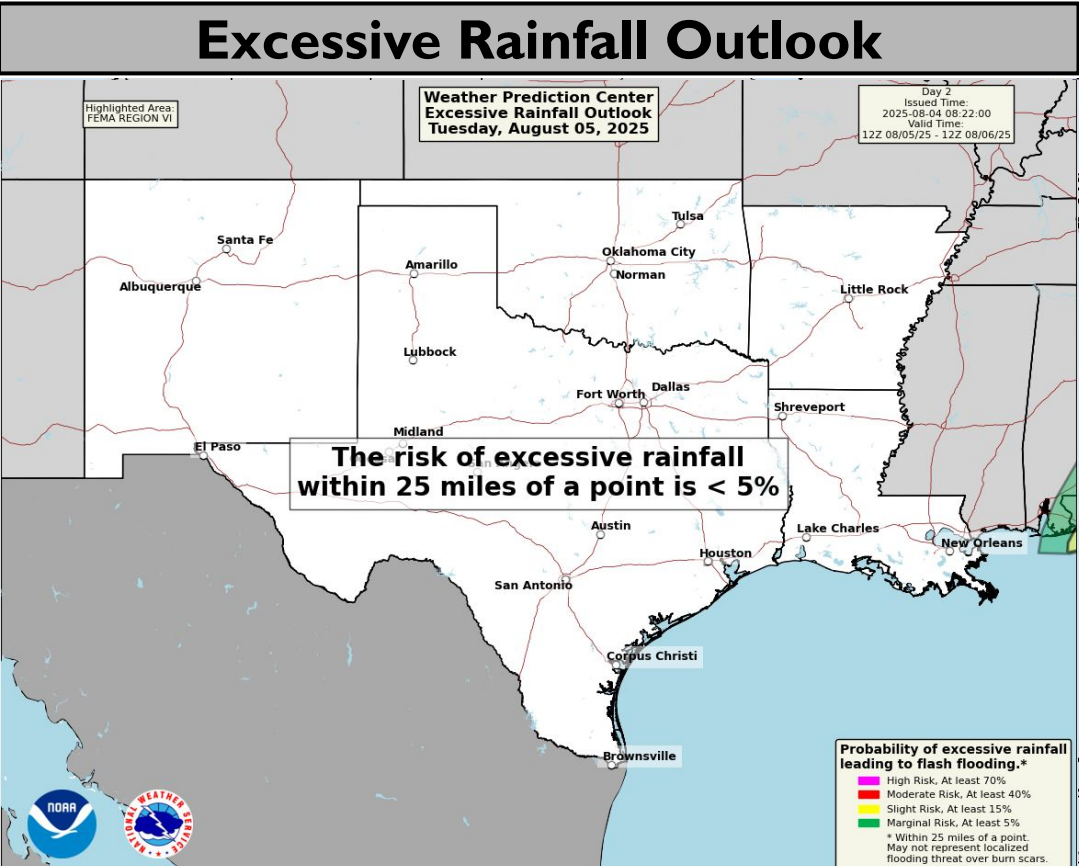
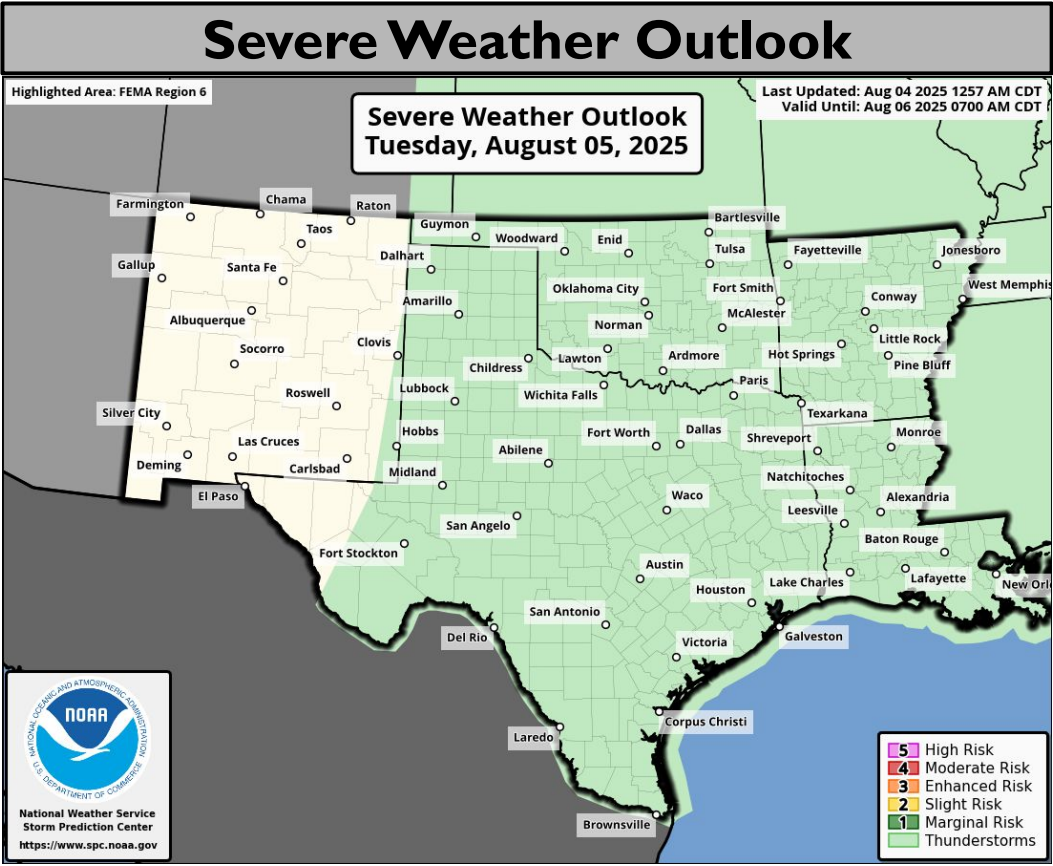




# Tomorrow's Weather



**Heat Risk across C-SW TX, E NM.**



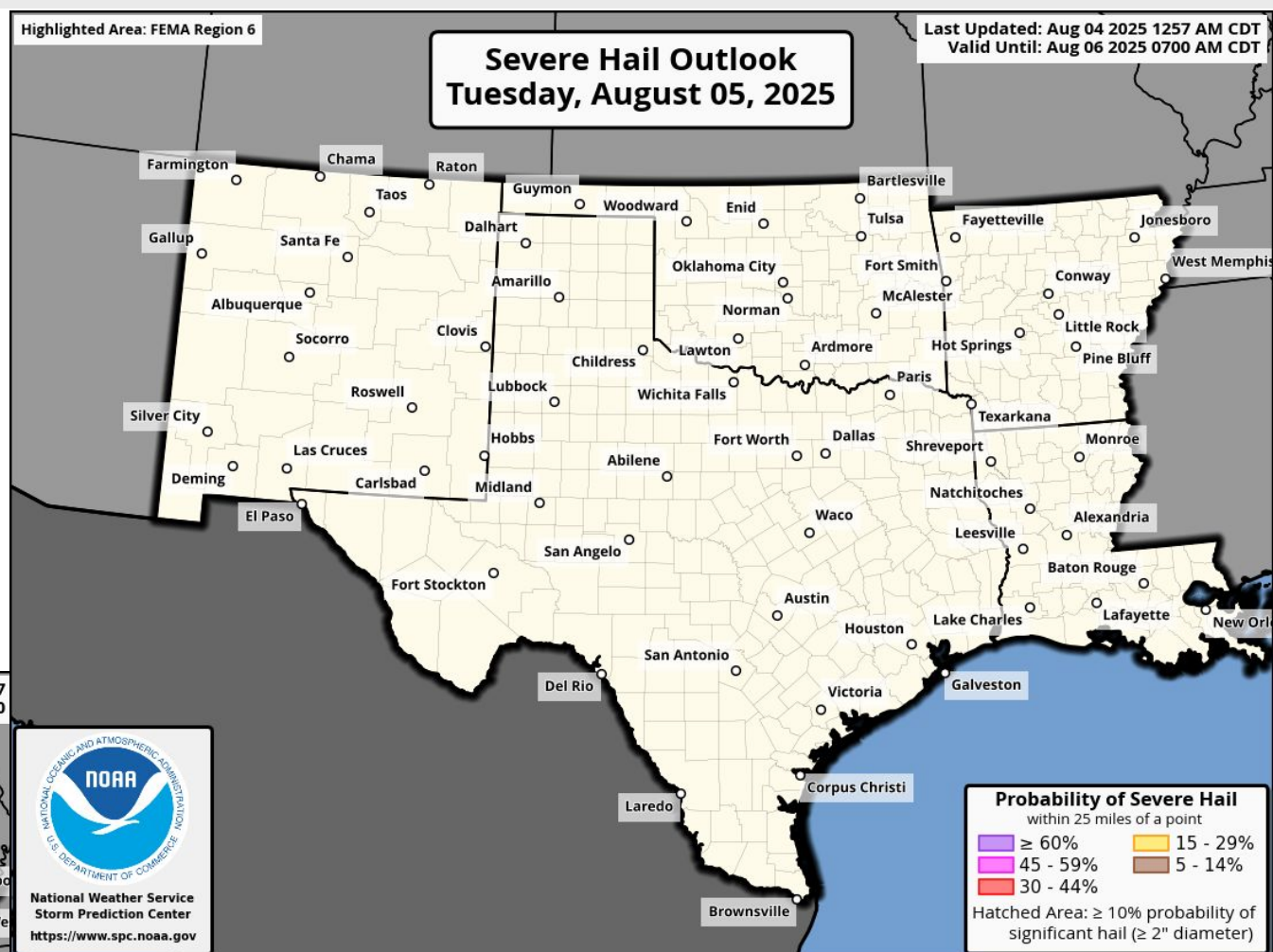
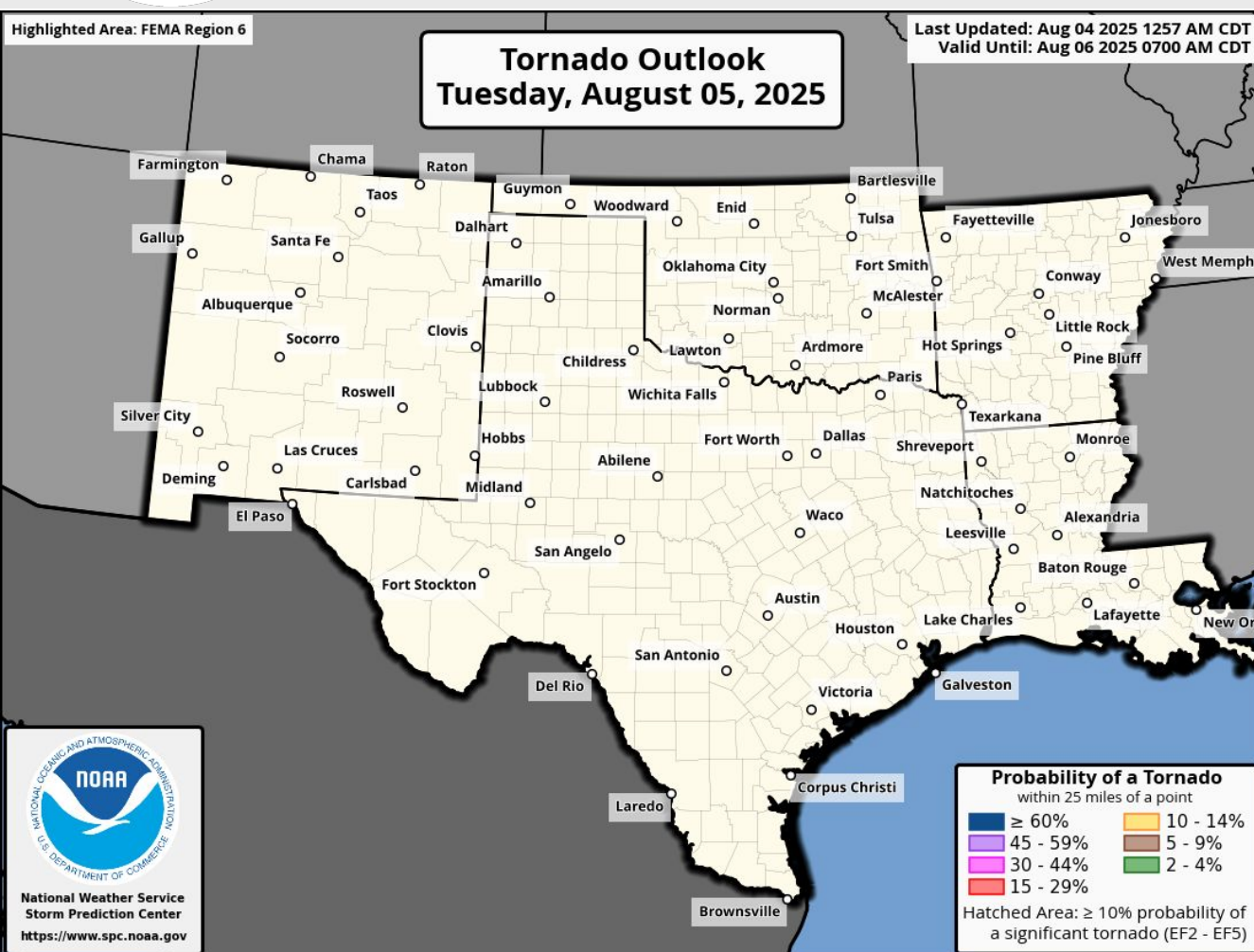
***\*Burn Scar Flash Flooding information on Burn Scar Matrix slides\****







# Tomorrow's Tornado & Severe Wind / Hail Probabilities

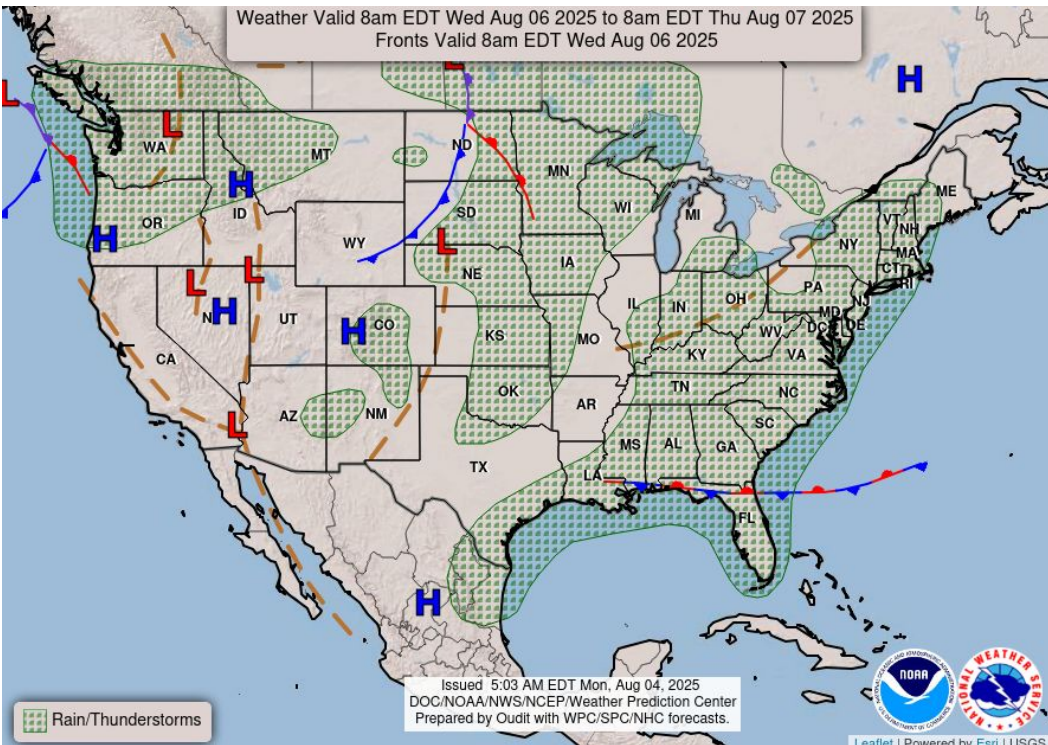




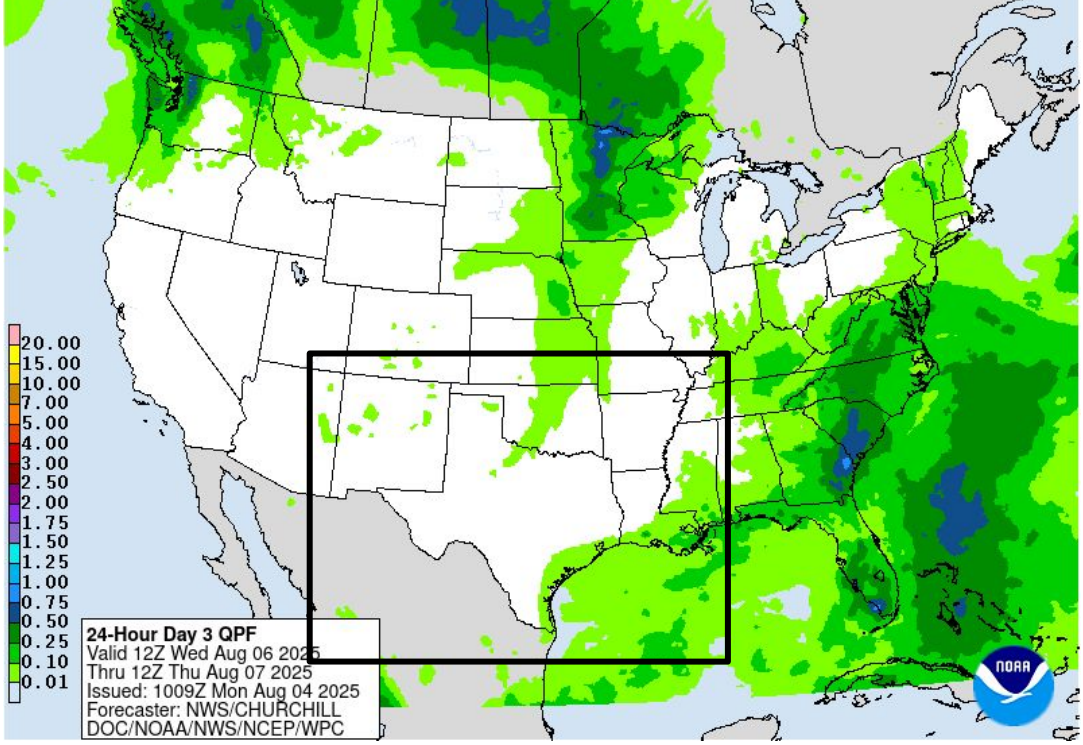


# Wednesday's Weather

## Forecast Chart

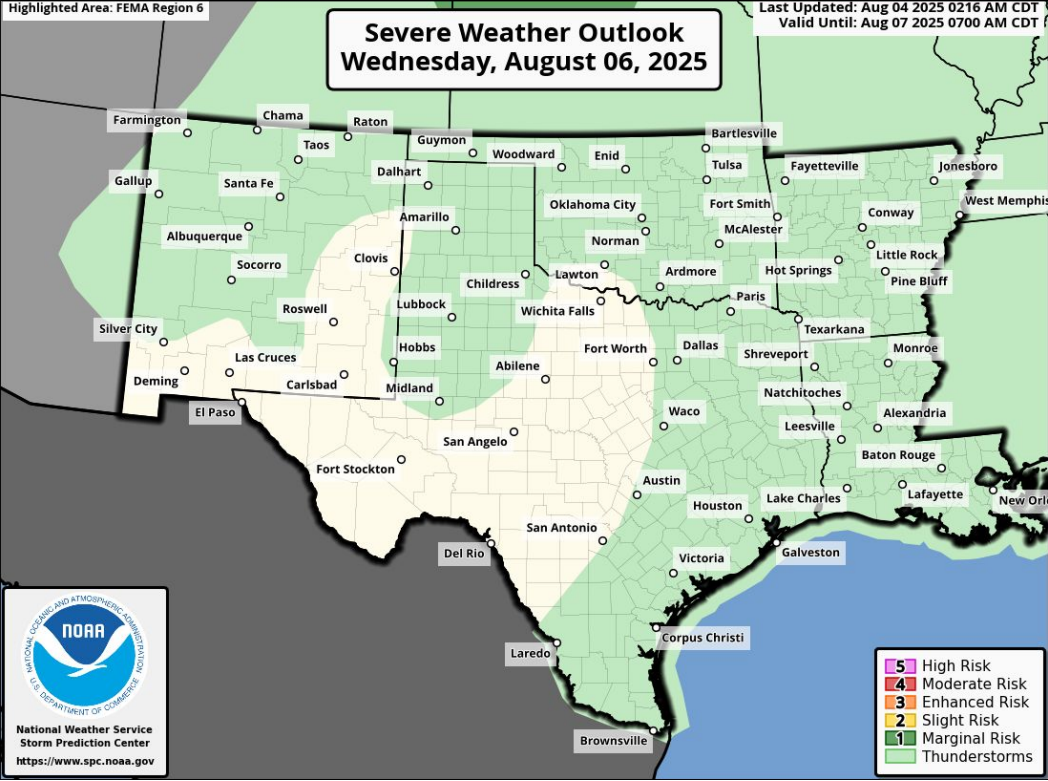


## Forecast Rainfall

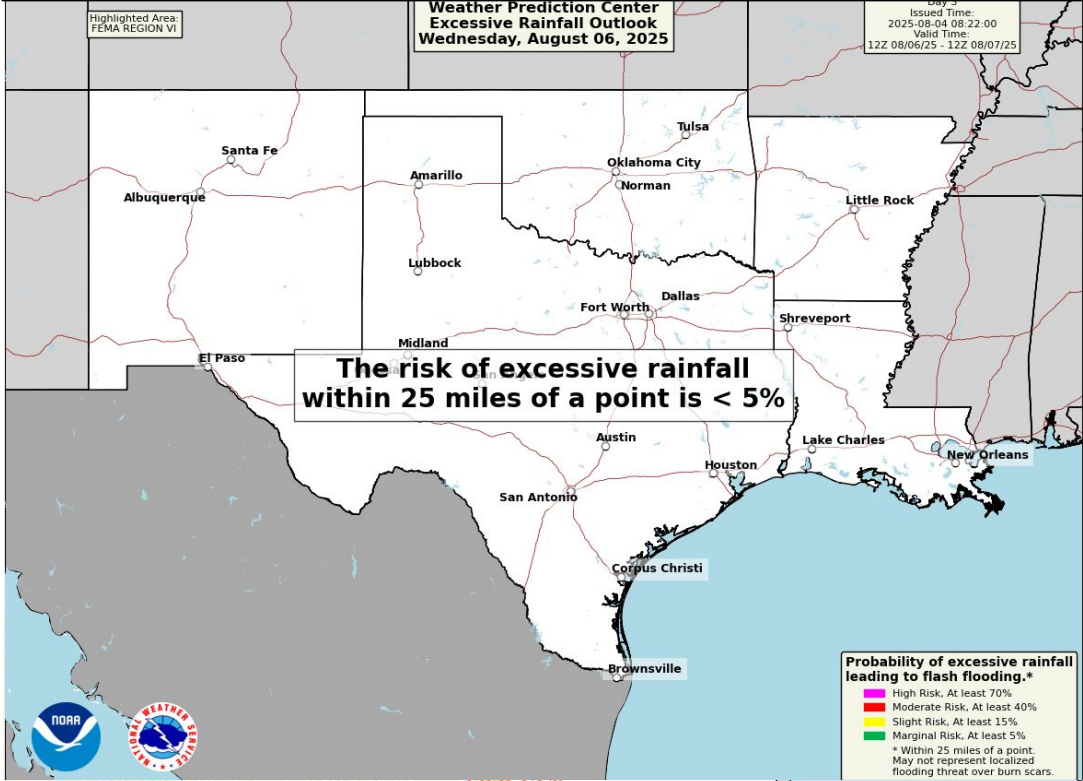


Heat Risk across NM, OK, TX.

## Severe Weather Outlook



## Excessive Rainfall Outlook



*\*Burn Scar Flash Flooding information on Burn Scar Matrix slides\**

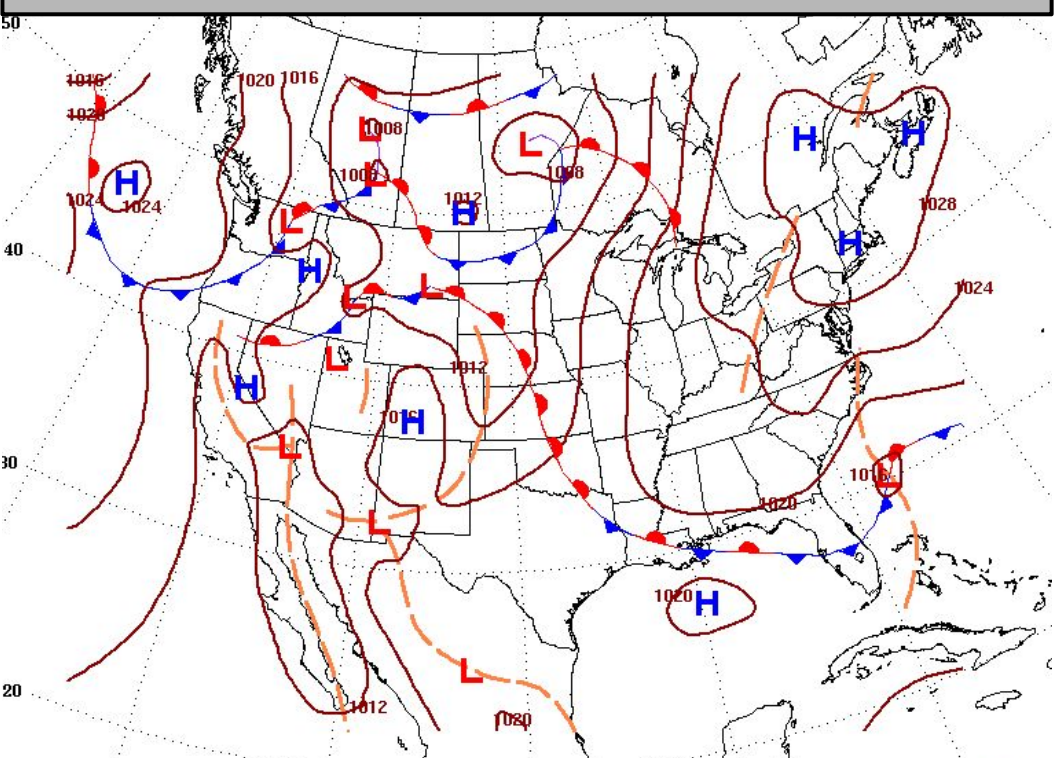




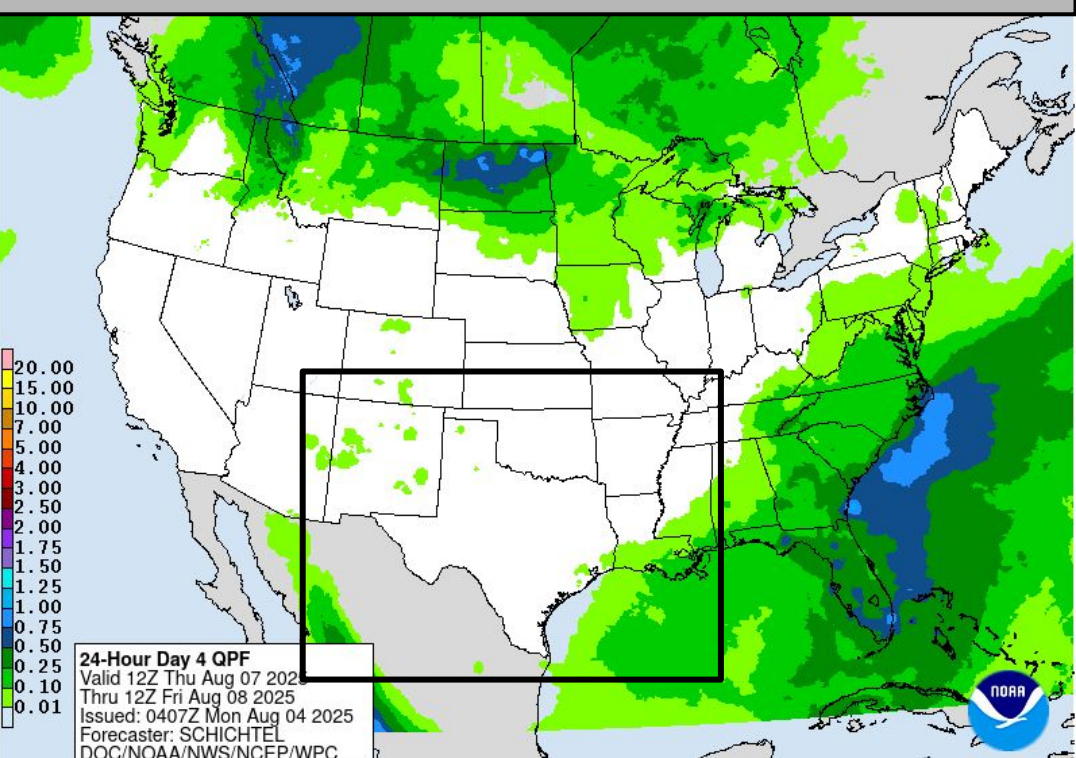


# Thursday's Weather

Forecast Chart

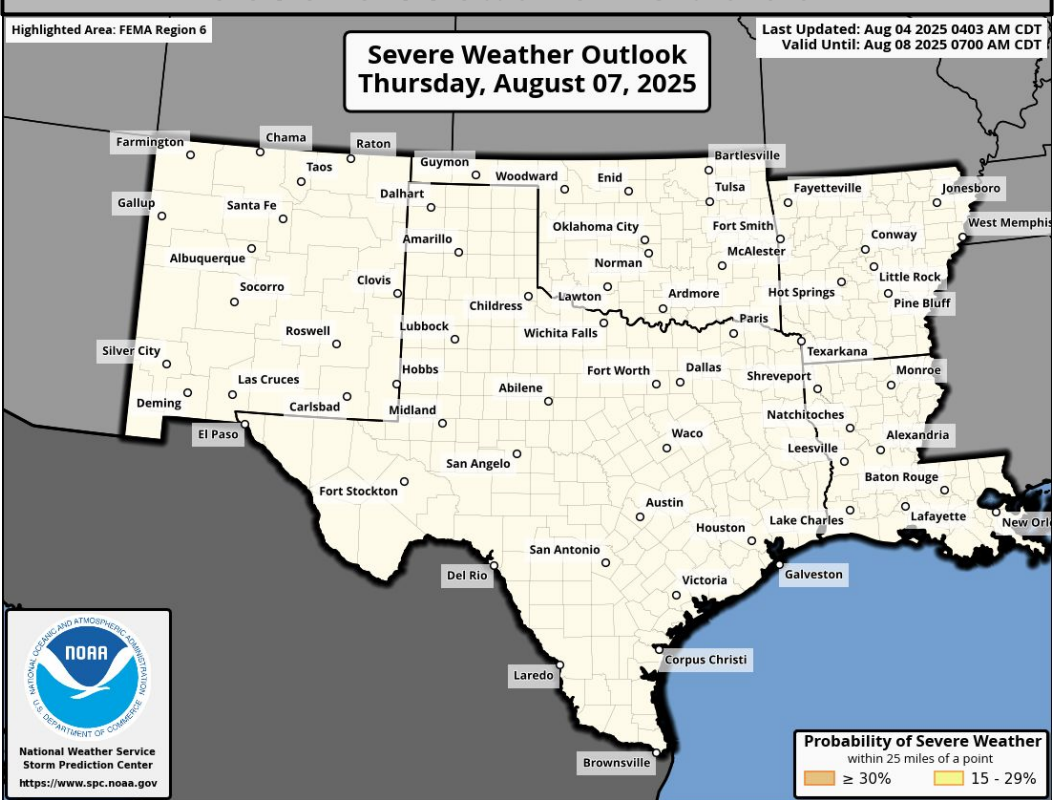


Forecast Rainfall

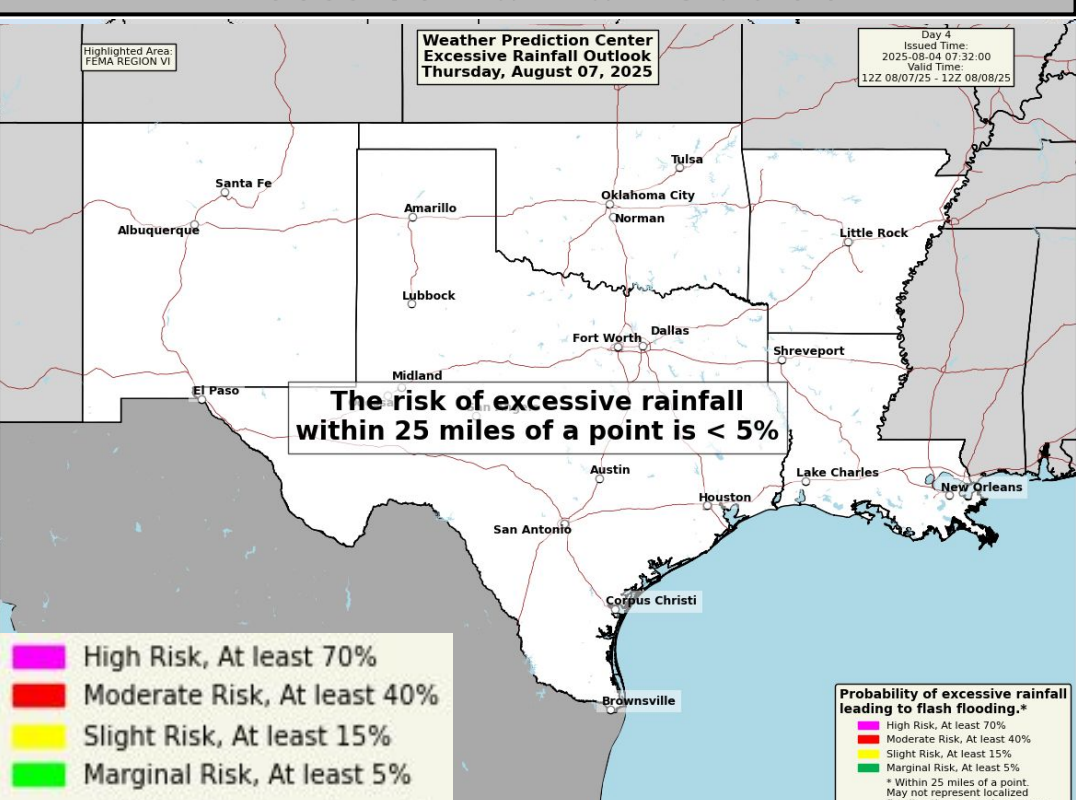


Heat Risk across NM, OK, TX.

Severe Weather Outlook



Excessive Rainfall Outlook



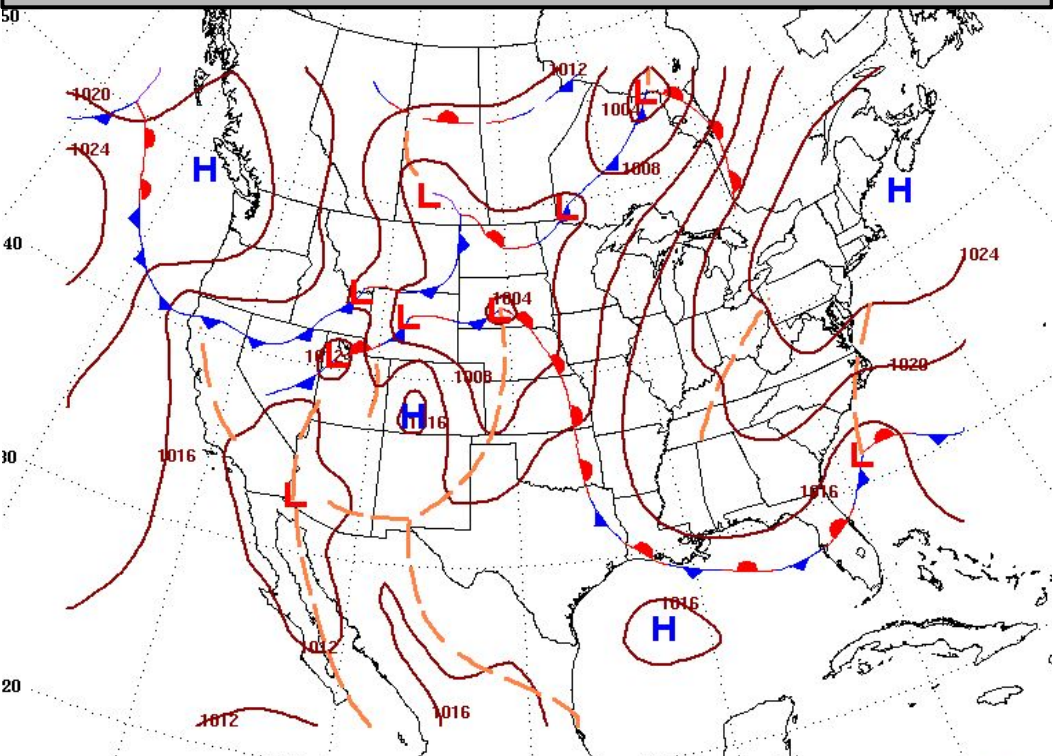
*\*Burn Scar Flash Flooding information on Burn Scar Matrix slides\**



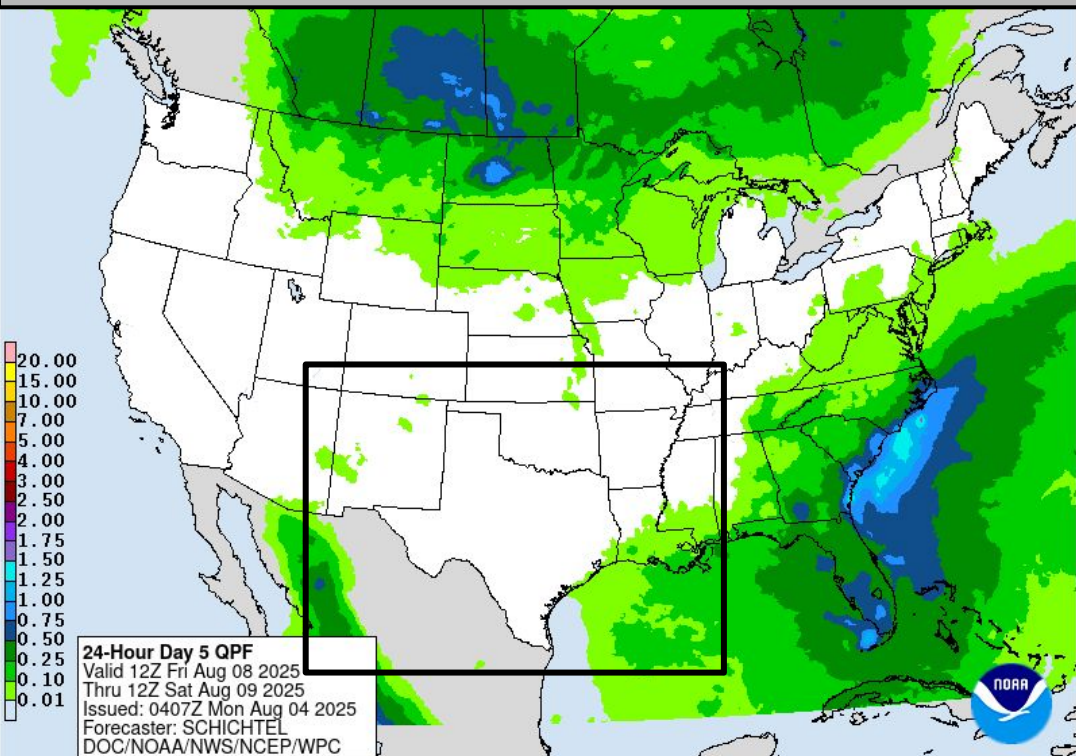


# Friday's Weather

Forecast Chart

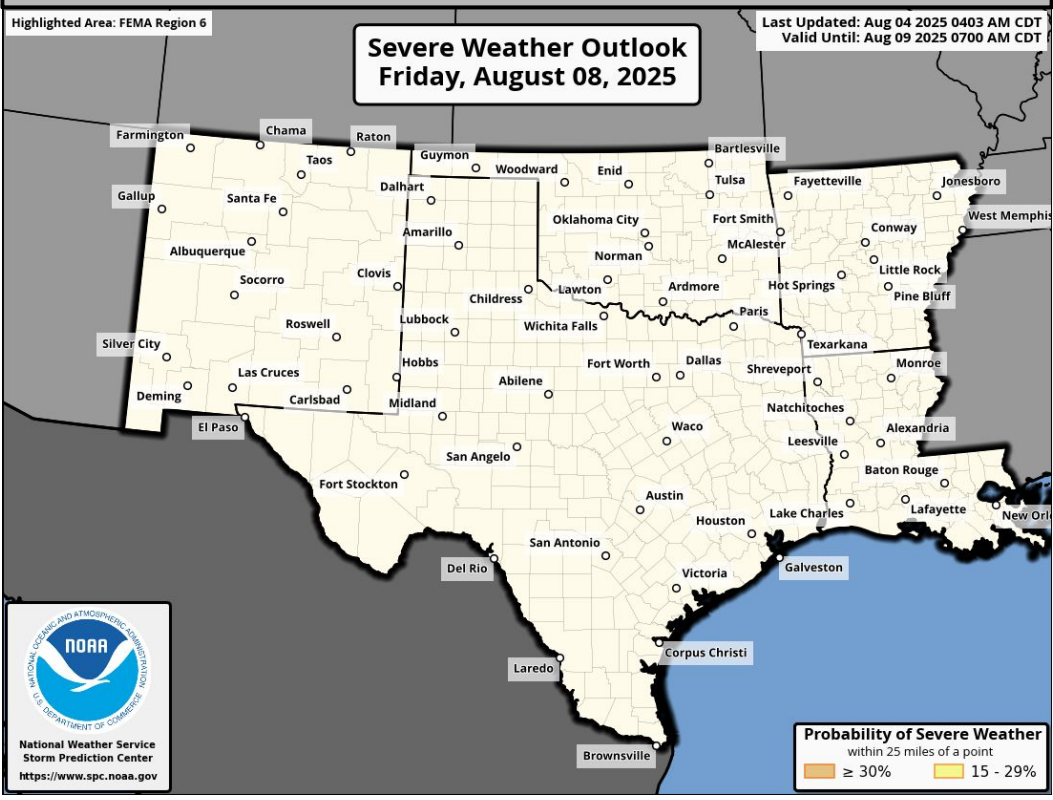


Forecast Rainfall

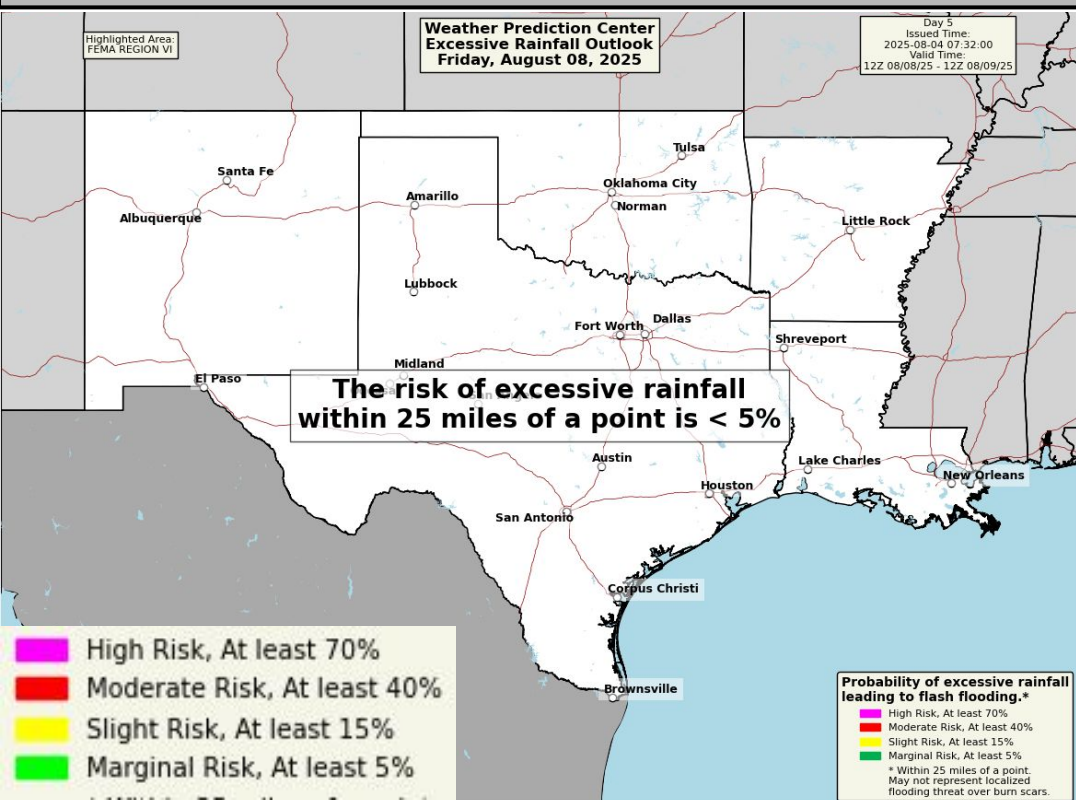


Heat Risk across NM, OK, TX.

Severe Weather Outlook



Excessive Rainfall Outlook

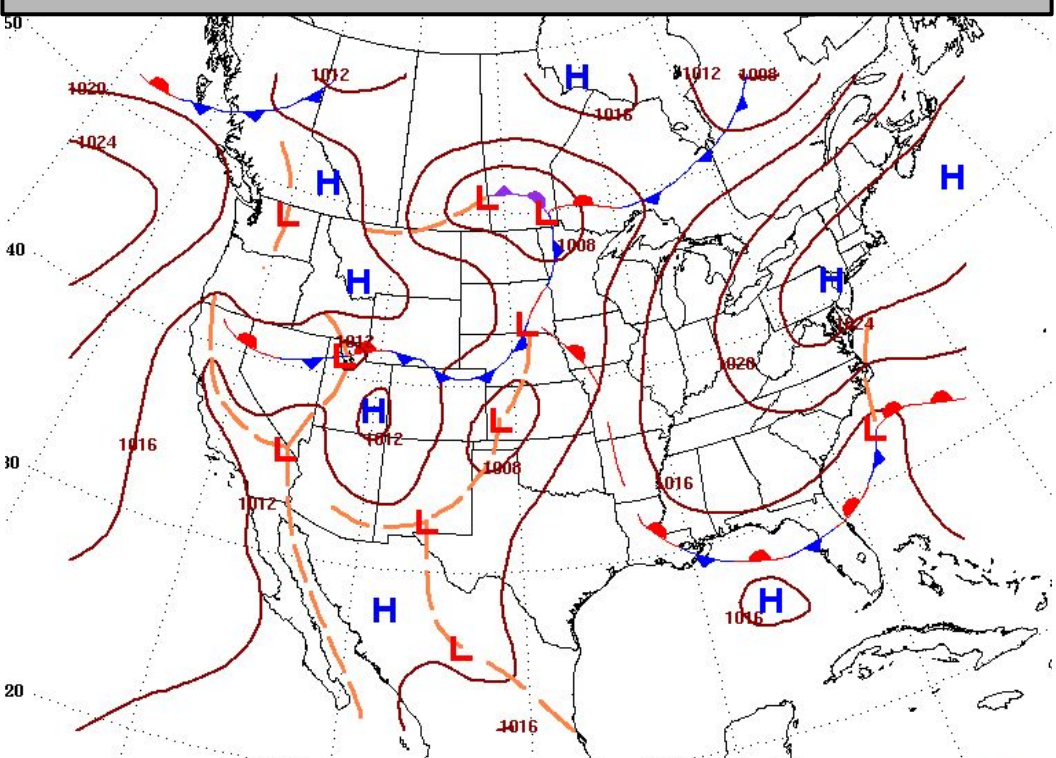




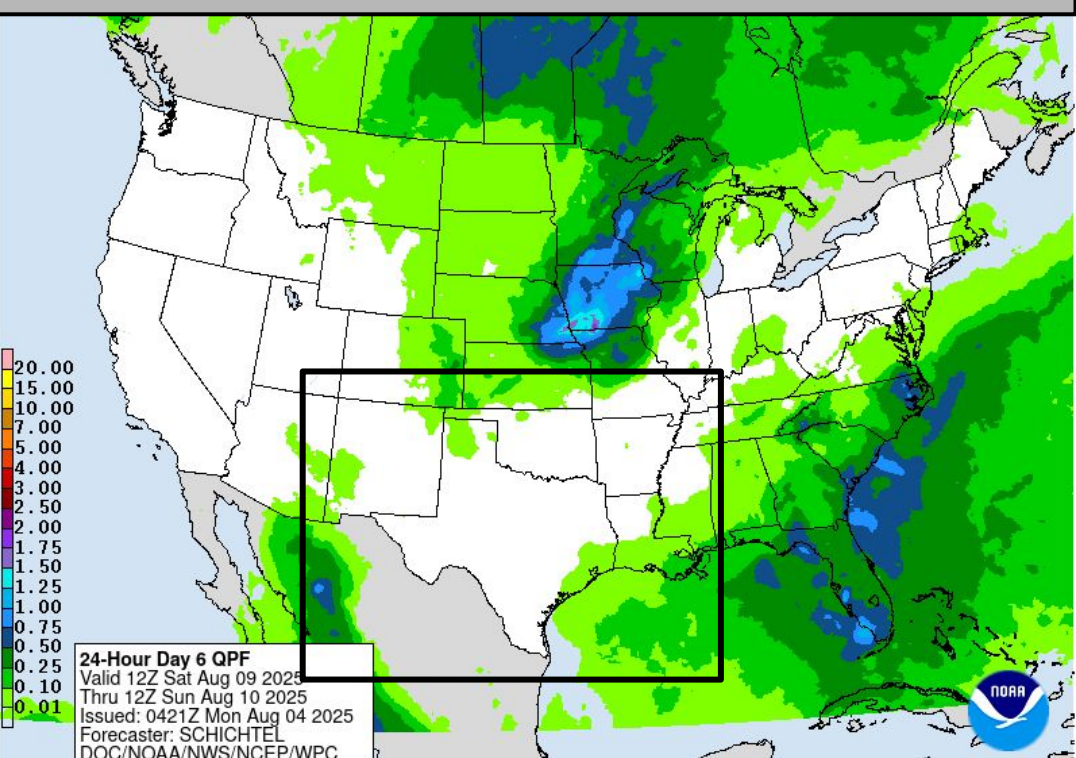


# Saturday's Weather

Forecast Chart

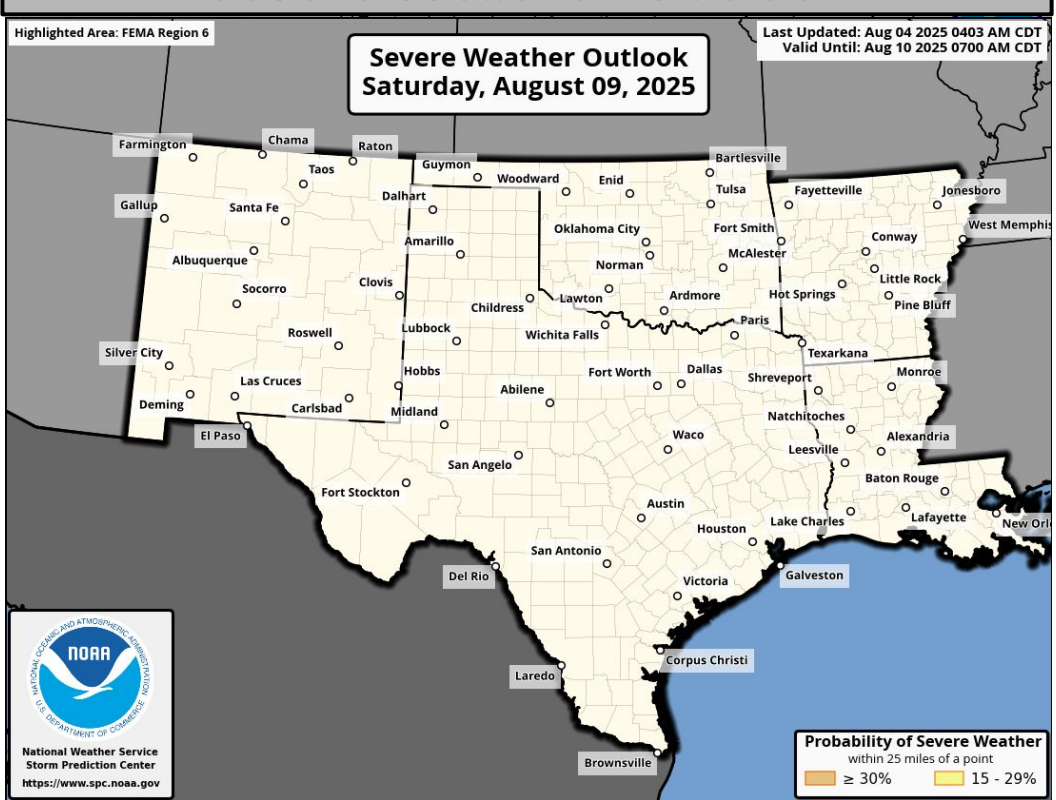


Forecast Rainfall



Heat Risk across NM, OK, TX.

Severe Weather Outlook



Excessive Rainfall Outlooks not available beyond Day 5

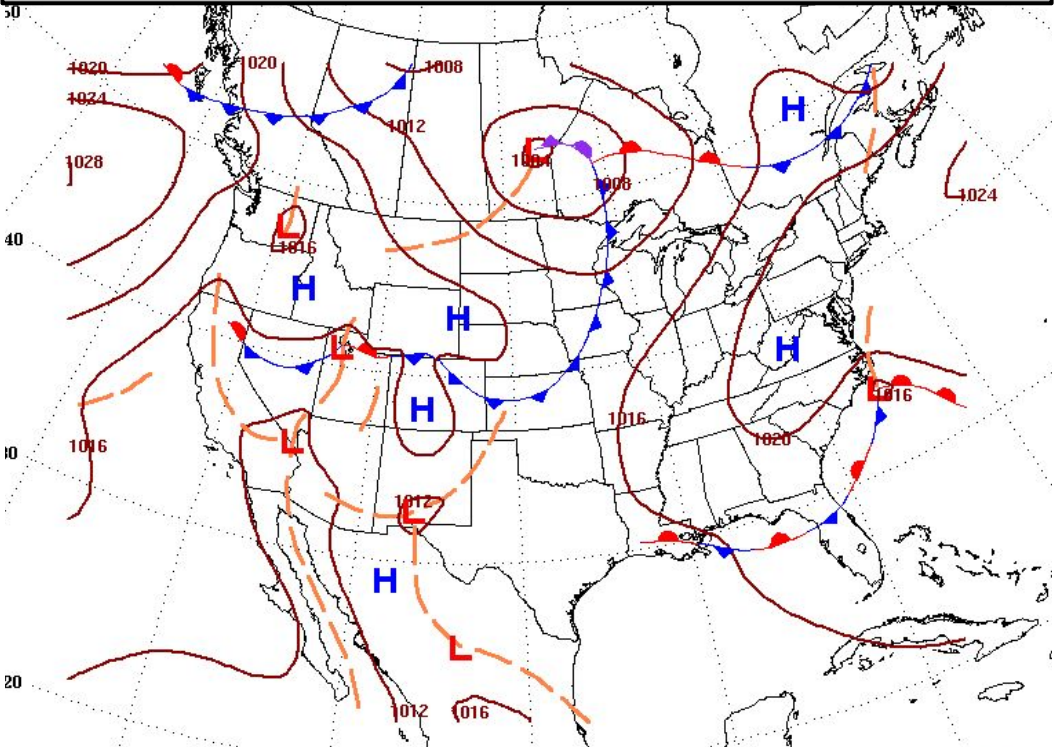




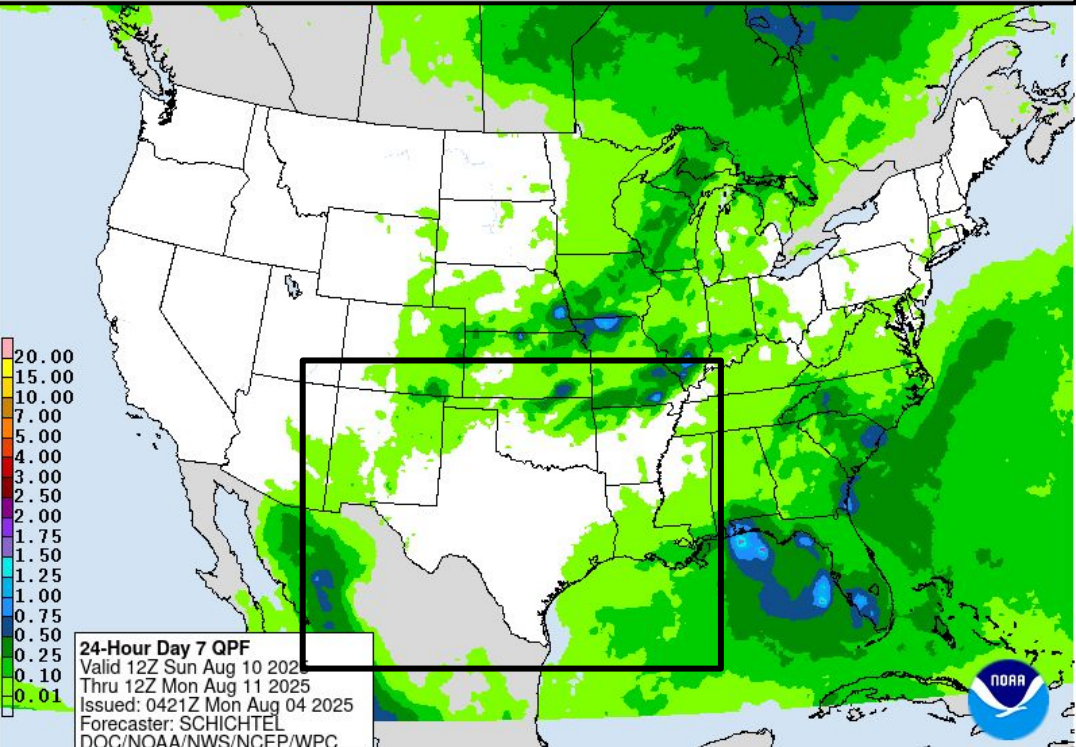


# Sunday's Weather

Forecast Chart

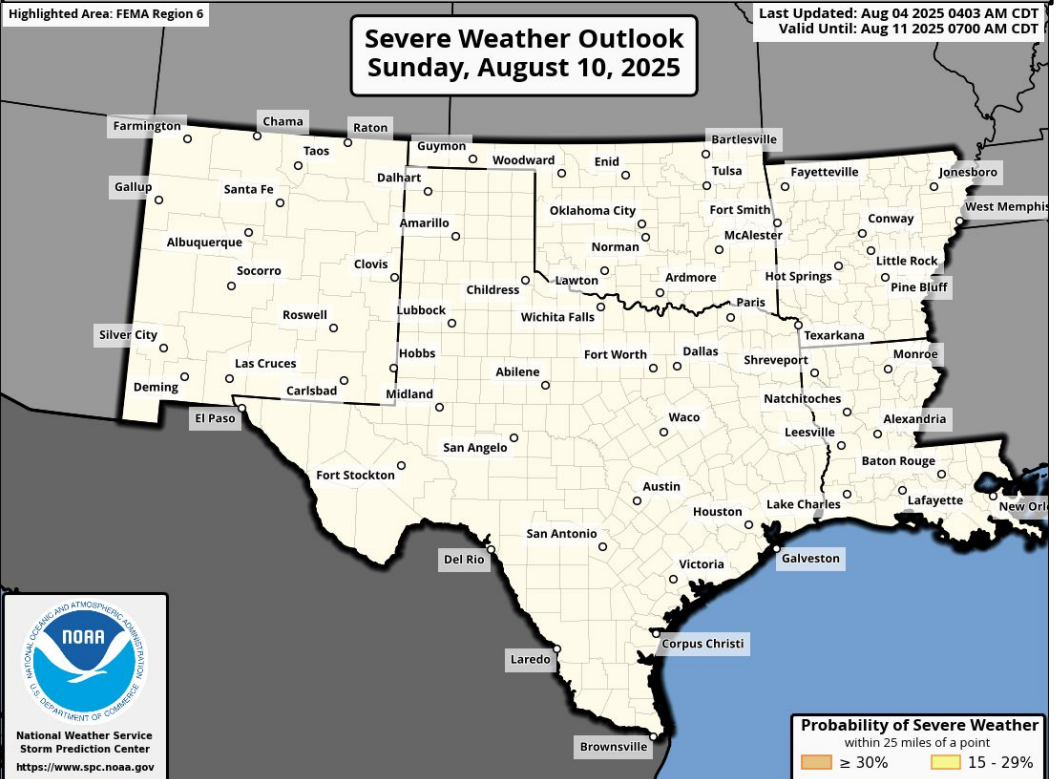


Forecast Rainfall



**Heat risk in NM, OK, TX.**

Severe Weather Outlook



**Excessive Rainfall Outlooks not available beyond Day 5**

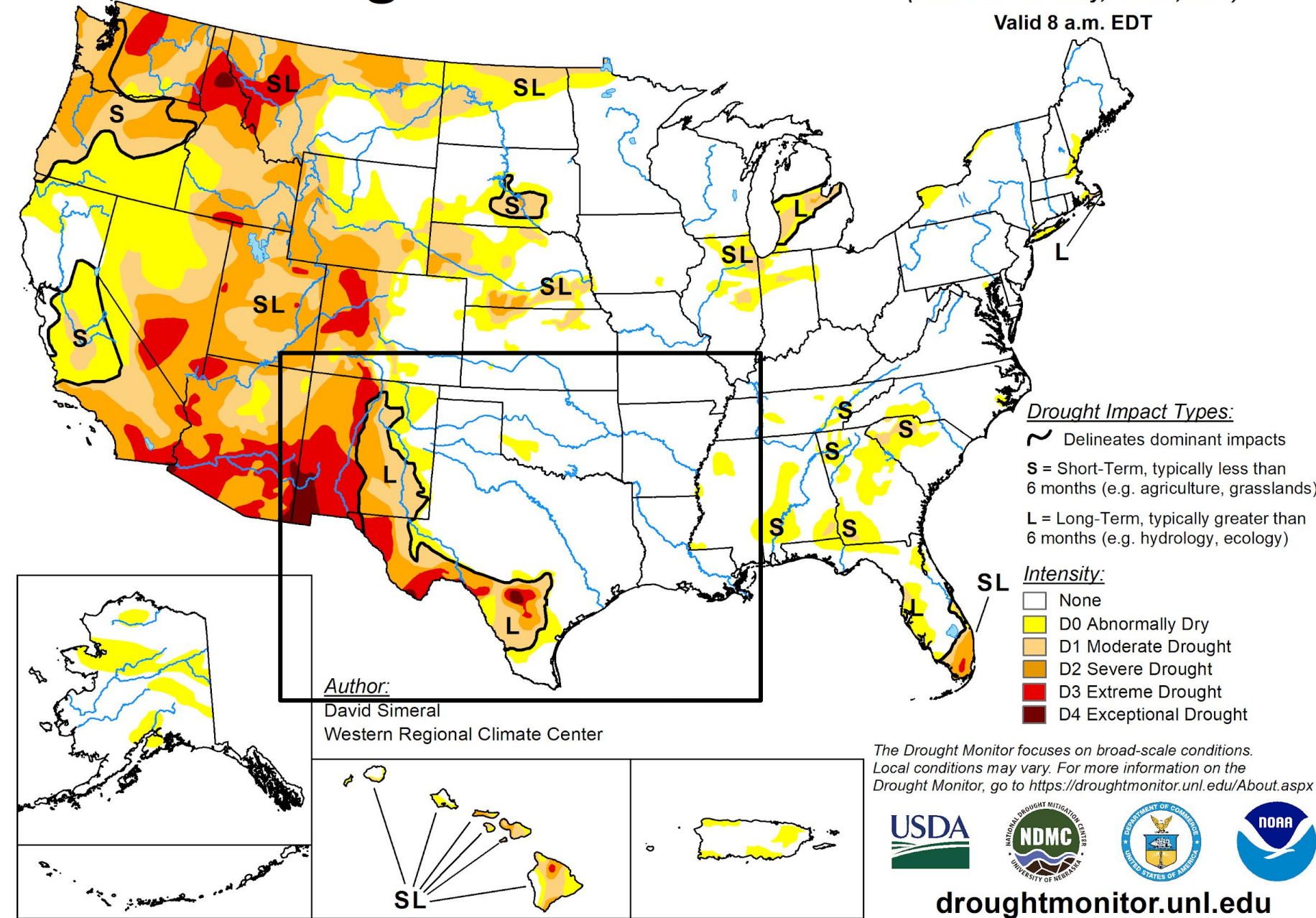




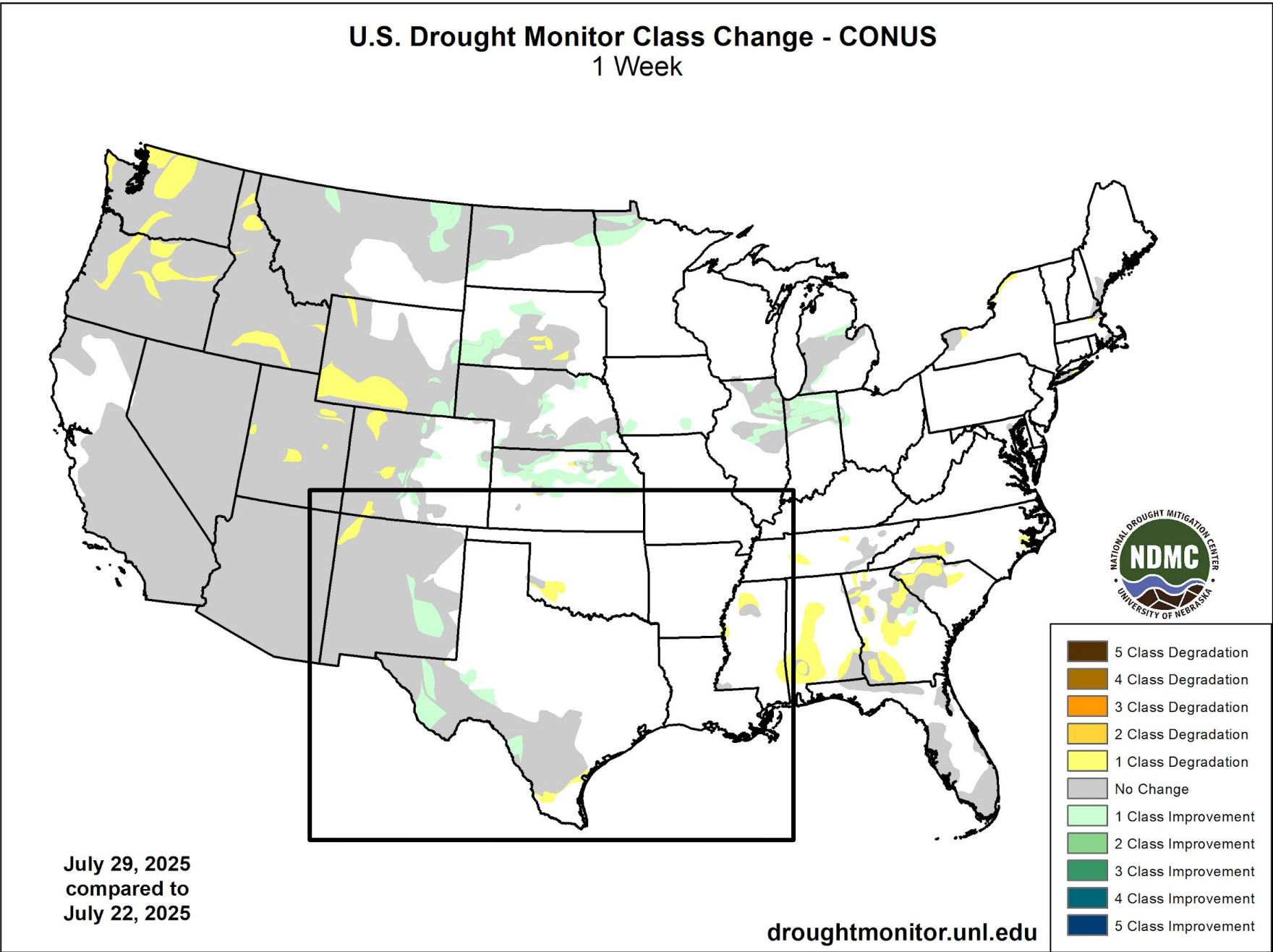
# Drought Monitor

## U.S. Drought Monitor

July 29, 2025  
(Released Thursday, Jul. 31, 2025)  
Valid 8 a.m. EDT



## U.S. Drought Monitor Class Change - CONUS 1 Week

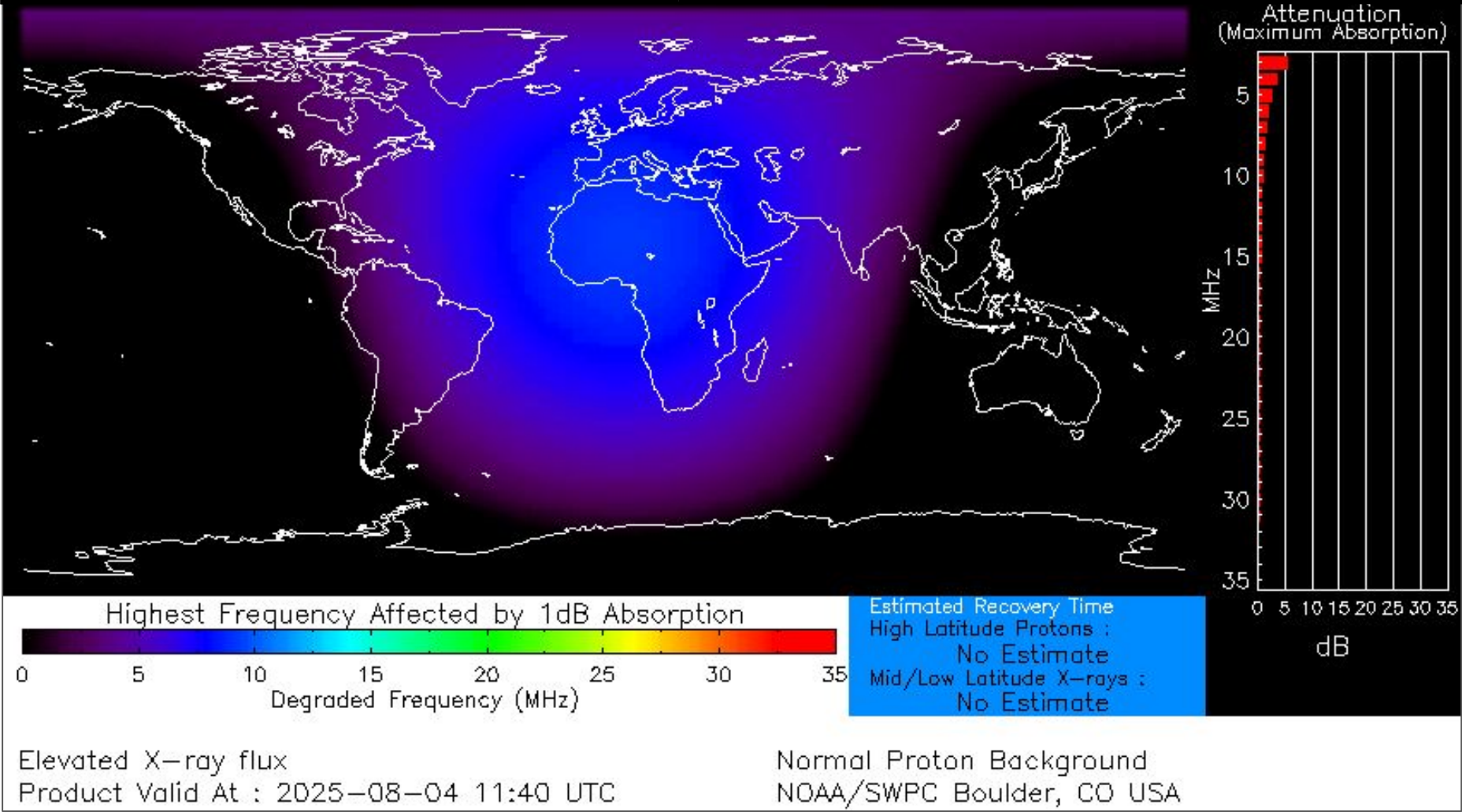






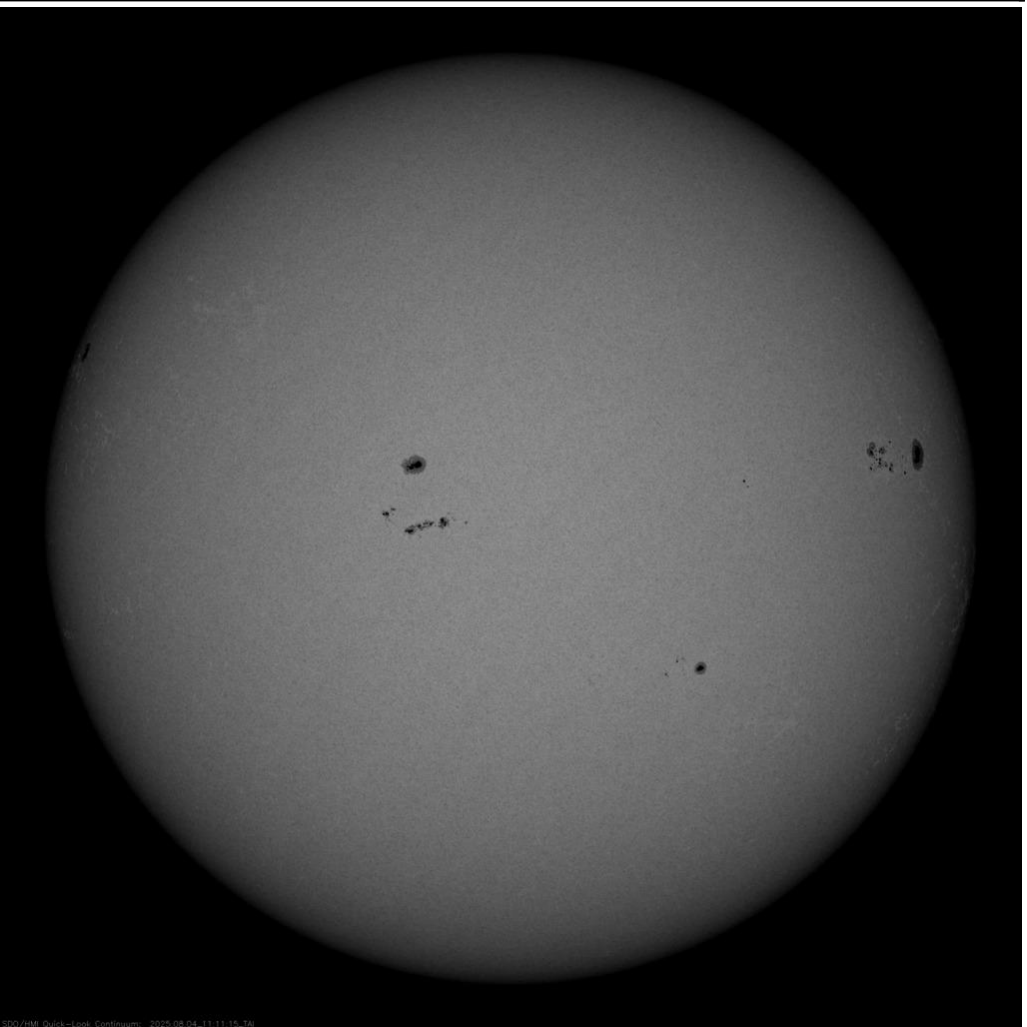
# Space Weather 3-Day Forecast

	Monday, Aug 4	Tuesday, Aug 5	Wednesday, Aug 6
Geomagnetic Storms	Quiet (Max Kp = 2)	Unsettled (Max Kp = 3)	Unsettled (Max Kp = 3)
Solar Radiation Storm (S1-S5)	1%	1%	1%
Radio Blackout (R1-R2)	40%	40%	40%
Radio Blackout (R3-R5)	5%	5%	5%



[Description of the Space Weather Storm Scales](#)

[Latest 3-Day Space Weather Forecast](#)





Weather “Threat” Matrix for FEMA Region VI			
Color	Definition	Criteria	Example(s)
Green	<b>Little to None</b> Safety: Rarely a Direct Threat to Life and Property Impact Potential: Typically Results in Little Inconvenience to Daily Routines	Severe: Marginal Risk from SPC Flooding: Minor flooding expected over localized areas Tropical: None Fire Weather: No Watches/Warnings, fuel moisture above 10% or green up active	<ul style="list-style-type: none"> <li>Thunderstorms expected over LA this afternoon; a few may produce winds to knock down a few trees</li> <li>Something that happens almost every day in a particular season such as seabreeze storms in coastal TX</li> </ul>
Yellow	<b>Minor</b> Safety: Rarely a Direct Threat to Life and Property Impact Potential: Typically Results in Some Inconvenience to Daily Life	Severe: Slight Risk from SPC Flooding: Nuisance flooded expected for a widespread area, or Minor flooding expected over isolated areas Tropical: A weak tropical wave expected to move towards or near any coastline Fire Weather: Red Flag Watches/Warnings and/or SPC outlines enhanced or critical fire outlook	<ul style="list-style-type: none"> <li>2-3 inches of rainfall expected over central AR today and tonight; some minor (brief) street flooding possible</li> <li>Scattered severe storms possible, one or two tornadoes expected, along with reports of strong winds/wind damage and ~1” hail</li> </ul>
Orange	<b>Moderate</b> Safety: Often Threatening to Life and Property, Some Damage Unavoidable Impact Potential: Typically Results in Minor Disruption to Daily Life	Severe: Enhanced Risk from SPC Flooding: Minor flooding expected over a widespread area (including urban locations), or Moderate flooding expected over isolated areas Tropical: A Tropical Storm expected to move towards or near any coastline Fire: Critical fire outlook for more than 2 consecutive days, Warnings for 2 or more consecutive days, D3-D4 drought conditions	<ul style="list-style-type: none"> <li>A snow/sleet mix is expected to move through or near the DFW area tomorrow morning; travel impacts likely</li> <li>Numerous severe storms possible, a few tornadoes possible along with several reports of wind damage along with damaging hail</li> <li>Some large fires reported, burn bans advertised, critical conditions expected</li> </ul>
Red	<b>Major</b> Safety: Extensive Property Damage Likely, Life Saving Actions Also will be Needed Impact Potential: Will likely result in Large Disruption to Daily Life	Severe: Moderate Risk from SPC Flooding: Moderate flooding expected over a widespread area (including urban locations) Tropical: A Hurricane expected to move towards or near any coastline Fire: Large areas of critical conditions for 2 or more days, Warnings for 3 or more days, Severe to extreme drought	<ul style="list-style-type: none"> <li>A Category 1 hurricane will be moving towards the NW Gulf in the next few days</li> <li>Widespread severe storms likely, strong tornadoes, widespread wind damage, and destructive hail</li> <li>Large fires ongoing throughout the area with critical fire weather conditions expected to continue</li> </ul>
Purple	<b>Extreme</b> Safety: Property Damage Unavoidable, Immediate Action to Save Life will be Needed Impact Potential: Typically Results in Long-Lived Widespread Major Disruption to Daily Life	Severe: High Risk from SPC Flooding: Major flooding expected over a widespread area (including urban locations) Tropical: A Major Hurricane (Cat3 or greater) expected to move towards or near any coastline Fire: Large area of critical conditions for 2 or more days, Warnings for 3 or more days, Long term (months) of severe to extreme drought	<ul style="list-style-type: none"> <li>A Category 4 hurricane is headed towards the SE LA; major storm surge, flooding and damaging winds anticipated to begin tomorrow</li> <li>Widespread severe storms expected, tornado outbreak probable with long-lived, very widespread and particularly intense storms</li> </ul>

Criteria for the color codes in this briefing is to the left, please provide any feedback to [sr-srh.roc@noaa.gov](mailto:sr-srh.roc@noaa.gov)





# National Weather Service

Southern Region Headquarters

Regional Operations Center

Fort Worth, TX



**Phone:** (682) 703-3747



**Facebook:** NWSSouthern



**E-mail:** [sr-srh.roc@noaa.gov](mailto:sr-srh.roc@noaa.gov)



**X:** NWSSouthern



**Web:** [www.weather.gov/srh](http://www.weather.gov/srh)