



FEMA



Prepared by
Melissa Beat

FEMA Region 6 Weather Threat Briefing

Sunday, August 17, 2025

Disclaimer: The purpose of this briefing is to provide a **Regional** weather threat assessment and is meant as a general overview. County/Parish decision makers should consult their local NWS forecast offices for the latest detailed, local weather information. To find your local NWS forecast office, go to www.weather.gov/srh.



National Oceanic and
Atmospheric Administration
U.S. Department of Commerce

National Weather Service
Southern Region



Summary

- **Flash Flooding:** Marginal risk (level 1 of 4) for NM, Far W TX, TX Panhandle today; and NM, Far W Texas through Tuesday. Heavy rain chances may spread throughout FEMA 6 this week.
 - **NM Burn Scars:** Persistent monsoonal activity leads to a Major risk (level 3 of 4) today through Tuesday for the Ruidoso/Sacramento burn scar complex. Back to moderate (level 2 of 4) for both HPCC and Sacramento burn scars by Wednesday.
- **Heat:** Hazardous heat continues across E OK, AR, NE TX, and N LA through Tuesday and easing midweek. Temps feel as hot as 109 degrees.
- **Tropical:** Hurricane Erin will move west/northwest over the next several days and is expected to stay out in the Atlantic Ocean. No impacts to FEMA Region 6.
 - Two disturbances in the Atlantic with low (10%, 20%) chances of development are not expected to bring impacts to FEMA 6 in the next 7 days.





FEMA Region 6 Threat Matrix

Next 7 days

	Sunday, Aug 17	Monday, Aug 18	Tuesday, Aug 19	Wednesday, Aug 20	Thursday, Aug 21	Friday, Aug 22	Saturday, Aug 23
Severe Storms							
Heavy Rain / Flash Flooding	NM, Far W TX, TX Panhandle	NM, Far W TX	NM, Far W TX, N OK, N AR	W NM, TX, SE OK, AR, LA	W NM, TX, S AR, LA	C-E TX, LA	NM
Burn Scars	S NM	S NM	NM	NM			
	N NM	N NM					
Tropical							
Heat	E OK, AR, NE TX, N LA	E OK, AR, NE TX, N LA	E OK, AR, NE TX, N LA	ArkLaTex			
River Flooding							

Threat levels are based on FEMA Region 6 criteria. State or local threat level criteria may differ.
For more details on the colors in the threat matrix refer to the last slide in this briefing.

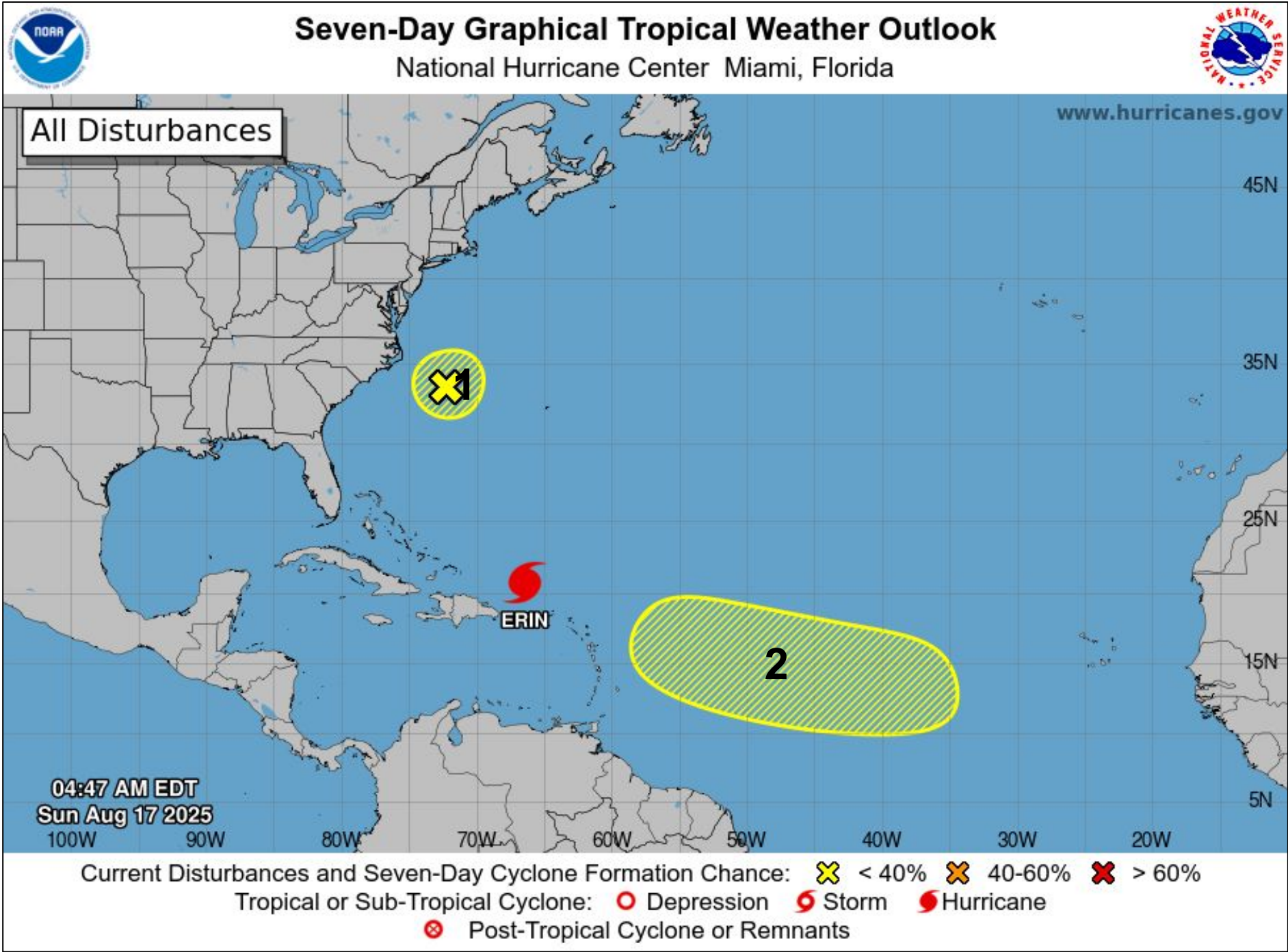
Risk Levels	Little to None	Minor	Moderate	Major	Extreme
-------------	----------------	-------	----------	-------	---------



Tropical Weather Outlook – Atlantic/Gulf

Areas of Possible Development		
Area	Chance of Development	Potential Impacts to FEMA 6
1	Low (10%)	None.
2	Low (20%)	None in the next 7 days.

Active Tropical Cyclones	
Storm	Potential Impacts to FEMA 6
Hurricane Erin	None.



See <http://www.hurricanes.gov> for the latest on the tropics or any active storms

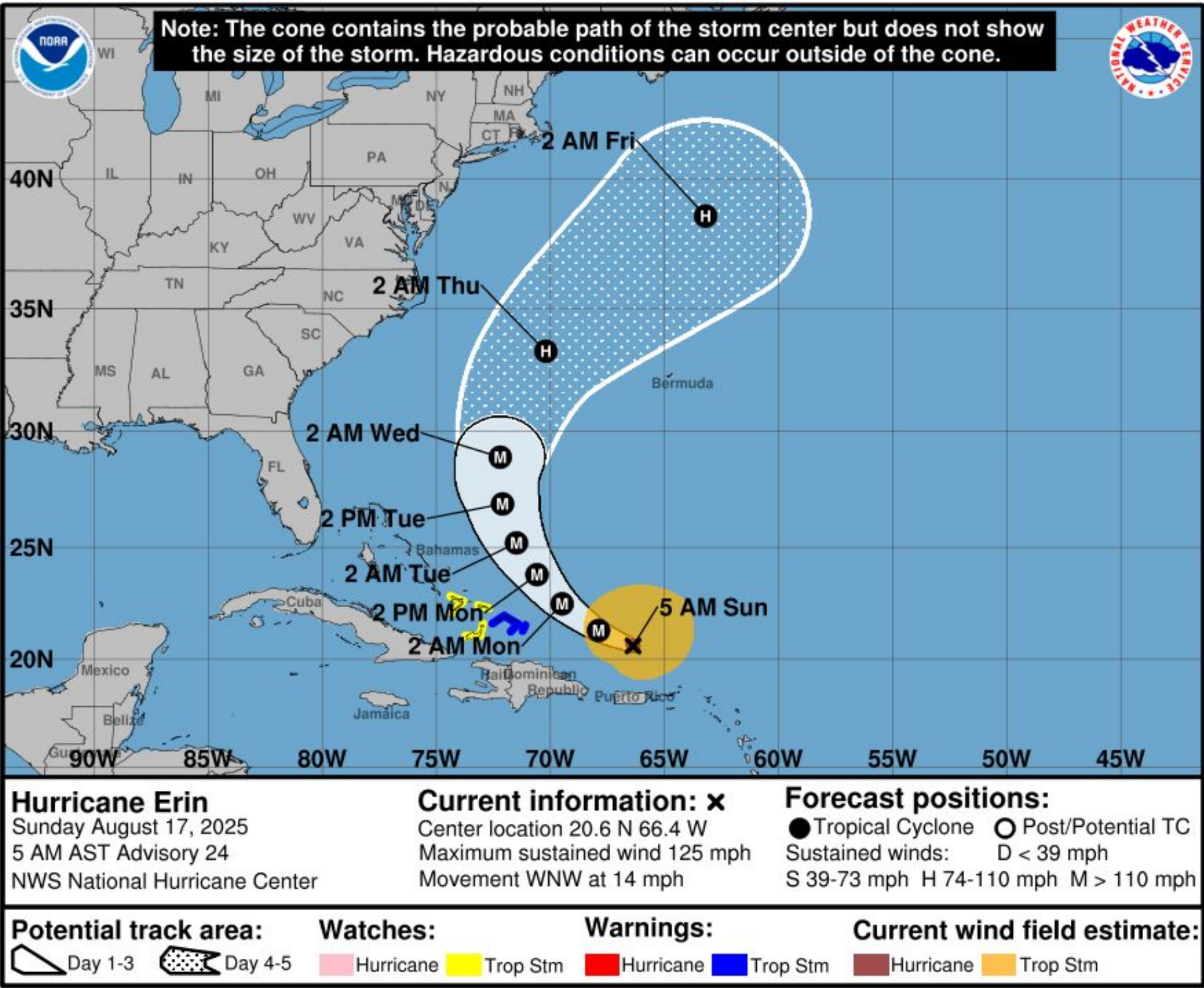




Hurricane Erin

August 17, 2025
1:40 AM

See <http://www.hurricanes.gov> for the latest on the tropics or any active storms



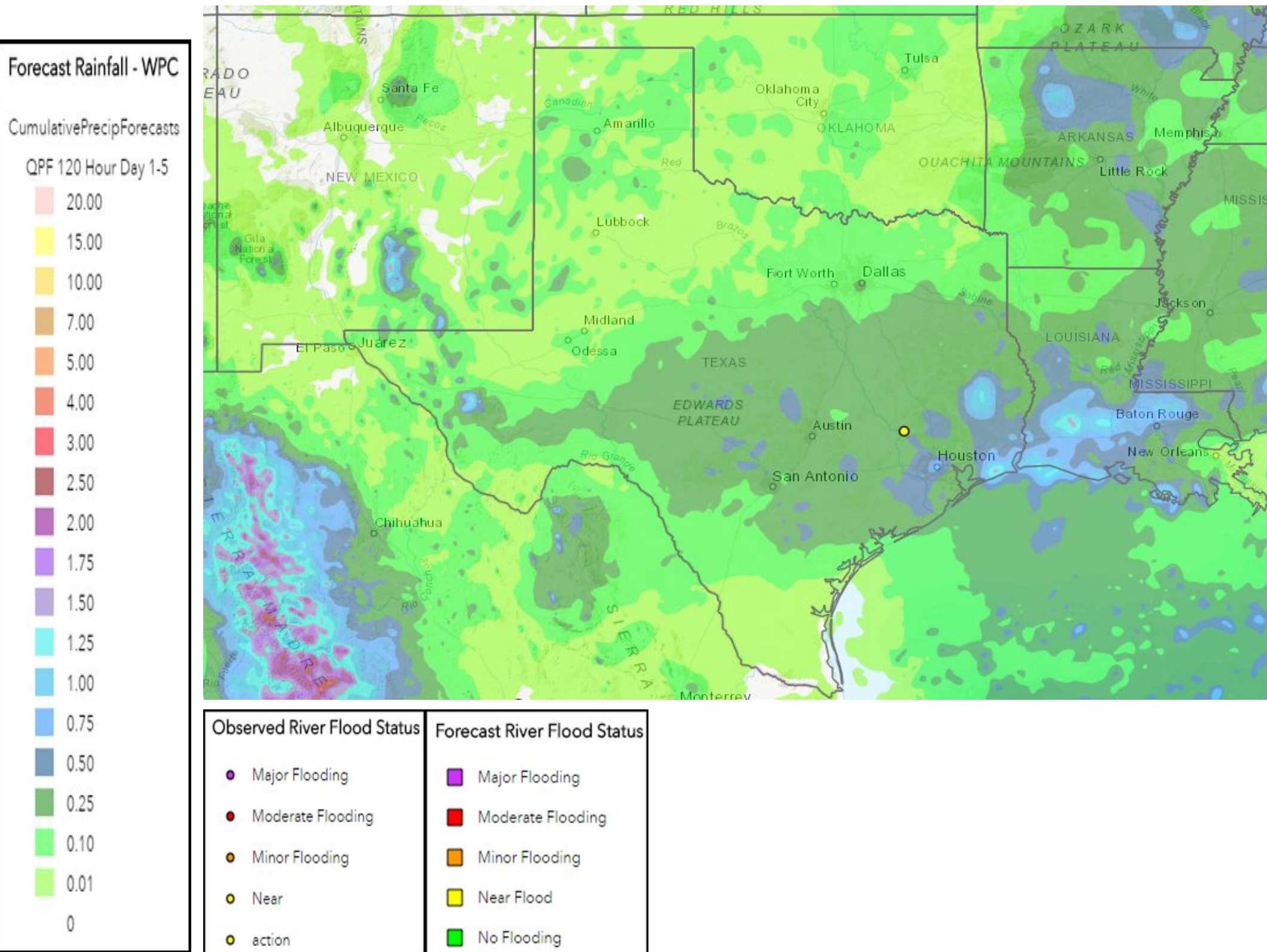
No impacts to FEMA 6 from Hurricane Erin.





5-Day Precipitation Forecast & River Flood Status

Note: Even though the image displays 5 days of forecasted rainfall, river forecasts only include 1-2 days of rainfall



No river significant flooding.

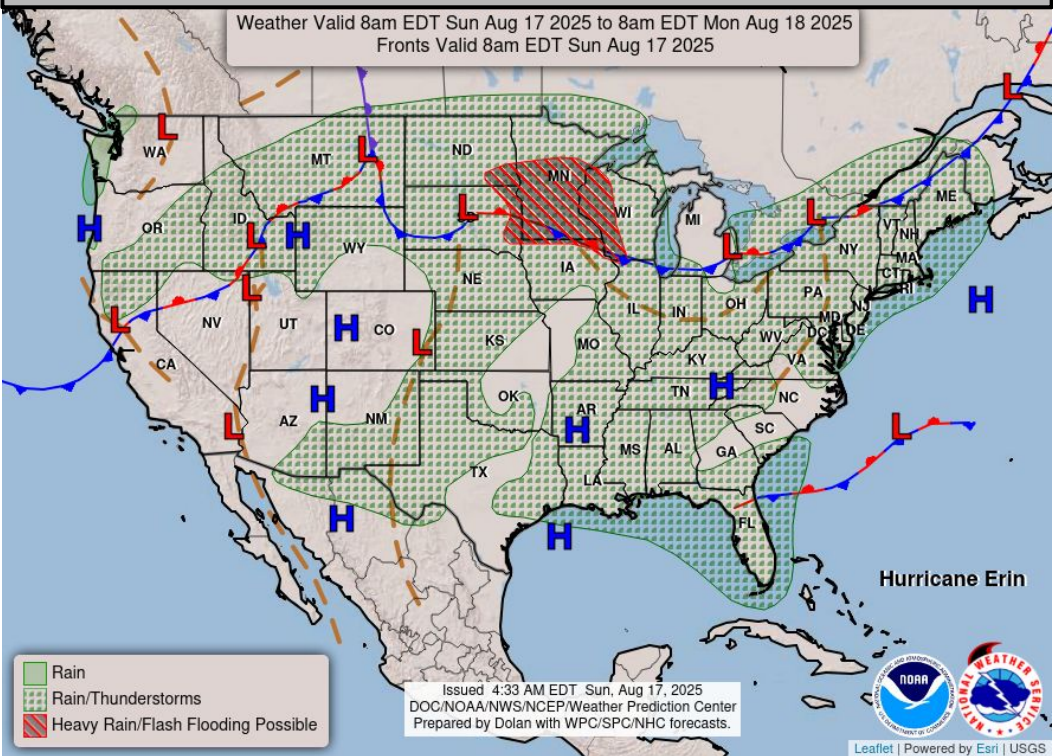
Note: Numerical levels (e.g. level 1 of 4) will not be assigned to riverine flooding due to the varying levels of impacts across flood categories.



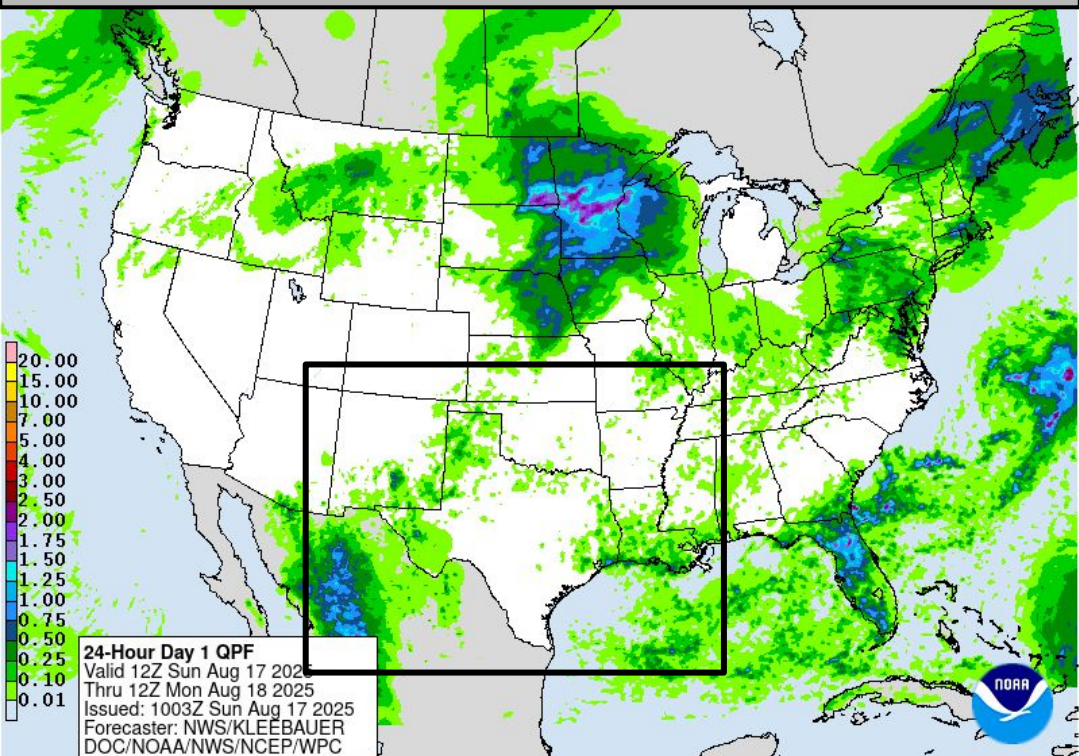


Today's Weather

Forecast Chart



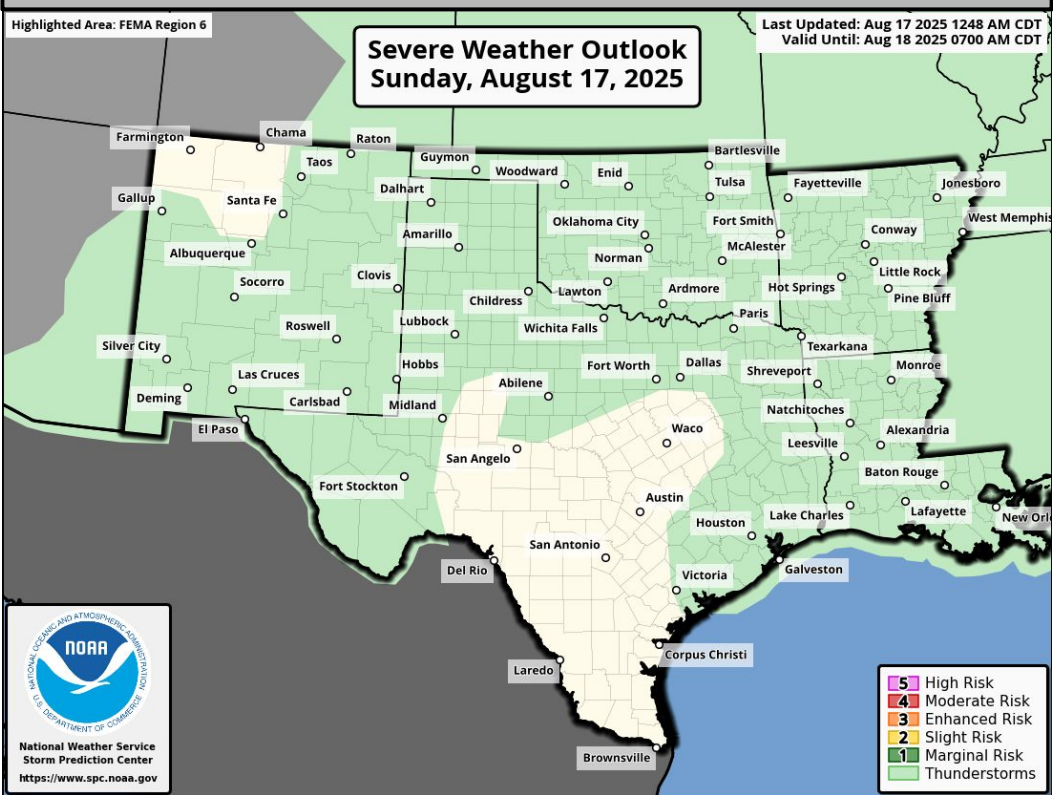
Forecast Rainfall



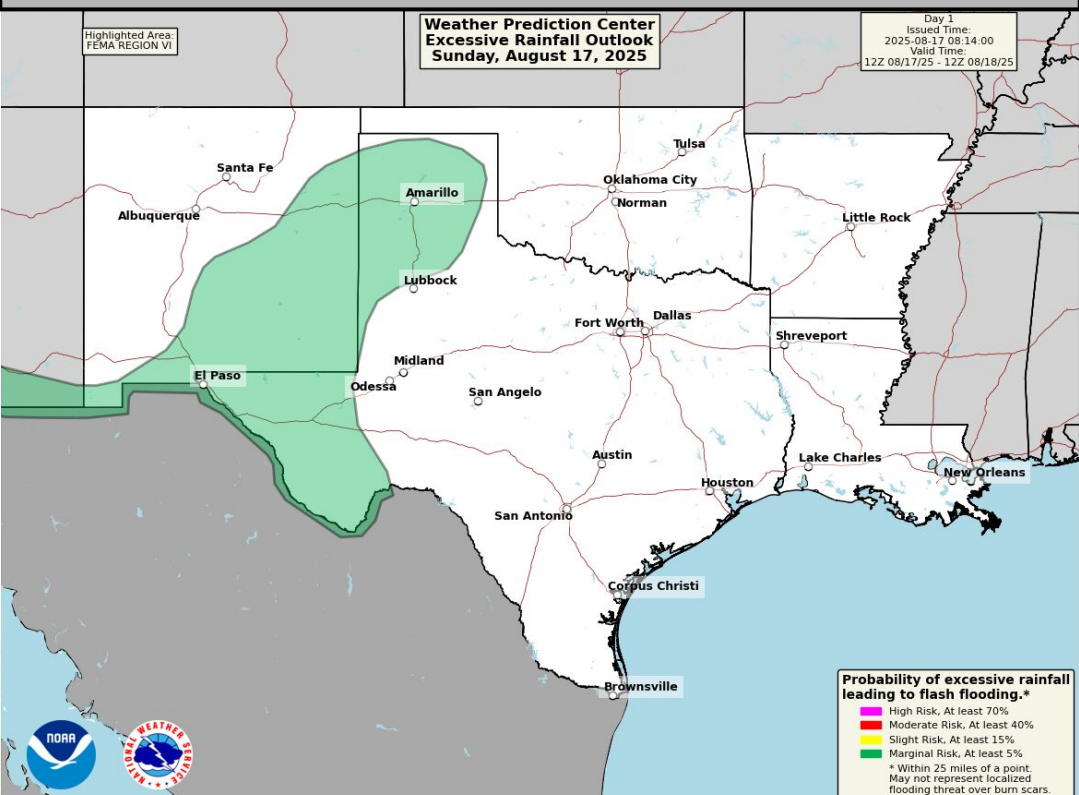
Hazardous heat in E OK, AR, NE TX, N LA.

Marginal risk (level 1 of 4) for flash flooding in NM, Far W TX, TX Panhandle.

Severe Weather Outlook



Excessive Rainfall Outlook

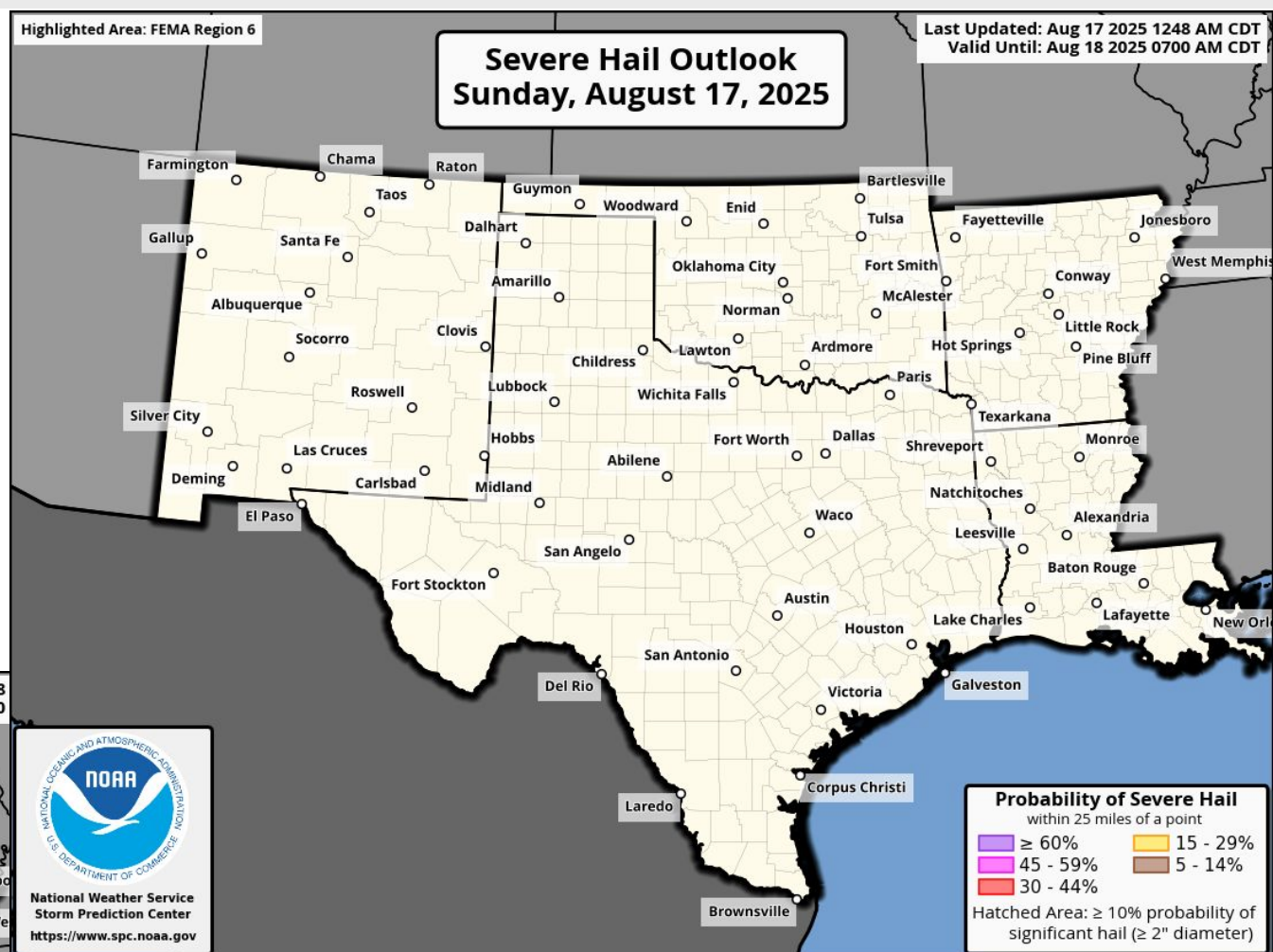
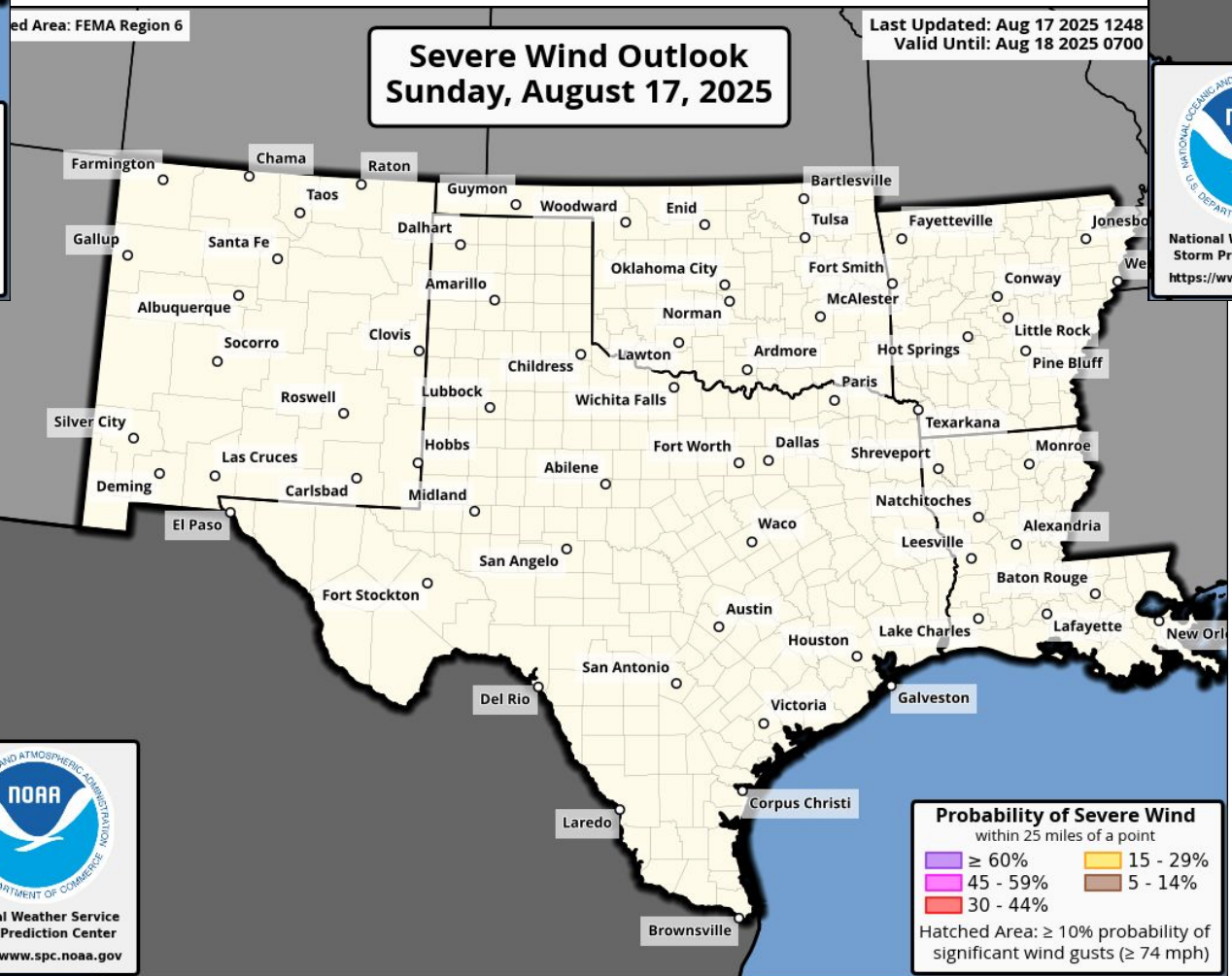
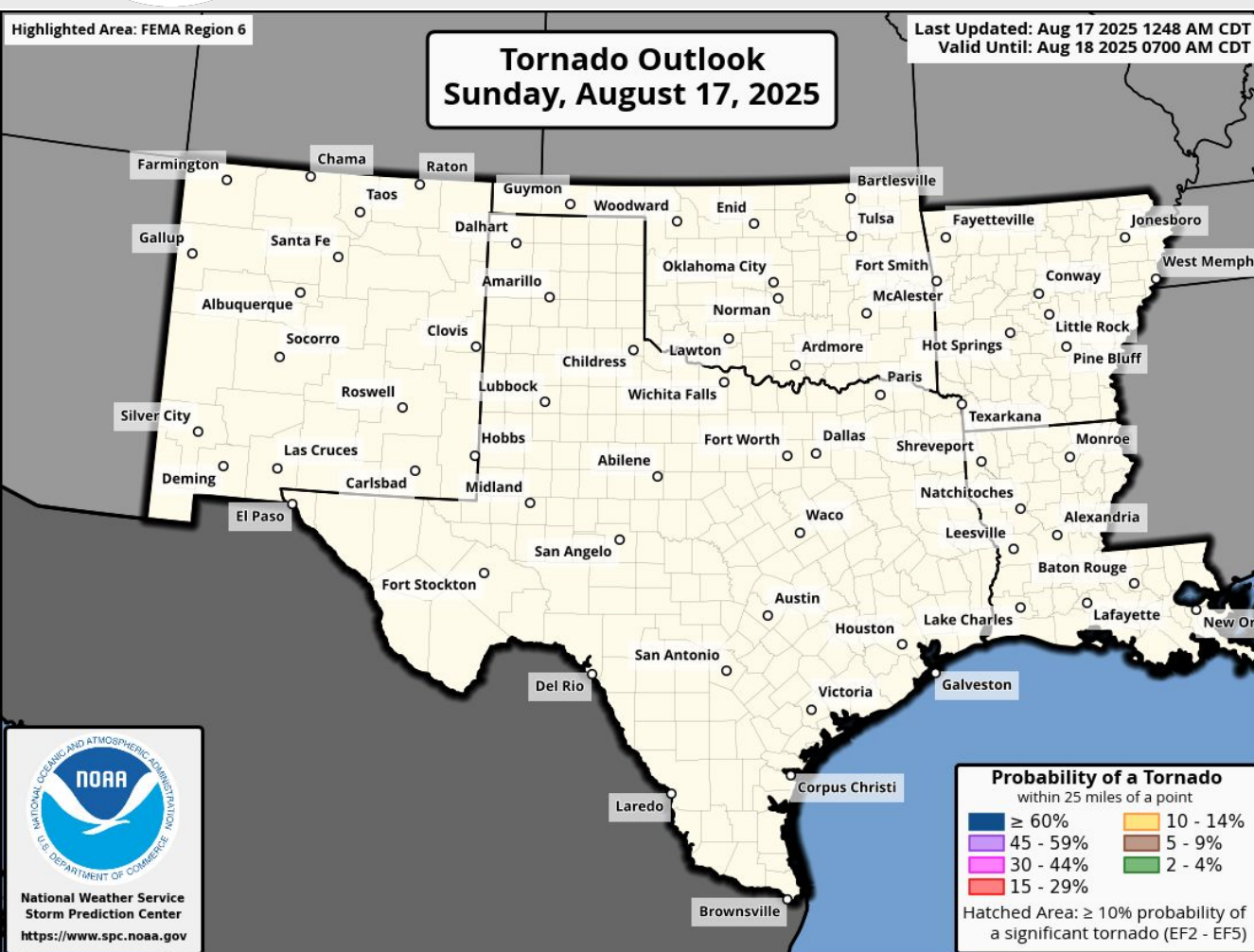


Burn Scar Flash Flooding information on Burn Scar Matrix slides





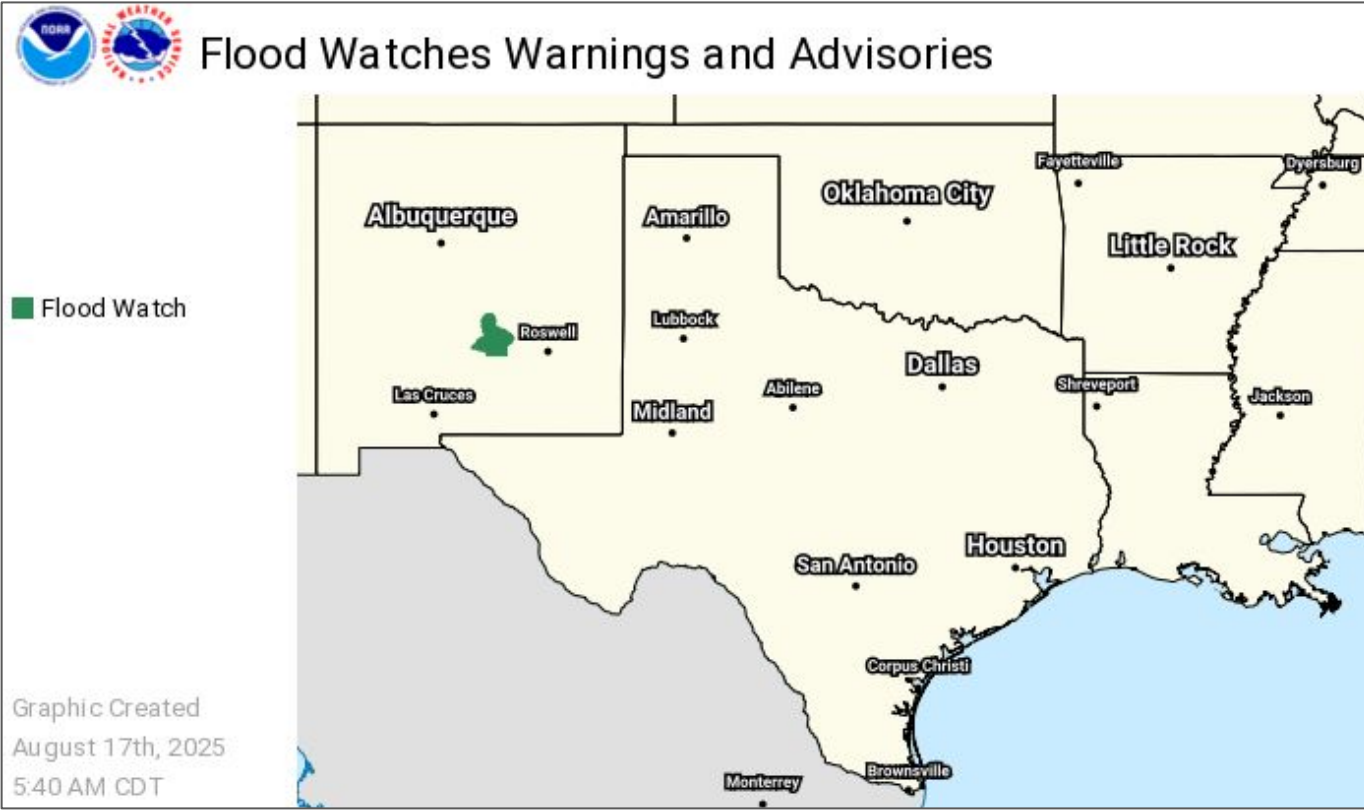
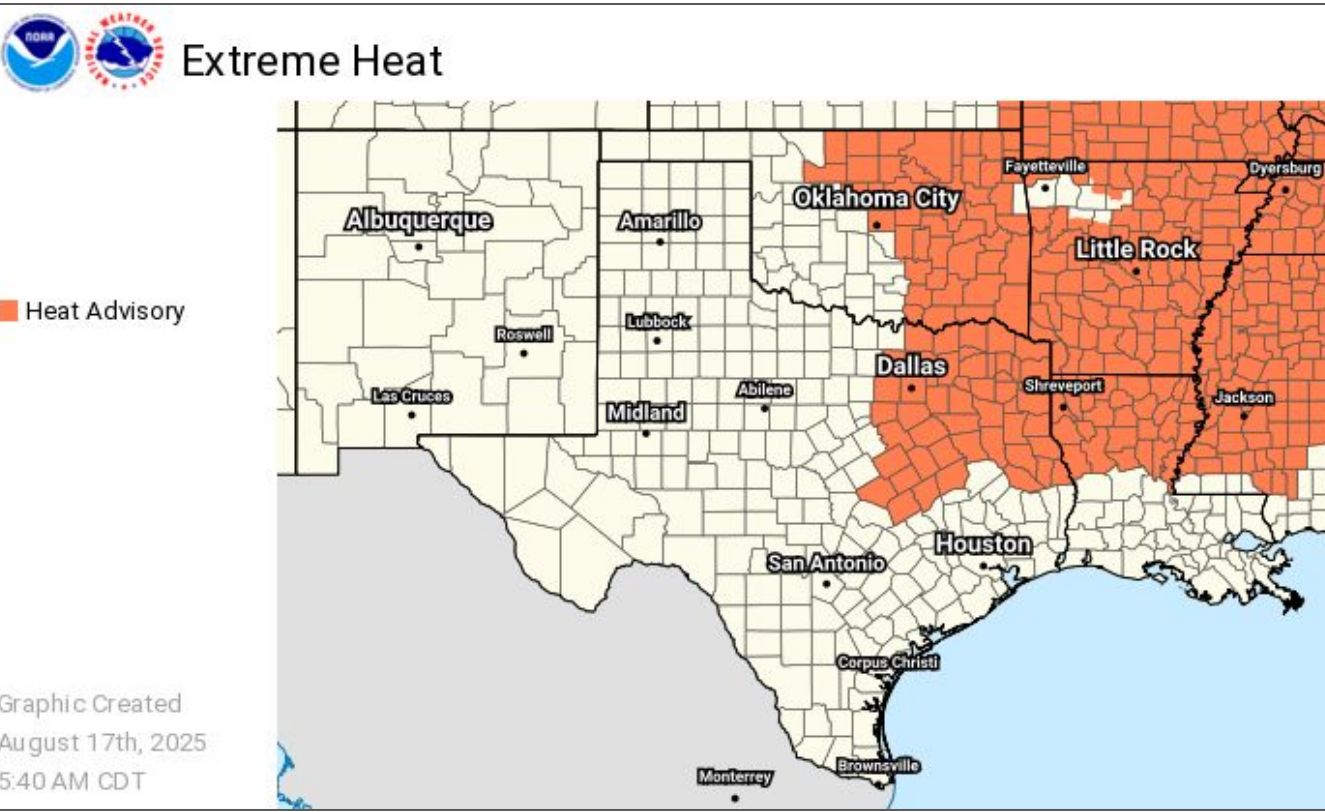
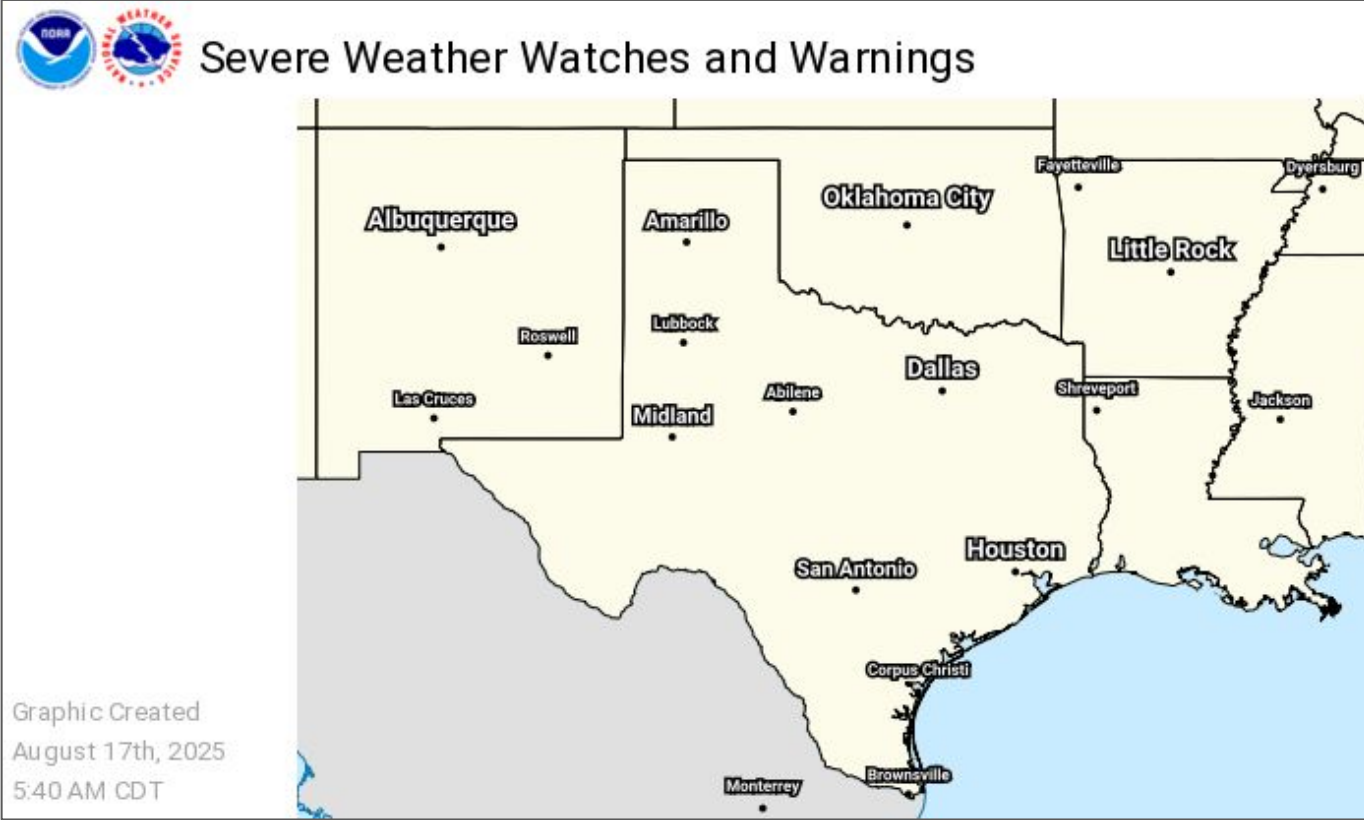
Today's Tornado & Severe Wind / Hail Probabilities





Watches, Warnings, and Advisories

Wind, Severe, Heat, and Flood Hazards



Heat Advisory in effect across E OK, AR, NE TX, N LA. Heat index values of 106-109 degrees.

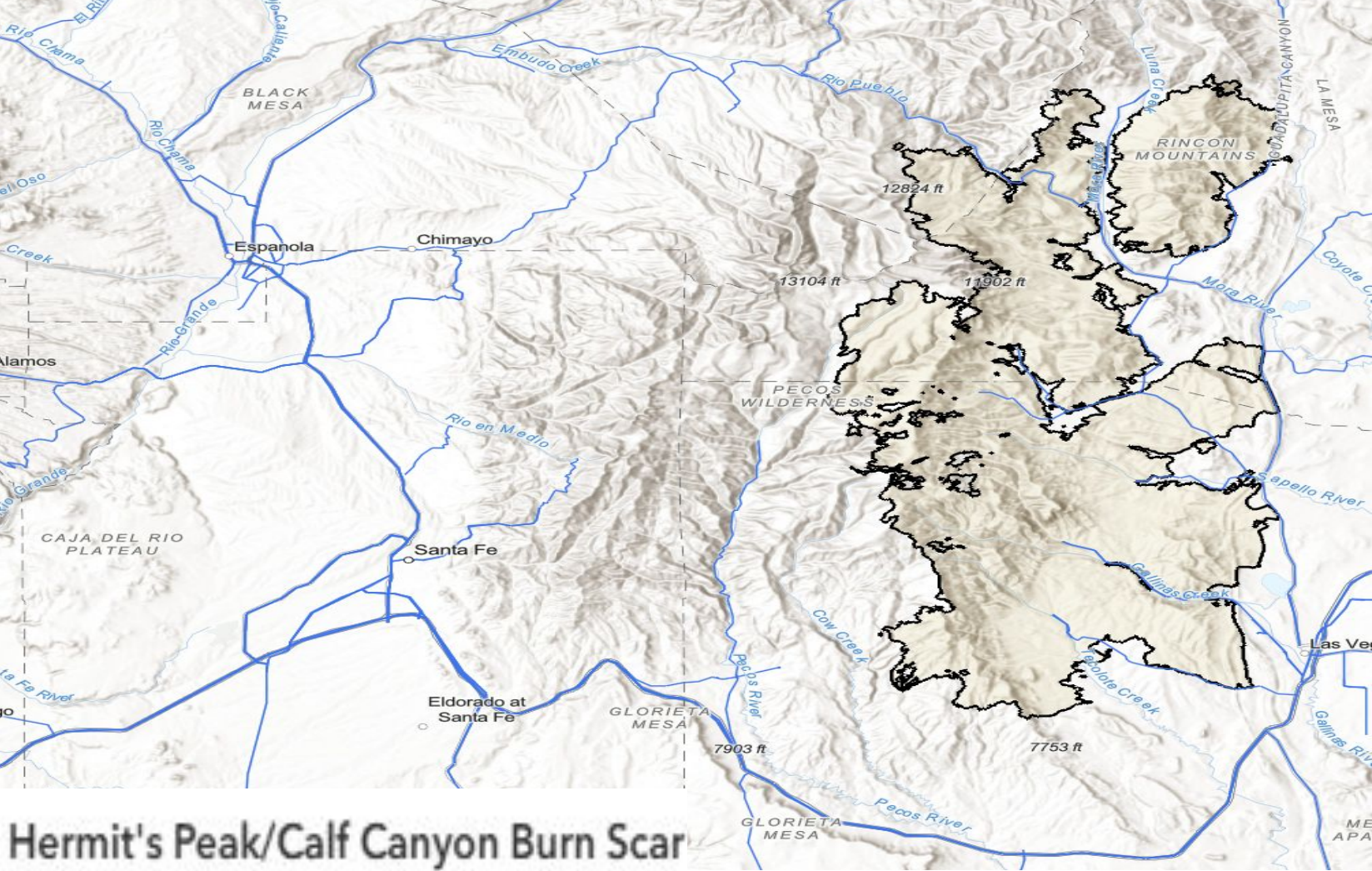
Flood Watch for Ruidoso, NM burn scar area from Noon CDT through 9 PM CDT this evening.



Burn Scar Debris Flow Risk - HPCC Scar New Mexico

Hermit's Peak/Calf Canyon Burn Scar

	Sunday, Aug 17	Monday, Aug 18	Tuesday, Aug 19	Wednesday, Aug 20
Flash Flooding	Minor	Moderate	Major	Moderate
Timing - CDT	2PM-9PM	Afternoon/Evening	Afternoon/Evening	Afternoon/Evening



Hermit's Peak/Calf Canyon Burn Scar

Little to None	No Flash Flood Threat
Minor (level 1 of 4)	Slight Risk of Flash Flooding
Moderate (level 2 of 4)	Probability of Flash Flooding Issuance 40% to 60%
Major (level 3 of 4)	Flood Watch Issued OR Debris Flow Probability > 50%
Extreme (level 4 of 4)	Life Threatening Flash Flooding Likely - Historic Type Day
<ul style="list-style-type: none">WPC's Excessive Rainfall Outlook is <i>Not Applicable</i> to burn scars.	

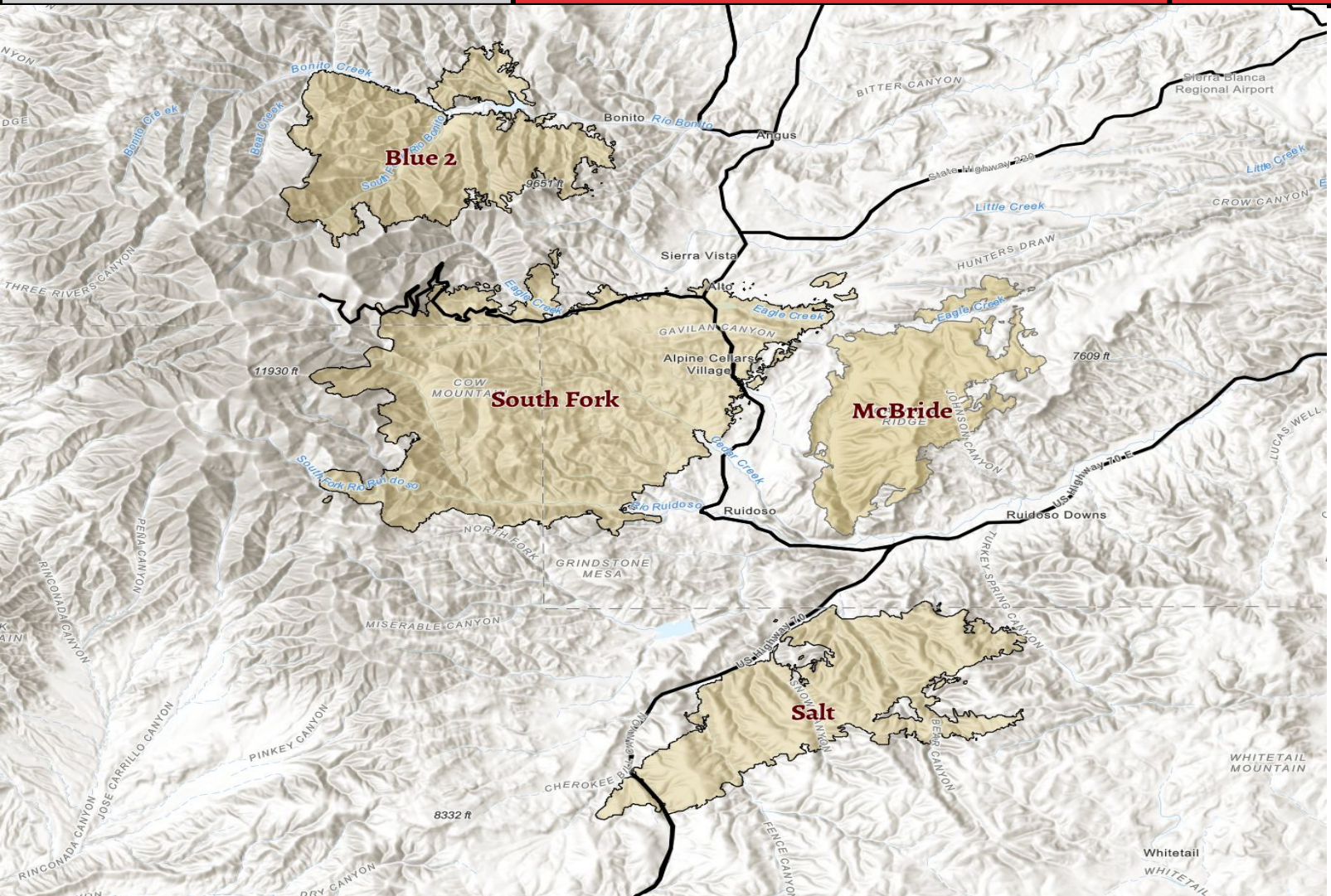




Burn Scar Debris Flow Risk - Ruidoso, New Mexico

Sacramento Complex

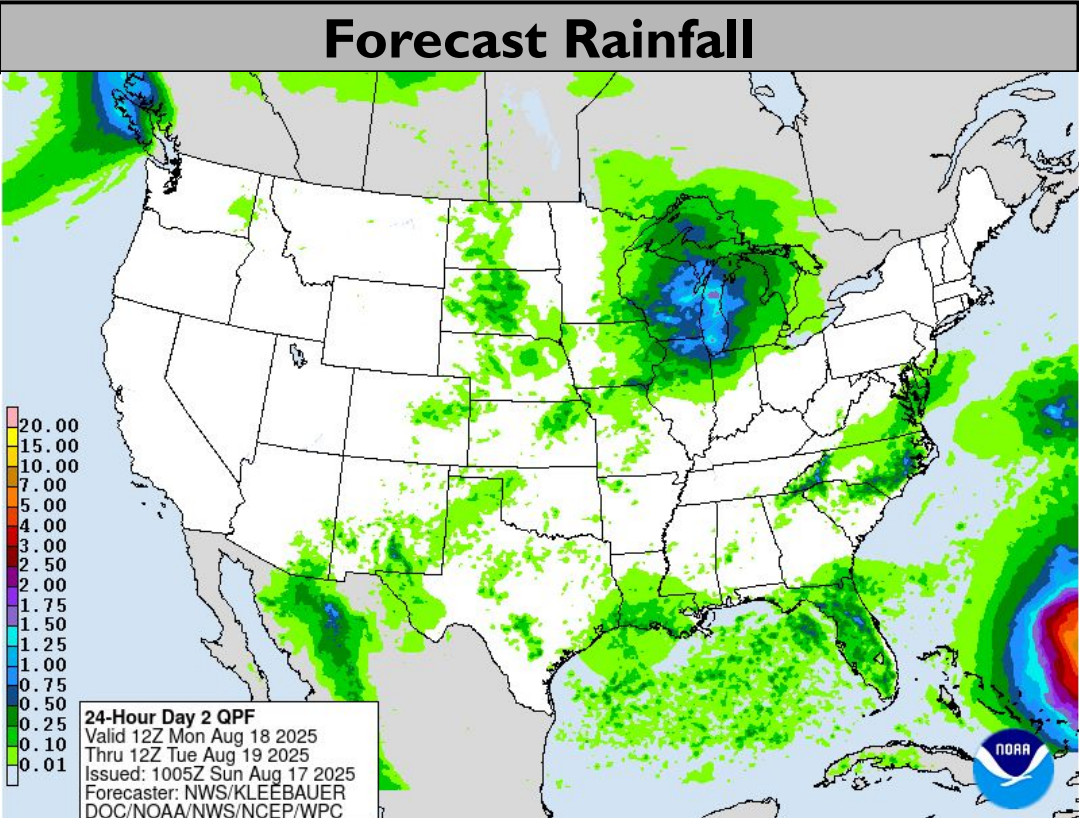
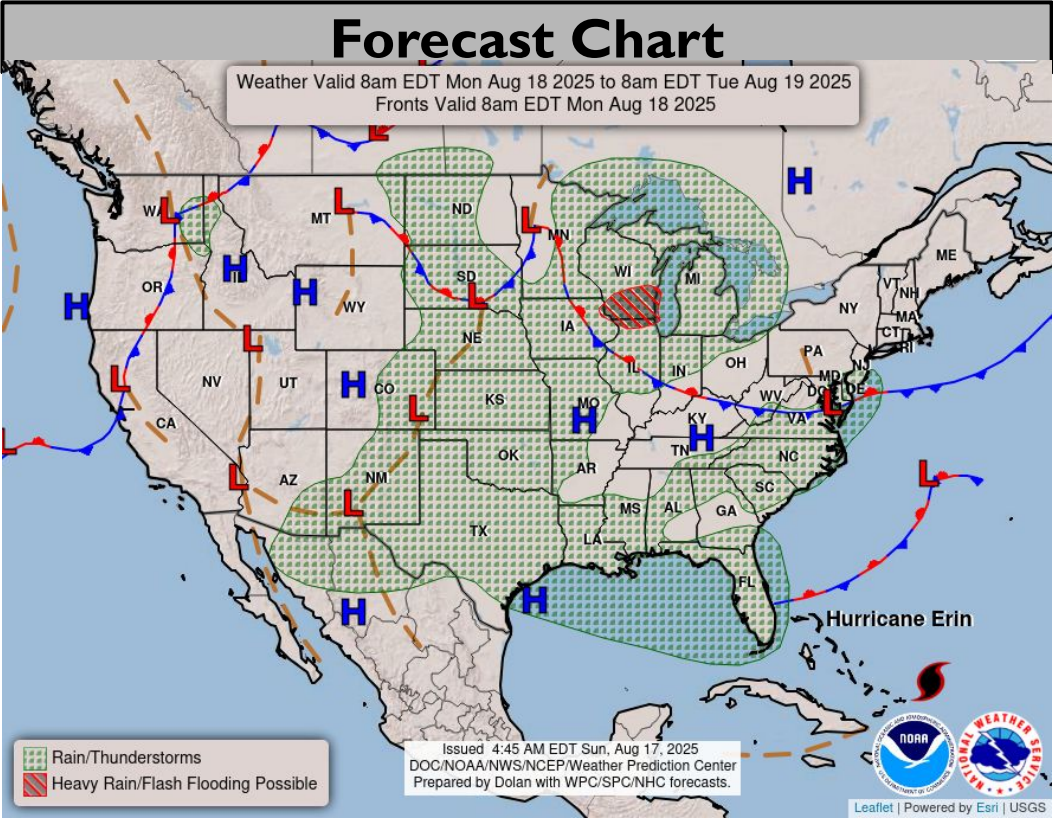
	Sunday, Aug 17	Monday, Aug 18	Tuesday, Aug 19	Wednesday, Aug 20
Flash Flooding	Major	Major	Major	Moderate
Timing - CDT	Noon-9 PM	Afternoon/Evening	Afternoon/Evening	Afternoon/Evening



Little to None	No Flash Flood Threat
Minor (level 1 of 4)	Slight Risk of Flash Flooding
Moderate (level 2 of 4)	Probability of Flash Flooding Issuance 40% to 60%
Major (level 3 of 4)	Flood Watch Issued OR Debris Flow Probability > 50%
Extreme (level 4 of 4)	Life Threatening Flash Flooding Likely - Historic Type Day
<ul style="list-style-type: none">WPC's Excessive Rainfall Outlook is <i>Not Applicable</i> to burn scars.*Note* 2nd year burn scars can be <u>more dangerous</u> than year 1.	

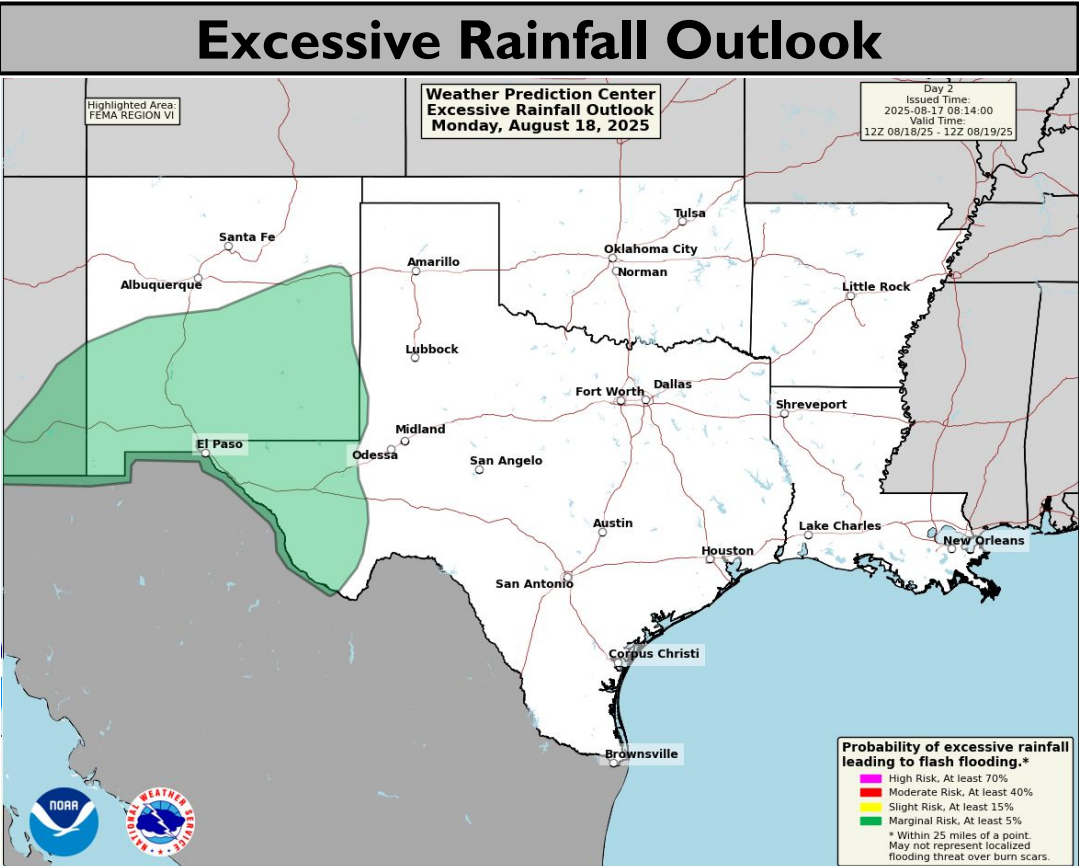
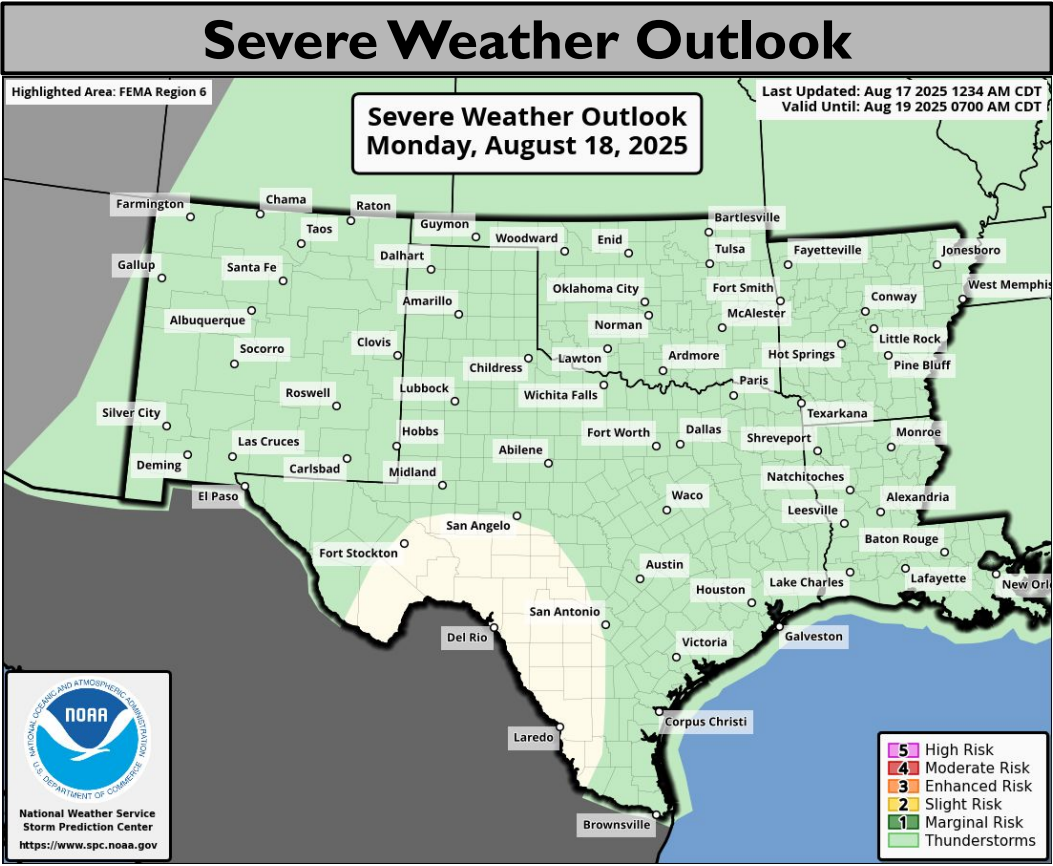


Tomorrow's Weather



Hazardous heat in E OK, AR, NE TX, N LA.

Marginal risk (level 1 of 4) for flash flooding in NM and far W TX.

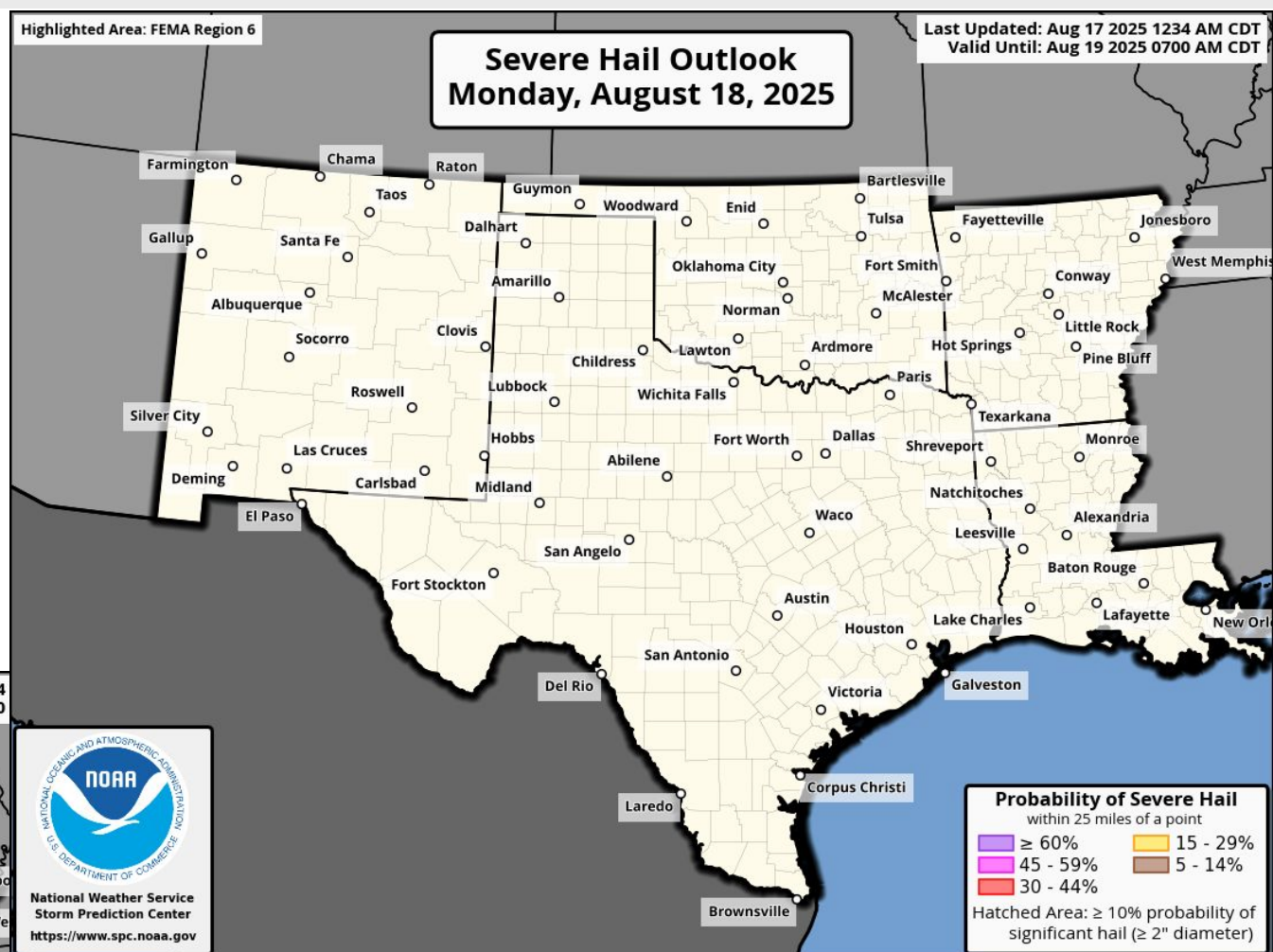
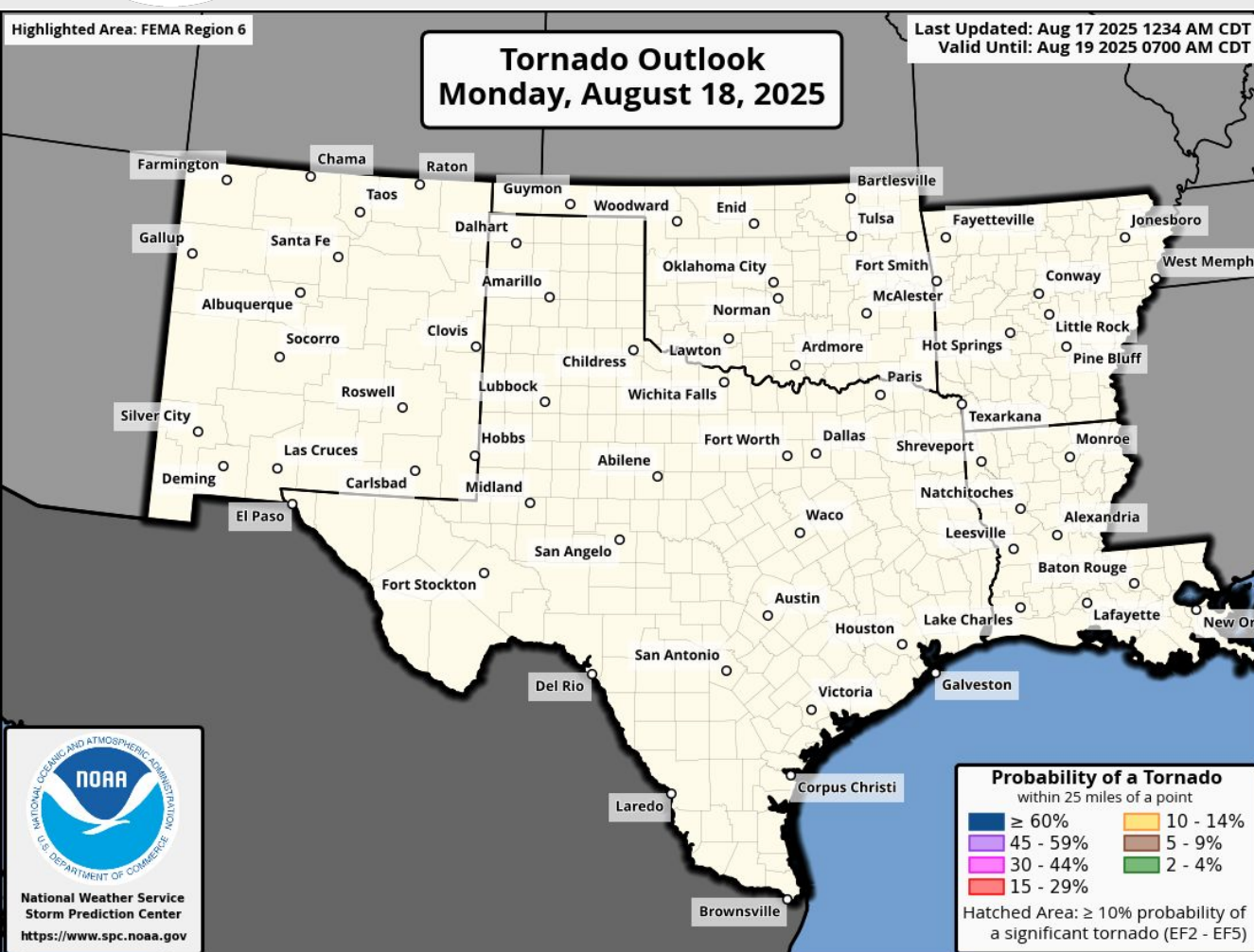


****Burn Scar Flash Flooding information on Burn Scar Matrix slides****





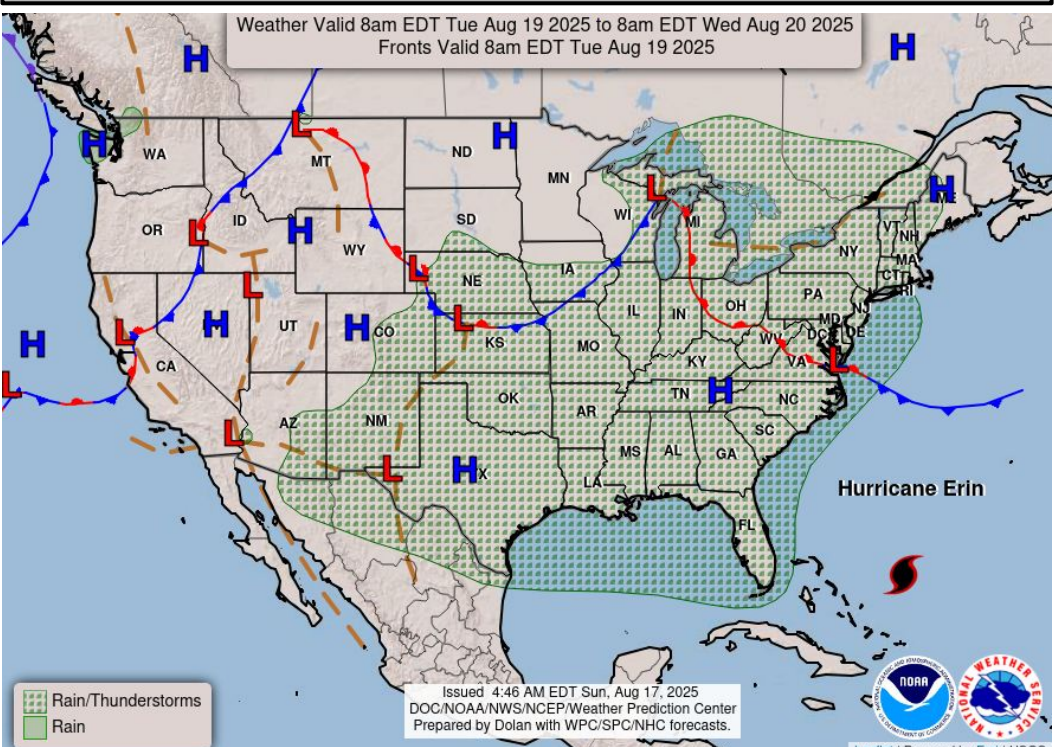
Tomorrow's Tornado & Severe Wind / Hail Probabilities



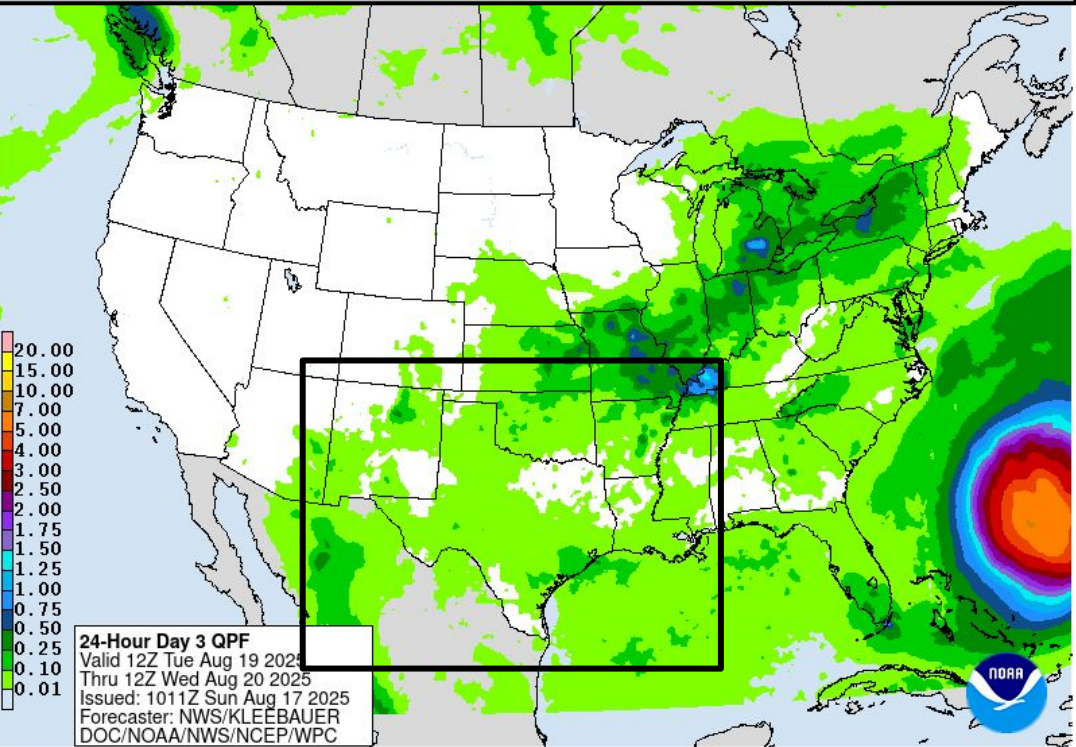


Tuesday's Weather

Forecast Chart



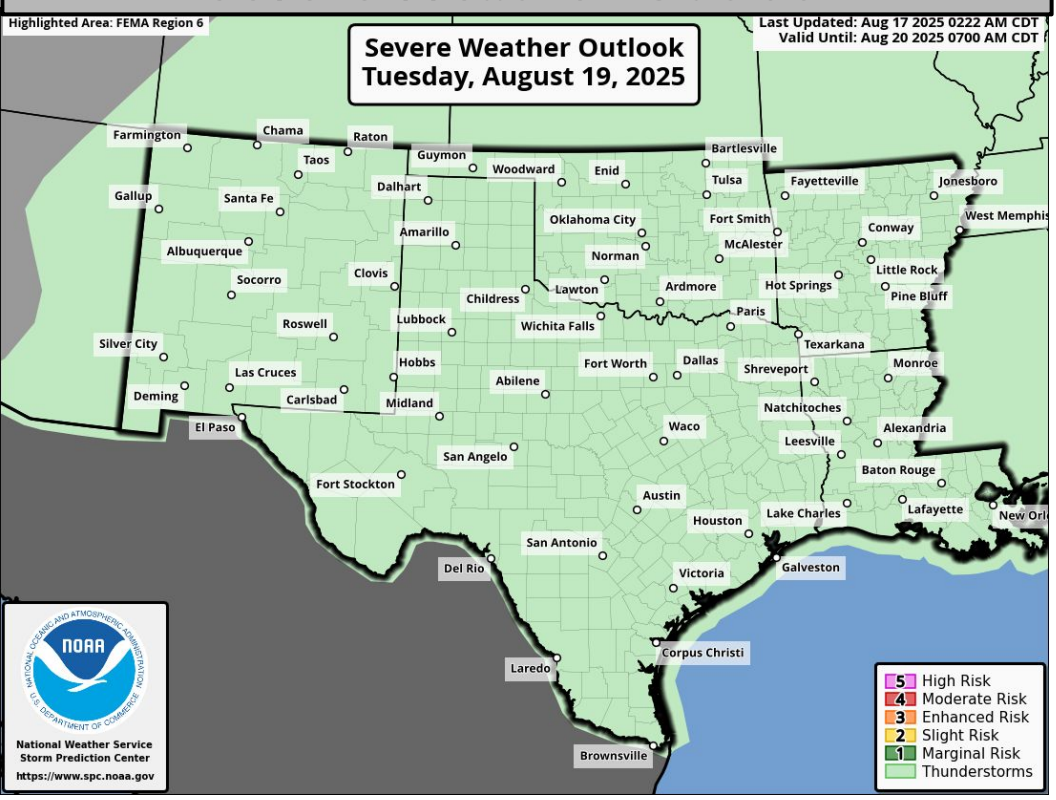
Forecast Rainfall



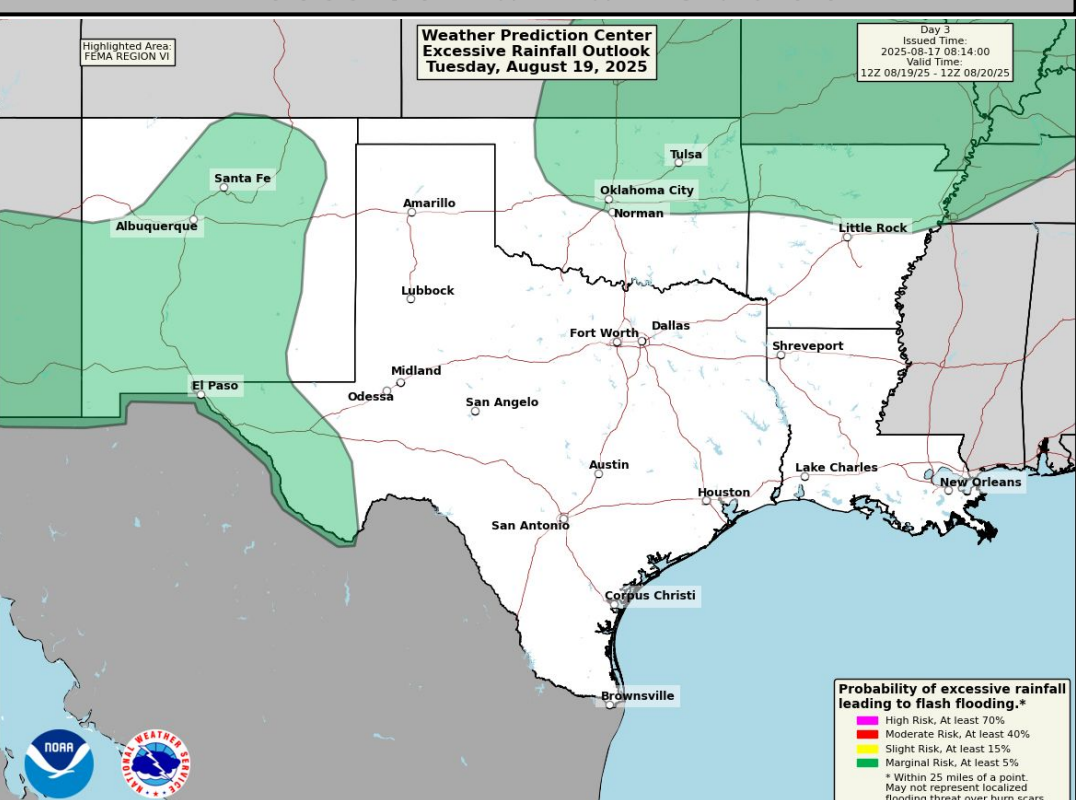
Hazardous heat in E OK, AR, NE TX, N LA.

Marginal risk (level 1 of 4) for flash flooding in NM, far W TX, N OK and N AR.

Severe Weather Outlook



Excessive Rainfall Outlook

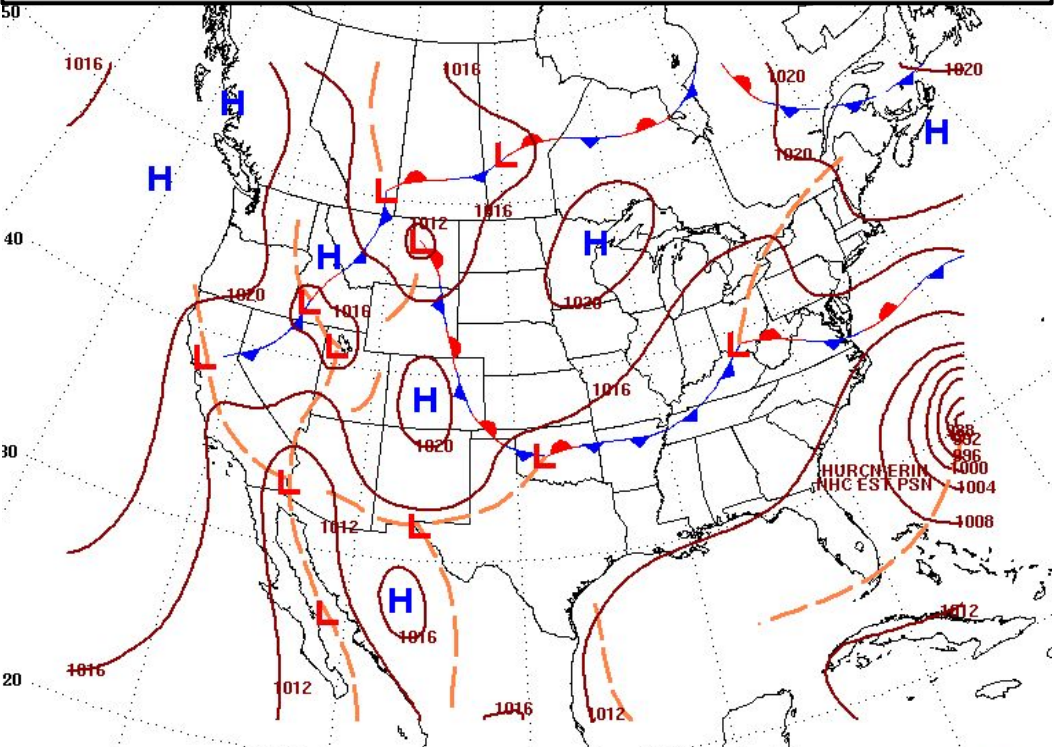


Burn Scar Flash Flooding information on Burn Scar Matrix slides

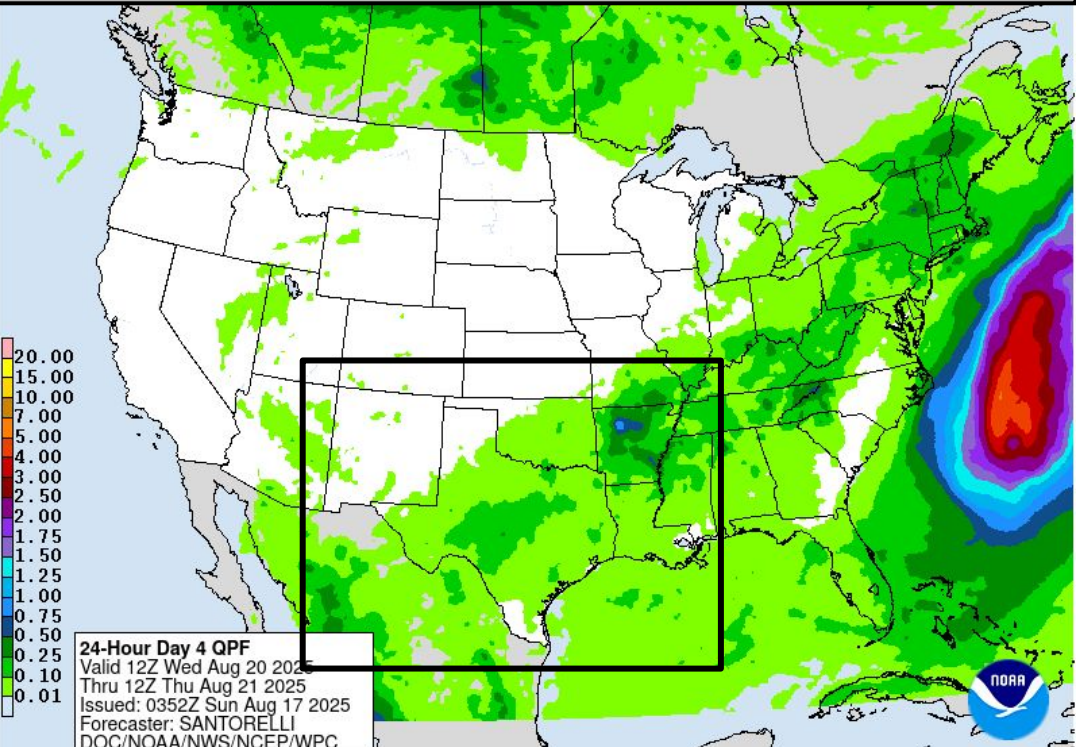


Wednesday's Weather

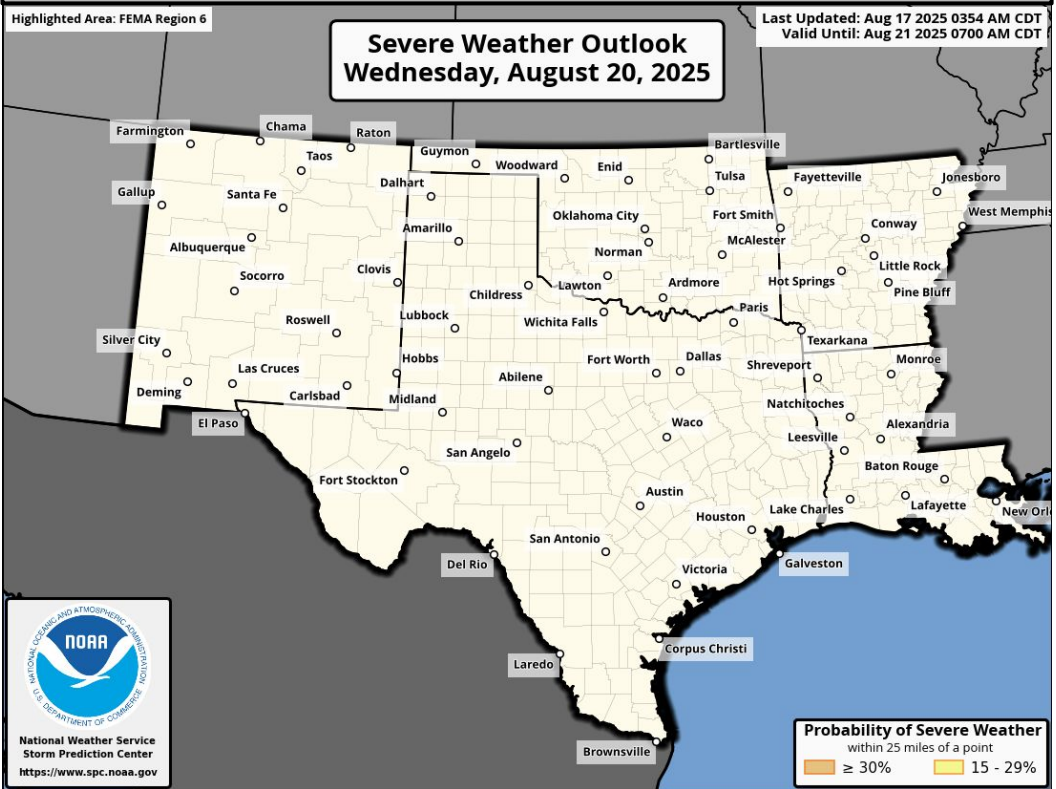
Forecast Chart



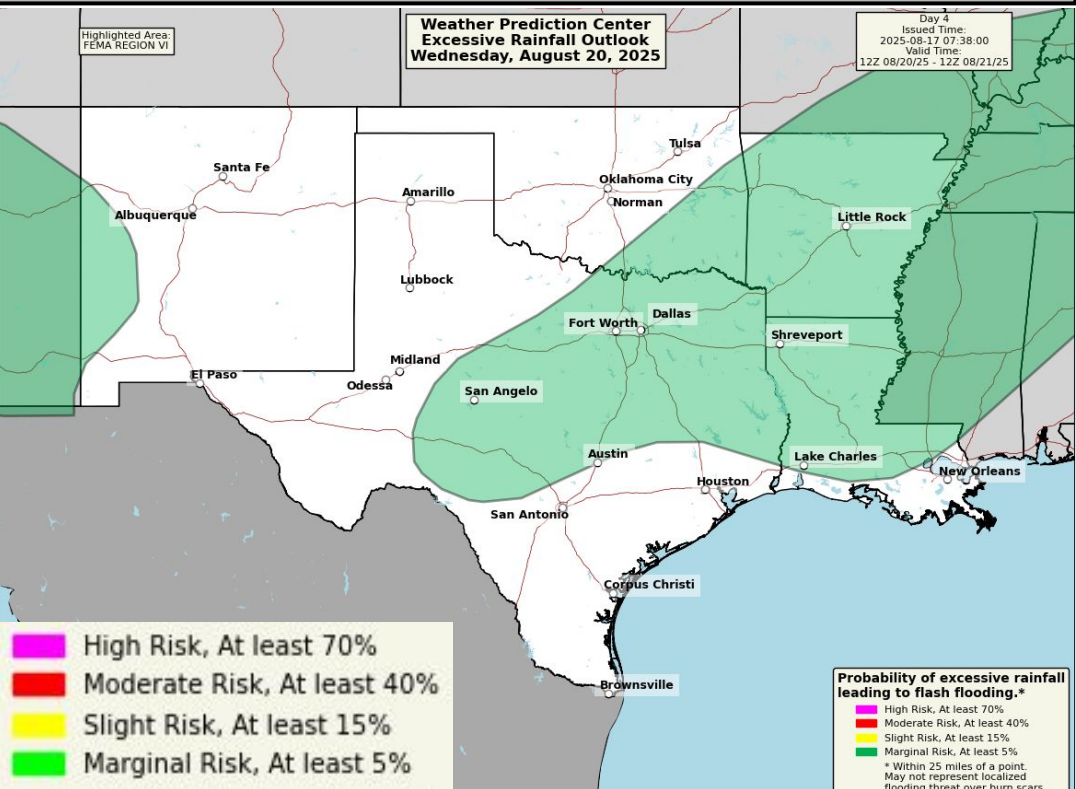
Forecast Rainfall



Severe Weather Outlook



Excessive Rainfall Outlook



Hazardous heat in the ArkLaTex area.

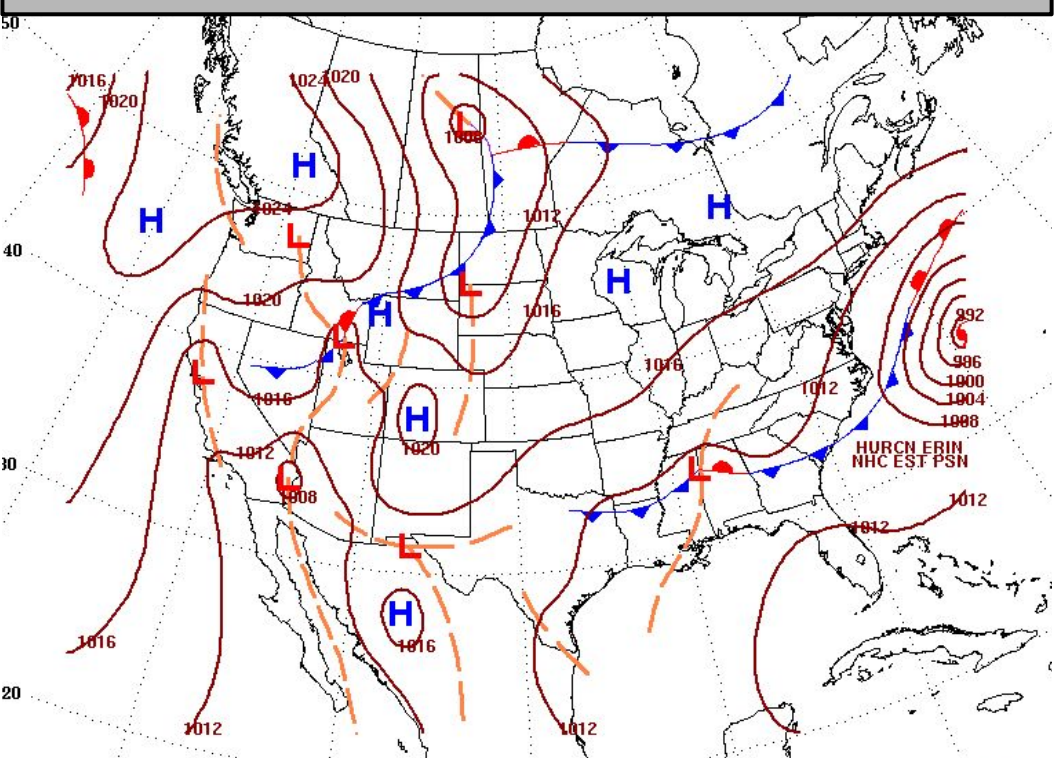
Marginal risk (level I of 4) for flash flooding in W NM, TX, SE OK, AR, LA.

****Burn Scar Flash Flooding information on Burn Scar Matrix slides****

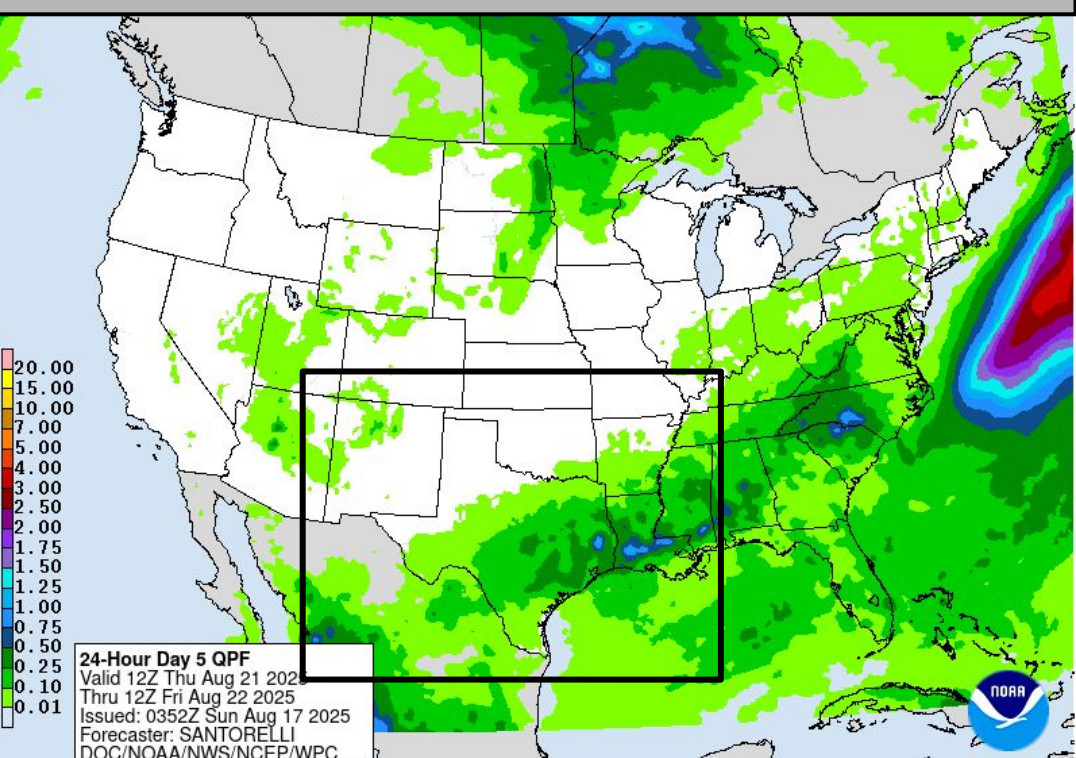


Thursday's Weather

Forecast Chart

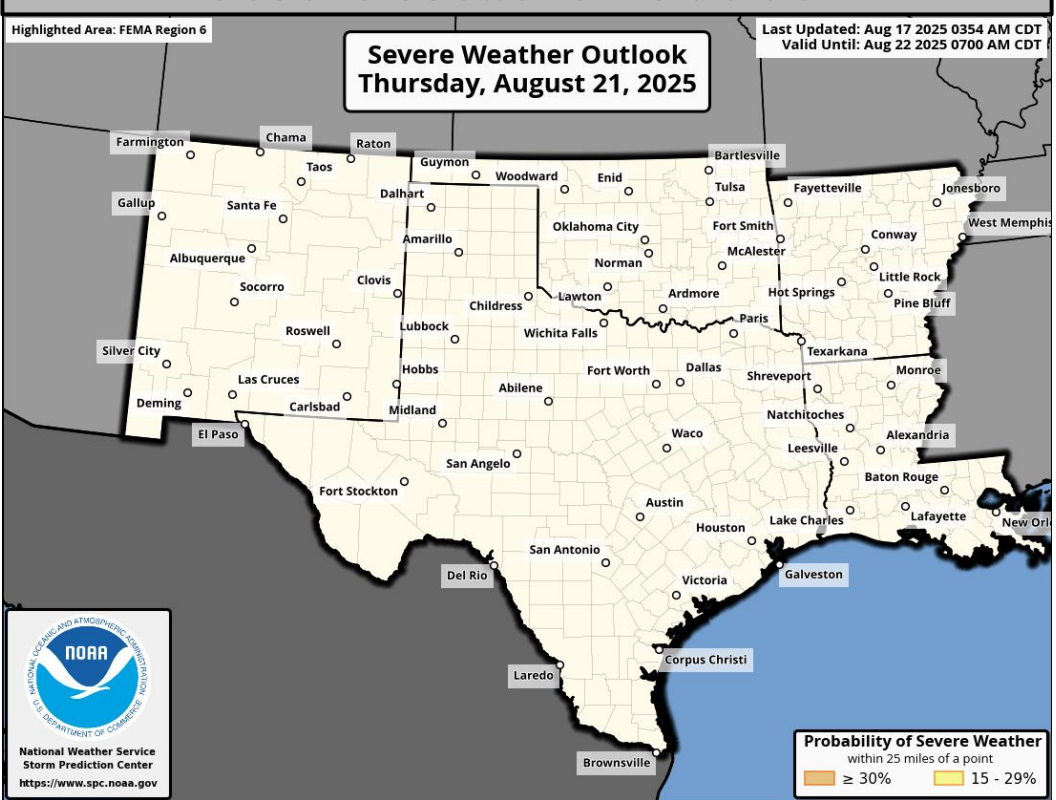


Forecast Rainfall

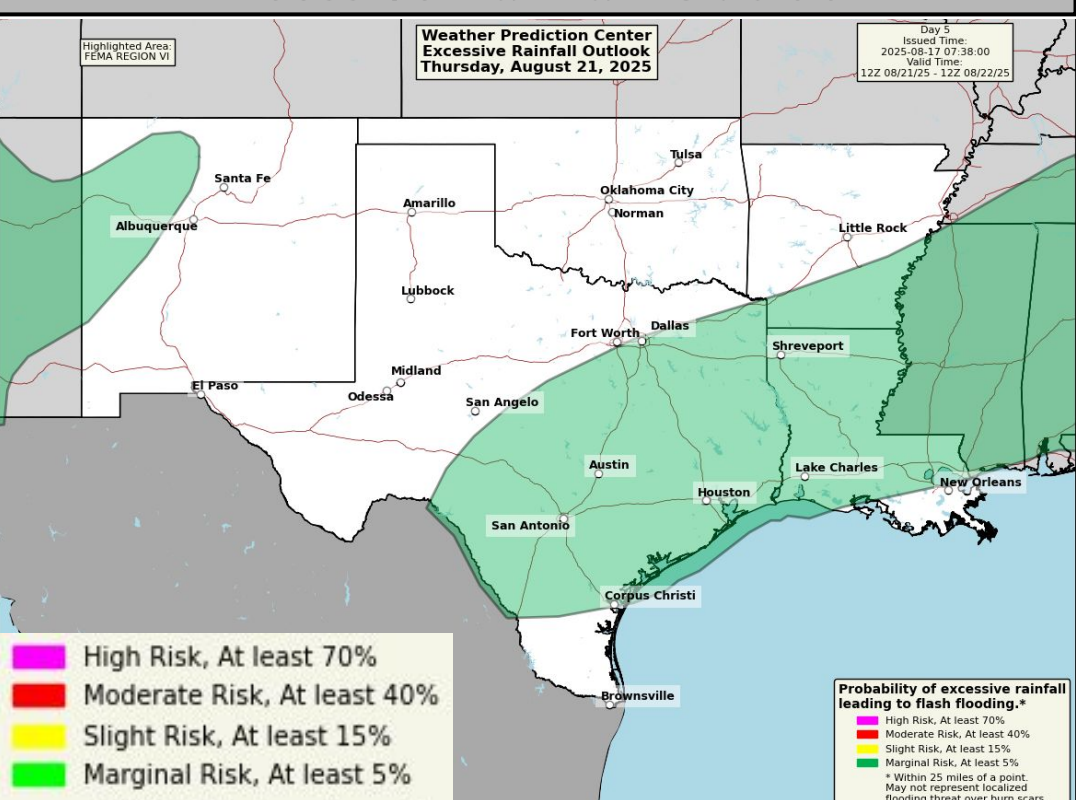


Marginal risk (level I of 4) for flash flooding in W NM, TX, S AR, LA.

Severe Weather Outlook



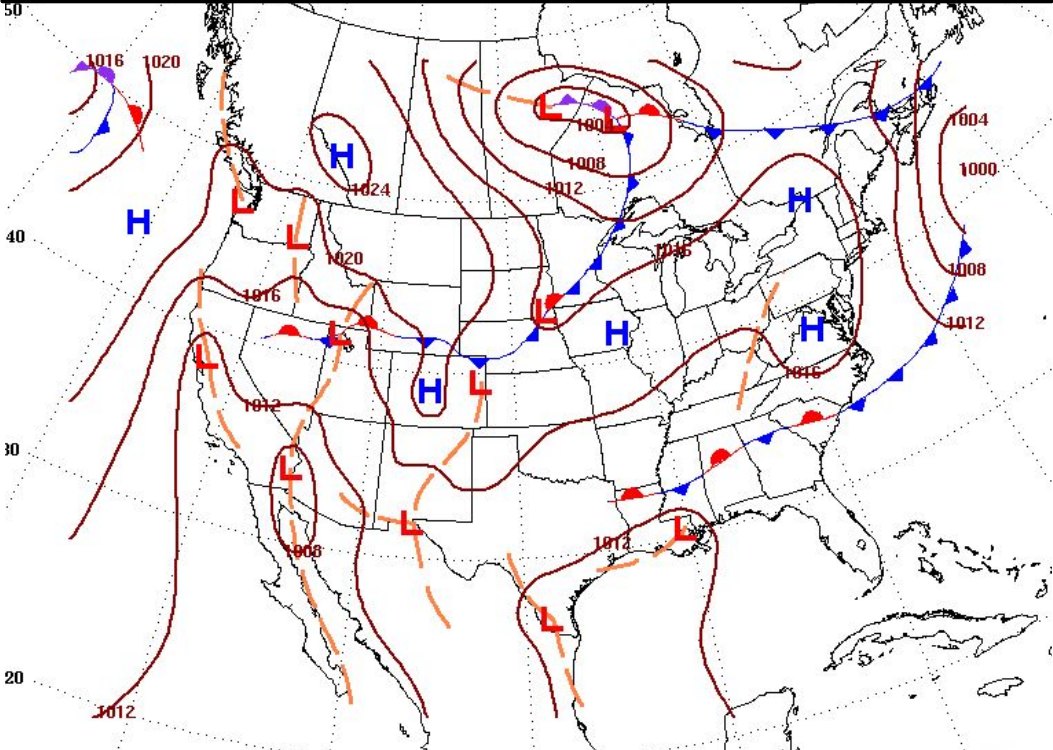
Excessive Rainfall Outlook



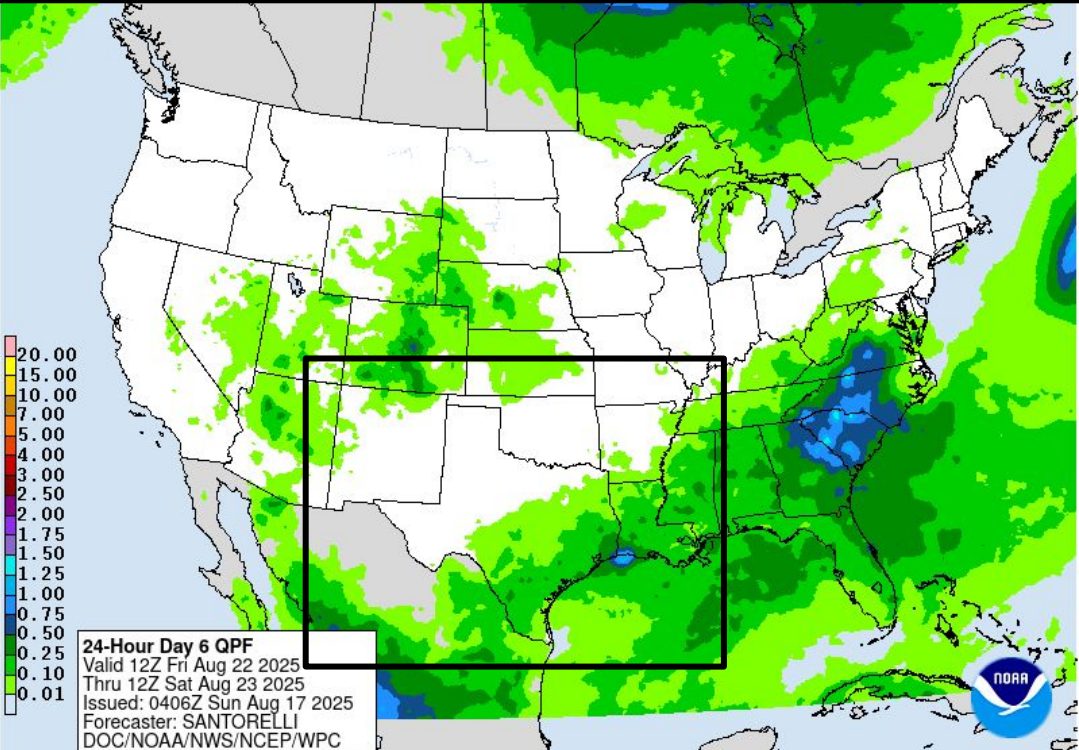


Friday's Weather

Forecast Chart

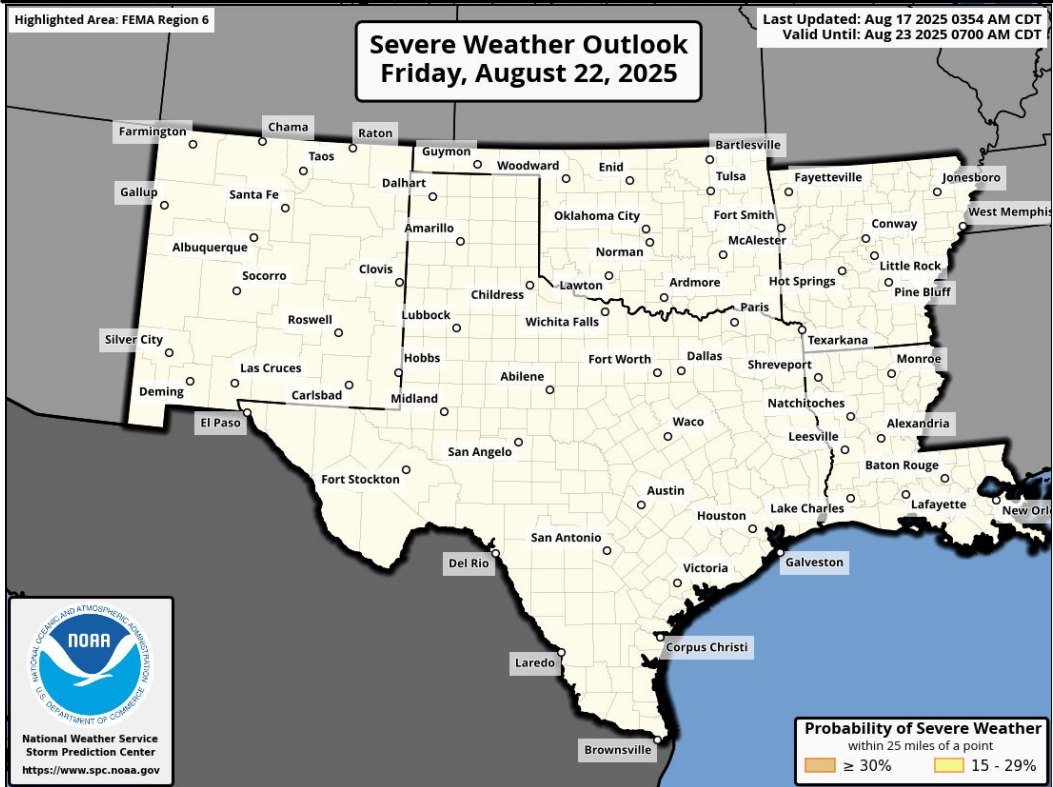


Forecast Rainfall



Marginal risk (level I of 4) for flash flooding in C-ETX, LA.

Severe Weather Outlook



Excessive Rainfall Outlooks not available beyond Day 5





This map illustrates the atmospheric conditions over the United States on March 10, 1994. A low-pressure system (L) is centered over the Great Lakes region, with a minimum pressure of 1008 hPa. High-pressure systems (H) are located in the Pacific Northwest (1016 hPa), the Southwest (1012 hPa), the central US (1020 hPa), and the Northeast (1016 hPa). Isobars are drawn at 4 hPa intervals, with values ranging from 1012 to 1020 hPa. Frontal boundaries are shown with red lines and triangles: a cold front extends from the low-pressure center towards the northeast, and a warm front extends towards the south. A dashed orange line indicates a boundary in the southern US. The map includes latitude and longitude markings and state boundaries.

Monitoring NM for heavy rain/flash flooding.

Highlighted Area: FEMA Region 6

**Severe Weather Outlook
Saturday, August 23, 2025**

Last Updated: Aug 17 2025 0354 AM CDT
Valid Until: Aug 24 2025 0700 AM CDT

Probability of Severe Weather
within 25 miles of a point

- ≥ 30%
- 15 - 29%

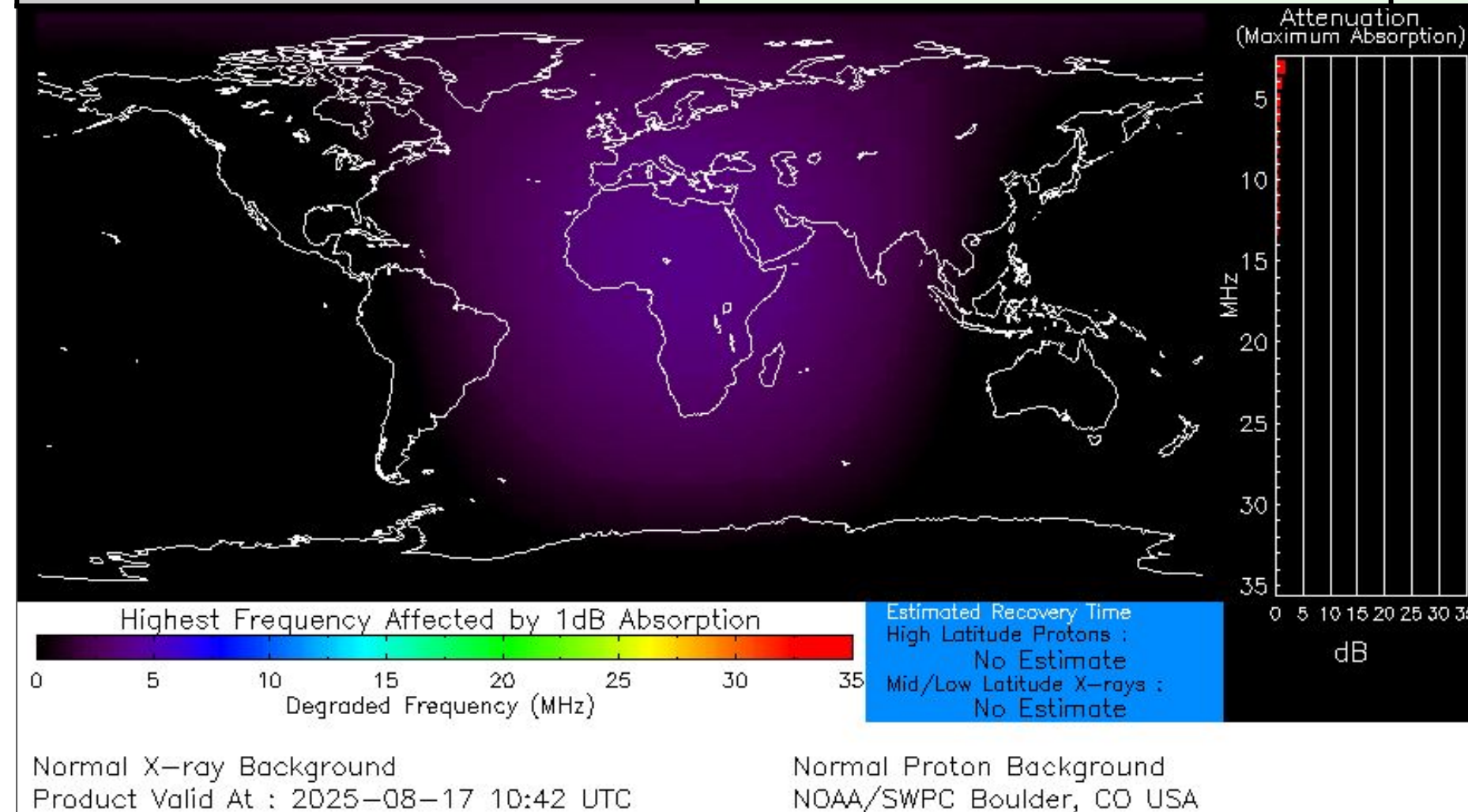
**National Weather Service
Storm Prediction Center
<https://www.spc.noaa.gov>**

Excessive Rainfall Outlooks not available beyond Day 5



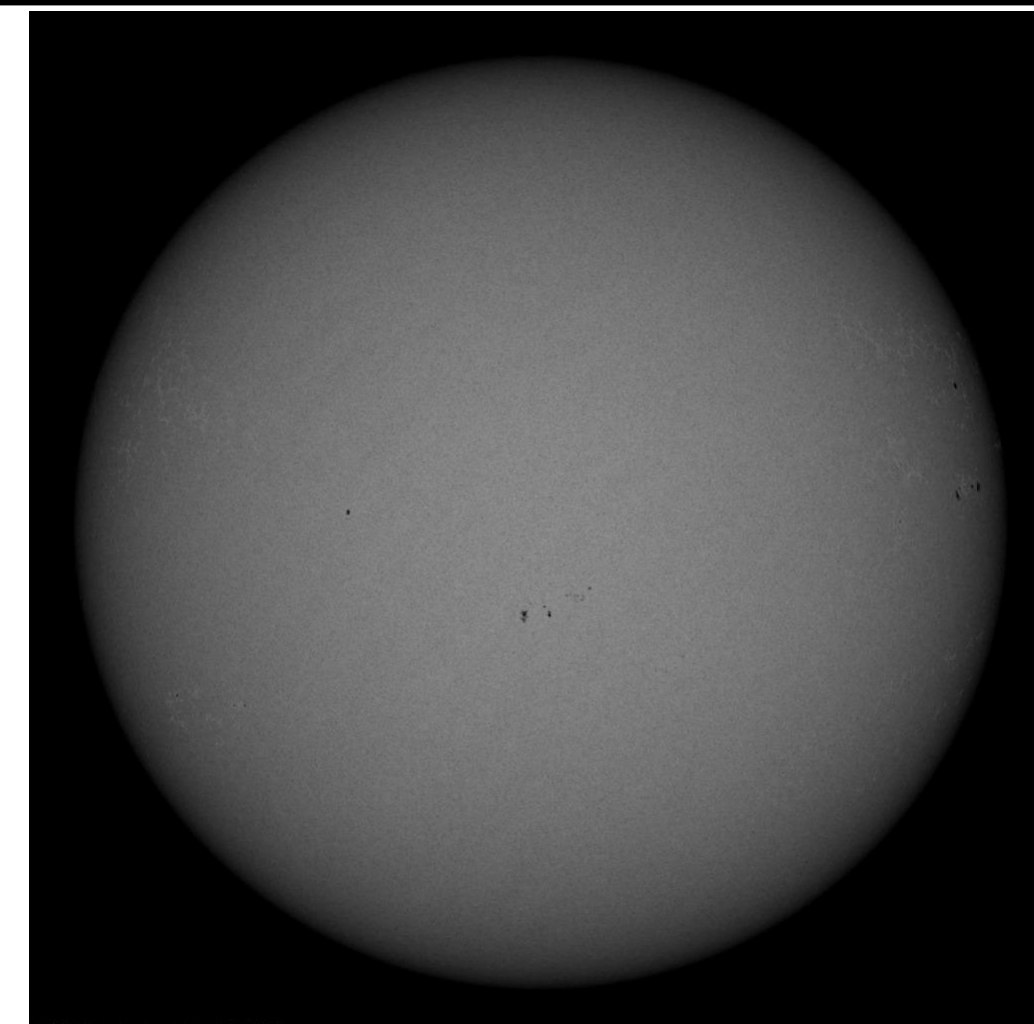
Space Weather 3-Day Forecast

	Sunday, Aug 17	Monday, Aug 18	Tuesday, Aug 19
Geomagnetic Storms	Quiet (Max Kp = 2)	Minor (G1 Storm) (Max Kp = 5)	Active (Max Kp = 4)
Solar Radiation Storm (S1-S5)	1%	1%	1%
Radio Blackout (R1-R2)	20%	15%	15%
Radio Blackout (R3-R5)	1%	1%	1%



[Description of the Space Weather Storm Scales](#)

[Latest 3-Day Space Weather Forecast](#)



Weather “Threat” Matrix for FEMA Region VI			
Color	Definition	Criteria	Example(s)
Green	Little to None Safety: Rarely a Direct Threat to Life and Property Impact Potential: Typically Results in Little Inconvenience to Daily Routines	Severe: Marginal Risk from SPC Flooding: Minor flooding expected over localized areas Tropical: None Fire Weather: No Watches/Warnings, fuel moisture above 10% or green up active	<ul style="list-style-type: none"> Thunderstorms expected over LA this afternoon; a few may produce winds to knock down a few trees Something that happens almost every day in a particular season such as seabreeze storms in coastal TX
Yellow	Minor Safety: Rarely a Direct Threat to Life and Property Impact Potential: Typically Results in Some Inconvenience to Daily Life	Severe: Slight Risk from SPC Flooding: Nuisance flooded expected for a widespread area, or Minor flooding expected over isolated areas Tropical: A weak tropical wave expected to move towards or near any coastline Fire Weather: Red Flag Watches/Warnings and/or SPC outlines enhanced or critical fire outlook	<ul style="list-style-type: none"> 2-3 inches of rainfall expected over central AR today and tonight; some minor (brief) street flooding possible Scattered severe storms possible, one or two tornadoes expected, along with reports of strong winds/wind damage and ~1” hail
Orange	Moderate Safety: Often Threatening to Life and Property, Some Damage Unavoidable Impact Potential: Typically Results in Minor Disruption to Daily Life	Severe: Enhanced Risk from SPC Flooding: Minor flooding expected over a widespread area (including urban locations), or Moderate flooding expected over isolated areas Tropical: A Tropical Storm expected to move towards or near any coastline Fire: Critical fire outlook for more than 2 consecutive days, Warnings for 2 or more consecutive days, D3-D4 drought conditions	<ul style="list-style-type: none"> A snow/sleet mix is expected to move through or near the DFW area tomorrow morning; travel impacts likely Numerous severe storms possible, a few tornadoes possible along with several reports of wind damage along with damaging hail Some large fires reported, burn bans advertised, critical conditions expected
Red	Major Safety: Extensive Property Damage Likely, Life Saving Actions Also will be Needed Impact Potential: Will likely result in Large Disruption to Daily Life	Severe: Moderate Risk from SPC Flooding: Moderate flooding expected over a widespread area (including urban locations) Tropical: A Hurricane expected to move towards or near any coastline Fire: Large areas of critical conditions for 2 or more days, Warnings for 3 or more days, Severe to extreme drought	<ul style="list-style-type: none"> A Category 1 hurricane will be moving towards the NW Gulf in the next few days Widespread severe storms likely, strong tornadoes, widespread wind damage, and destructive hail Large fires ongoing throughout the area with critical fire weather conditions expected to continue
Purple	Extreme Safety: Property Damage Unavoidable, Immediate Action to Save Life will be Needed Impact Potential: Typically Results in Long-Lived Widespread Major Disruption to Daily Life	Severe: High Risk from SPC Flooding: Major flooding expected over a widespread area (including urban locations) Tropical: A Major Hurricane (Cat3 or greater) expected to move towards or near any coastline Fire: Large area of critical conditions for 2 or more days, Warnings for 3 or more days, Long term (months) of severe to extreme drought	<ul style="list-style-type: none"> A Category 4 hurricane is headed towards the SE LA; major storm surge, flooding and damaging winds anticipated to begin tomorrow Widespread severe storms expected, tornado outbreak probable with long-lived, very widespread and particularly intense storms

Criteria for the color codes in this briefing is to the left, please provide any feedback to sr-srh.roc@noaa.gov



National Weather Service

Southern Region Headquarters

Regional Operations Center

Fort Worth, TX



Phone: (682) 703-3747



Facebook: NWSSouthern



E-mail: sr-srh.roc@noaa.gov



X: NWSSouthern

WWW

Web: www.weather.gov/srh

