



FEMA



Prepared by
Kurt Van Speybroeck

FEMA Region 6 Weather Threat Briefing

Friday June 19, 2020

Disclaimer: The purpose of this briefing is to provide a **Regional** weather threat assessment and is meant as a general overview. County/Parish decision makers should consult their local NWS forecast offices for the latest detailed, local weather information. To find your local NWS forecast office, go to www.weather.gov/srh.



NWSSouthern

www.weather.gov/srh



- **Elevated to critical fire weather conditions across S NM today.**
- **Marginal to slight risk of severe storms across E NM into W TX/W OK through Sunday.**
- **Isolated heavy rainfall and flash flooding across parts of TX/OK.**

FEMA Region 6 Threat Matrix

Jun 19, 2020 - Jun 23, 2020



SR ROC
REGIONAL OPERATIONS CENTER

DAY / THREAT	Fri	Sat	Sun	Mon	Tue
Severe Storms	WTX	OK/WTX	OK/WTX		
Heavy Rain / Flash Flooding	TX/OK				
Fire Weather	S NM				
Tropical Winds / Surge					
Winter Weather					
River Flooding	AR, LA	AR, LA	AR, LA	AR, LA	AR, LA

	No Weather Threats Expected
	Very Common – Happens Often
	Common – Happens Frequently
	Uncommon – A Few Times a Year
	Rare – Once Every 1-5 Years
	Very Rare – Once Every 5-10 Years

Threat levels are based on FEMA Region 6 criteria. State or local threat level criteria may differ.

For more details on the colors in the threat matrix refer to the last slide in this briefing.

Tropical Weather Outlook – Atlantic/Gulf



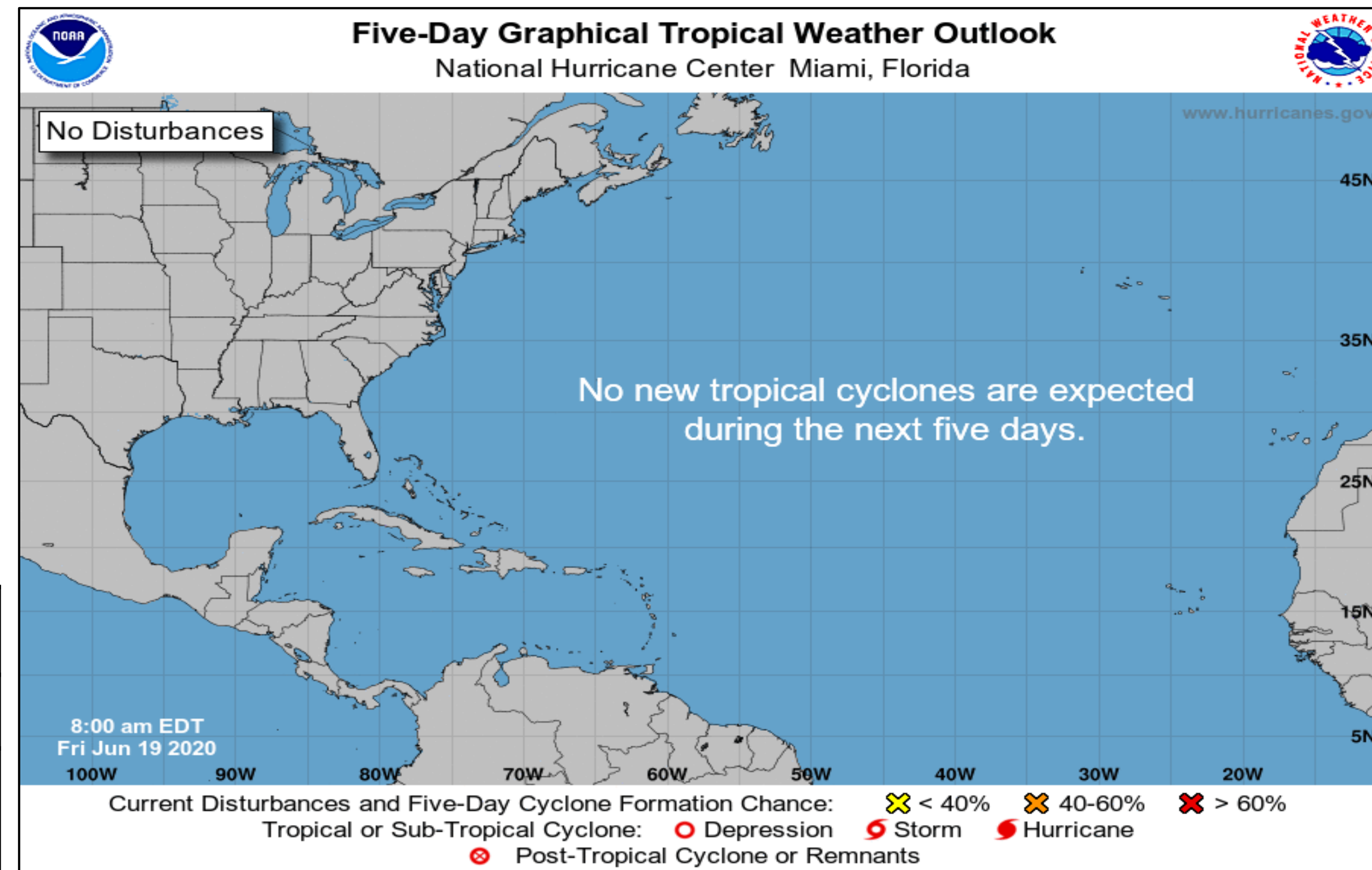
SR ROC
REGIONAL OPERATIONS CENTER

Areas of Possible Development

Area	Chance of Development	Potential Impacts to FEMA 6
-		

Active Tropical Cyclones

Storm	Potential Impacts to FEMA 6
-	

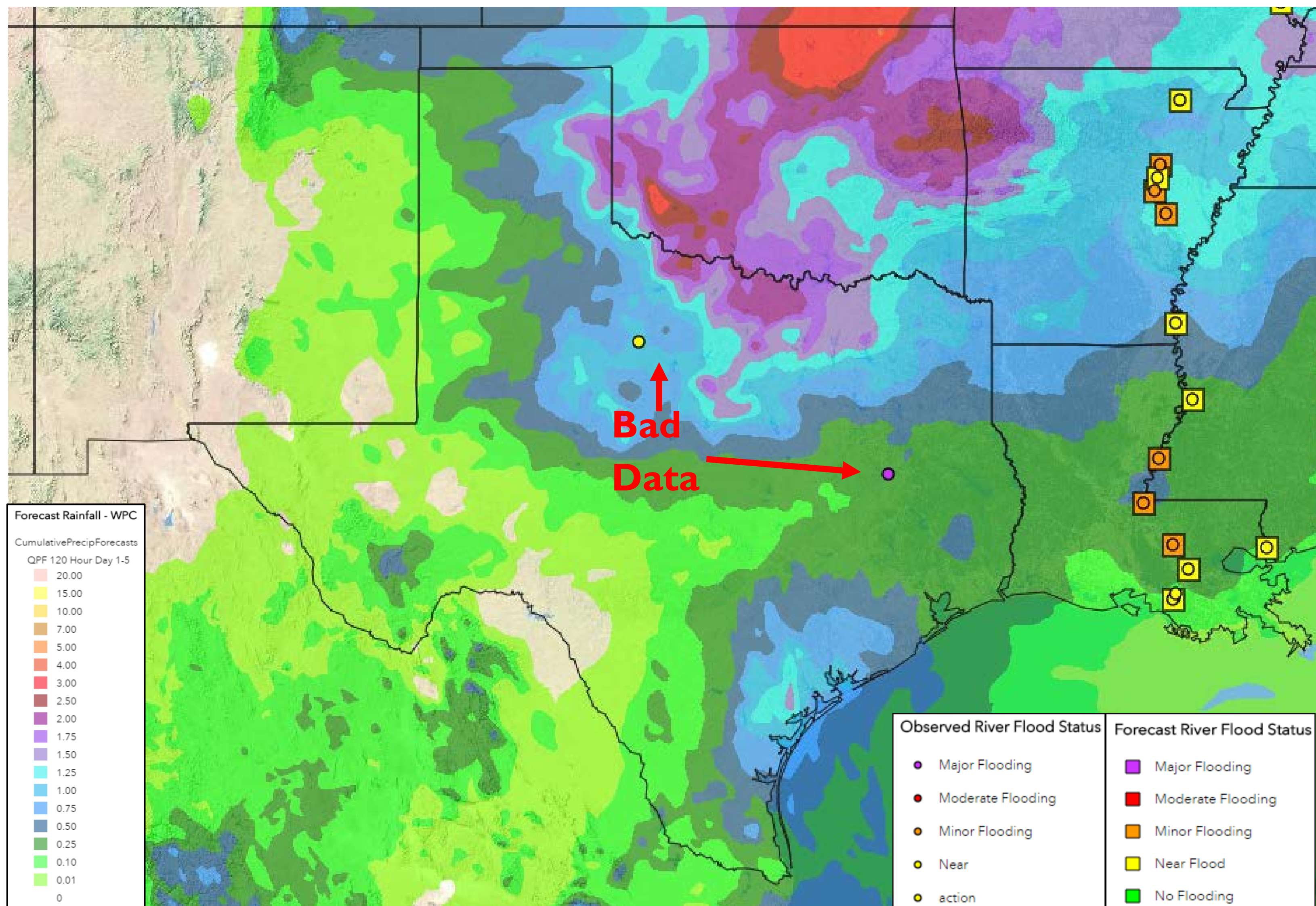


5-Day Precipitation Forecast & River Flood Status



SR ROC
REGIONAL OPERATIONS CENTER

Note: Even though the image displays 5 days of forecasted rainfall, river forecasts only include 1-2 days of rainfall



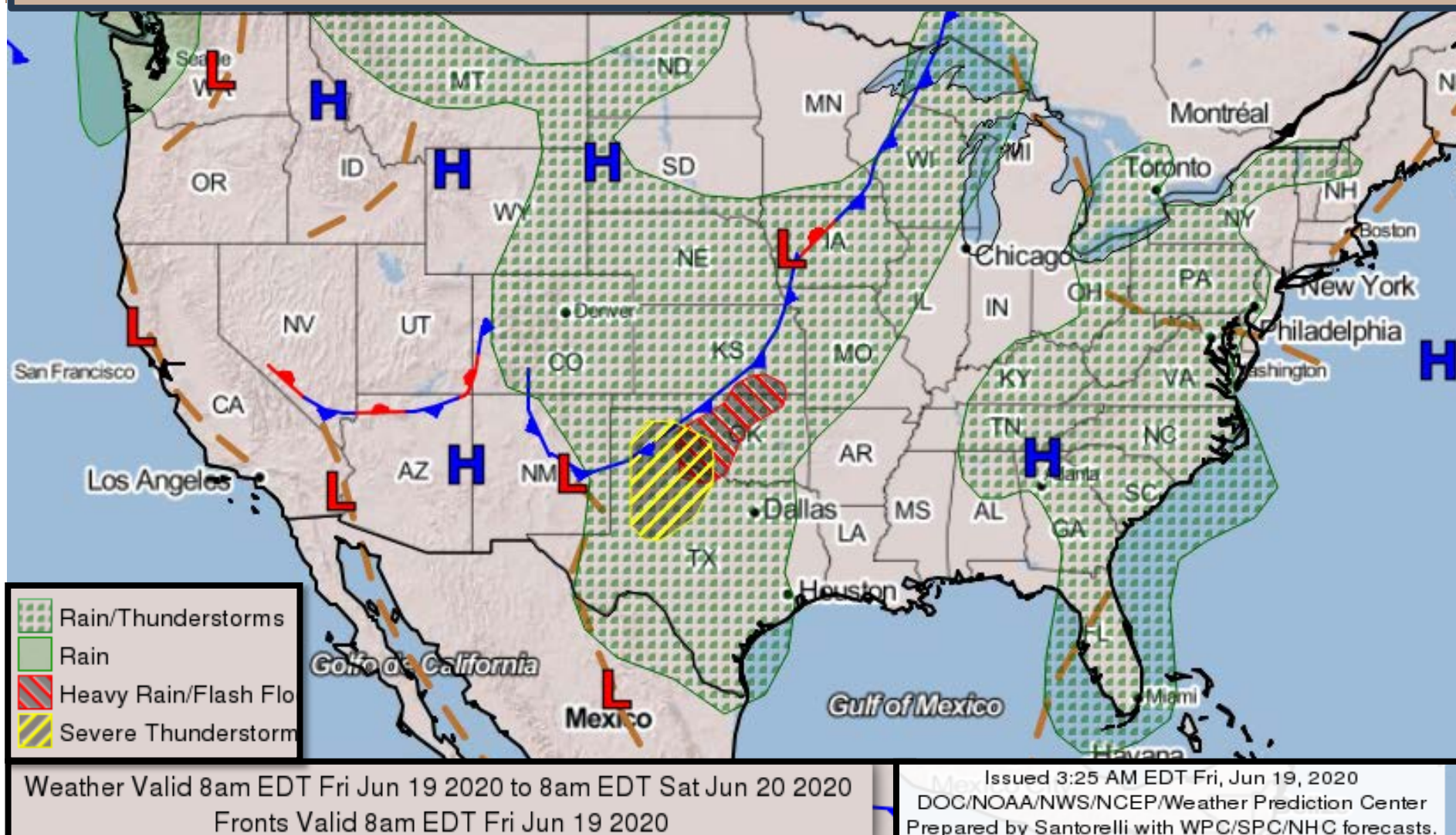
Portions of the White and Black Rivers in E AR remain in minor flood stage with impacts primarily to farmland.

The Atchafalaya River at Morgan City in S LA remains in/near minor flood stage throughout this week with impacts primarily to vessel traffic.

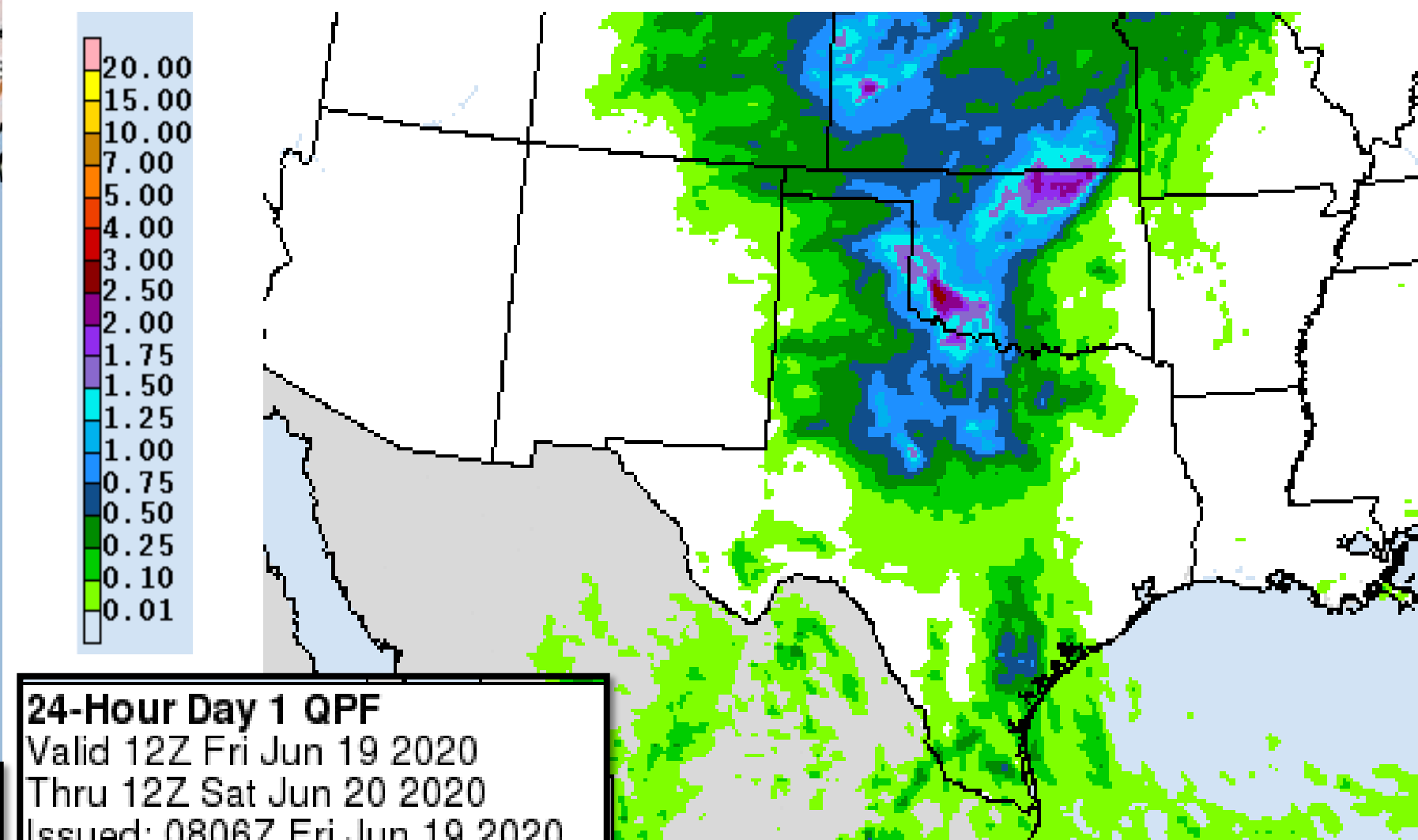
The Lower MS River continues in minor flood stage. Impacts are to access roads, river traffic, and industrial activity on the river.

Today's Weather

Forecast Chart



Forecast Rainfall



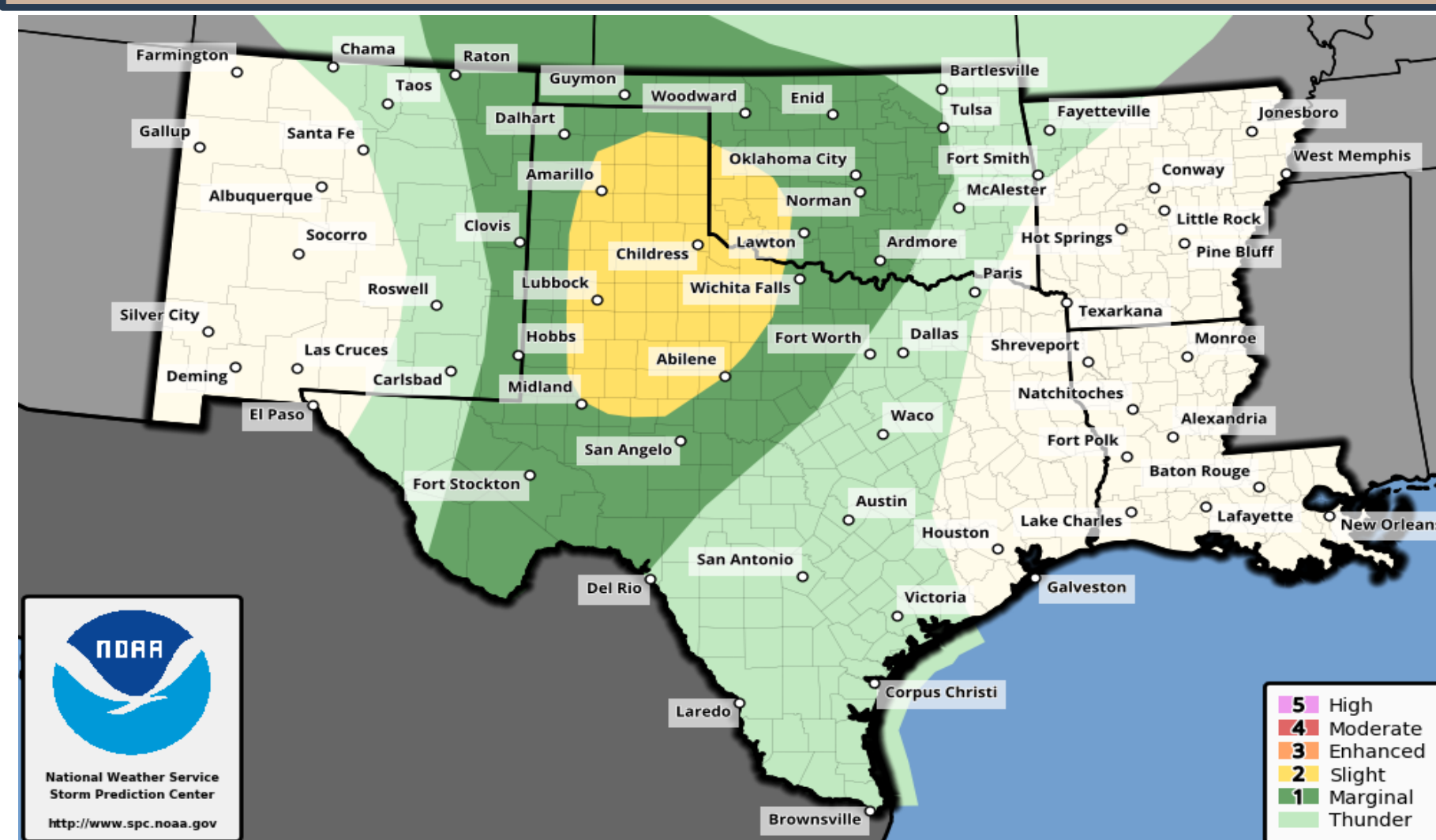
SR ROC
REGIONAL OPERATIONS CENTER

Severe thunderstorms(hail and wind) possible across W TX.

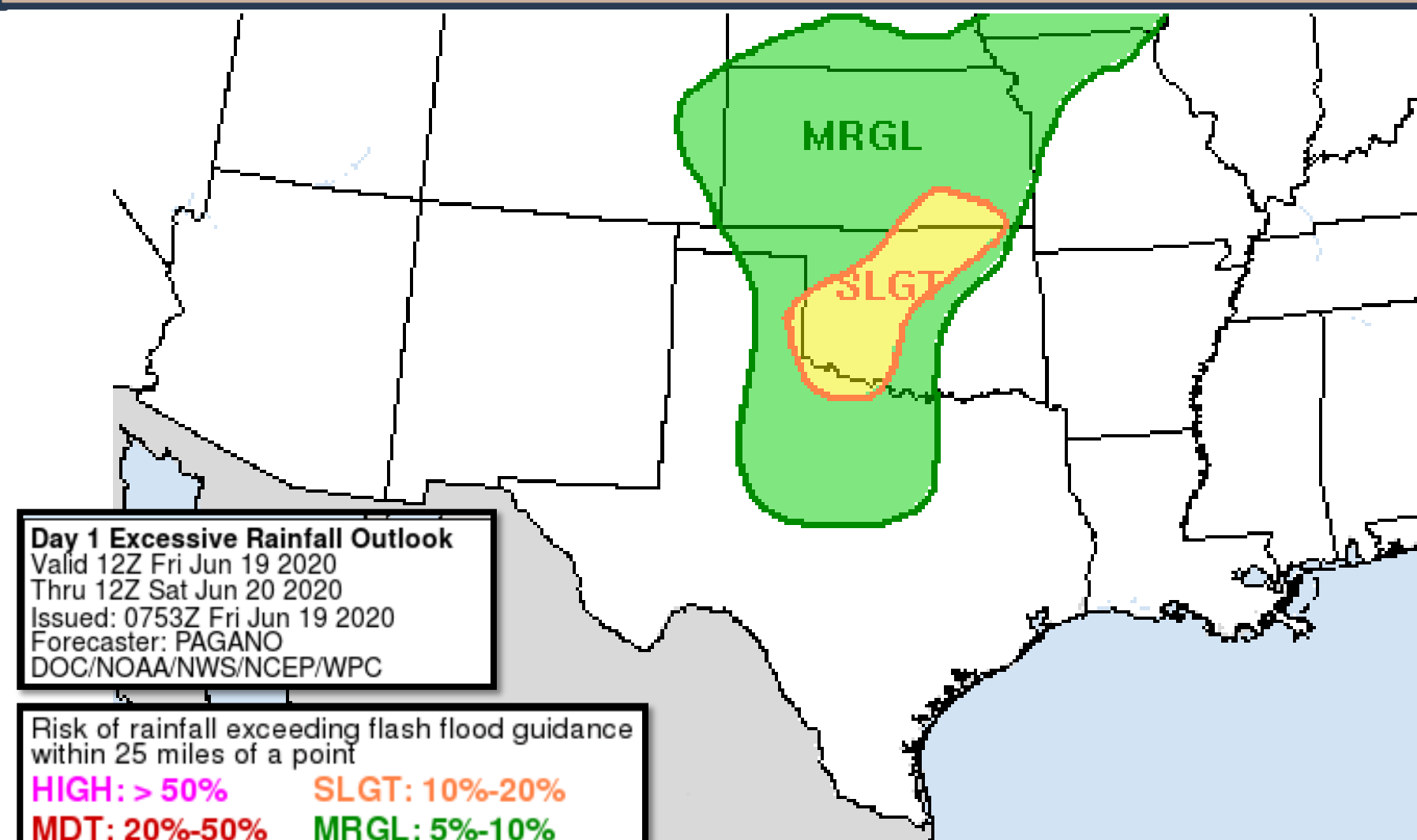
Isolated strong/severe thunderstorms across E NM/ NW TX/OK.

Isolated heavy rainfall and flash flooding across parts of TX/OK.

Severe Weather Outlook



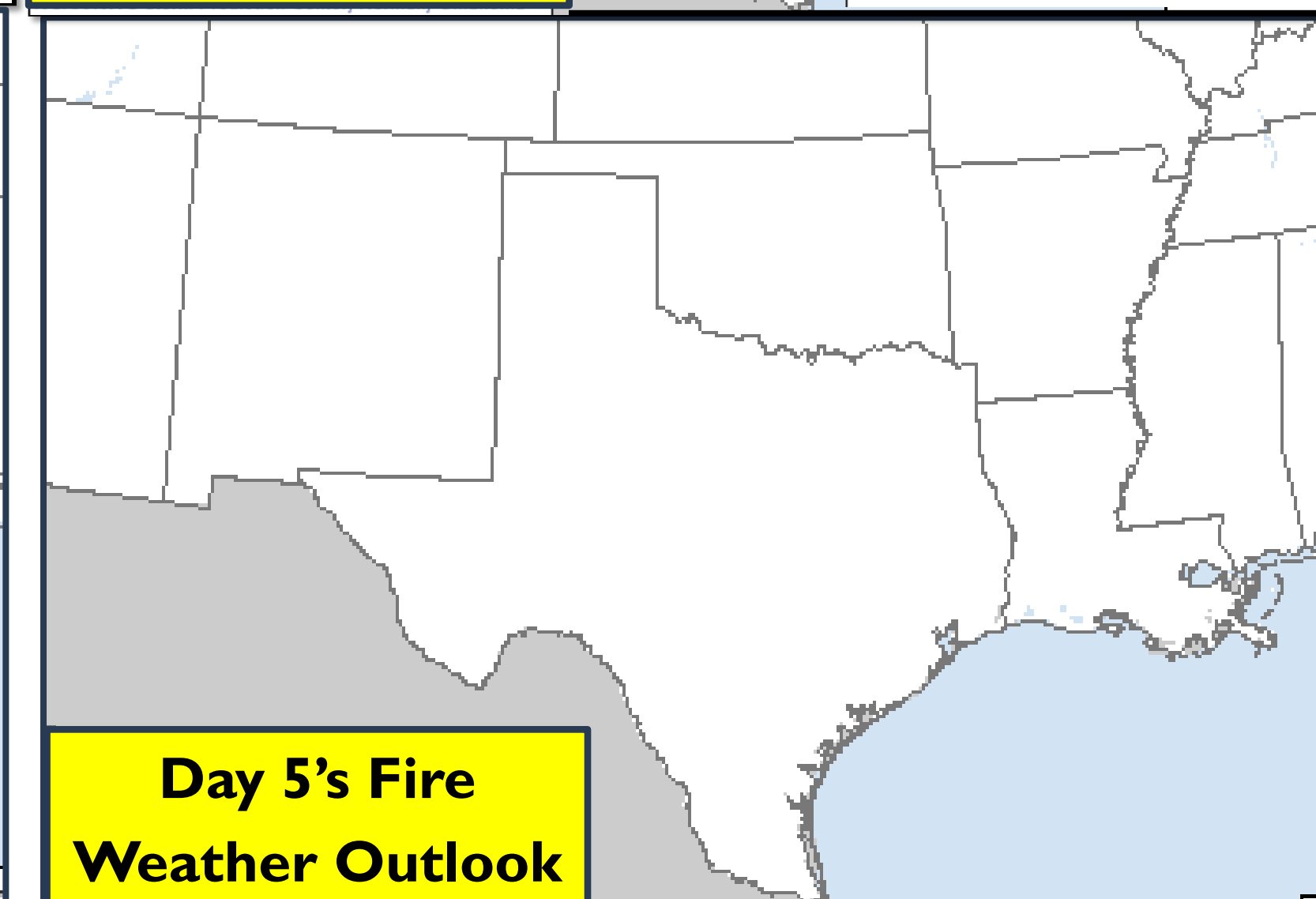
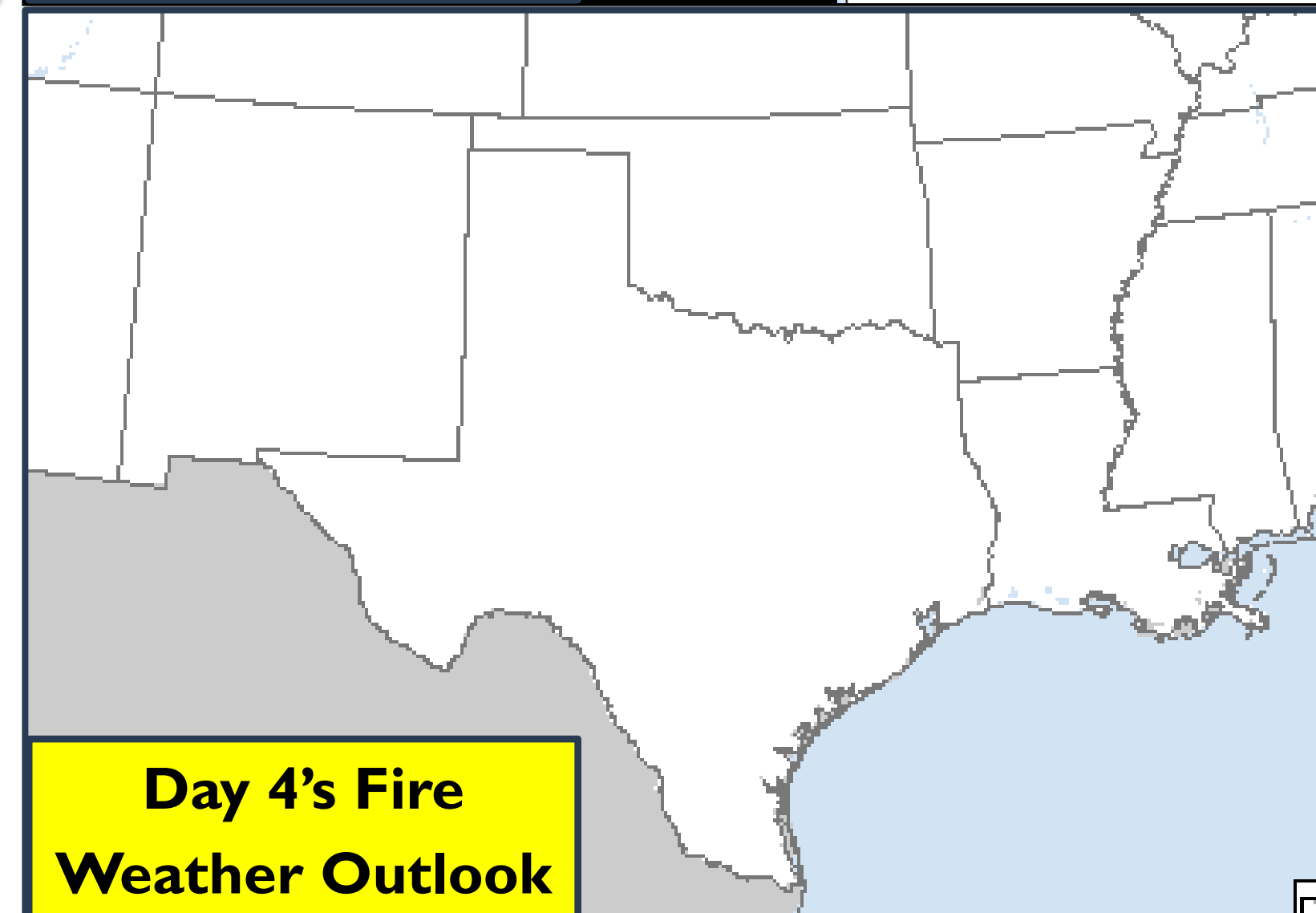
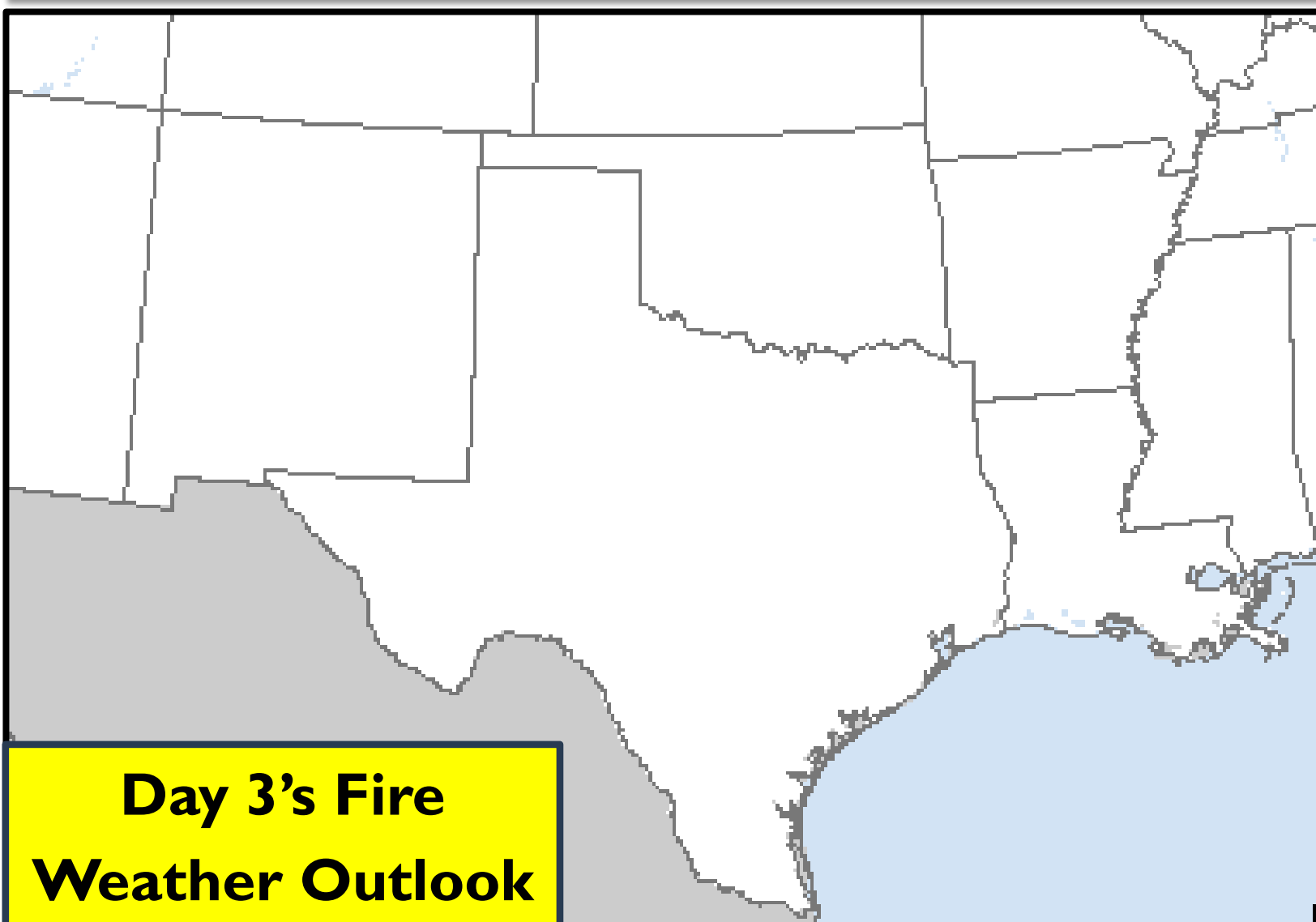
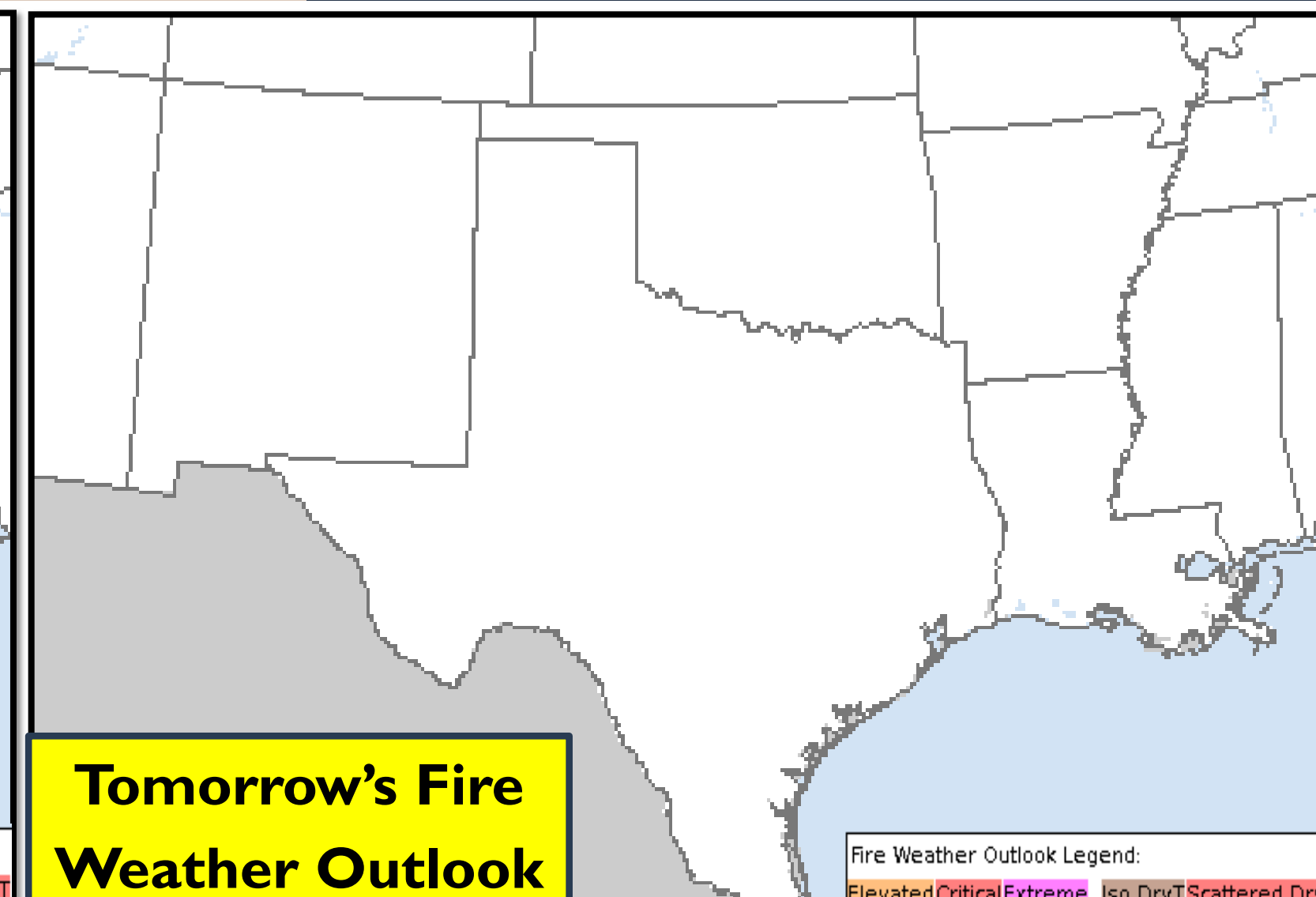
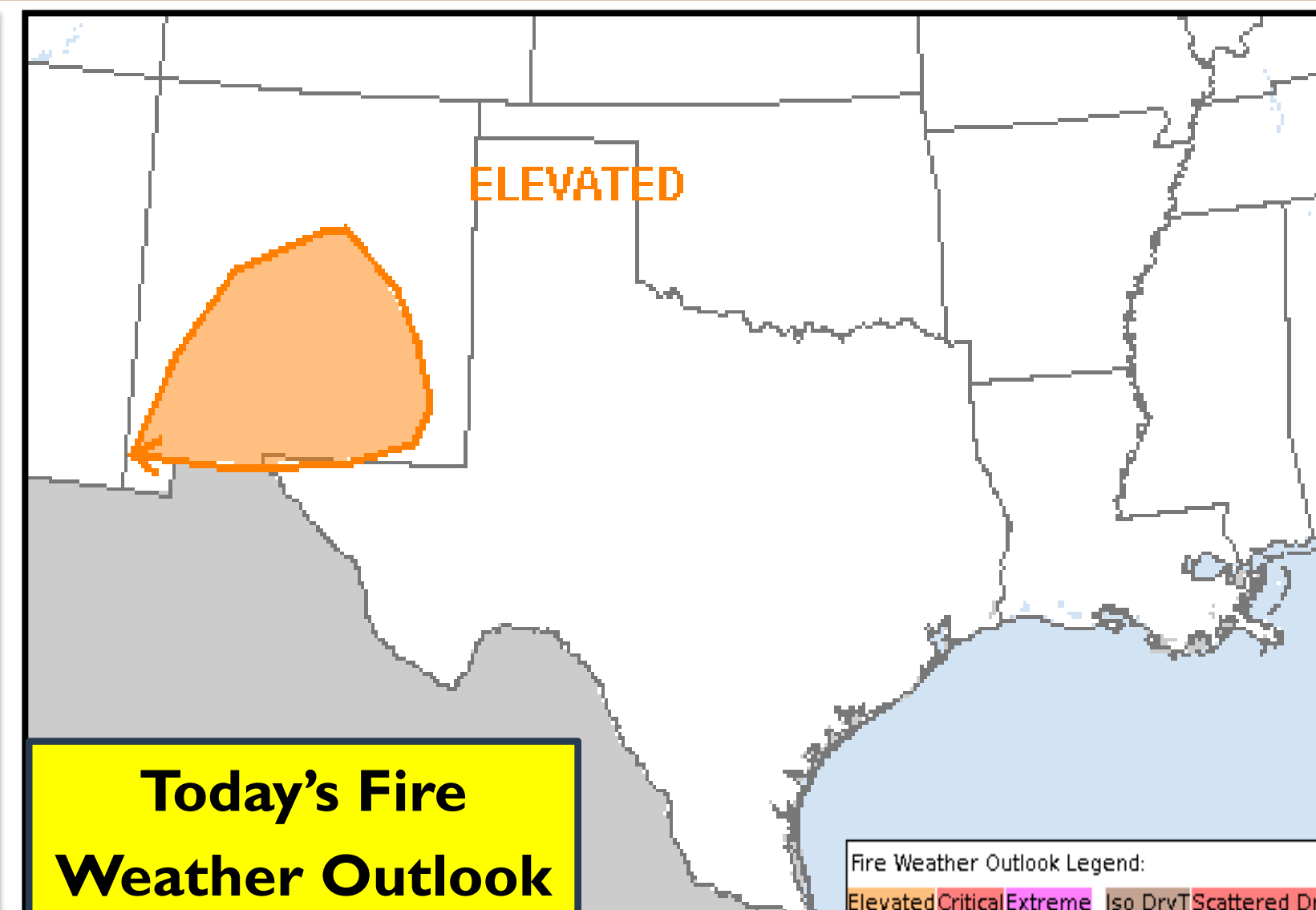
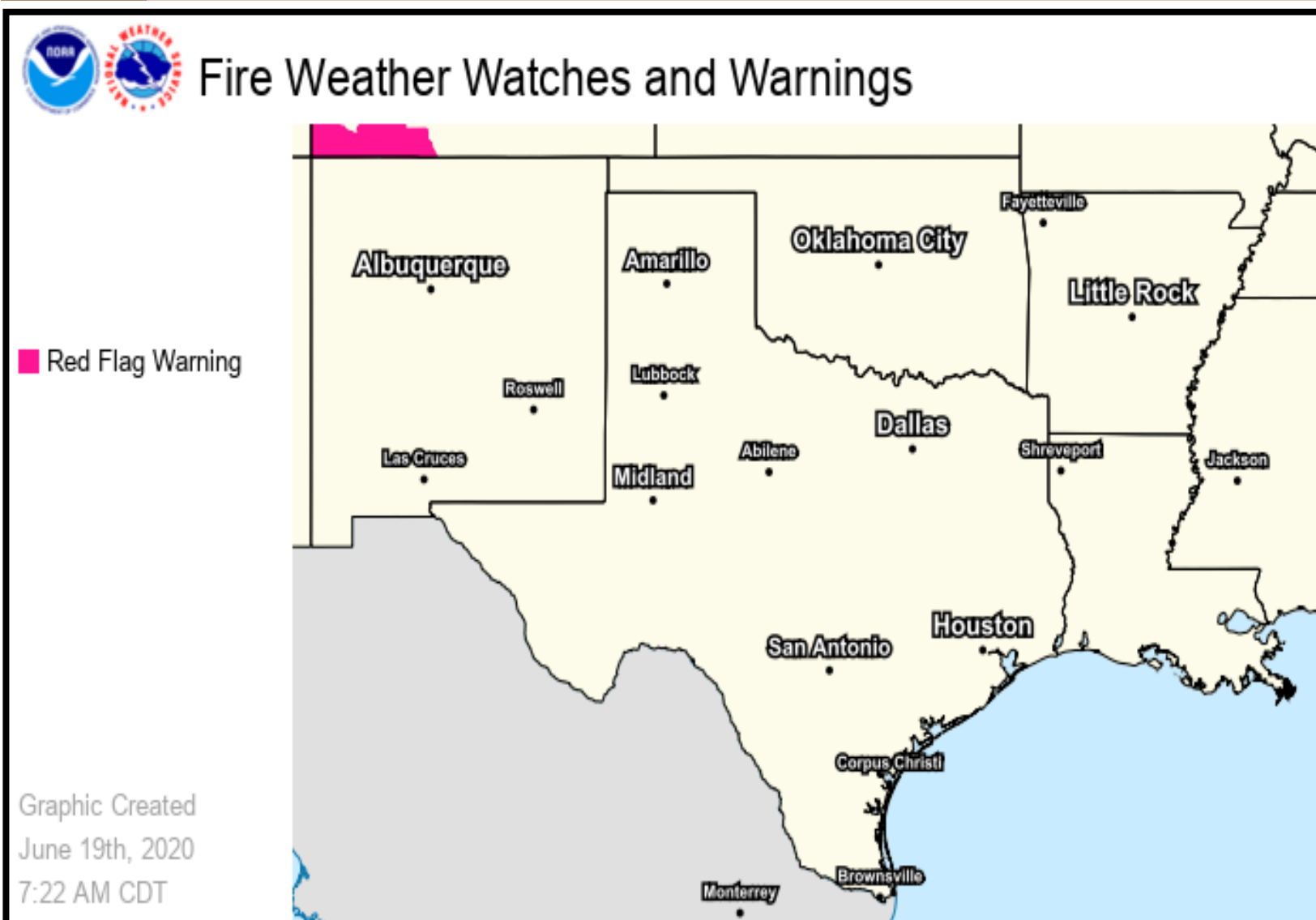
Excessive Rainfall Outlook



Fire Weather Outlooks



SR ROC
REGIONAL OPERATIONS CENTER



Tomorrow's Weather

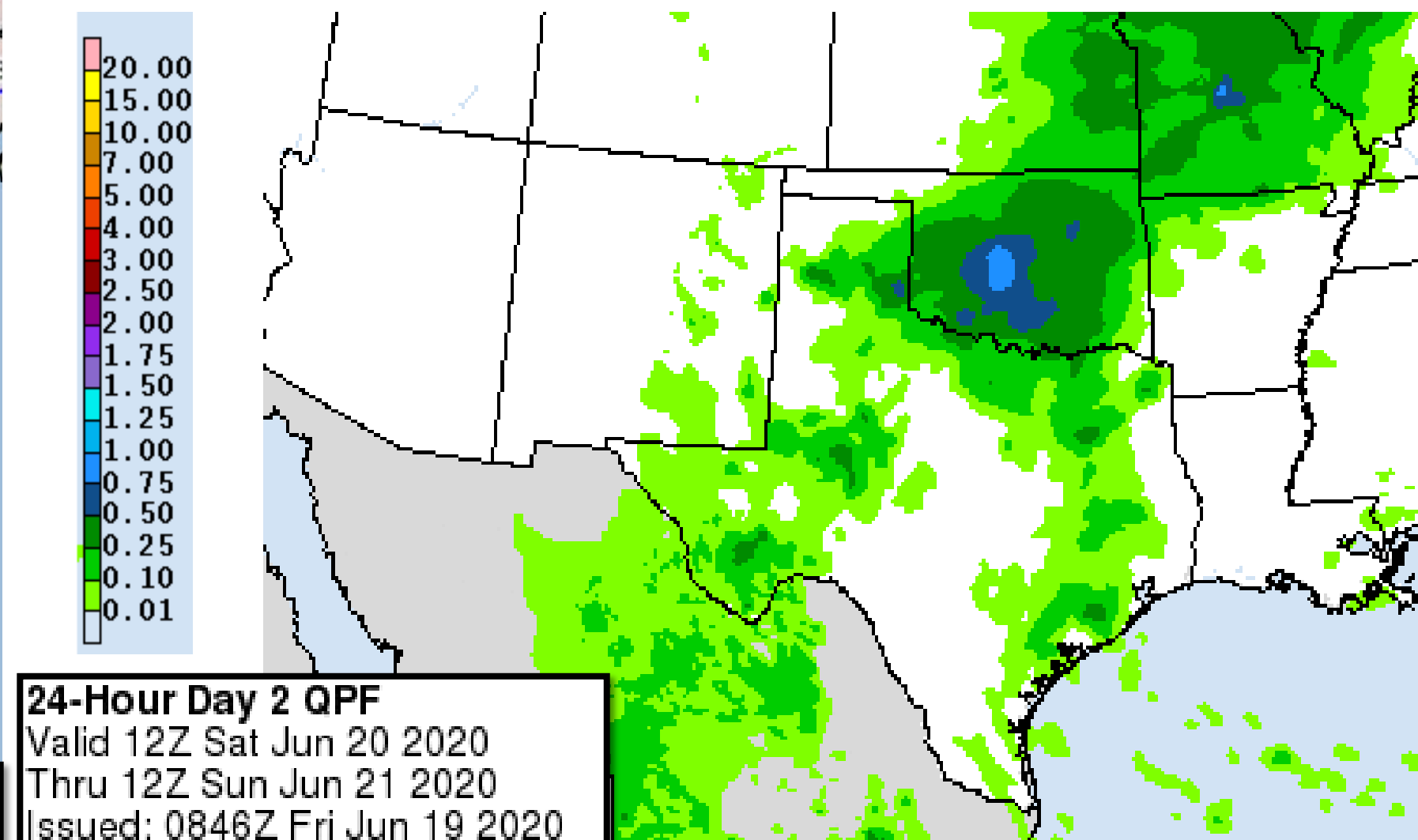
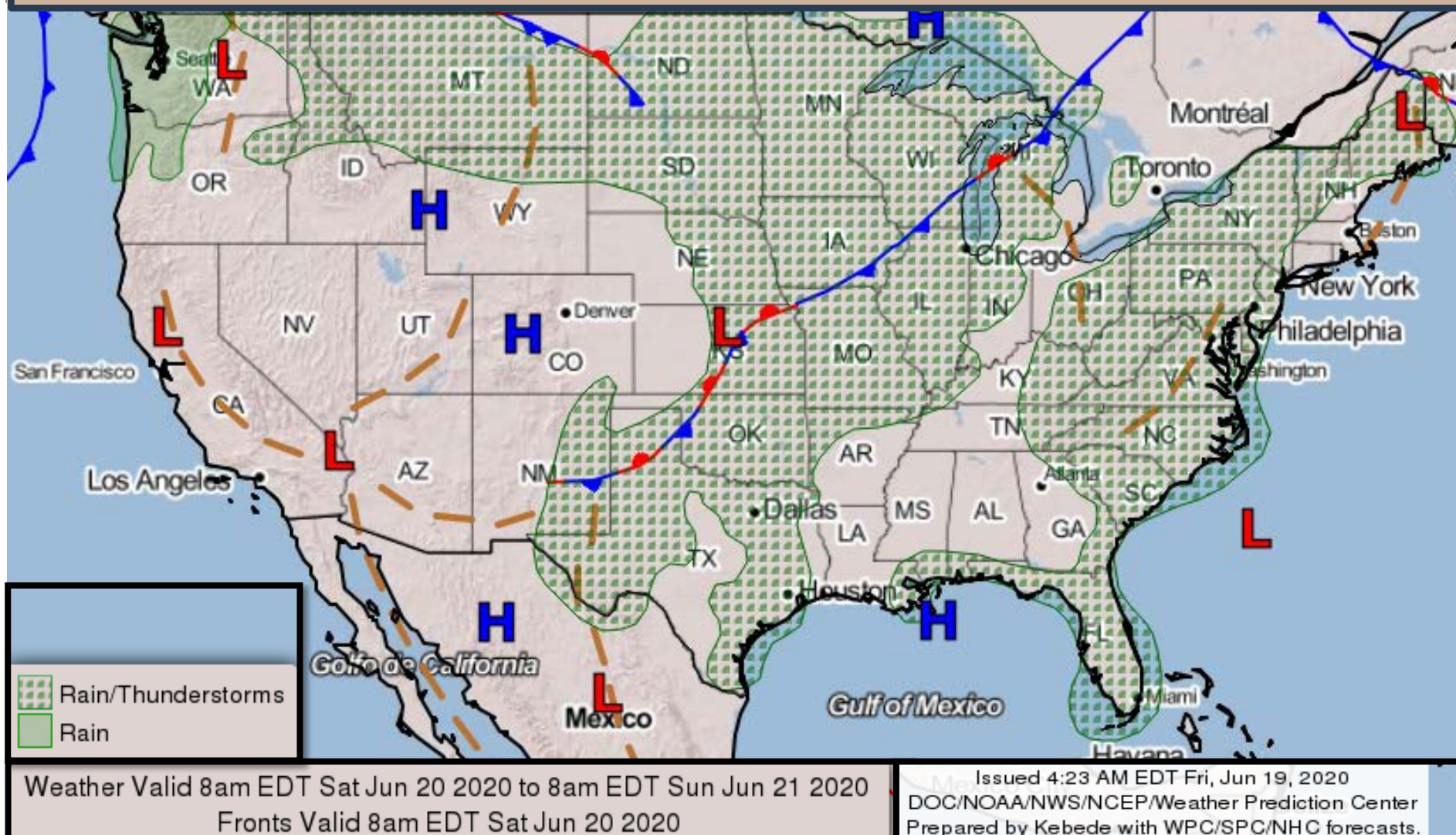


SR ROC
REGIONAL OPERATIONS CENTER

Forecast Chart

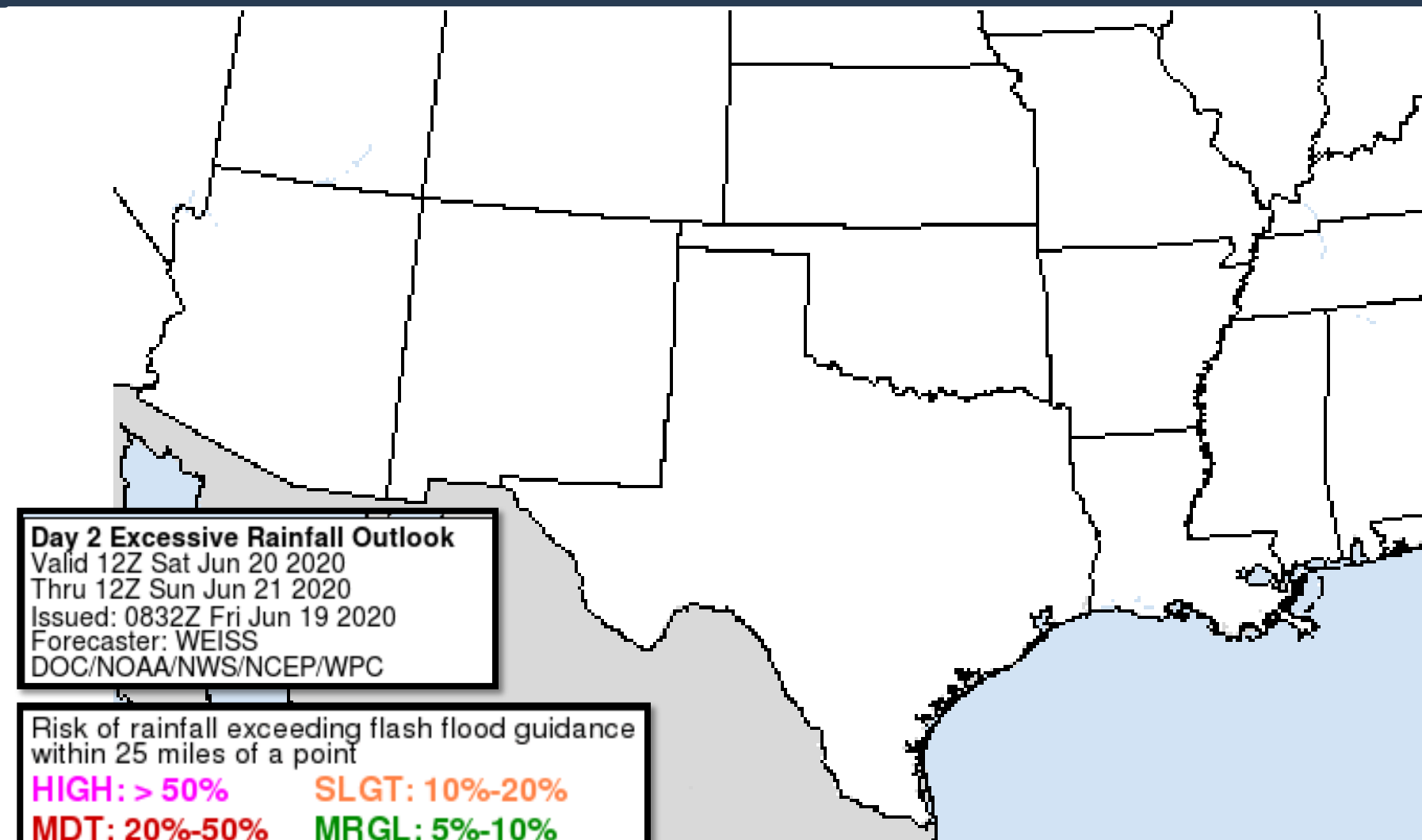
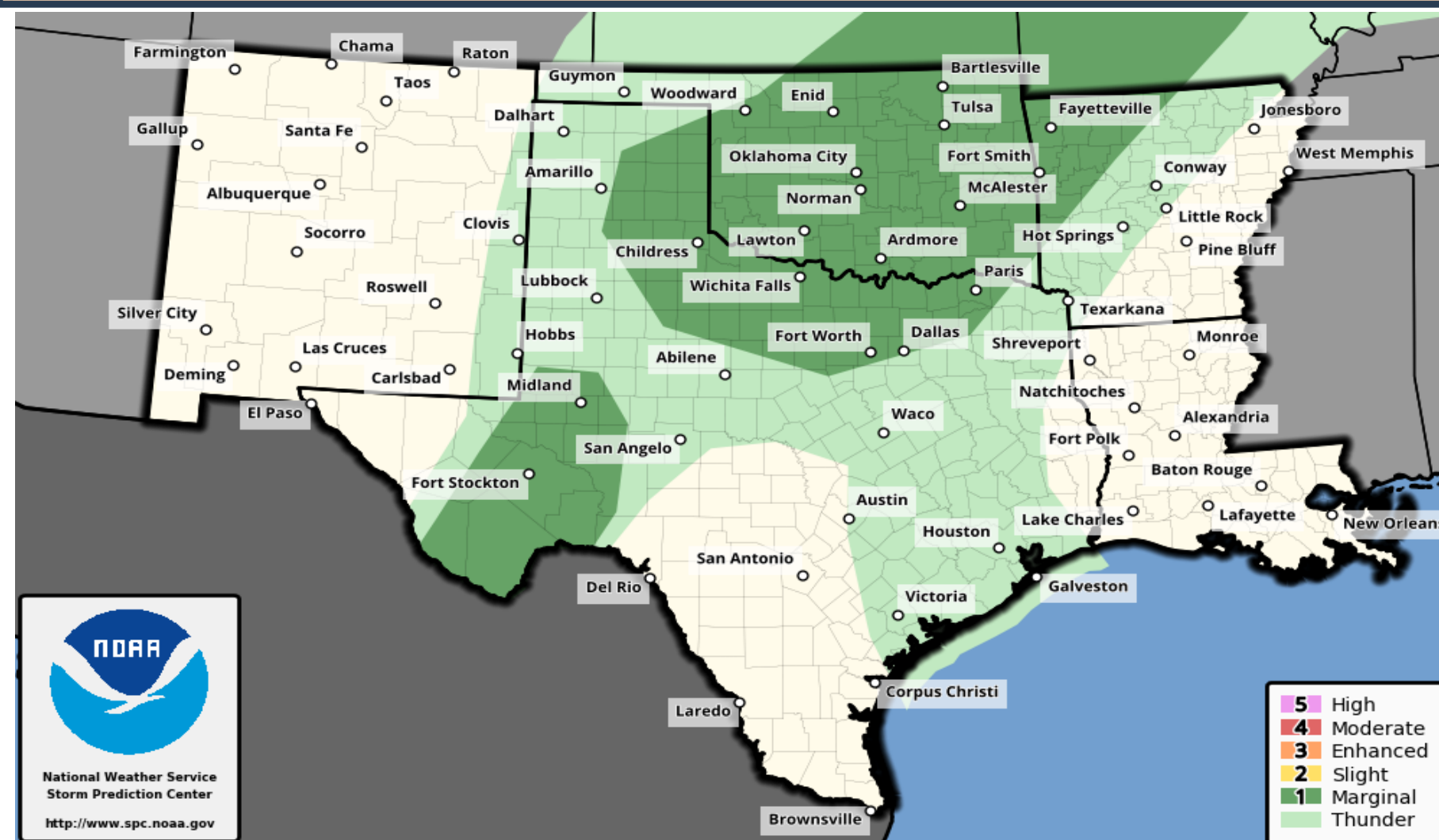
Forecast Rainfall

Isolated strong/severe
thunderstorms across SW TX
and OK.



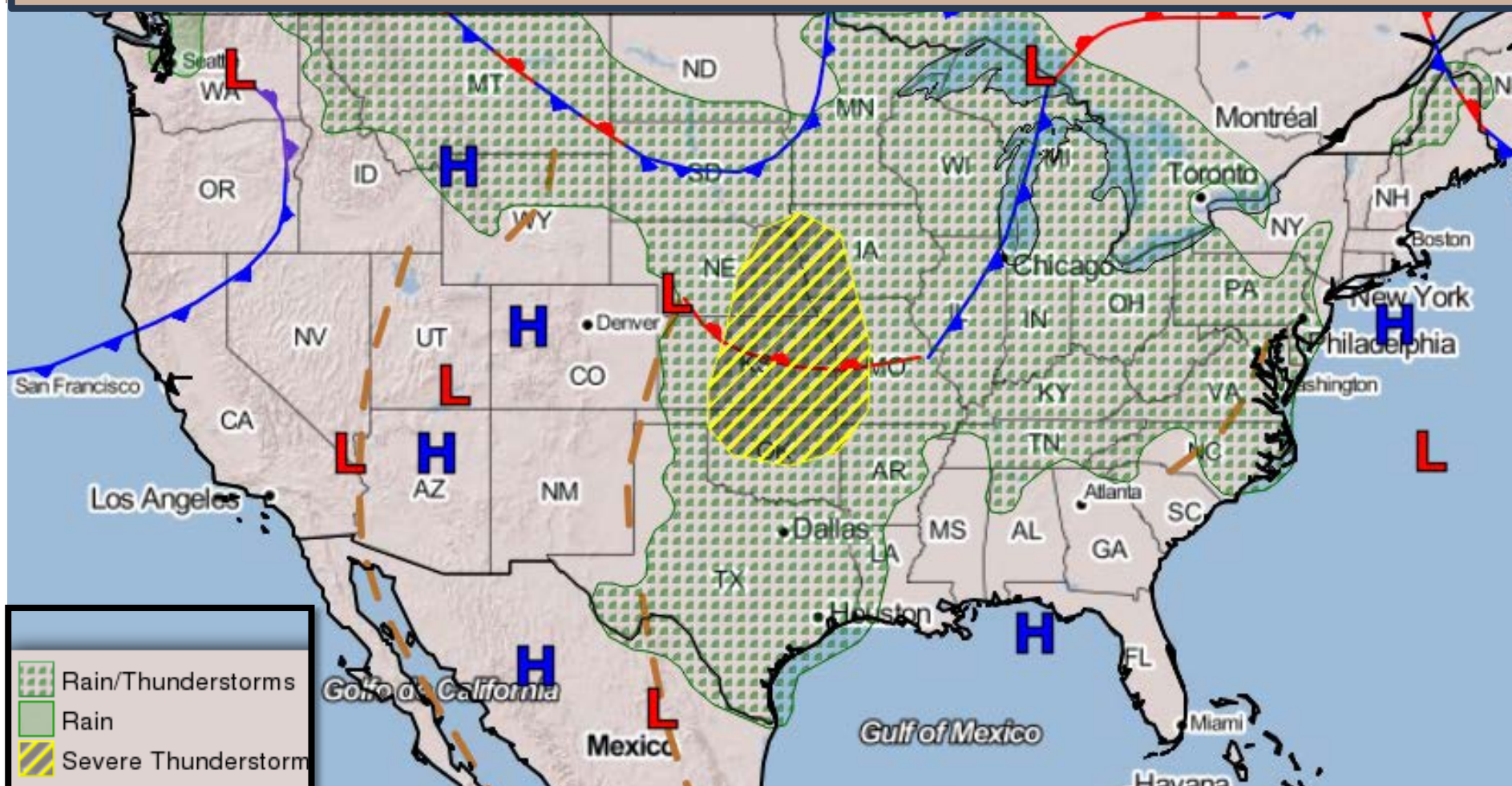
Severe Weather Outlook

Excessive Rainfall Outlook



Sunday's Weather

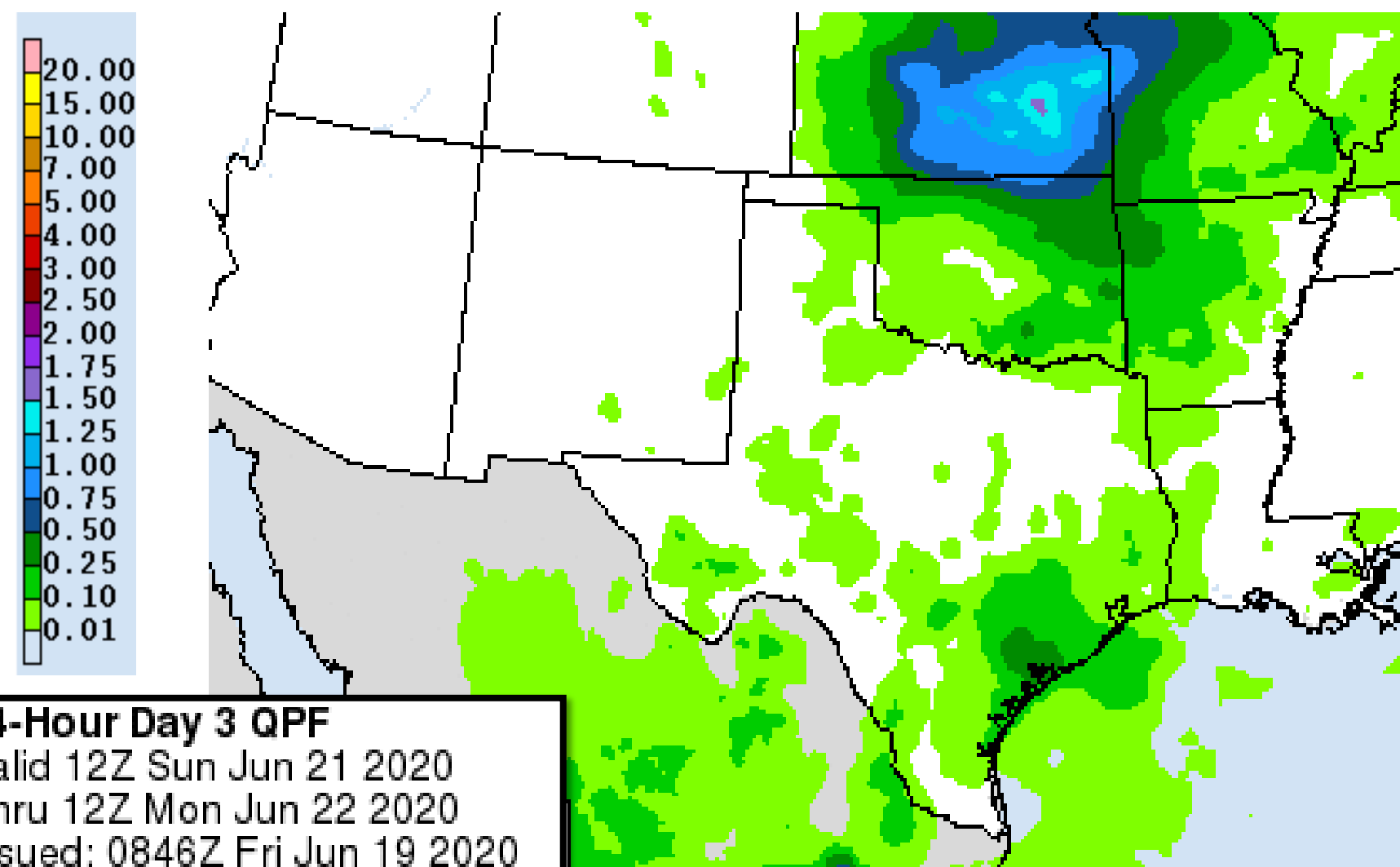
Forecast Chart



Weather Valid 8am EDT Sun Jun 21 2020 to 8am EDT Mon Jun 22 2020
Fronts Valid 8am EDT Sun Jun 21 2020

Issued 4:29 AM EDT Fri, Jun 19, 2020
DOC/NOAA/NWS/NCEP/Weather Prediction Center
Prepared by Kebede with WPC/SPC/NHC forecasts.

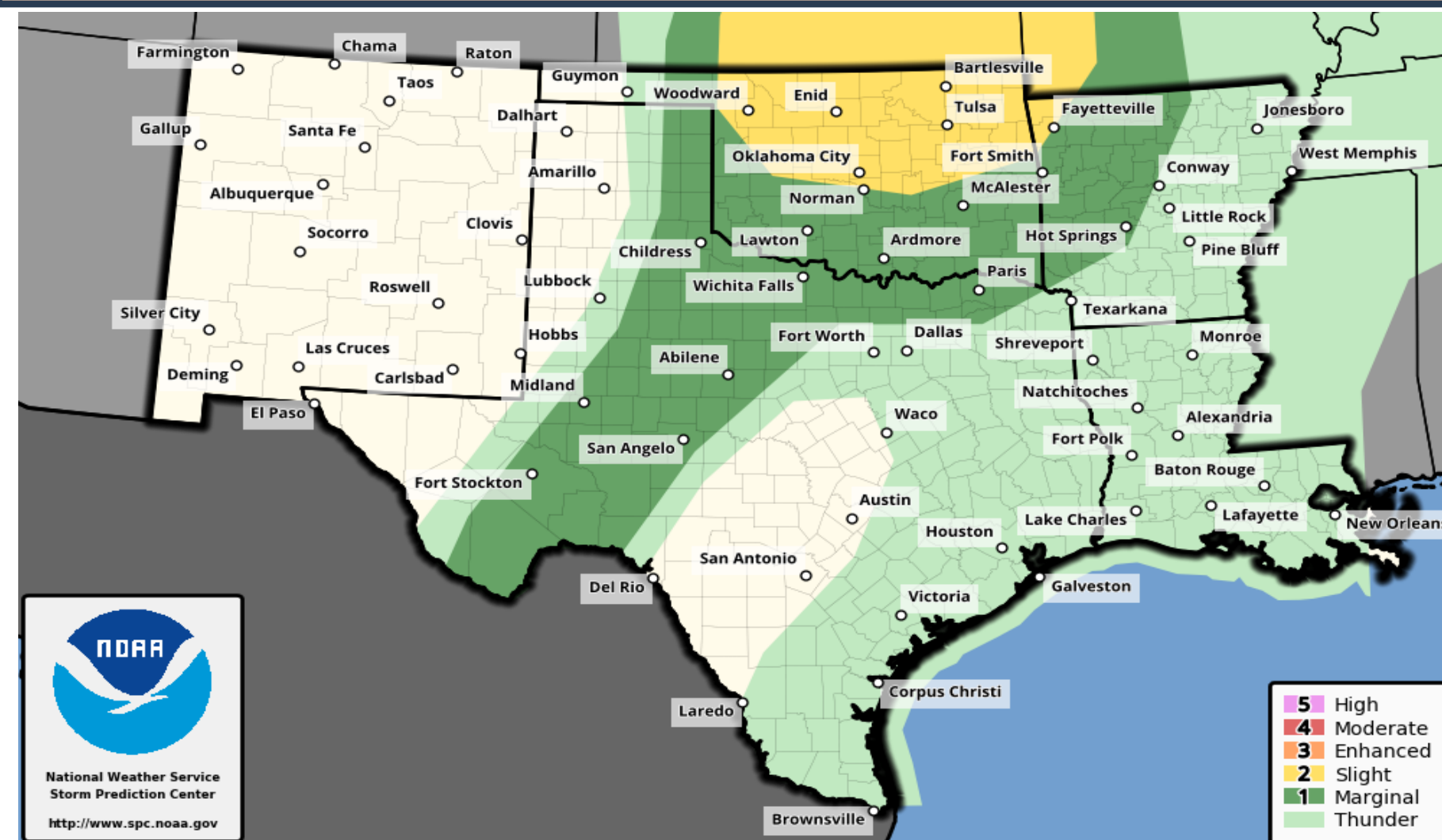
Forecast Rainfall



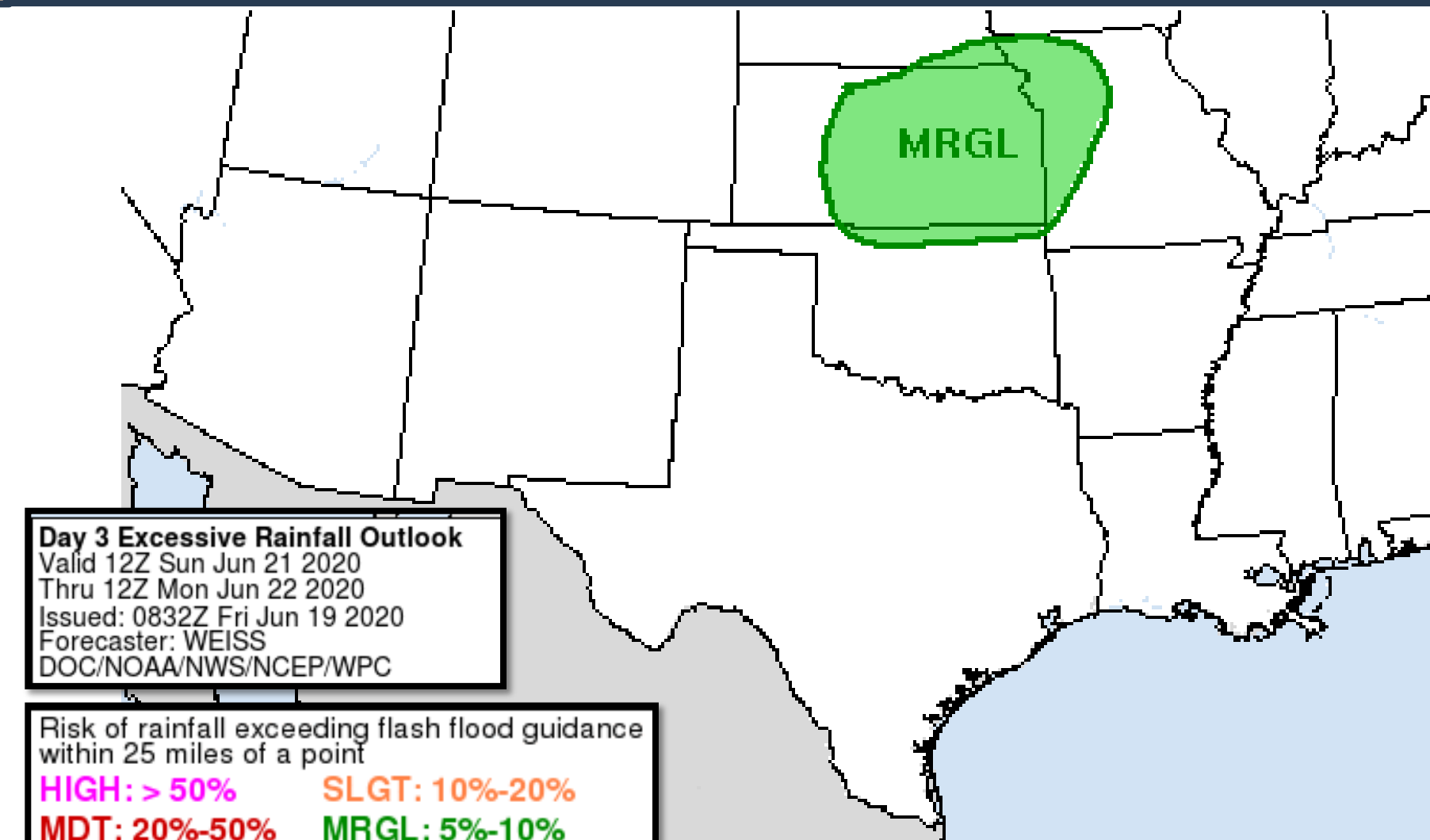
SR ROC
REGIONAL OPERATIONS CENTER

**Severe thunderstorms across
OK into WTX.**

Severe Weather Outlook



Excessive Rainfall Outlook



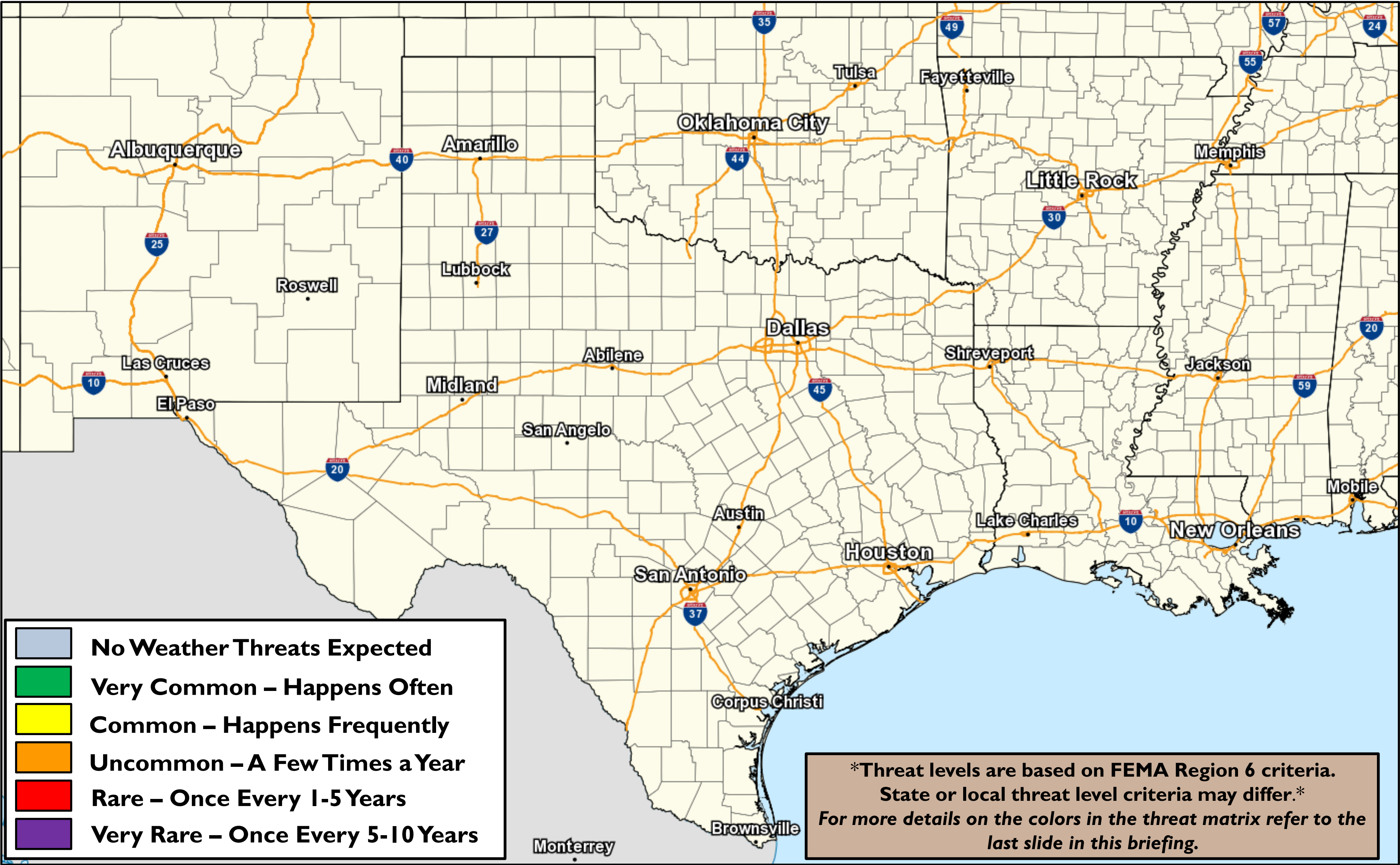
Days 4-5 Weather Hazards

Monday - Tuesday



SR ROC
REGIONAL OPERATIONS CENTER

No significant weather expected.



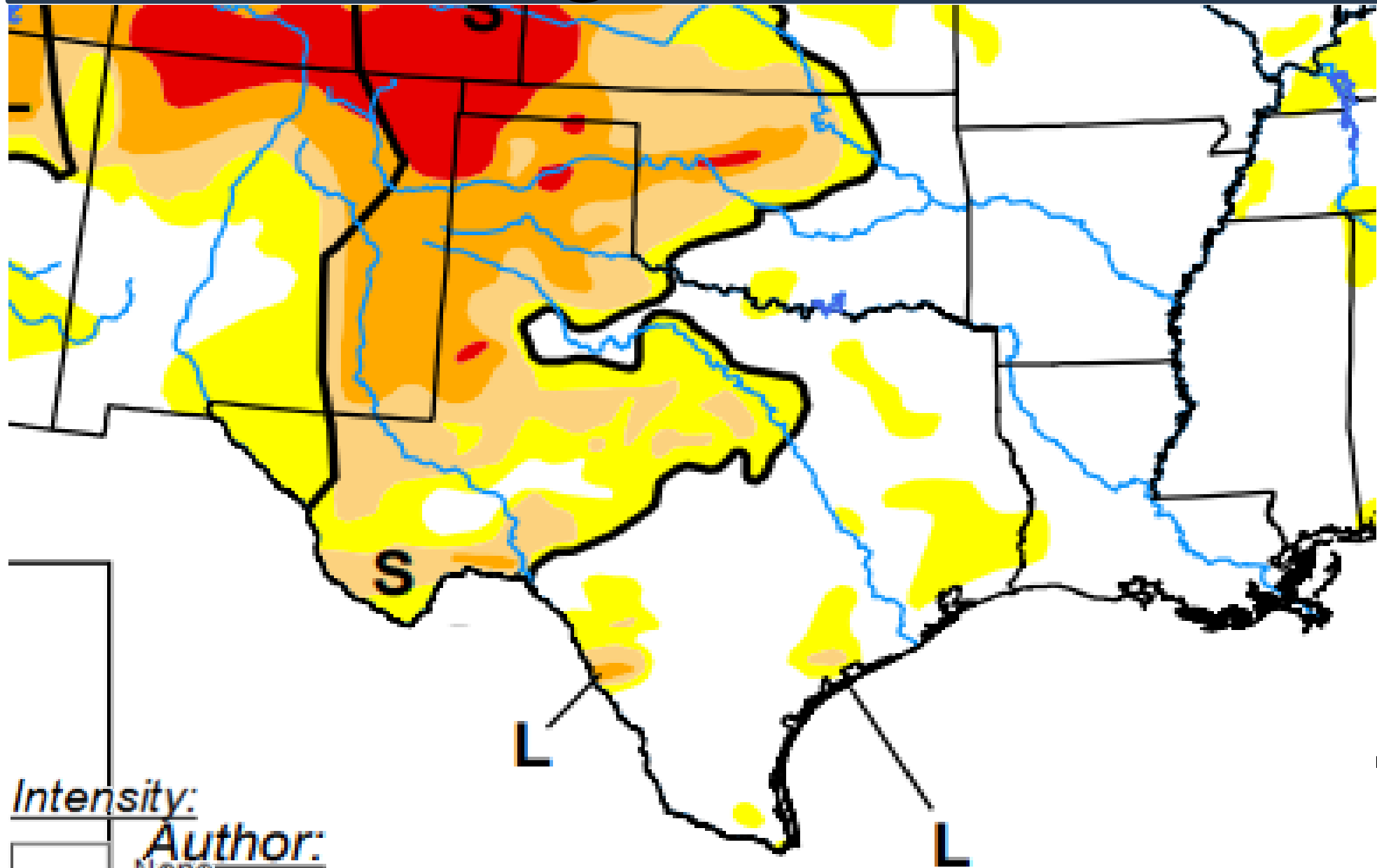
Drought Monitor (Released Jun 18, 2020)



SR ROC
REGIONAL OPERATIONS CENTER

Data valid as of 8 am ET on Tuesday, June 16, 2020

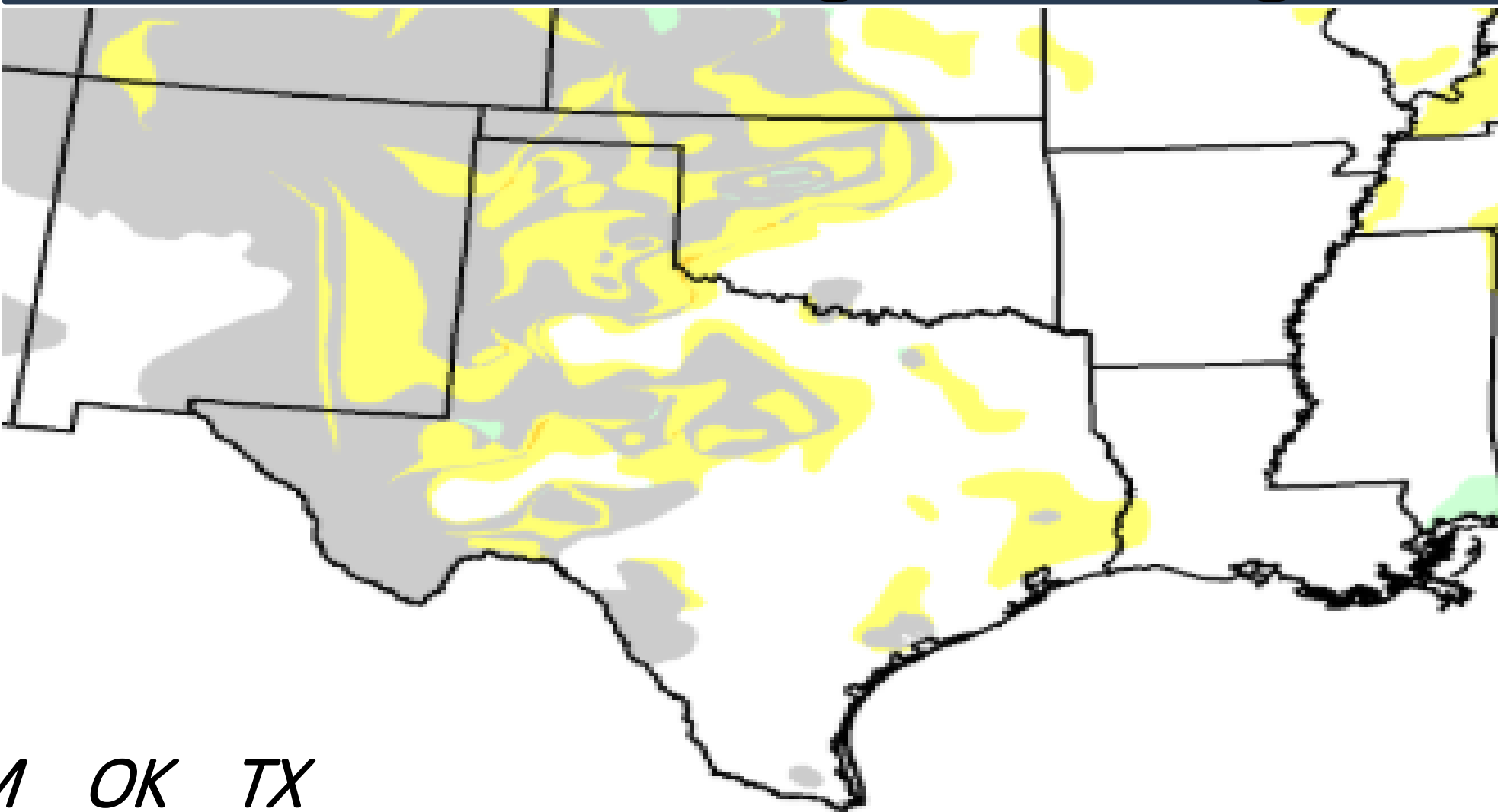
Drought Monitor



- Intensity:**
- None
 - D0 Abnormally Dry
 - D1 Moderate Drought
 - D2 Severe Drought
 - D3 Extreme Drought
 - D4 Exceptional Drought

The Drought Monitor focuses on broad-scale conditions. Local conditions may vary. See accompanying text summary for forecast statements.

One Week Change in Drought



- 5 Class Degradation
- 4 Class Degradation
- 3 Class Degradation
- 2 Class Degradation
- 1 Class Degradation
- No Change
- 1 Class Improvement
- 2 Class Improvement
- 3 Class Improvement
- 4 Class Improvement
- 5 Class Improvement

	AR	LA	NM	OK	TX
	0.00	0.00	11.23	4.26	1.39
Last Week 06-09-2020	0.00	0.00	8.91	3.92	0.58
3 Months Ago 03-17-2020	0.00	0.00	0.00	0.00	6.96
One Year Ago 06-18-2019	0.00	0.00	0.00	0.00	0.00

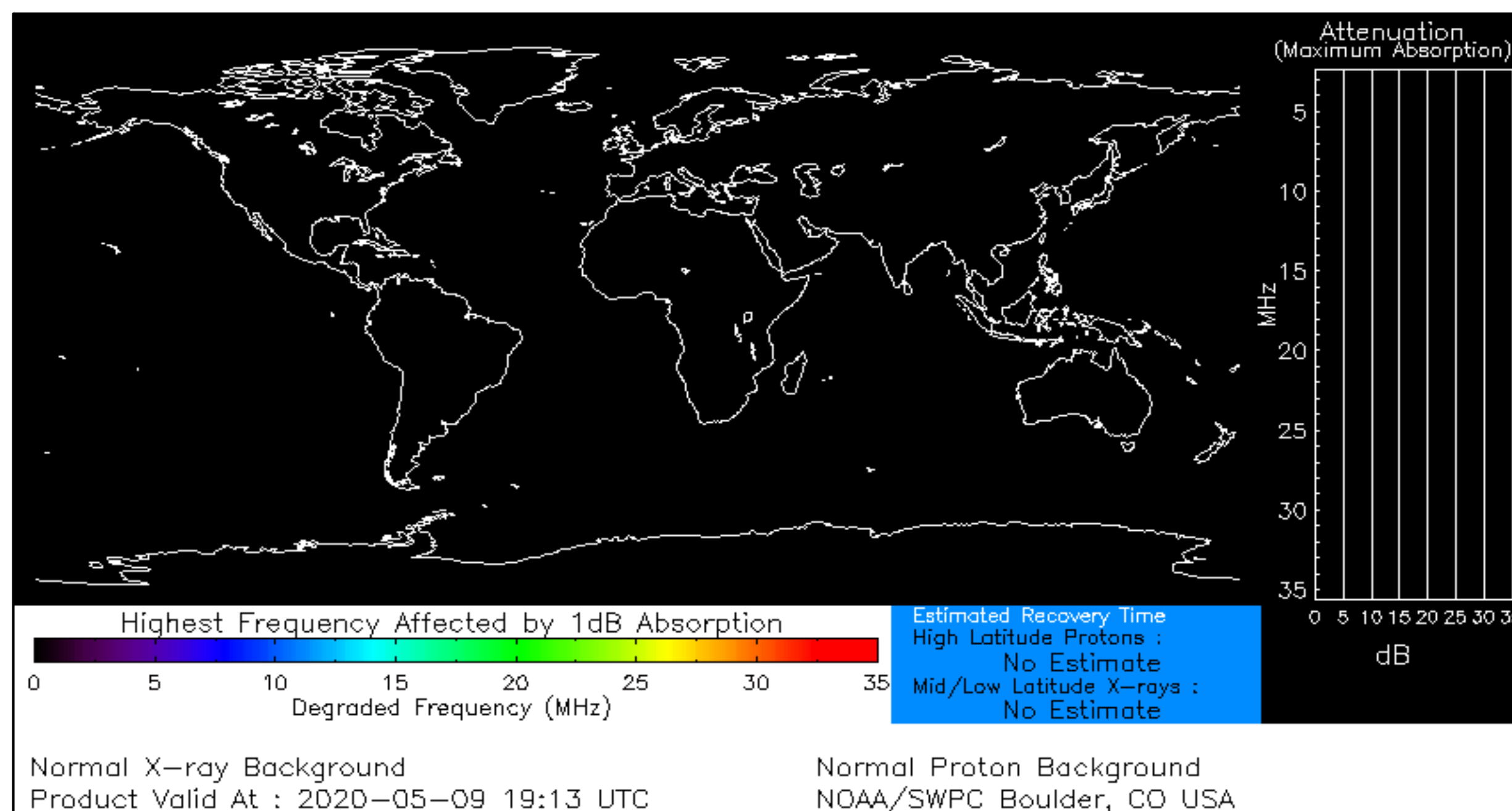
Drought Conditions (Percent Area)
D3-D4 (Extreme to Exceptional Drought)

Space Weather 3-Day Forecast



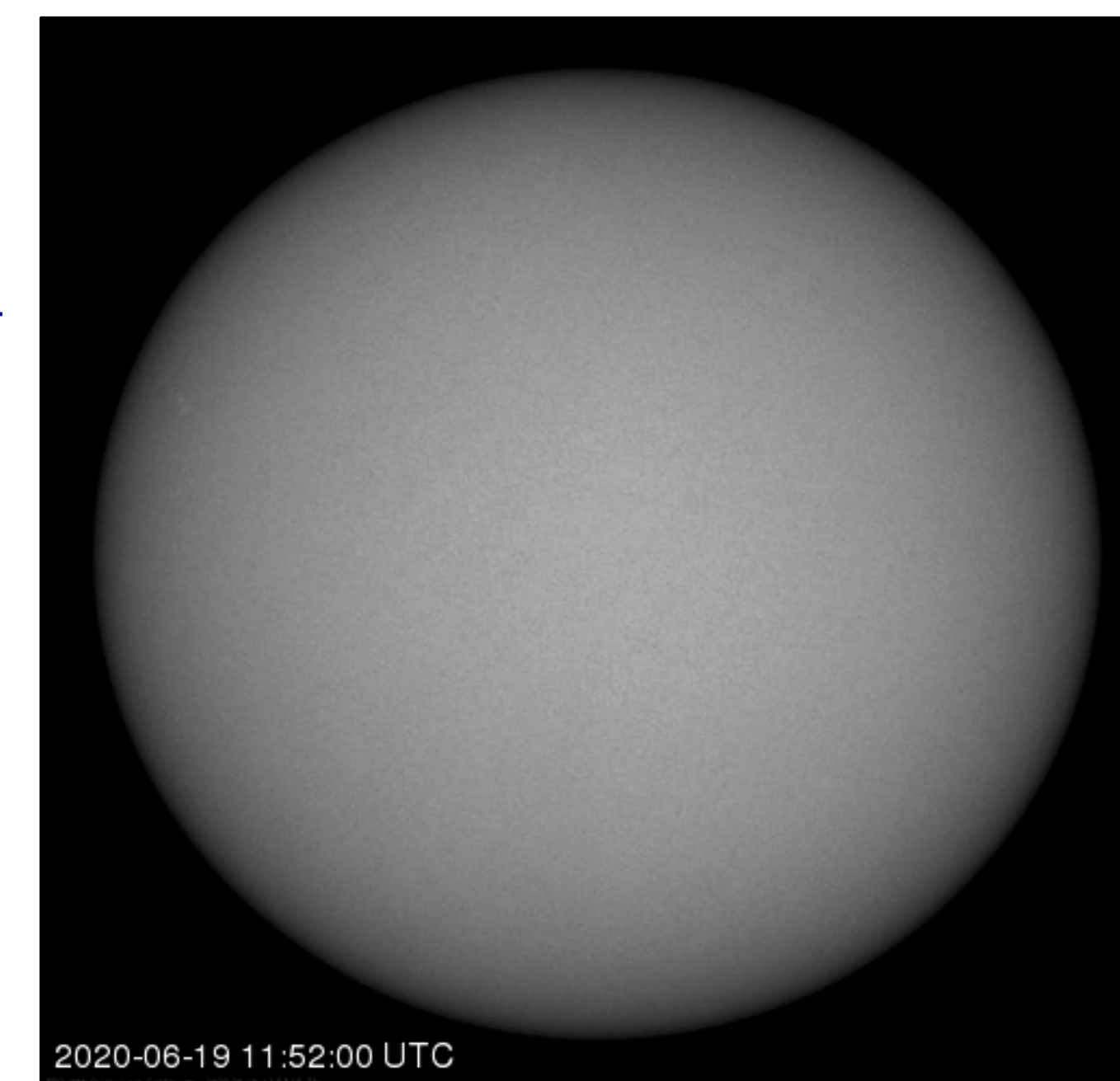
SR ROC
REGIONAL OPERATIONS CENTER

	Friday	Saturday	Sunday
Geomagnetic Storms	Quiet (Max Kp = 2)	Quiet (Max Kp = 2)	Quiet (Max Kp = 2)
Solar Radiation Storm (S1-S5)	1%	1%	1%
Radio Blackout (R1-R2)	1%	1%	1%
Radio Blackout (R3-R5)	1%	1%	1%



[Click here for a
Description of the Space
Weather Storm Scales](#)

[Click here for the Latest
3-Day Space Weather
Forecast Text](#)





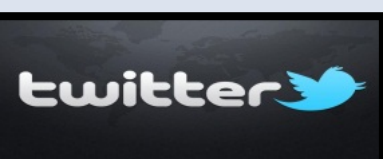
For more information, please contact:

**National Weather Service
Southern Region Headquarters
Regional Operations Center
Fort Worth, TX**

Phone: (682) 703-3747

E-mail: sr-srh.roc@noaa.gov

Web: <http://www.weather.gov/srh>



Weather “Threat” Matrix			
Color	Definition	Criteria	Example(s)
Green	Very Common Safety: Rarely a Direct Threat to Life and Property Impact Potential: Typically Results in Little Inconvenience to Daily Routines	Severe: Marginal Risk from SPC Flooding: Minor flooding expected over localized areas Tropical: None Fire Weather: No Watches/Warnings, fuel moisture above 10% or green up active	<ul style="list-style-type: none"> Thunderstorms expected over LA this afternoon; a few may produce winds to knock down a few trees Something that happens almost every day in a particular season such as <u>seabreeze</u> storms in coastal TX
Yellow	Somewhat Common – Happens Frequently Safety: Rarely a Direct Threat to Life and Property Impact Potential: Typically Results in Some Inconvenience to Daily Life	Severe: Slight Risk from SPC Flooding: Nuisance flooded expected for a widespread area, or Minor flooding expected over isolated areas Tropical: A weak tropical wave expected to move towards or near any coastline Fire Weather: Red Flag Watches/Warnings and/or SPC outlines enhanced or critical fire outlook	<ul style="list-style-type: none"> 2-3 inches of rainfall expected over central AR today and tonight; some minor (brief) street flooding possible Scattered severe storms possible, one or two tornadoes expected, along with reports of strong winds/wind damage and ~1” hail
Orange	Uncommon – A Few Times a Year Safety: Often Threatening to Life and Property, Some Damage Unavoidable Impact Potential: Typically Results in Minor Disruption to Daily Life	Severe: Enhanced Risk from SPC Flooding: Minor flooding expected over a widespread area (including urban locations), or Moderate flooding expected over isolated areas Tropical: A Tropical Storm expected to move towards or near any coastline Fire: Critical fire outlook for more than 2 consecutive days, Warnings for 2 or more consecutive days, D3-D4 drought conditions	<ul style="list-style-type: none"> A snow/sleet mix is expected to move through or near the DFW area tomorrow morning; travel impacts likely Numerous severe storms possible, a few tornadoes possible along with several reports of wind damage along with damaging hail Some large fires reported, burn bans advertised, critical conditions expected
Red	Rare – Once every 1-5 Years Safety: Extensive Property Damage Likely, Life Saving Actions Also will be Needed Impact Potential: Will likely result in Large Disruption to Daily Life	Severe: Moderate Risk from SPC Flooding: Moderate flooding expected over a widespread area (including urban locations) Tropical: A Hurricane expected to move towards or near any coastline Fire: Large areas of critical conditions for 2 or more days, Warnings for 3 or more days, Severe to extreme drought	<ul style="list-style-type: none"> A Category 1 hurricane will be moving towards the NW Gulf in the next few days Widespread severe storms likely, strong tornadoes, widespread wind damage, and destructive hail Large fires ongoing throughout the area with critical fire weather conditions expected to continue
Purple	Very Rare – Once Every 5-10 Years Safety: Property Damage Unavoidable, Immediate Action to Save Life will be Needed Impact Potential: Typically Results in Long-Lived Widespread Major Disruption to Daily Life	Severe: High Risk from SPC Flooding: Major flooding expected over a widespread area (including urban locations) Tropical: A Major Hurricane (Cat3 or greater) expected to move towards or near any coastline Fire: Large area of critical conditions for 2 or more days, Warnings for 3 or more days, Long term (months) of severe to extreme drought	<ul style="list-style-type: none"> A Category 4 hurricane is headed towards the SE LA; major storm surge, flooding and damaging winds anticipated to begin tomorrow Widespread severe storms expected, tornado outbreak probable with long-lived, very widespread and particularly intense storms

Criteria for the color codes in this briefing is to the left, please provide any feedback to

sr-srh.roc@noaa.gov