



# FEMA



Prepared by  
*Kurt Van Speybroeck*

# FEMA Region 6 Weather Threat Briefing

Sunday July 5, 2020

**Disclaimer:** The purpose of this briefing is to provide a **Regional** weather threat assessment and is meant as a general overview. County/Parish decision makers should consult their local NWS forecast offices for the latest detailed, local weather information. To find your local NWS forecast office, go to [www.weather.gov/srh](http://www.weather.gov/srh).



NWSSouthern

[www.weather.gov/srh](http://www.weather.gov/srh)

# Summary of the Upcoming Week



**SR ROC**  
REGIONAL OPERATIONS CENTER

- **Marginal risk of flash flooding across LA/AR and E TX and across NE NM into the TX/OK Panhandles.**
- **Marginal risk of flash flooding Monday across E TX into LA.**
- **An area of low pressure along the northern Gulf Coast has a low...near 30 percent chance of development in the next 5 days.**
- **TD Five is currently 70 miles north of Bermuda and moving northeast at 20 mph. No impacts to FEMA region IV.**

# FEMA Region 6 Threat Matrix

Jul 5, 2020 - Jul 9, 2020



**SR ROC**  
REGIONAL OPERATIONS CENTER

DAY / THREAT	Sun	Mon	Tue	Wed	Thu
Severe Storms					
Heavy Rain / Flash Flooding	LA/AR/ETX TX/OK Panhandles	ETX/LA			
Fire Weather					
Tropical Winds / Surge					
Heat					
River Flooding	AR	AR	AR	AR	AR

	No Weather Threats Expected
	Very Common – Happens Often
	Common – Happens Frequently
	Uncommon – A Few Times a Year
	Rare – Once Every 1-5 Years
	Very Rare – Once Every 5-10 Years

*\*Threat levels are based on FEMA Region 6 criteria. State or local threat level criteria may differ.\**

*For more details on the colors in the threat matrix refer to the last slide in this briefing.*

# Tropical Weather Outlook – Atlantic/Gulf



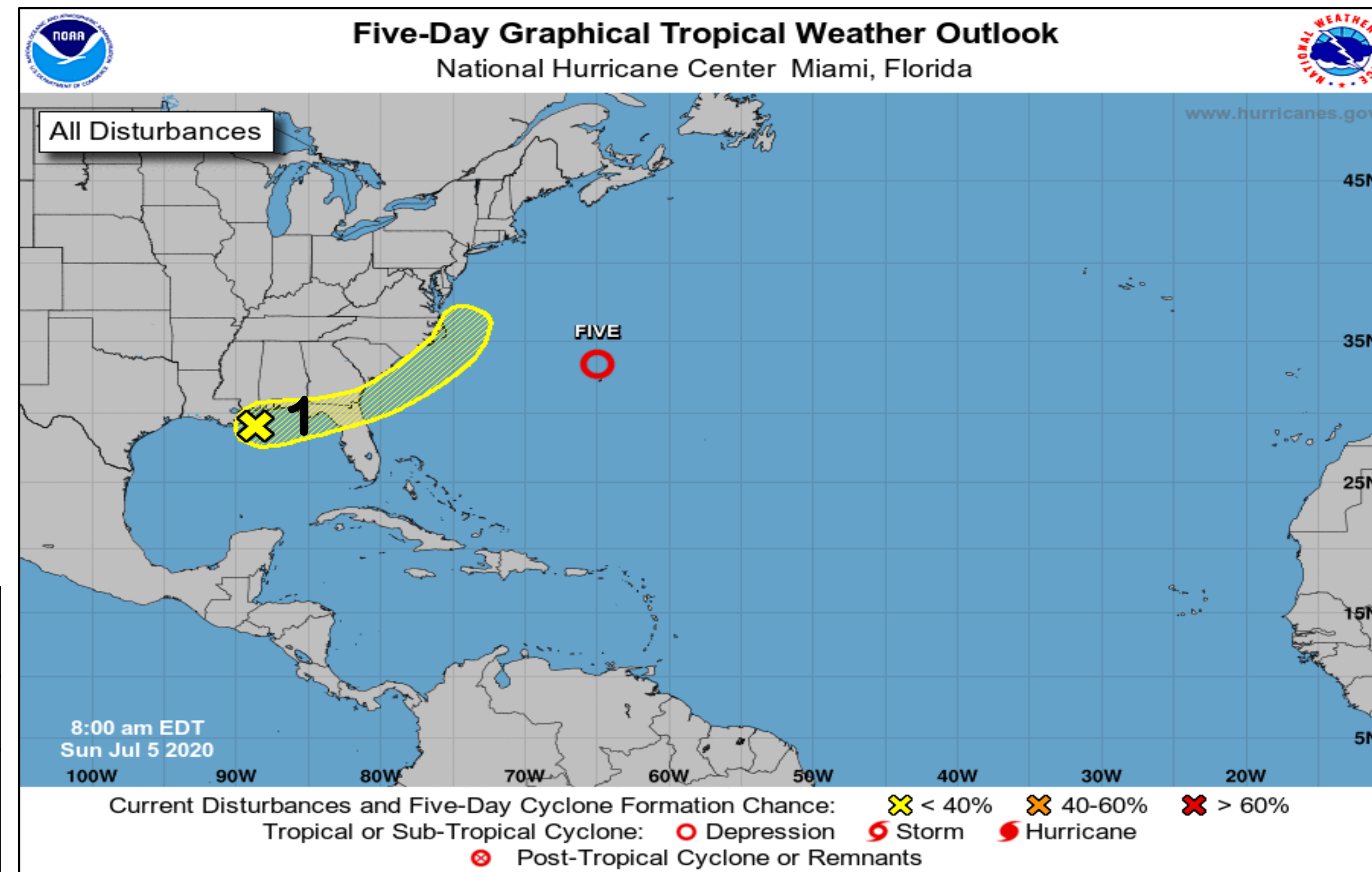
**SR ROC**  
REGIONAL OPERATIONS CENTER

## Areas of Possible Development

Area	Chance of Development	Potential Impacts to FEMA 6
1	Low	None

## Active Tropical Cyclones

Storm	Potential Impacts to FEMA 6
TD Five	None



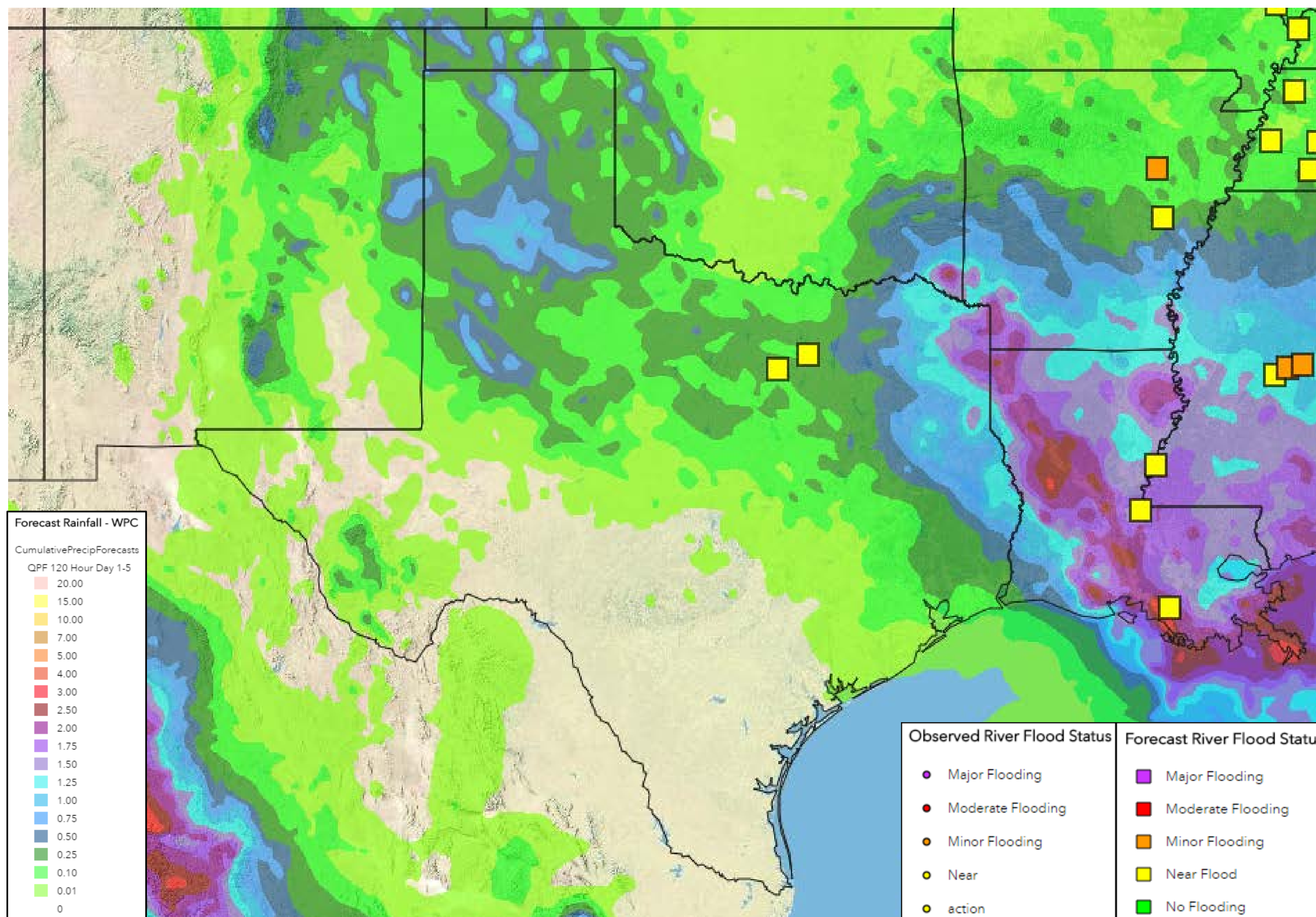
# 5-Day Precipitation Forecast & River Flood Status



SR ROC  
REGIONAL OPERATIONS CENTER

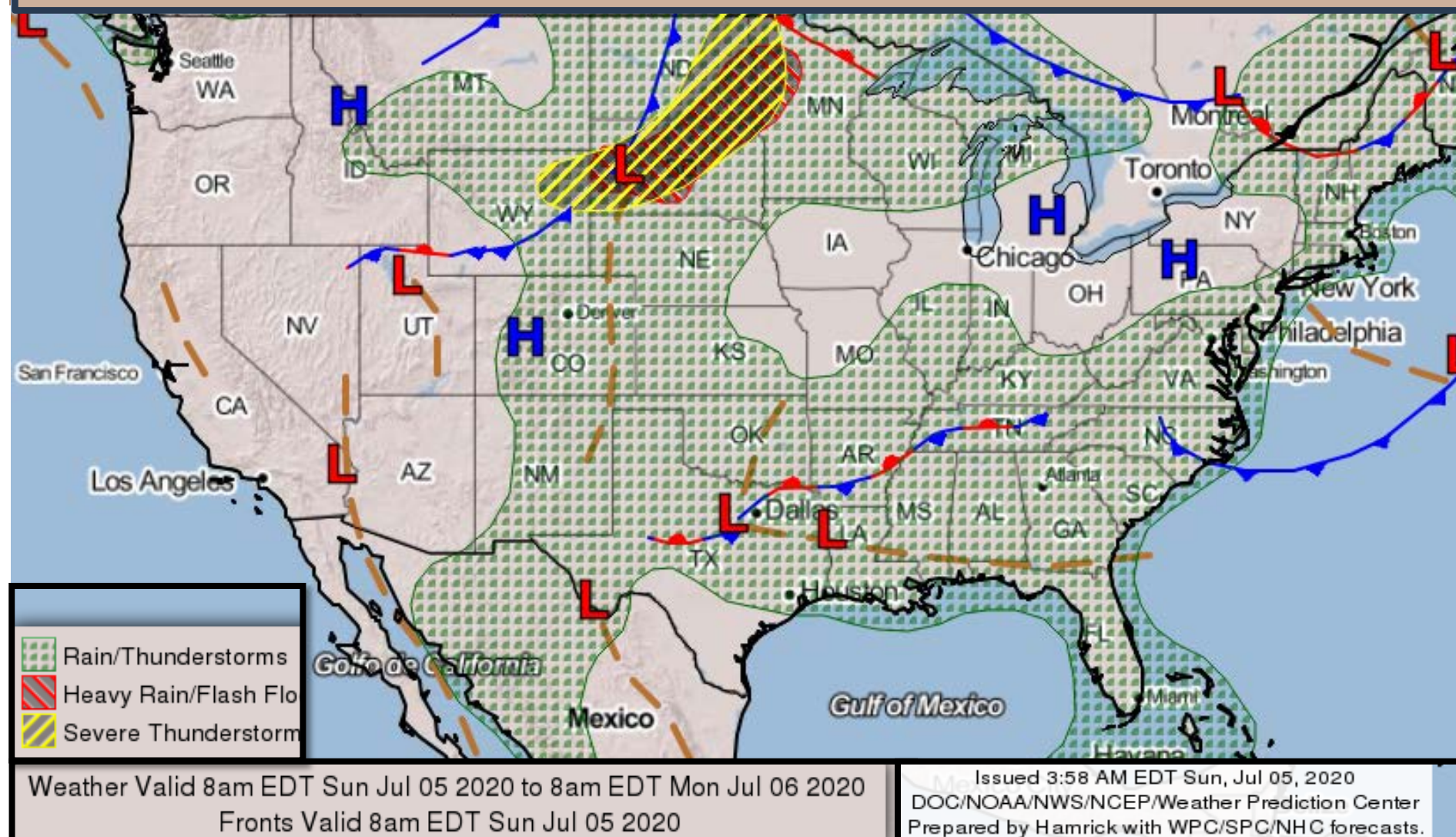
*Note: Even though the image displays 5 days of forecasted rainfall, river forecasts only include 1-2 days of rainfall*

**The White River in E AR remains in minor flood stage through next week with impacts limited to low lying roads and farmland.**

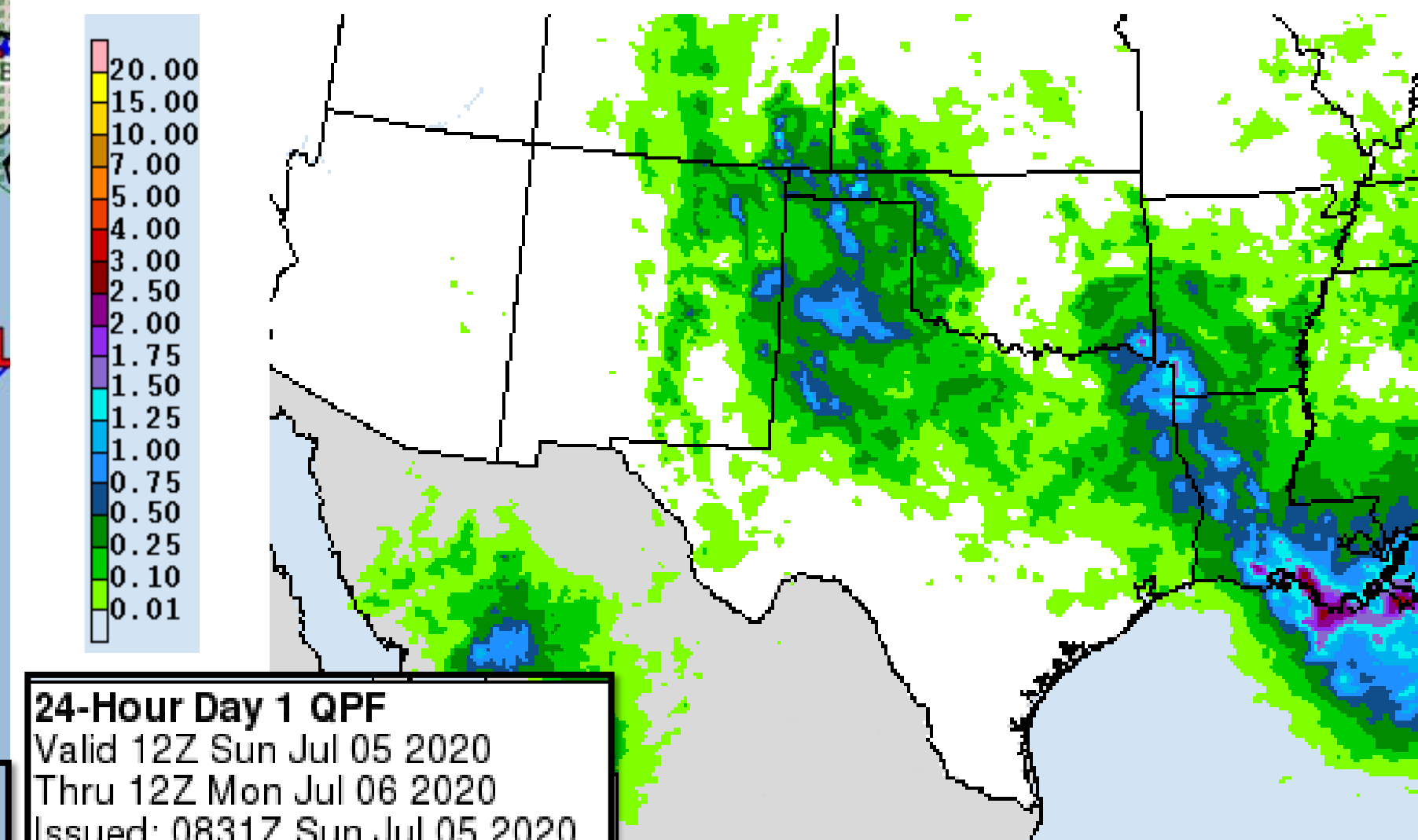


# Today's Weather

## Forecast Chart



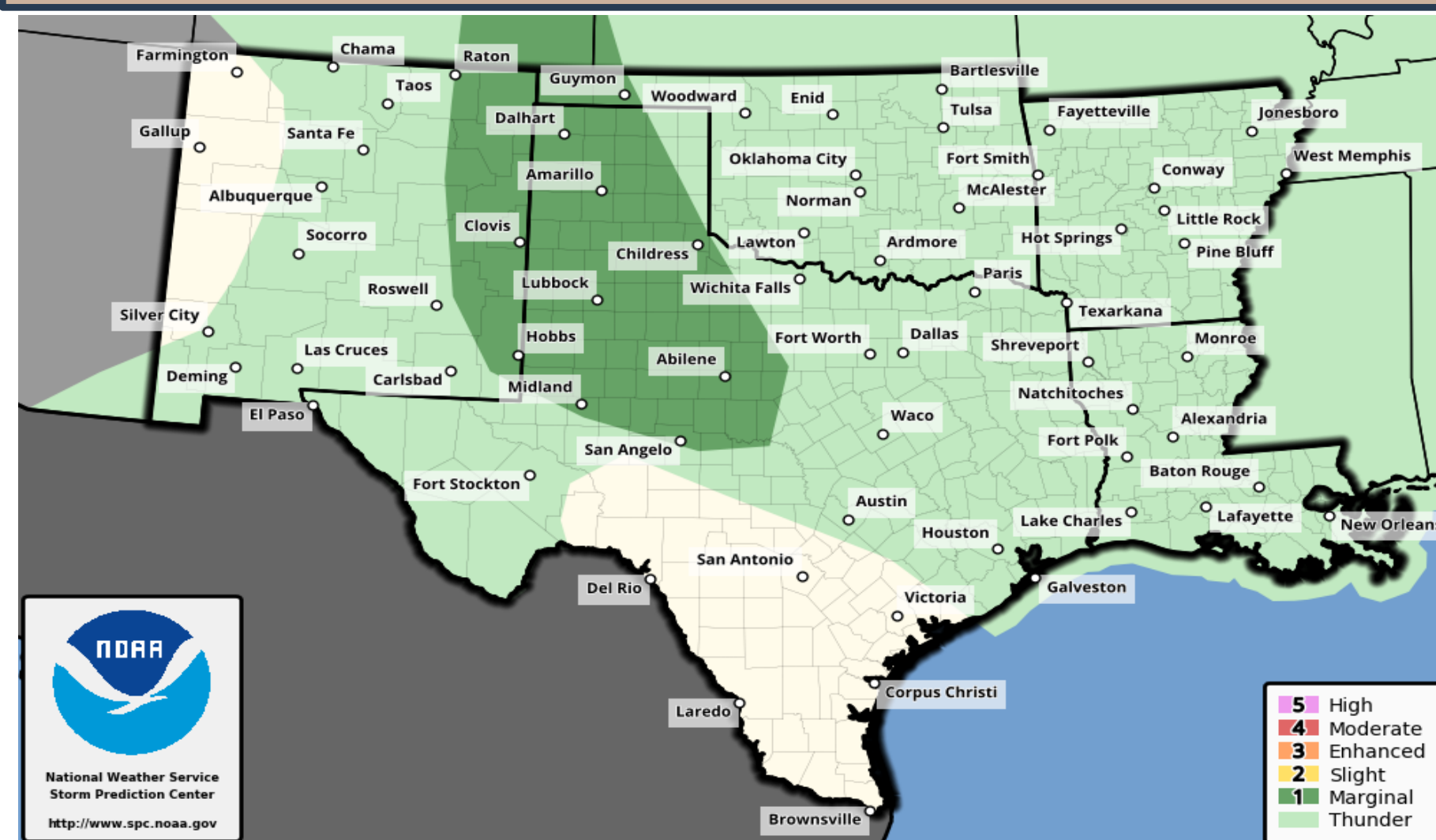
## Forecast Rainfall



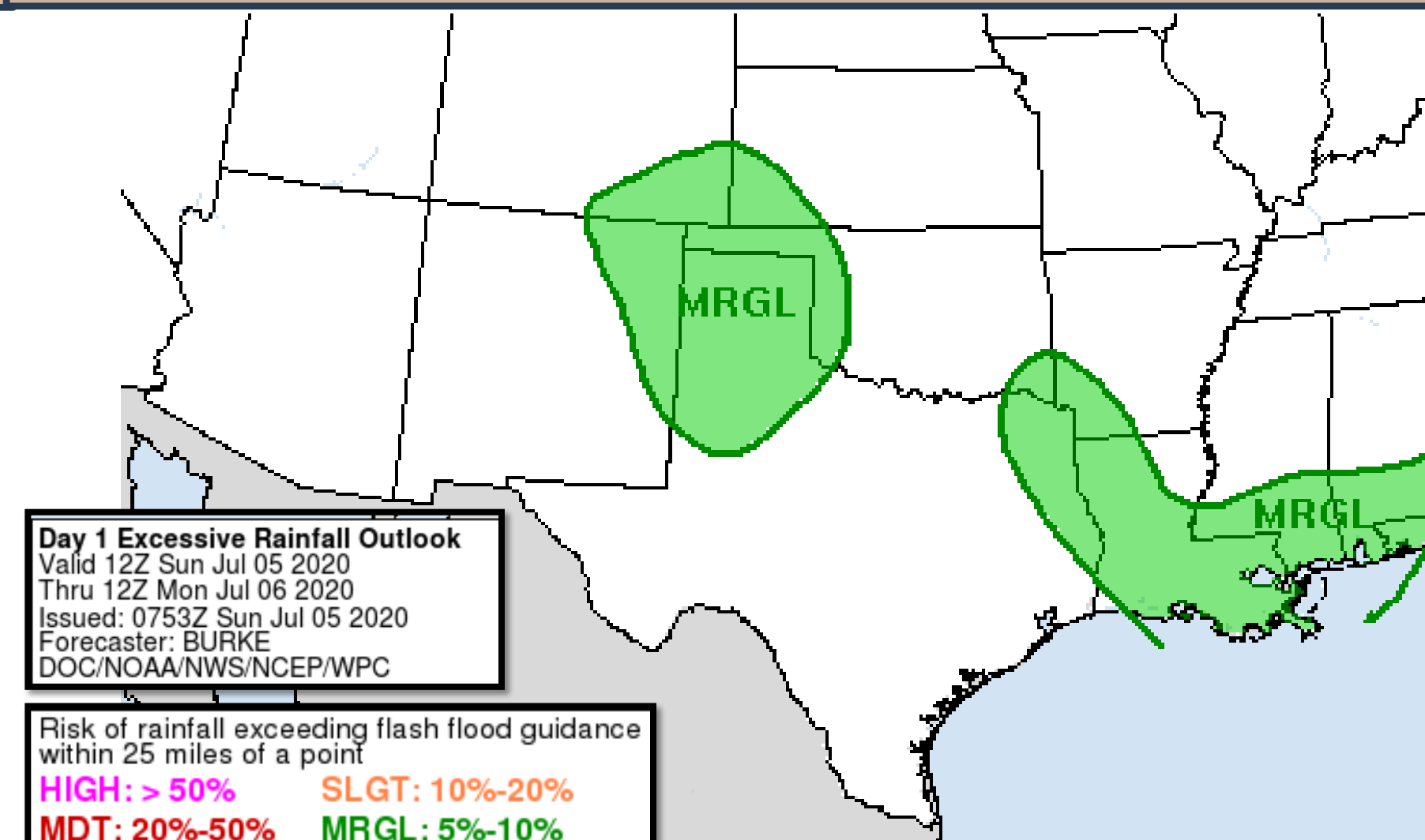
SR ROC  
REGIONAL OPERATIONS CENTER

**Marginal risk of heavy rain/flash flooding across LA/AR and E TX and across NE NM into the TX/OK Panhandles.**

## Severe Weather Outlook



## Excessive Rainfall Outlook

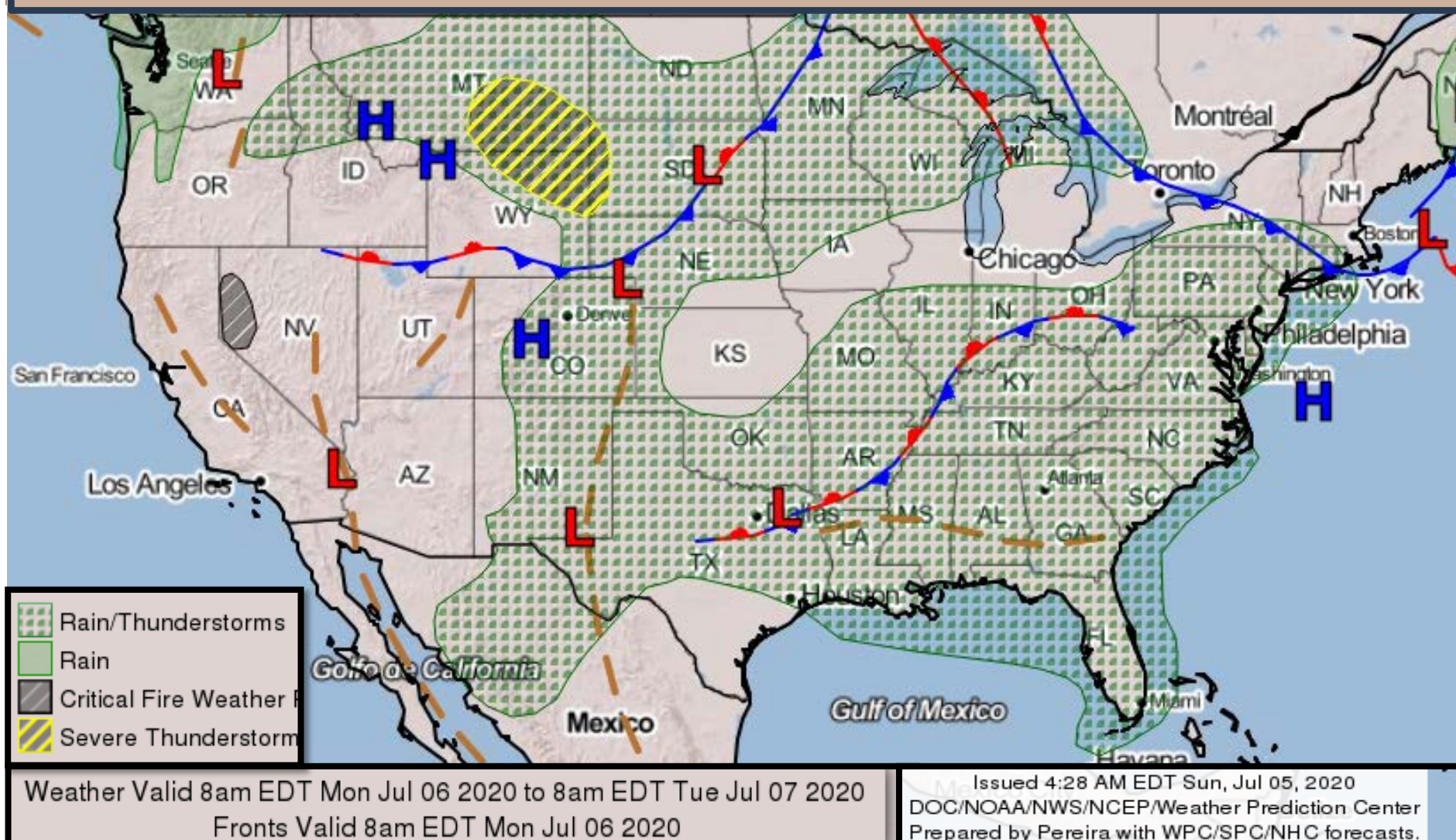


# Tomorrow's Weather

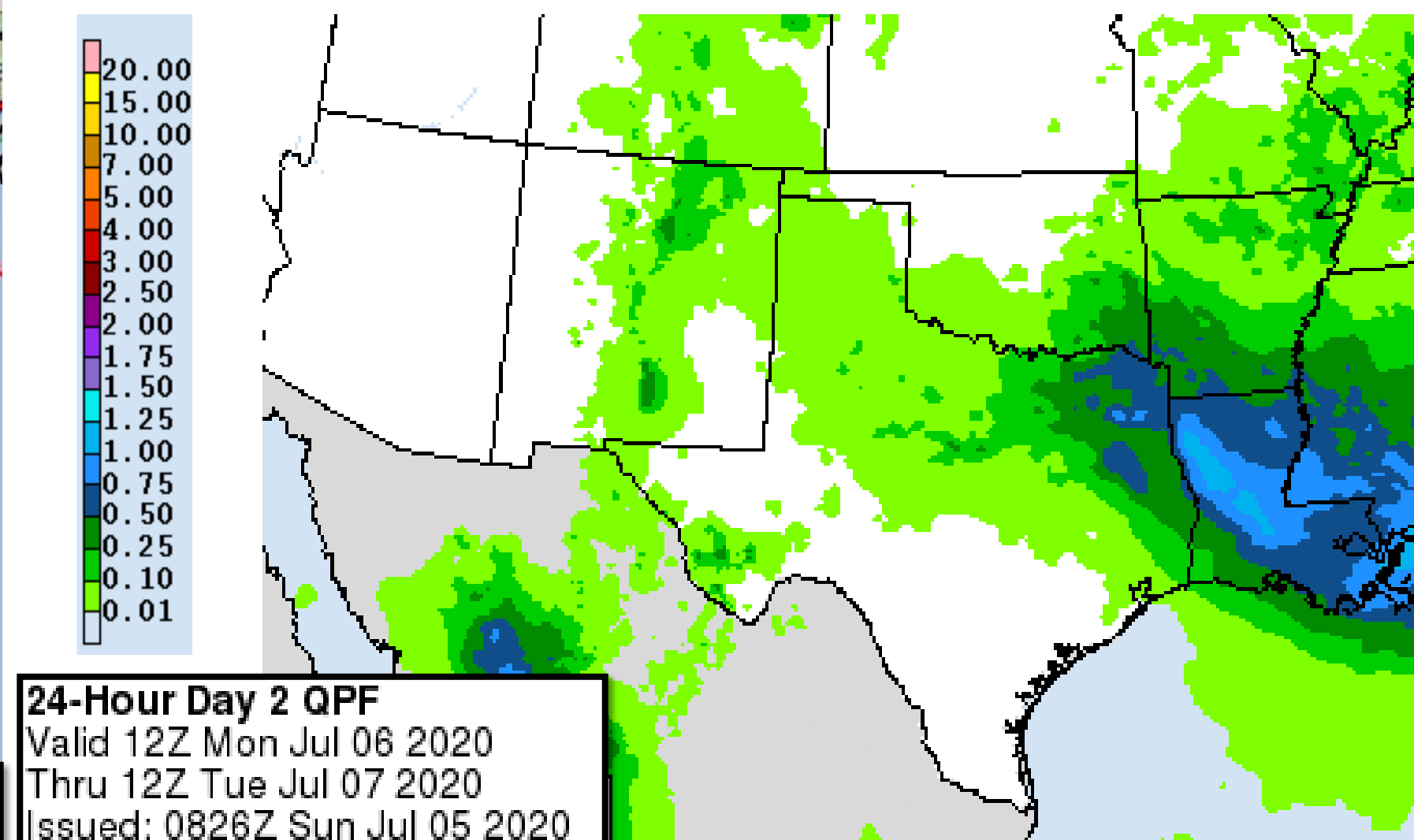


SR ROC  
REGIONAL OPERATIONS CENTER

## Forecast Chart

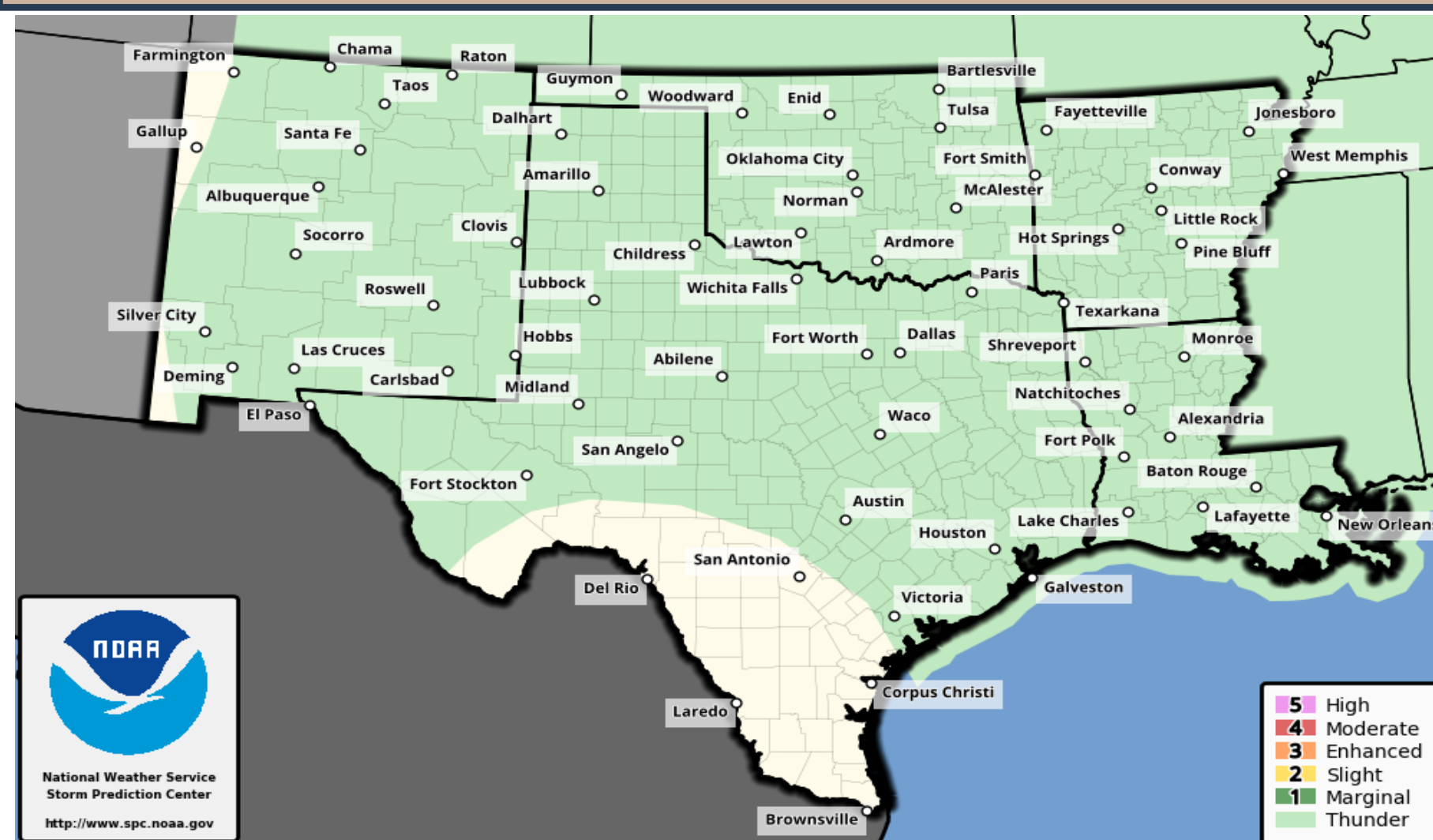


## Forecast Rainfall

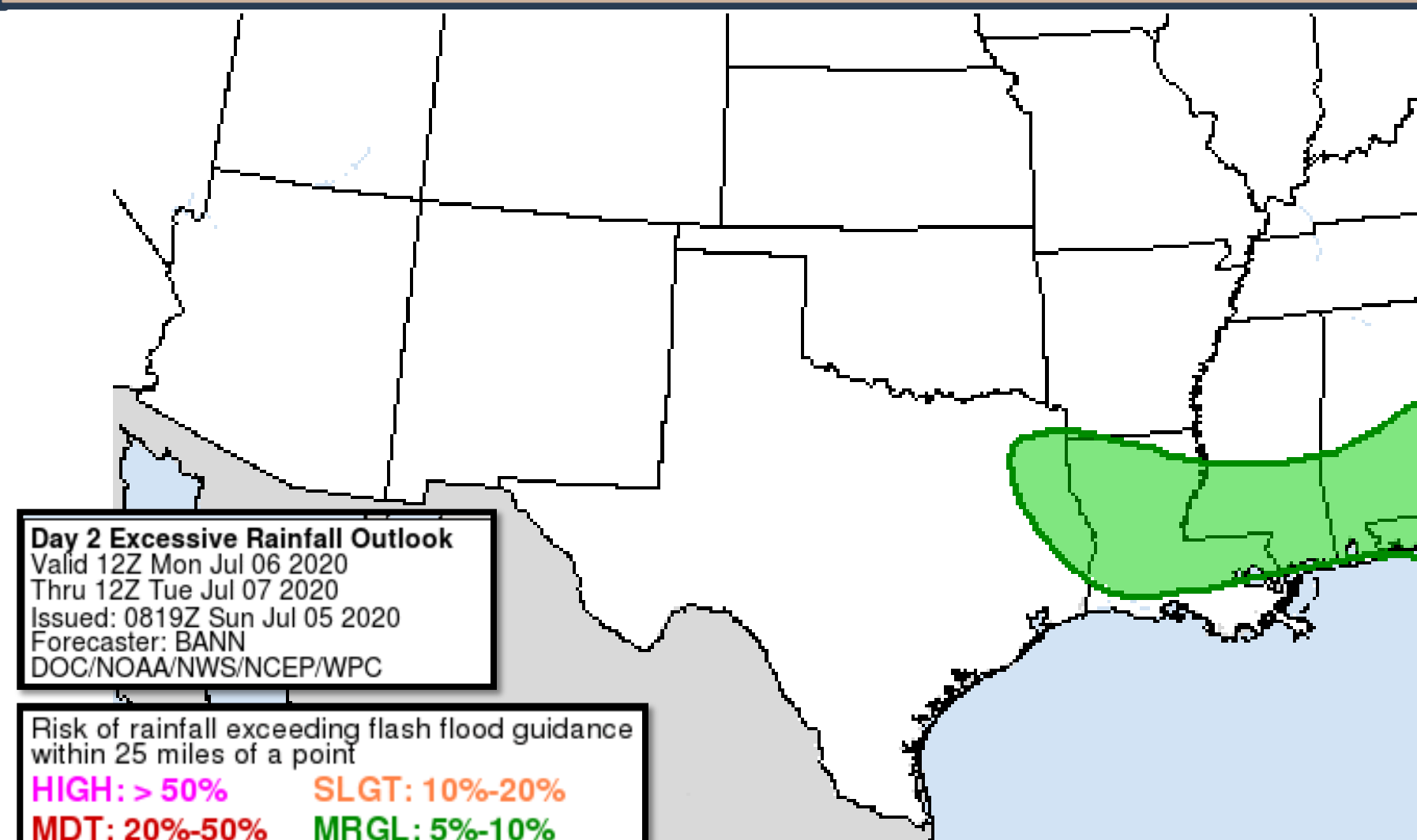


Marginal risk of flash flooding  
across E TX into LA.

## Severe Weather Outlook

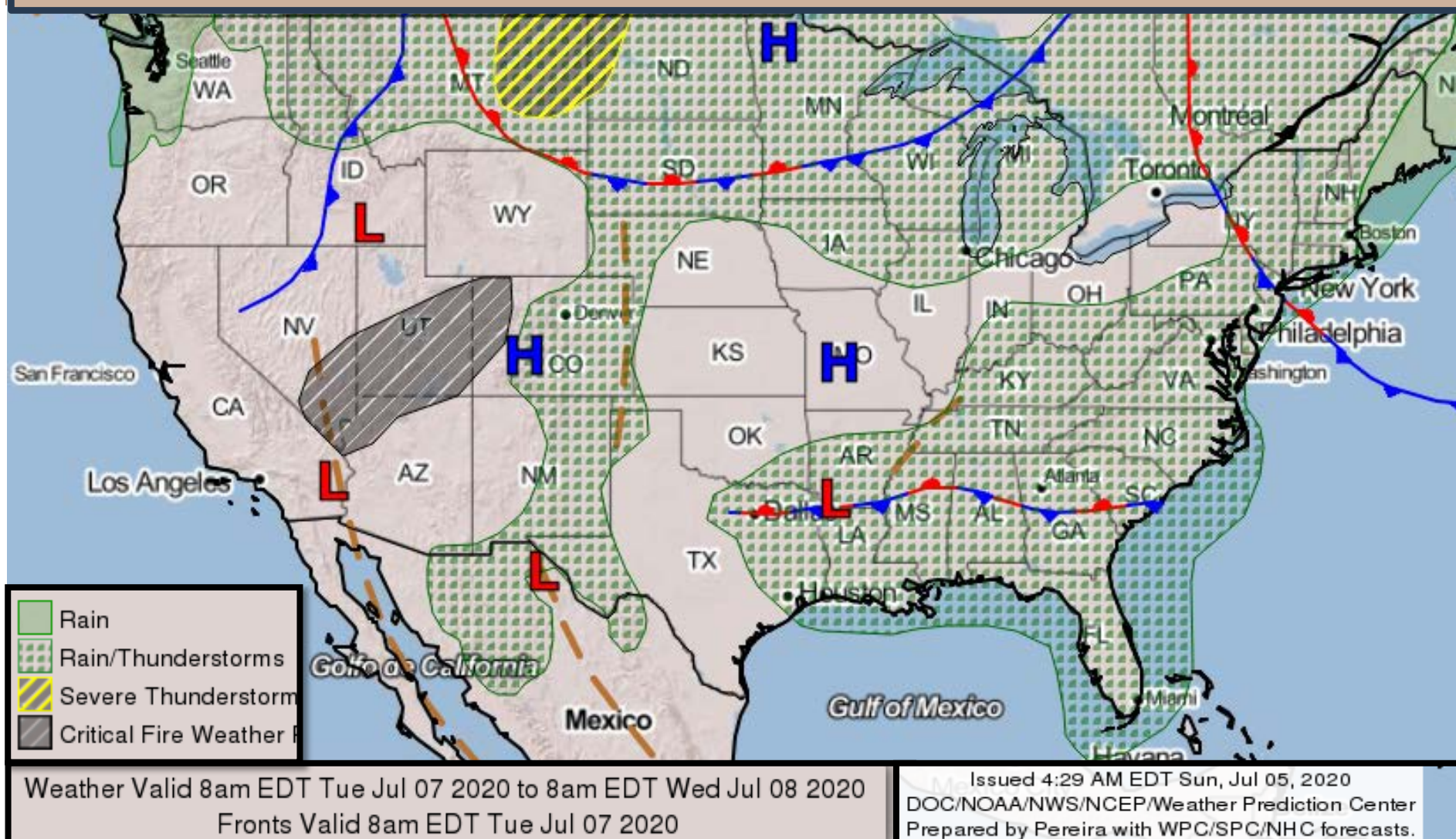


## Excessive Rainfall Outlook

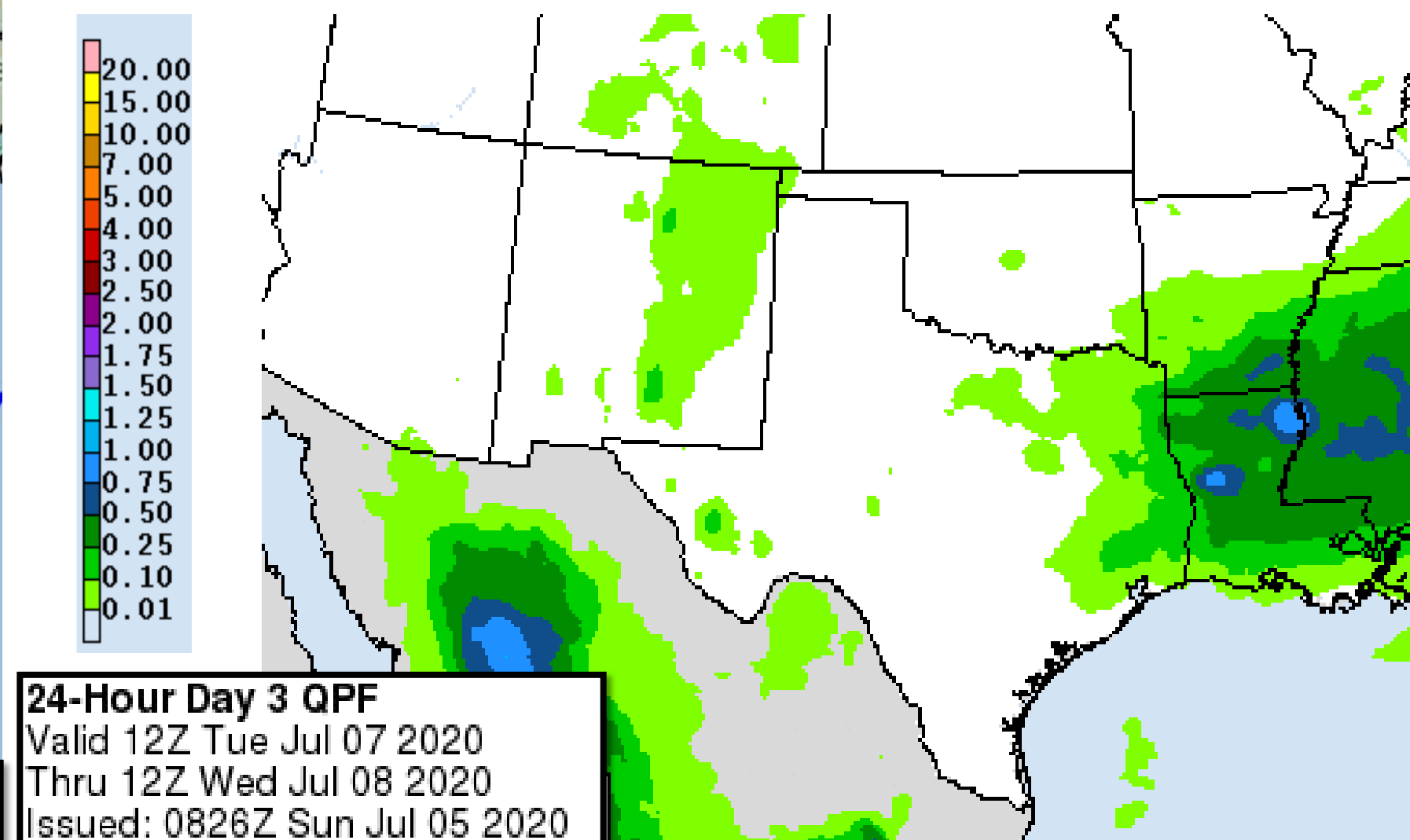


# Tuesday's Weather

## Forecast Chart



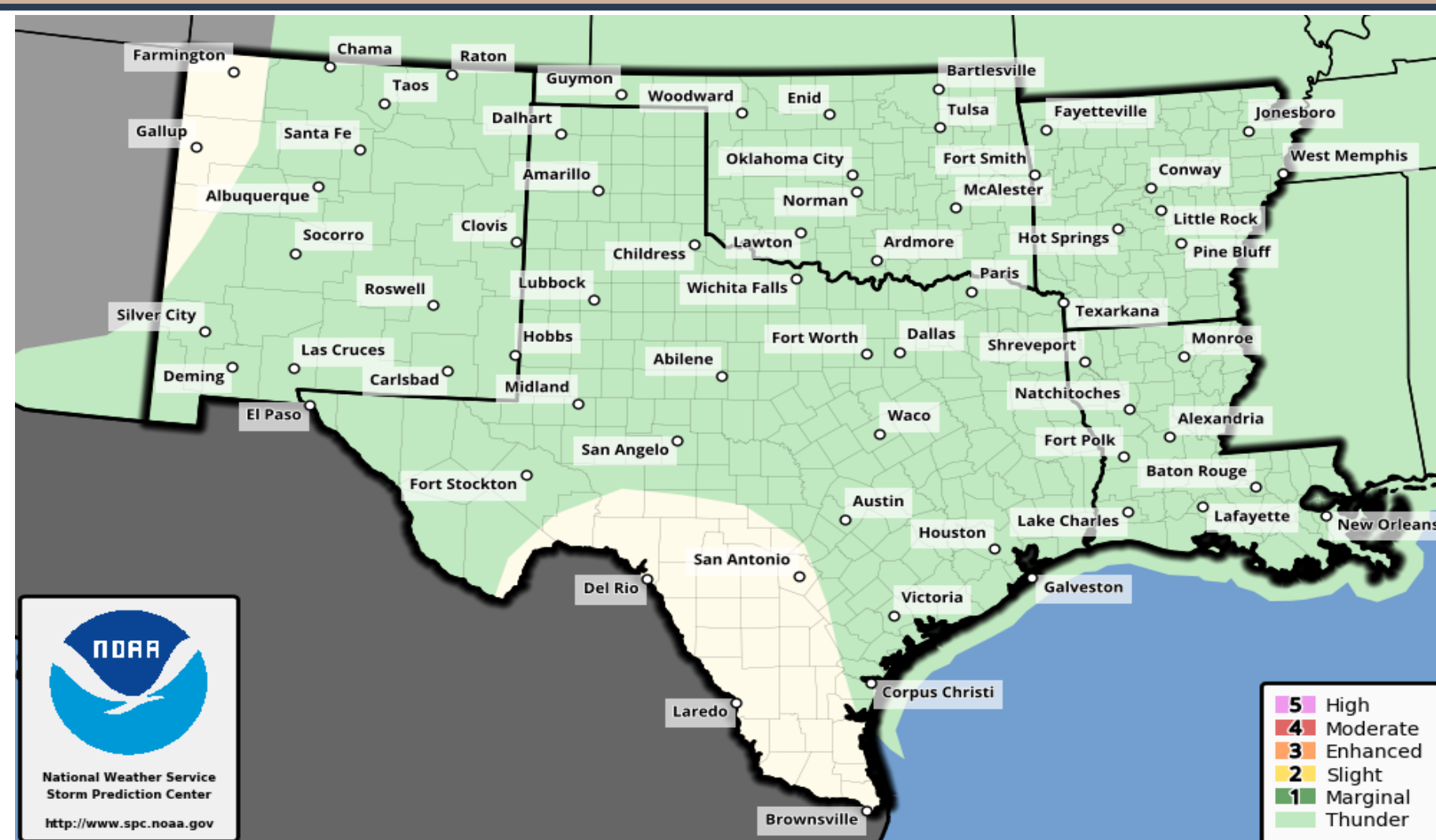
## Forecast Rainfall



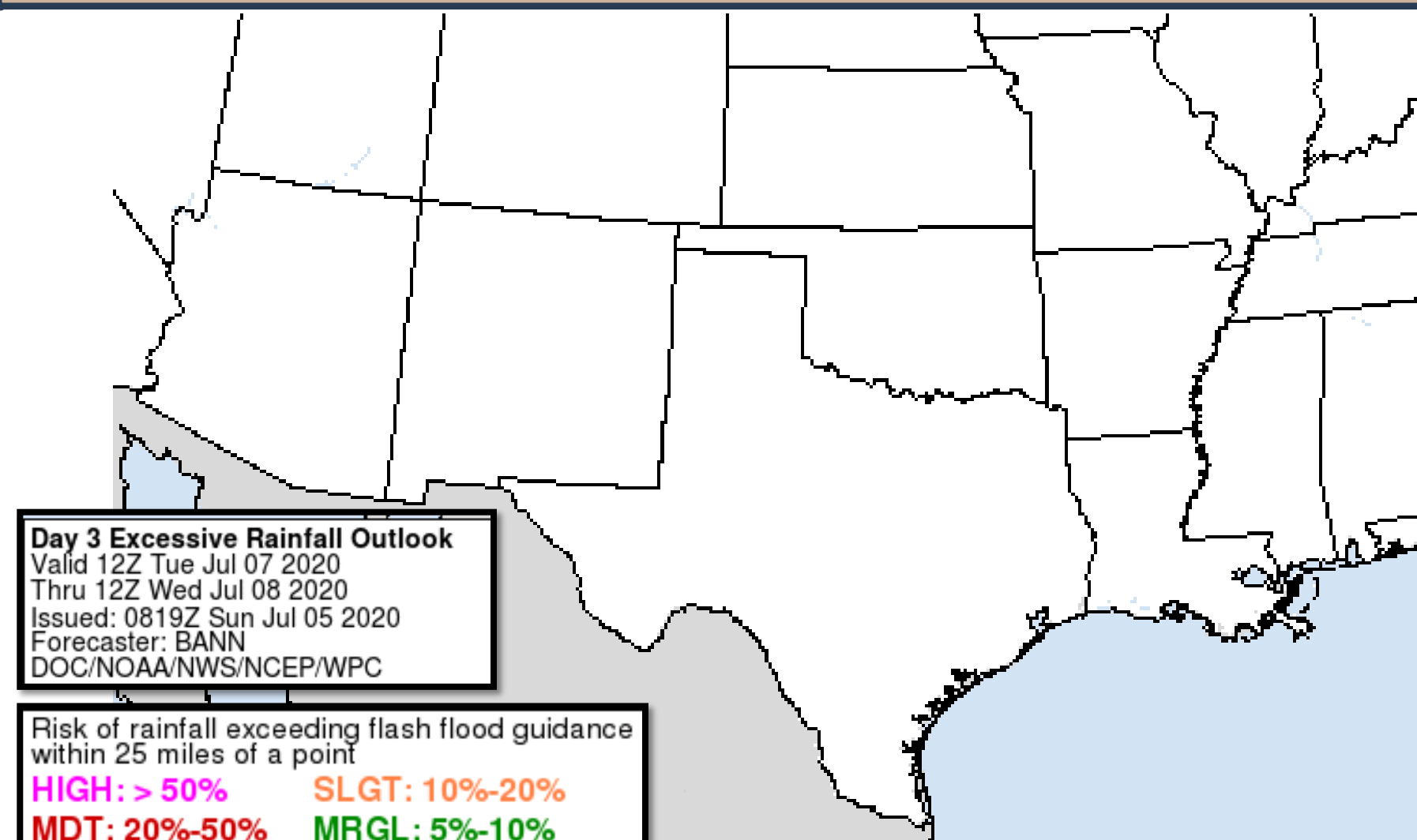
SR ROC  
REGIONAL OPERATIONS CENTER

No significant weather  
expected.

## Severe Weather Outlook



## Excessive Rainfall Outlook

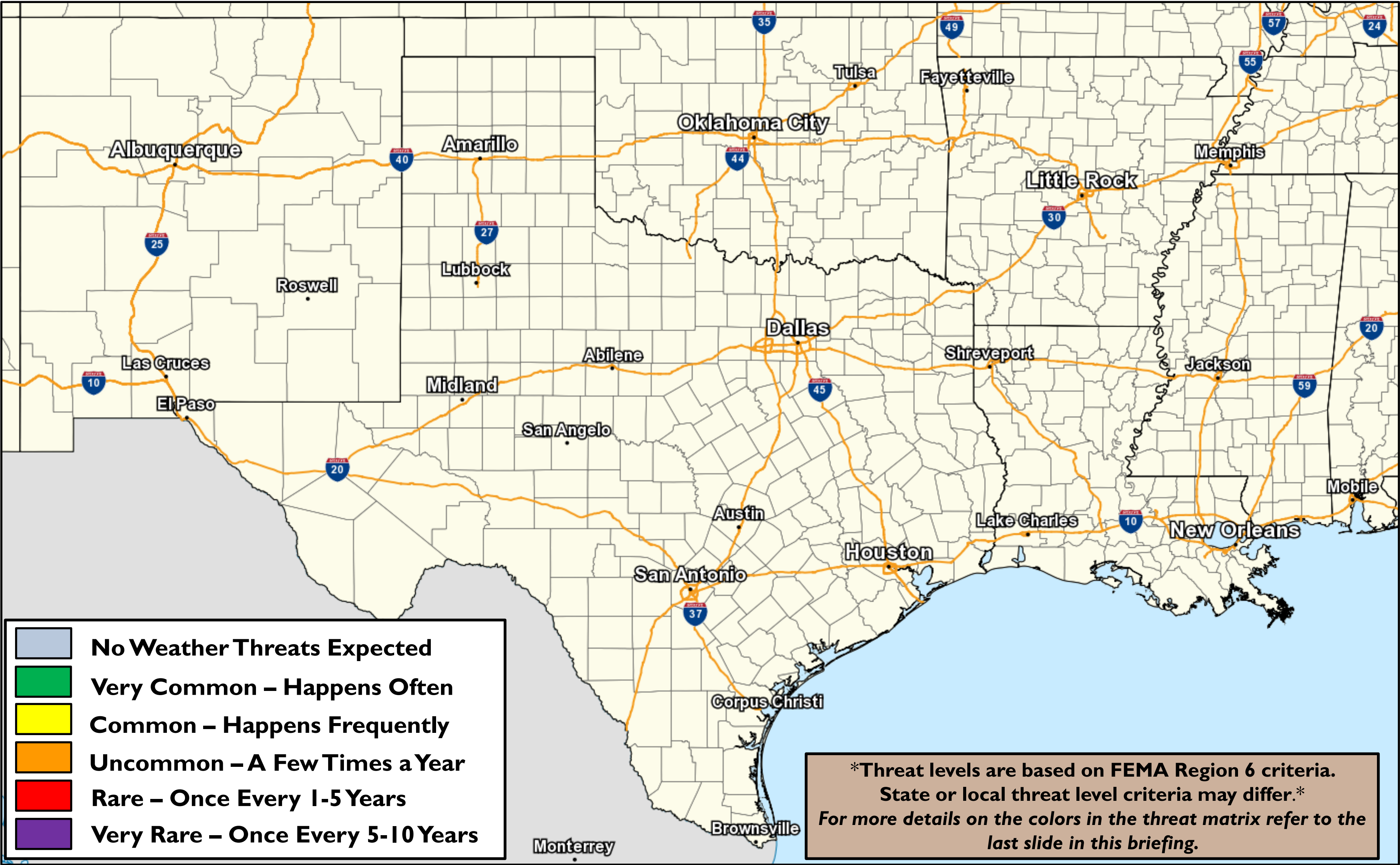


# Days 4-5 Weather Hazards

Wednesday - Thursday



SR ROC  
REGIONAL OPERATIONS CENTER



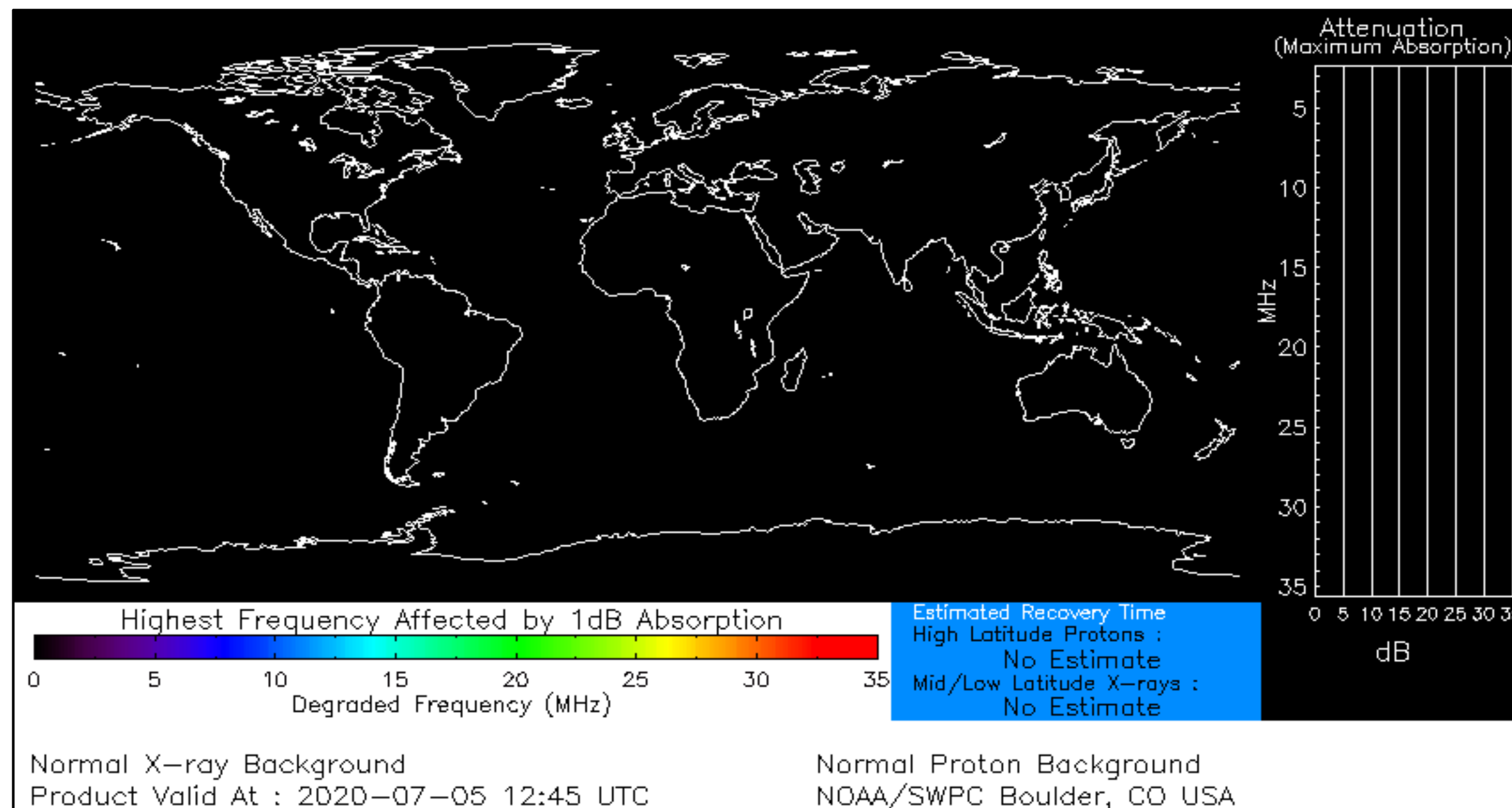
No significant weather expected.

# Space Weather 3-Day Forecast



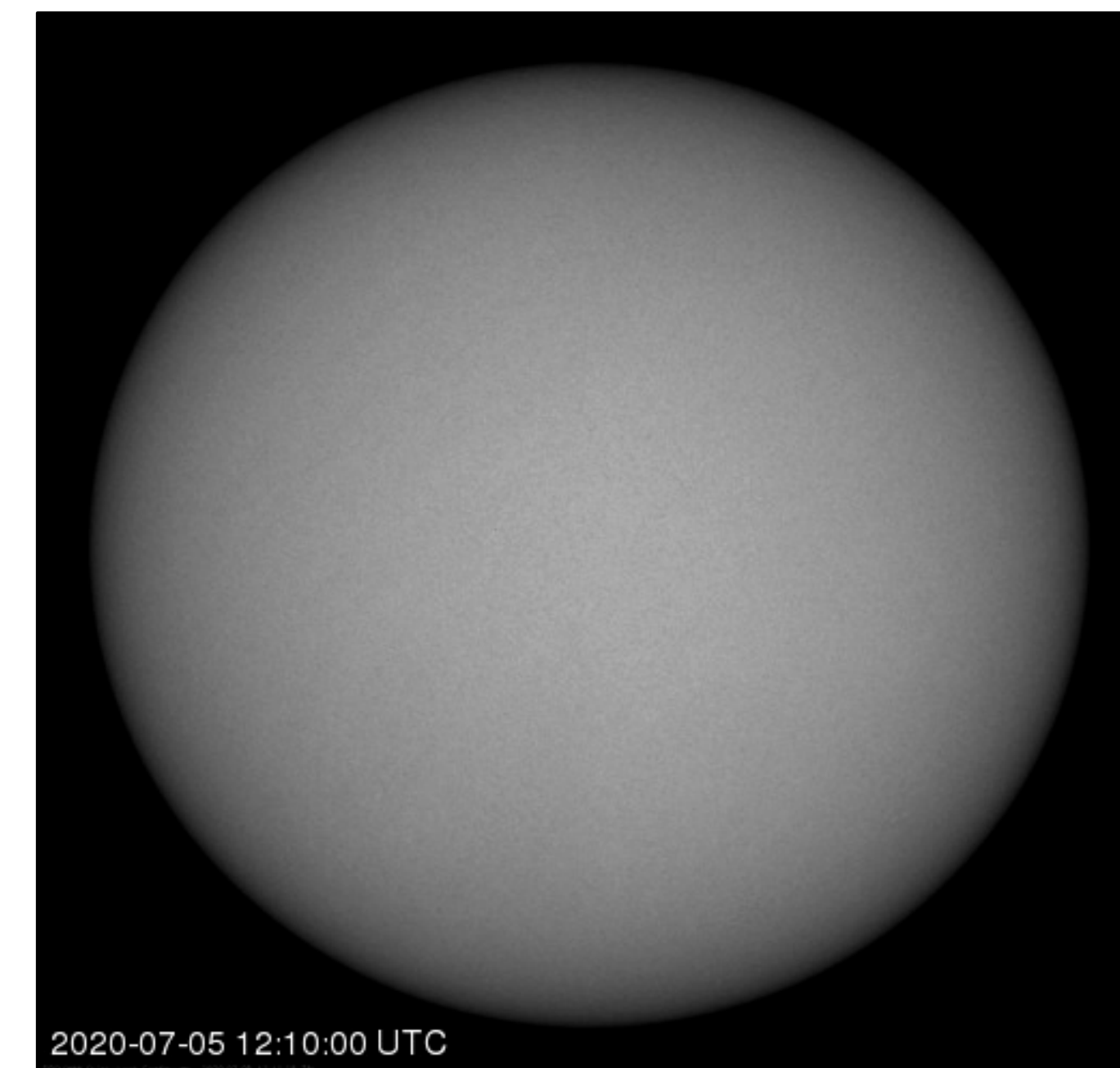
**SR ROC**  
REGIONAL OPERATIONS CENTER

	Sunday	Monday	Tuesday
<b>Geomagnetic Storms</b>	<b>Quiet (Max Kp = 2)</b>	<b>Quiet (Max Kp = 2)</b>	<b>Quiet (Max Kp = 2)</b>
<b>Solar Radiation Storm (S1-S5)</b>	<b>1%</b>	<b>1%</b>	<b>1%</b>
<b>Radio Blackout (R1-R2)</b>	<b>1%</b>	<b>1%</b>	<b>1%</b>
<b>Radio Blackout (R3-R5)</b>	<b>1%</b>	<b>1%</b>	<b>1%</b>



[Click here for a Description of the Space Weather Storm Scales](#)

[Click here for the Latest 3-Day Space Weather Forecast Text](#)





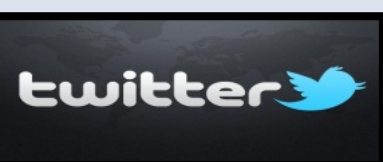
# For more information, please contact:

**National Weather Service**  
Southern Region Headquarters  
Regional Operations Center  
Fort Worth, TX

Phone: (682) 703-3747

E-mail: [sr-srh.roc@noaa.gov](mailto:sr-srh.roc@noaa.gov)

Web: <http://www.weather.gov/srh>



Weather “Threat” Matrix			
Color	Definition	Criteria	Example(s)
Green	<b>Very Common</b> Safety: Rarely a Direct Threat to Life and Property Impact Potential: Typically Results in Little Inconvenience to Daily Routines	Severe: Marginal Risk from SPC Flooding: Minor flooding expected over localized areas Tropical: None Fire Weather: No Watches/Warnings, fuel moisture above 10% or green up active	<ul style="list-style-type: none"> <li>Thunderstorms expected over LA this afternoon; a few may produce winds to knock down a few trees</li> <li>Something that happens almost every day in a particular season such as <u>seabreeze</u> storms in coastal TX</li> </ul>
Yellow	<b>Somewhat Common – Happens Frequently</b> Safety: Rarely a Direct Threat to Life and Property Impact Potential: Typically Results in Some Inconvenience to Daily Life	Severe: Slight Risk from SPC Flooding: Nuisance flooded expected for a widespread area, or Minor flooding expected over isolated areas Tropical: A weak tropical wave expected to move towards or near any coastline Fire Weather: Red Flag Watches/Warnings and/or SPC outlines enhanced or critical fire outlook	<ul style="list-style-type: none"> <li>2-3 inches of rainfall expected over central AR today and tonight; some minor (brief) street flooding possible</li> <li>Scattered severe storms possible, one or two tornadoes expected, along with reports of strong winds/wind damage and ~1” hail</li> </ul>
Orange	<b>Uncommon – A Few Times a Year</b> Safety: Often Threatening to Life and Property, Some Damage Unavoidable Impact Potential: Typically Results in Minor Disruption to Daily Life	Severe: Enhanced Risk from SPC Flooding: Minor flooding expected over a widespread area (including urban locations), or Moderate flooding expected over isolated areas Tropical: A Tropical Storm expected to move towards or near any coastline Fire: Critical fire outlook for more than 2 consecutive days, Warnings for 2 or more consecutive days, D3-D4 drought conditions	<ul style="list-style-type: none"> <li>A snow/sleet mix is expected to move through or near the DFW area tomorrow morning; travel impacts likely</li> <li>Numerous severe storms possible, a few tornadoes possible along with several reports of wind damage along with damaging hail</li> <li>Some large fires reported, burn bans advertised, critical conditions expected</li> </ul>
Red	<b>Rare – Once every 1-5 Years</b> Safety: Extensive Property Damage Likely, Life Saving Actions Also will be Needed Impact Potential: Will likely result in Large Disruption to Daily Life	Severe: Moderate Risk from SPC Flooding: Moderate flooding expected over a widespread area (including urban locations) Tropical: A Hurricane expected to move towards or near any coastline Fire: Large areas of critical conditions for 2 or more days, Warnings for 3 or more days, Severe to extreme drought	<ul style="list-style-type: none"> <li>A Category 1 hurricane will be moving towards the NW Gulf in the next few days</li> <li>Widespread severe storms likely, strong tornadoes, widespread wind damage, and destructive hail</li> <li>Large fires ongoing throughout the area with critical fire weather conditions expected to continue</li> </ul>
Purple	<b>Very Rare – Once Every 5-10 Years</b> Safety: Property Damage Unavoidable, Immediate Action to Save Life will be Needed Impact Potential: Typically Results in Long-Lived Widespread Major Disruption to Daily Life	Severe: High Risk from SPC Flooding: Major flooding expected over a widespread area (including urban locations) Tropical: A Major Hurricane (Cat3 or greater) expected to move towards or near any coastline Fire: Large area of critical conditions for 2 or more days, Warnings for 3 or more days, Long term (months) of severe to extreme drought	<ul style="list-style-type: none"> <li>A Category 4 hurricane is headed towards the SE LA; major storm surge, flooding and damaging winds anticipated to begin tomorrow</li> <li>Widespread severe storms expected, tornado outbreak probable with long-lived, very widespread and particularly intense storms</li> </ul>

**Criteria for the color codes in this briefing is to the left, please provide any feedback to**

**[sr-srh.roc@noaa.gov](mailto:sr-srh.roc@noaa.gov)**